



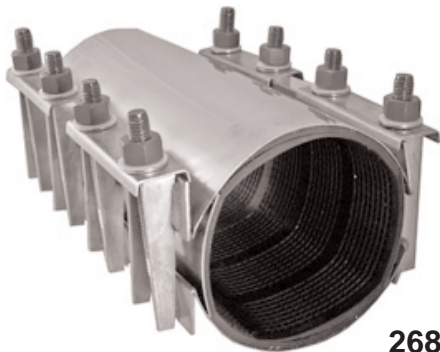
# 267 & 268 Higher Pressure Full Circle® Repair Clamps Multi-Band 4"-24" Nominal, Standard (larger sizes available upon request)



**267 & 268-100**

**For Gas Service**  
\*see notes below

Size O.D. in Inches	Working Pressure
4.50-14.25	225
15.30-25.80	150



**268**

**267 Material Specifications**

**Body:** Carbon steel ASTM A 285 Grade A or ASTM A283 Grade C. *Optional: All 304 Stainless Steel.*

**Gasket:** Nitrile (Buna N) compounded to produce superior storage and performance characteristics while resisting water, acids, alkalis, most (aliphatic) hydrocarbon and many other chemicals. Nominal temperature range -20°F to 180°F. Consult manufacturer for specific applications or other service temperatures.

**Bolts & Nuts:** High strength low alloy steel with heavy semi-finished hexagon nuts to ASTM A-307 (ANSI A21.11) standards. Optional-type 304 stainless steel bolts. Stainless steel nuts are fluoropolymer coated to prevent galling.

**Finish:** Fusion bonded Flexi-Coat® epoxy, Coated to an average 12 mil thickness.

*Material specifications are subject to change.*

**268 Material Specifications**

**Body:** Full circumference band. 18-8 type 304 stainless steel.

**Gasket:** Nitrile (Buna N) compounded to produce superior storage and performance characteristics while resisting water, acids, alkalis, most (aliphatic) hydrocarbon and many other chemicals. Nominal temperature range -20°F to 180°F. Consult manufacturer for specific applications or other service temperatures.

**Bolts & Nuts:** 18-8 type 304 stainless steel heavy hex nuts, stud bolts & washers. Nuts and studs are fluoropolymer coated to prevent galling.

*Material specifications are subject to change.*

## Features and Benefits:

- Provides a fast, economical means of repairing holes, cracks or other types of damage to cast iron, steel and other types of rigid pipe at higher pressures.
- A lap type gasket with molded tapered ends provides efficient equalized sealing at the lap joint on any pipe with in the clamp's range. The gasket has a finely gridded surface with the resilience to easily conform to irregularities on rough pipe surfaces or in pitted areas, providing an effective seal all around the pipe.
- Both styles are designed with two sections or more of heavy welded carbon or stainless steel that bolt together on the pipe making it easy to assemble over the damaged area or to assemble off to the side of the repair area and then slide over the damaged area.
- A stainless steel bridge plate spans the opening of the lugs and is bonded flush into the gasket to prevent wrinkling in the lug area, providing even gasket pressure at all points around the full circumference of the pipe.
- Carbon steel (267) or 304 stainless steel (268) body, selected to meet the necessary corrosion resistance, flexibility and strength requirements for higher pressure applications.
- The 267 style clamp has feed-through lugs like the Smith-Blair 632/622 Tapping Sleeve, while the 268 style clamp has lugs similar to the 266/261 style Smith-Blair Full Circle®. Both give the structural strength required to handle higher pressures.

**\*When ordering, customer must identify size, type, condition of pipe and working pressure.**  
**WARNING: Not to be used to couple pipe or repair full breaks.**



## 267 & 268 Higher Pressure Full Circle® Repair Clamps

### Multi-Band

#### 4"-24" Nominal, Standard

Nom. Size Inches	O.D. Range Inches	Width Inches	Catalog Number 267 Carbon Steel	Width Inches	Catalog Number 268 Stainless Steel	Catalog Number 268 Removable Bolts	Wt. Each Lbs.
4	4.46-4.86	12	267-00048012-000	15	268-00048015-000	-	23
6	6.59-6.99	12	267-00066312-000	15	268-00066315-000	268-00066312-100	41
6	6.84-7.30	12	267-00069012-000	15	268-00069015-000	268-00069012-100	42
8-10	7.90-8.30	12	267-00080012-000	15	268-00080015-000	268-00080012-100	47
8-10	8.62-9.06	12	267-00086312-000	15	268-00086315-000	268-00086312-100	48
		16	267-00086316-000	20	268-00086320-000	268-00086316-100	64
8-10	8.99-9.45	12	267-00090512-000	15	268-00090515-000	268-00090512-100	48
		16	267-00090516-000	20	268-00090520-000	268-00094516-000	65
8-10	9.20-9.60	12	267-00094512-000	15	268-00094515-000	268-00094512-100	48
		16	267-00094516-000	20	268-00094520-000	268-00094516-100	65
8-10	9.60-10.00	12	267-00096512-000	15	268-00096515-000	268-00096515-100	48
		16	267-00096516-000	20	268-00096520-000	268-00096520-100	65
10-12	9.90-10.30	12	267-00100012-000	15	268-00100015-000	268-00100012-100	50
		16	267-00100016-000	20	268-00100020-000	268-00100016-100	67
10-12	10.73-11.13	12	267-00107512-000	15	268-00107515-000	268-00107512-100	50
		16	267-00107516-000	20	268-00107520-000	268-00107516-100	67
		20	267-00107520-000	25	268-00107525-000	268-00107520-100	83
10-12	11.05-11.45	12	267-00111012-000	15	268-00111015-000	268-00111012-100	56
		16	267-00111016-000	20	268-00111020-000	268-00111016-100	70
		20	267-00111020-000	25	268-00111025-000	268-00111020-100	89
10-12	11.70-12.10	12	267-00117512-000	15	268-00117515-000	268-00117512-100	60
		16	267-00117516-000	20	268-00117520-000	268-00117516-100	80
		20	267-00117520-000	25	268-00117525-000	268-00117520-100	100
12-14	12.00-12.40	12	267-00120012-000	15	268-00120015-000	268-00120012-100	60
		16	267-00120016-000	20	268-00120020-000	268-00120016-100	80
		20	267-00120020-000	25	268-00120025-000	268-00120020-100	100
12-14	12.50-12.90	12	267-00127512-000	15	268-00127515-000	268-00127512-100	62
		16	267-00127516-000	20	268-00127520-000	268-00127516-100	82
		20	267-00127520-000	25	268-00127525-000	268-00127520-100	102
12-14	13.16-13.56	12	267-00132012-000	15	268-00132015-000	268-00132012-100	63
		16	267-00132016-000	20	268-00132020-000	268-00132016-100	83
		20	267-00132020-000	25	268-00132025-000	268-00132020-100	103
12-14	13.60-14.09	12	267-00138212-000	15	268-00138215-000	268-00138212-100	64
		16	267-00138216-000	20	268-00138220-000	268-00138216-100	84
		20	267-00138220-000	25	268-00138225-000	268-00138220-100	104
12-14	14.10-14.58	12	267-00142512-000	15	268-00142515-000	268-00142512-100	65
		16	267-00142516-000	20	268-00142520-000	268-00142516-100	86
		20	267-00142520-000	25	268-00142525-000	268-00142520-100	107
14-16	15.30-15.80	12	267-00153012-000	15	268-00153015-000	268-00153012-100	68
		16	267-00153016-000	20	268-00153020-000	268-00153016-100	91
		20	267-00153020-000	25	268-00153025-000	268-00153020-100	113
14-16	15.80-16.30	12	267-00160012-000	15	268-00160015-000	268-00160012-100	70
		16	267-00160016-000	20	268-00160020-000	268-00160016-100	93
		20	267-00160020-000	25	268-00160025-000	268-00160020-100	116
14-16	16.40-16.80	12	267-00164012-000	15	268-00164015-000	268-00164012-100	71
		16	267-00164016-000	20	268-00164020-000	268-00164016-100	94
		20	267-00164020-000	25	268-00164025-000	268-00164020-100	117

Larger sizes available upon request.



## 267 & 268 Higher Pressure Full Circle® Repair Clamps

### Multi-Band

4"-24" Nominal, Standard

Nom. Size Inches	O.D. Range Inches	Width Inches	Catalog Number 267 Carbon Steel	Width Inches	Catalog Number 268 Stainless Steel	Catalog Number 268 Removable Bolts	Wt. Each Lbs.
16-18	17.40-17.80	12	267-00174012-000	15	268-00174015-000	268-00174015-100	74
		16	267-00174016-000	20	268-00174020-000	268-00174020-100	96
		20	267-00174020-000	25	268-00174025-000	268-00174025-100	119
16-18	18.60-19.20	12	267-00187012-000	15	268-00187015-000	268-00187015-100	76
		16	267-00187016-000	20	268-00187020-000	268-00187020-100	96
		20	267-00187020-000	25	268-00187025-000	268-00187025-100	121
18-20	19.50-20.10	12	267-00195012-000	15	268-00195015-000	268-00195015-100	78
		16	267-00195016-000	20	268-00195020-000	268-00195020-100	100
		20	267-00165020-000	25	268-00195025-000	268-00195025-100	125
18-20	20.90-21.59	12	267-00209012-000	15	268-00209015-000	268-00209015-100	80
		16	267-00209016-000	20	268-00209020-000	268-00209020-100	105
		20	267-00209020-000	25	268-00209025-000	268-00209025-100	130
20	21.60-22.40	12	267-00216012-000	15	268-00216015-000	268-00216015-100	83
		16	267-00216016-000	20	268-00216020-000	268-00216020-100	109
		20	267-00216020-000	25	268-00216025-000	268-00216025-100	132
24	23.50-24.20	12	267-00235012-000	15	268-00235015-000	268-00235015-100	86
		16	267-00235016-000	20	268-00235020-000	268-00235020-100	115
		20	267-00235020-000	25	268-00235025-000	268-00235025-100	140
24-26	25.80-26.60	12	267-00258012-000	15	268-00258015-000	268-00258015-100	89
		16	267-00258016-000	20	268-00258020-000	268-00258020-100	119
		20	267-00258020-000	25	268-00258025-000	268-00258025-100	147

Larger sizes available upon request.