

CLARKE FIRE PUMP DRIVERS EPA NSPS TIER 3 ENGINE MODELS VT APPLICATIONS

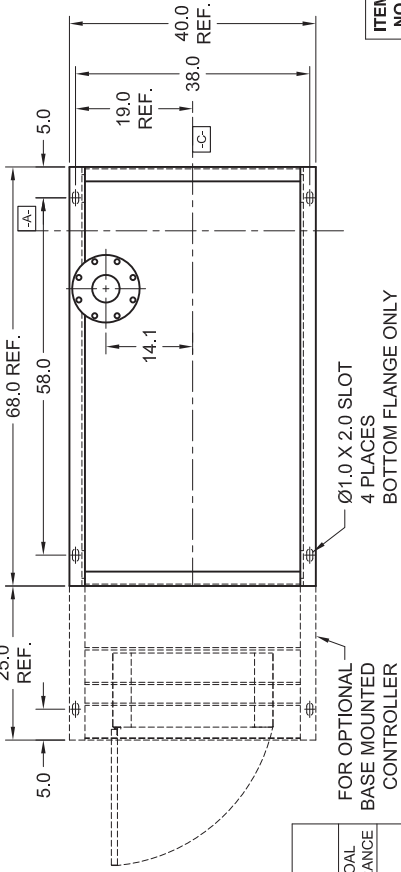
- A- MOUNTING FACE OF FLYWHEEL
- B- ENGINE CRANKSHAFT HORIZONTAL CENTERLINE
- C- ENGINE CRANKSHAFT VERTICAL CENTERLINE
- D- PUMP SHAFT HORIZONTAL CENTERLINE



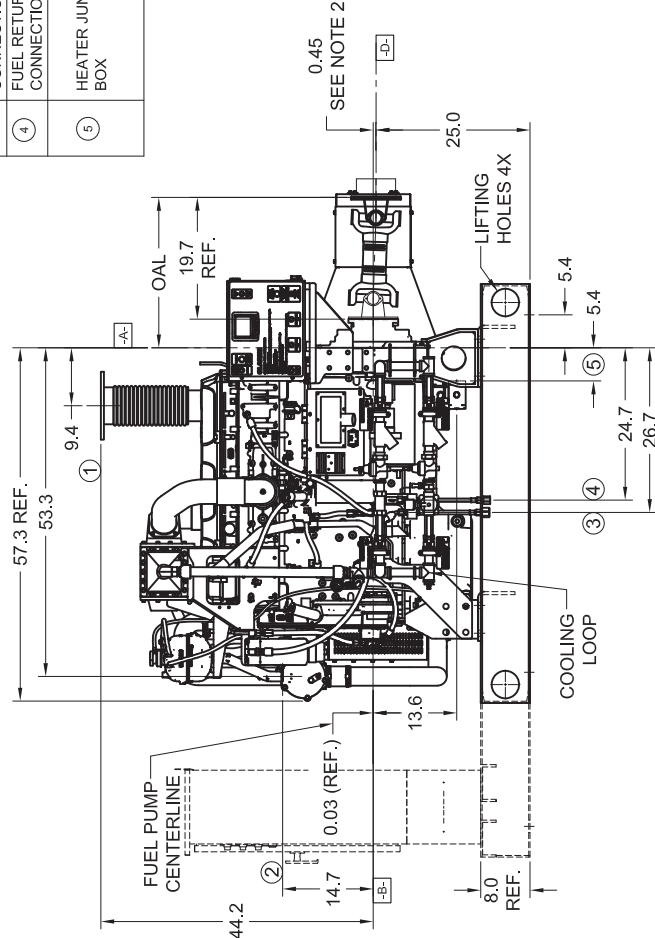
ENGINE MODEL	DRIVESHAFT MODEL	DIM:K	COUPLING MODEL	DIM:OAL	DIM:OAL TOLERANCE
C13H0-UFAD20, 22, 22-D 28, 30, 40	CDS50-SC	0.11	TC45-14-81-FS	24.46	+1.03/-0.86
C13H0-UFAD32, 32-D, 38, 50, 52, 52-D, 58, 60			TC50-14-81-FS		

NON-LISTED DRIVESHAFTS

ENGINE MODEL	DRIVESHAFT MODEL	DIM:K	COUPLING MODEL	DIM:OAL	DIM:OAL TOLERANCE
C13H0-UFAD62, 62-D, 68, 70, 72, 72-D, 78	SC2160A	0.15	TC50-14-180.10-FS	24.20	+1.17/-1.00



ITEM NO.	DESCRIPTION	CONNECTION SIZE
1	EXHAUST OUTLET CONNECTION	SEE EXHAUST TABLE
2	RAW WATER OUTLET	SEE NOTE 6.
3	FUEL SUPPLY CONNECTION	3/4" NPTF
4	FUEL RETURN CONNECTION	1/2" NPTF
5	HEATER JUNCTION BOX	VOLTAGE REQUIREMENTS: AC CONNECTION HEATER 2000 WATTS STD- 115 VAC +5%-10% OPT- 230 VAC +5%-10%



- NOTES:
- GENERAL TOLERANCE: UNLESS OTHERWISE SPECIFIED, ALL DIMENSIONS ARE IN INCHES AND VARY 0.38"
 - THE DRIVE SHAFT IS DESIGNED TO OPERATE AT A 2° ANGLE WITH THE INPUT AND OUTPUT SHAFTS IN PARALLEL. THE ENGINE CRANKSHAFT IS TO BE SET WITH A PARALLEL OFFSET OF 0.45 ± "K" INCHES VERTICALLY ABOVE THE PUMP SHAFT AND 0.00" ± "K" INCH PARALLEL OFFSET HORIZONTALLY RIGHT OR LEFT OF THE PUMP SHAFT. REFER TO THE CERTIFIED DRIVESHAFT INSTRUCTIONS MANUAL FOR ALIGNMENT INSTRUCTIONS.
 - BASE MUST BE COMPLETELY FILLED WITH GROUT PER NFPA 20.
 - PUMP IS CW (CLOCKWISE) ROTATION WHEN VIEWED FROM THE COUPLING END.
 - SUCTION AND DISCHARGE FLANGES DRILLED PER ANSI B16.1 (IF APPLICABLE).
 - RAW WATER OUTLET SIZE VARIES BASED UPON SITE CONDITIONS. DEFAULT SIZE: 1-1/2" NPT
 - CAUTION: ALL PLUMBING MUST BE SUPPORTED AND/OR ISOLATED SO THAT NO WEIGHT OR STRESS IS APPLIED TO ANY ENGINE COMPONENT.
 - CAUTION: SPREADER BARS REQUIRED TO MOVE PACKAGE. DAMAGE DUE TO IMPROPER HANDLING IS NOT WARRANTABLE.

EXHAUST OUTLET CONNECTION SIZE TABLE	
ENGINE MODEL	EXHAUST SIZE
C13H0-UFAD20, 22, 22-D 28, 30, 32, 32-D, 38, 40 50, 52, 52-D, 58, 60, 62, 62-D, 68	6" 150# FLG.
C13H0-UFAD70, 72, 72-D, 78	8" 150# FLG.

Certified for: Approval Construction By: _____ Date: _____ Listed: UL FM

Project: _____ Engine Supplier: CLARKE
 Capacity: _____
 Customer: _____ Total Pressure: _____
 Item / P.O. No.: _____ Pump Speed: _____
 Quote No.: _____ Engine Preheater Voltage: _____
 Pump Model: _____ Pump Serial No.: _____
 Rotation: CLOCKWISE (Right Hand) SO No.: _____