

### Horizontal split case 8100, 8150 series pumps

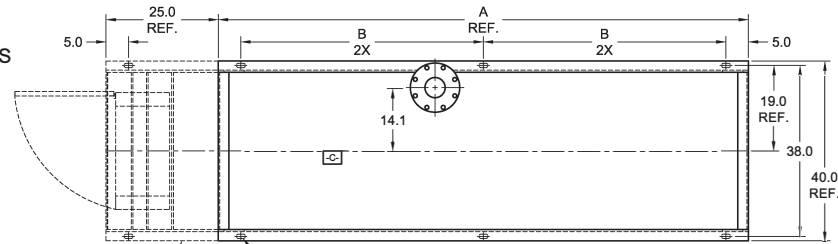
**CLARKE FIRE PUMP DRIVERS  
EPA NSPS TIER 3 ENGINE MODELS  
HSC APPLICATIONS**

- A- - MOUNTING FACE OF FLYWHEEL
- B- - ENGINE CRANKSHAFT HORIZONTAL CENTERLINE
- C- - ENGINE CRANKSHAFT VERTICAL CENTERLINE
- D- - PUMP SHAFT HORIZONTAL CENTERLINE

UL LISTED DRIVESHAFTS		
ENGINE MODEL	DRIVESHAFT MODEL	DIM:K
C13H0-UFAD20, 22, 22-D, 28, 30, 32, 32-D, 38, 40, 50, 52, 62-D, 58, 60	CDS50-SC	0.11
NON-LISTED DRIVESHAFTS		
ENGINE MODEL	DRIVESHAFT MODEL	DIM:K
C13H0-UFAD62, 62-D, 68, 70, 72, 72-D, 78	SC2160A	0.15

**NOTES:**

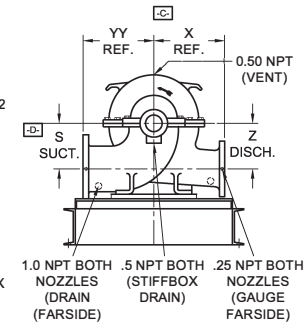
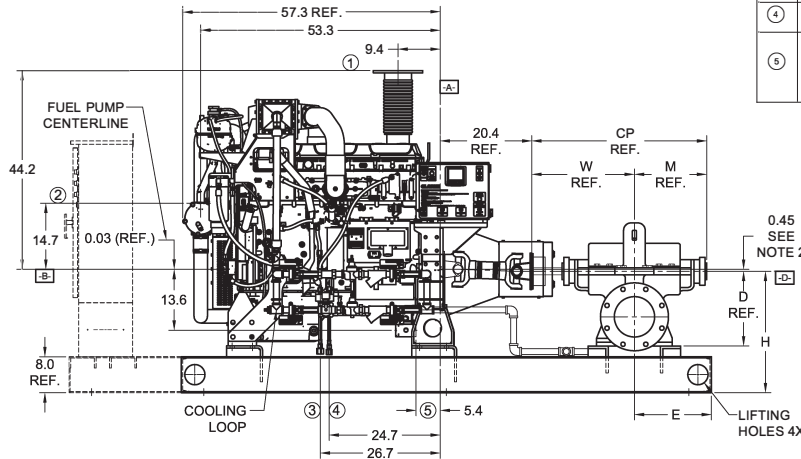
- GENERAL TOLERANCE: UNLESS OTHERWISE SPECIFIED, ALL DIMENSIONS ARE IN INCHES AND VARY 0.38".
- THE DRIVE SHAFT IS DESIGNED TO OPERATE AT A 2° ANGLE WITH THE INPUT AND OUTPUT SHAFTS IN PARALLEL. THE ENGINE CRANKSHAFT IS TO BE SET WITH A PARALLEL OFFSET OF 0.45 ± "K" INCHES VERTICALLY ABOVE THE PUMP SHAFT AND 0.00" ± "K" INCH PARALLEL OFFSET HORIZONTALLY RIGHT OR LEFT OF THE PUMP SHAFT. REFER TO THE CERTIFIED DRIVESHAFT INSTRUCTIONS MANUAL FOR ALIGNMENT INSTRUCTIONS.
- BASE MUST BE COMPLETELY FILLED WITH GROUT PER NFPA 20.
- PUMP IS CW (CLOCKWISE) ROTATION WHEN VIEWED FROM THE COUPLING END.
- SUCTION AND DISCHARGE FLANGES DRILLED PER ANSI B16.1 (IF APPLICABLE).
- RAW WATER OUTLET SIZE VARIES BASED UPON SITE CONDITIONS. DEFAULT SIZE: 1-1/2" NPT
- CAUTION: ALL PLUMBING MUST BE SUPPORTED AND/OR ISOLATED SO THAT NO WEIGHT OR STRESS IS APPLIED TO ANY ENGINE COMPONENT.
- CAUTION: SPREADER BARS REQUIRED TO MOVE PACKAGE. DAMAGE DUE TO IMPROPER HANDLING IS NOT WARRANTABLE.



FOR OPTIONAL BASE MOUNTED CONTROLLER  
Ø1.0 X 2.0 SLOT  
6 PLACES  
BOTTOM FLANGE ONLY

EXHAUST OUTLET CONNECTION SIZE TABLE	
ENGINE MODEL	EXHAUST SIZE
C13H0-UFAD20, 22, 22-D 28, 30, 32, 32-D, 38, 40 50, 52, 52-D, 58, 60, 62, 62-D, 68	6" 150# FLG.
C13H0-UFAD70, 72, 72-D, 78	8" 150# FLG.

ITEM NO.	DESCRIPTION	CONNECTION SIZE
1	EXHAUST OUTLET CONNECTION	SEE EXHAUST TABLE
2	RAW WATER OUTLET	SEE NOTE 6.
3	FUEL SUPPLY CONNECTION	3/4" NPTF
4	FUEL RETURN CONNECTION	1/2" NPTF
5	HEATER JUNCTION BOX	VOLTAGE REQUIREMENTS: AC CONNECTION HEATER 2000 WATTS STD- 115 VAC +5%-10% OPT- 230 VAC +5%-10%



PUMP TYPE	PUMP SIZE		DIMENSIONS											
	SUCT.	DI SCH.	A	B	H	E	M	W	CP	D	YY	X	S	Z
8100 SERIES														
10x8x17F	10	8	118.0	54.0	28.0	17.4	17.0	22.6	39.6	16.0	18.0	16.0	10.0	10.0
10x8x20F	10	8	118.0	54.0	32.0	17.4	17.0	22.6	39.6	20.0	20.0	18.0	14.0	14.0
10x8x20F-L	10	8	118.0	54.0	32.0	17.4	17.0	22.6	39.6	20.0	20.0	18.0	14.0	14.0
12x10x18	12	10	118.0	54.0	30.0	17.4	17.0	22.6	39.6	18.0	20.0	18.0	11.0	11.0
8150 SERIES														
16x10x22F	16	10	128.0	59.0	36.0	20.2	24.4	29.8	54.3	24.0	29.0	24.0	14.0	14.0

Certified for:	<input type="checkbox"/> Approval	<input type="checkbox"/> Construction	By: _____	Date: _____	Listed: <input type="checkbox"/> UL <input type="checkbox"/> FM
Project:	Capacity:		Engine Supplier: CLARKE		
Customer:	Total Pressure:		Engine Model:		
Item / P.O. No.:	Pump Speed:		Engine Preheater Voltage:		
Quote No.:	Power:		Pump Serial No.:		
Pump Model:	Rotation: CLOCKWISE (Right Hand)		SO No.:		

ALL VIEWS 3rd ANGLE PROJECTION