

# CLARKE FIRE PUMP DRIVERS EPA NSPS TIER 3 ENGINE MODELS HSC APPLICATIONS



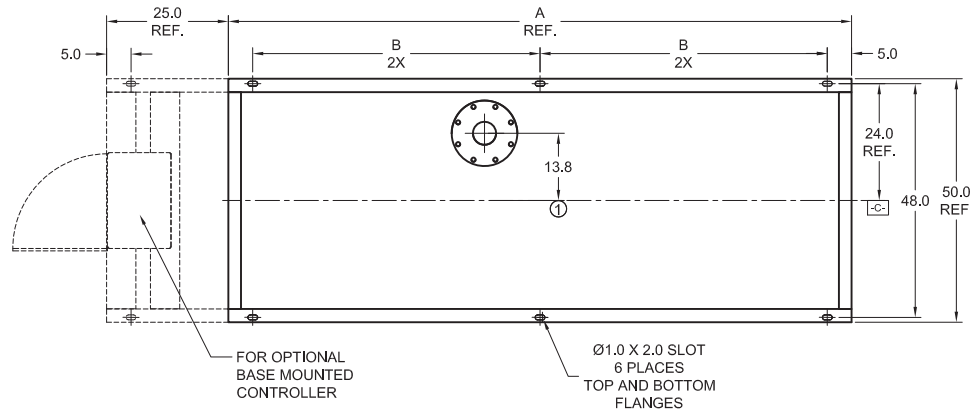
a xylem brand

Horizontal Split Case  
8100, 9100 Pumps

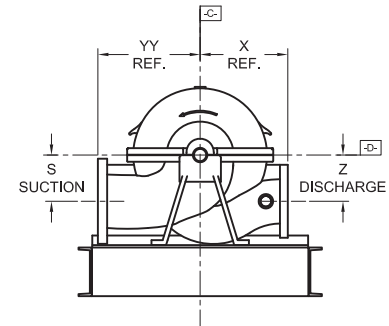
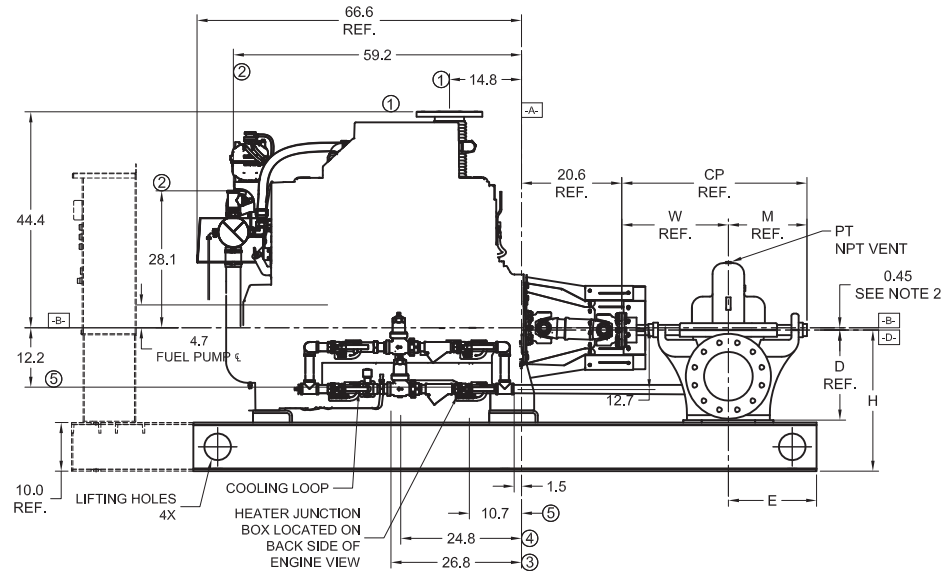
- A- - MOUNTING FACE OF FLYWHEEL
- B- - ENGINE CRANKSHAFT HORIZONTAL CENTERLINE
- C- - ENGINE CRANKSHAFT VERTICAL CENTERLINE
- D- - PUMP SHAFT HORIZONTAL CENTERLINE

NON-LISTED DRIVESHAFTS	
ENGINE MODEL	DRIVESHAFT MODEL
C18H0-UFAD12, 22, 32	SC2160A

\*PLD (-D) Option Available for All Models



- NOTES:
- GENERAL TOLERANCE: UNLESS OTHERWISE SPECIFIED, ALL DIMENSIONS ARE IN INCHES AND VARY 0.38".
  - THE DRIVE SHAFT IS DESIGNED TO OPERATE AT A 2° ANGLE WITH THE INPUT AND OUTPUT SHAFTS IN PARALLEL. THE ENGINE CRANKSHAFT IS TO BE SET WITH A PARALLEL OFFSET OF 0.45 ± 0.15 INCHES VERTICALLY ABOVE THE PUMP SHAFT AND 0.00" ± 0.15 INCH PARALLEL OFFSET HORIZONTALLY RIGHT OR LEFT OF THE PUMP SHAFT. REFER TO THE CERTIFIED DRIVESHAFT INSTRUCTIONS MANUAL FOR ALIGNMENT INSTRUCTIONS.
  - BASE MUST BE COMPLETELY FILLED WITH GROUT PER NFPA 20.
  - PUMP IS CW (CLOCKWISE) ROTATION WHEN VIEWED FROM THE COUPLING END.
  - SUCTION AND DISCHARGE FLANGES DRILLED PER ANSI B16.1 (IF APPLICABLE).
  - RAW WATER OUTLET SIZE VARIES BASED UPON SITE CONDITIONS. DEFAULT SIZE: 1-1/2" NPT
  - CAUTION: ALL PLUMBING MUST BE SUPPORTED AND/OR ISOLATED SO THAT NO WEIGHT OR STRESS IS APPLIED TO ANY ENGINE COMPONENT.
  - CAUTION: SPREADER BARS REQUIRED TO MOVE PACKAGE. DAMAGE DUE TO IMPROPER HANDLING IS NOT WARRANTABLE.



ITEM NO.	DESCRIPTION	CONNECTION SIZE
①	EXHAUST OUTLET CONNECTION	8" 150# FLG.
②	RAW WATER OUTLET	SEE NOTE 6.
③	FUEL SUPPLY CONNECTION	3/4" NPTF
④	FUEL RETURN CONNECTION	1/2" NPTF
⑤	HEATER JUNCTION BOX	VOLTAGE REQUIREMENTS: AC CONNECTION HEATER 3500 WATTS STD- 230 VAC ±5%-10%

PUMP TYPE	PUMP SIZE		DIMENSIONS												
	SUCT.	DISCH.	A	B	H	E	M	W	CP	D	YY	X	S	Z	PT
8100 SERIES															
12x10x18F	12	10	128.0	59.0	32.0	17.4	17.0	22.6	39.6	18.0	20.0	18.0	11.0	11.0	0.5
10x8x20F	10	8	128.0	59.0	34.0	17.4	17.0	22.6	39.6	20.0	20.0	18.0	14.0	14.0	0.5
8150 SERIES															
16x10x22F	16	10	138.0	64.0	38.0	20.2	24.4	29.8	54.3	24.0	29.0	24.0	14.0	14.0	1.0
9100 SERIES															
12x8x21F	12	8	138.0	64.0	33.0	21.8	21.8	28.3	50.0	19.0	21.0	21.0	12.0	12.0	1.0
14x10x20F	14	10	138.0	64.0	36.0	19.5	23.8	30.5	54.3	21.0	21.0	19.0	13.0	13.0	1.0
16x12x23F	16	12	138.0	64.0	38.0	19.5	23.8	30.5	54.3	23.0	25.0	25.0	14.0	14.0	1.0

Certified for:  Approval  Construction By: \_\_\_\_\_ Date: \_\_\_\_\_ Listed:  UL  FM

Project:	Capacity:	Engine Supplier: CLARKE
Customer:	Total Pressure:	Engine Model:
Item / P.O. No.:	Pump Speed:	Engine Preheater Voltage:
Quote No.:	Power:	Pump Serial No.:
Pump Model:	Rotation: CLOCKWISE (Right Hand)	SO No.: