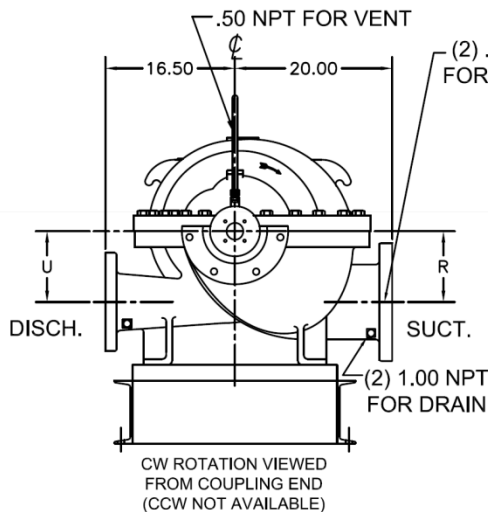
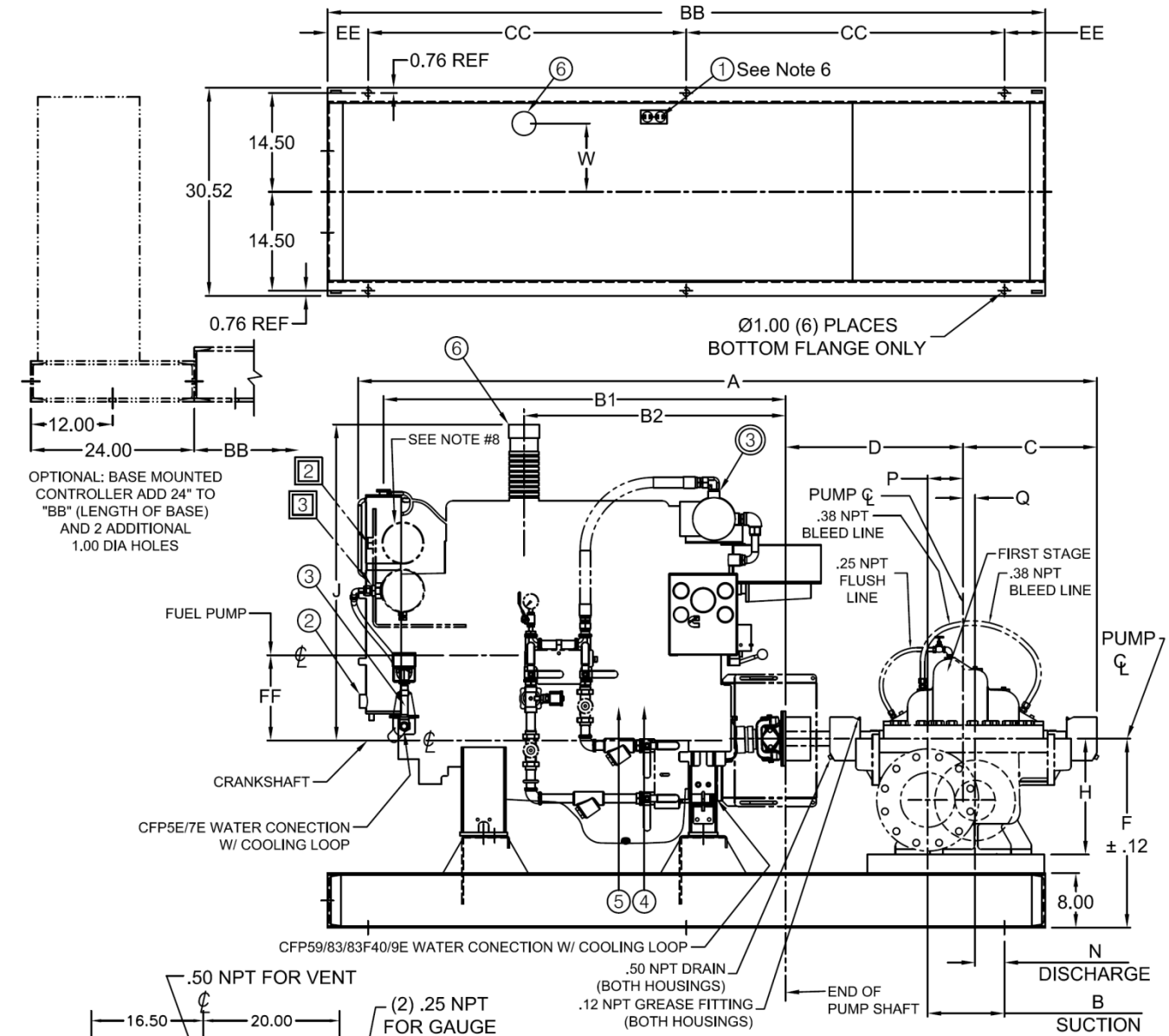


FIRE PUMP SYSTEMS
Dimensions - Cummins Fire Power MODELS
CFP33, CFP5E, CFP59
CFP7E, CFP83, CFP9E
8x6x14F-S, 8x6x14F-L & 8x6x18F 8200 Series Pump

ALL DIMENSIONS IN INCHES



CW ROTATION VIEWED FROM COUPLING END (CCW NOT AVAILABLE)

Item No.	Description	CFP33/39/59	CFP5E/7E	CFP83	CFP9E
⑥	Exhaust Outlet Conn.	3" NPTM	3" NPTM	4" NPTM	4" NPTM
⑤	Fuel Supply Conn.	1/4" NPTF	1/2" NPTF	3/8" NPTF	1/2" NPTF
④	Fuel Return Conn	1/4" NPTF	3/8" NPTF	1/4" NPTF	3/8" NPTF
③	Raw Water Inlet	—	3/4" NPTF	—	—
②	Raw Water Outlet	—	1" NPTF	—	—
③	Raw Water Inlet	—	—	1" NPTF (83F40)	1" NPTF
③	Raw Water Inlet	3/4" NPTF	—	1" NPTF	—
②	Raw Water Outlet	1" NPTF	—	1-1/4" NPTF	1-1/4" NPTF
①	Heater Connection	1500 watt	1500 watt	2250 watt	2250 watt

FIRE PUMP SYSTEMS
Dimensions - Cummins Fire Power MODELS
CFP33, CFP5E, CFP59
CFP7E, CFP83, CFP9E
8x6x14F-S, 8x6x14F-L & 8x6x18F 8200 Series Pump



ALL DIMENSIONS IN INCHES

PUMP	ENGINE	"A"	"B"	"B1"	"B2"	"C"	"D"	"F"	"H"	"J"	"N"	"P"	"Q"	"R&U"	"BB"	"CC"	"EE"	"FF"	"W"
8x6x14F 8200	CFP33-F10,F30	89.28	13.00	40.39	30.51	19.62	26.12	27.35	17	40.44	6.00	5.25	1.75	9	86	37	6	6.42	10.82
	CFP5E-F10 THRU F50	98.60	26.38	45.15	35.29	19.62	26.12	28.19	17	42.64	19.38	5.25	1.75	9	100	44	6	2.28	7.62
	CFP59-F10 THRU F55	100.42	13.00	51.42	37.61	19.62	26.12	27.69	17	43.54	6.00	5.25	1.75	9	105.50	46.75	6	10.70	6.60
	CFP7E-F10 THRU F60	109.68	11.32	56.25	41.68	19.62	26.12	27.75	17	43.35	4.32	5.25	1.75	9	105.50	46.75	6	2.28	7.18
8x6x18F 8200	CFP5E-F10 THRU F50	98.60	26.38	45.15	35.29	19.62	26.12	31.19	19	42.64	19.38	5.25	1.75	11	100	44	6	2.28	7.62
	CFP59-F10 THRU F55	100.42	13.00	51.42	37.61	19.62	26.12	31.69	19	43.54	6.00	5.25	1.75	11	105.50	46.75	6	10.70	6.60
	CFP7E-F10 THRU F60	109.68	11.32	56.25	41.68	19.62	26.12	31.75	19	43.35	4.32	5.25	1.75	11	105.50	46.75	6	2.28	7.18
	CFP83-F10 THRU F40	108.48	11.13	59.25	38.68	19.62	26.12	31.75	19	46.25	4.13	5.25	1.75	11	105.50	46.75	6	12.51	10.03
	CFP9E-F10 THRU F60	116.48	17.63	67.25	47.12	19.62	26.12	31.81	19	46.25	10.63	5.25	1.75	11	120.00	54	6	12.51	10.03

NOTES

- All dimensions are inches $\pm .125"$ tolerance unless otherwise specified.
 Caution
 The UL listed drive shaft is not designed to operate at 0° angle.
 The UL listing covers 2° $\pm 1^\circ$.
 Refer to the engine manual for alignment
- Suction and discharge connections per ANSI B16.1. Holes in flanges straddle center line .
- Base plate setting (before piping), grouting procedures, and final alignment must be in accordance with A-C Fire Pump Systems recommended procedures outlined in the Instruction Manual associated with this pump type.
- Both suction and discharge pipes must be supported independently near the pump to reduce strain on the pump casing. Also expansion joints, if used must not exert force on the casing.
- Coupling guard to meet ANSI/OSHA requirements.
- Heater voltage requirements: 120 VAC, 240 VAC optional. Do not energize until engine coolant has been installed.
- These units are available in both standard and high working pressures. Unit is denoted with an "H" prefix when specifying high working pressures. Example H6x4x11F. Refer to engineering data for actual working pressure values. High pressure pumps have 250 F.F. flanges per B16.1 unless noted.

NOT FOR CONSTRUCTION, INSTALLATION OR APPLICATION PURPOSES UNLESS CERTIFIED.											
CERTIFIED FOR:							APPROVAL		UL <input type="checkbox"/>	FM <input type="checkbox"/>	ULC <input type="checkbox"/>
CUSTOMER ORDER NO:					IDENTIFICATION NO:			FLANGES			
PUMP DATA	SIZE	MODEL	CURVE NO.	GPM	HEAD (FT.)	ROTATION	SUCTION	DISCHARGE			
						CW					
ENGINE DATA	MAKE	MODEL	HP	RPM	VOLTAGE	POLARITY	MAX ALTITUDE				
	CUMMINS					NEG.					
SHOP ORDER:			CERTIFIED BY:			TOTAL WEIGHT		DATE:			