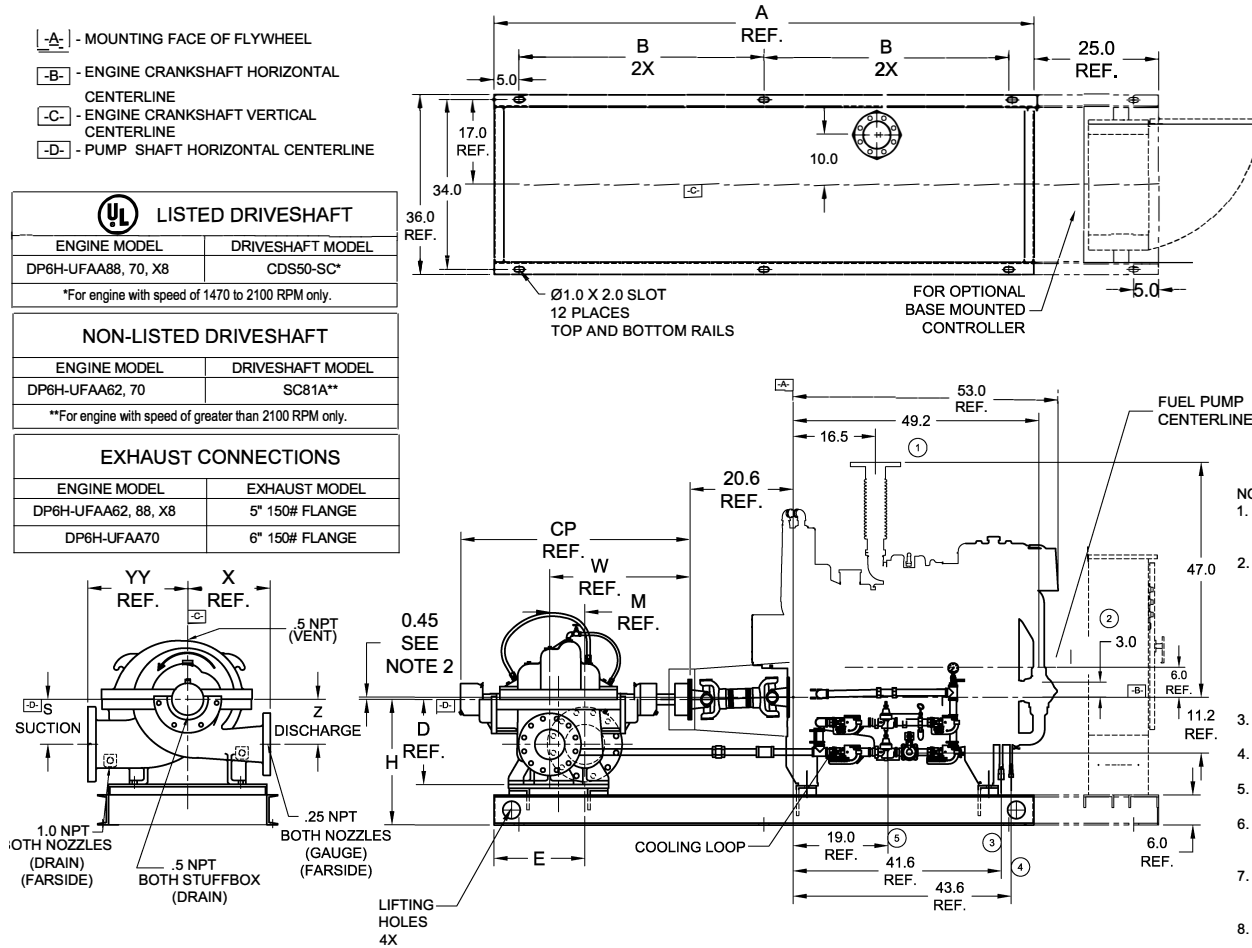


**Series 8250 (DP6H)
Non-Emission Engine Models**

- A- | - MOUNTING FACE OF FLYWHEEL
- B- | - ENGINE CRANKSHAFT HORIZONTAL CENTERLINE
- C- | - ENGINE CRANKSHAFT VERTICAL CENTERLINE
- D- | - PUMP SHAFT HORIZONTAL CENTERLINE

LISTED DRIVESHAFT	
ENGINE MODEL	DRIVESHAFT MODEL
DP6H-UFAA88, 70, X8	CDS50-SC*
*For engine with speed of 1470 to 2100 RPM only.	
NON-LISTED DRIVESHAFT	
ENGINE MODEL	DRIVESHAFT MODEL
DP6H-UFAA62, 70	SC81A**
**For engine with speed of greater than 2100 RPM only.	
EXHAUST CONNECTIONS	
ENGINE MODEL	EXHAUST MODEL
DP6H-UFAA62, 88, X8	5" 150# FLANGE
DP6H-UFAA70	6" 150# FLANGE



Learn more about
Series 8250 Fire Pumps



ITEM NO.	DESCRIPTION	CONNECTION SIZE
①	EXHAUST OUTLET CONNECTION	SEE EXHAUST LISTING
②	RAW WATER OUTLET	SEE NOTE 6.
③	FUEL SUPPLY CONNECTION	1/2" NPTF
④	FUEL RETURN CONNECTION	3/8" NPTF
⑤	HEATER JUNCTION BOX	VOLTAGE REQUIREMENTS: AC CONNECTION HEATER 1500 WATTS STD- 230 VAC ±5%-10% OPT- 115 VAC ±5%-10%

- NOTES:
- GENERAL TOLERANCE: UNLESS OTHERWISE SPECIFIED, ALL DIMENSIONS ARE IN INCHES AND VARY 0.38".
 - THE DRIVE SHAFT IS DESIGNED TO OPERATE AT A 2° ANGLE WITH THE INPUT AND OUTPUT SHAFTS IN PARALLEL. THE ENGINE CRANKSHAFT IS TO BE SET WITH A PARALLEL OFFSET OF 0.45 ±0.11 INCHES VERTICALLY ABOVE THE PUMP SHAFT AND 0.00" ±0.11 INCH PARALLEL OFFSET HORIZONTALLY RIGHT OR LEFT OF THE PUMP SHAFT. REFER TO THE CERTIFIED DRIVESHAFT INSTRUCTIONS MANUAL FOR ALIGNMENT INSTRUCTIONS.
 - BASE MUST BE COMPLETELY FILLED WITH GROUT PER NFPA 20.
 - PUMP IS CW (CLOCKWISE) ROTATION WHEN VIEWED FROM THE COUPLING END.
 - SUCTION AND DISCHARGE FLANGES DRILLED PER ANSI B16.1 (IF APPLICABLE).
 - RAW WATER DRAIN PIPING SIZE VARIES BASED UPON SITE CONDITIONS. ENGINE CONN. SIZE: 1-1/2" NPT.
 - CAUTION: ALL PLUMBING MUST BE SUPPORTED AND/OR ISOLATED SO THAT NO WEIGHT OR STRESS IS APPLIED TO ANY ENGINE COMPONENT.
 - CAUTION: SPREADER BARS REQUIRED TO MOVE PACKAGE. DAMAGE DUE TO IMPROPER HANDLING IS NOT WARRANTABLE.

PUMP TYPE	PUMP SIZE	DIMENSIONS												
		SUCT.	DISCH.	A	B	H	E	M	W	CP	D	YY	X	S
8x6x13F	8	6	118.0	54.0	26.0	27.2	23.2	22.8	46.0	18.5	26.0	20.0	9.0	9.0

ALL VIEWS 3rd ANGLE PROJECTION

NOT FOR CONSTRUCTION, INSTALLATION OR APPLICATION PURPOSES UNLESS CERTIFIED.							
CERTIFIED FOR:				APPROVAL			
				<input type="checkbox"/> UL <input type="checkbox"/> FM <input type="checkbox"/> ULC			
CUSTOMER ORDER NO.:		IDENTIFICATION NO.:		FLANGES			
PUMP DATA	SIZE	MODEL	CURVE NO.	GPM	HEAD (FT.)	ROTATION	FLANGES
						CW	SUCTION DISCHARGE
ENGINE DATA	MAKE	MODEL	HP	RPM	VOLTAGE	POLARITY	MAX ALTITUDE
	CLARKE					NEG.	
SHOP ORDER:		CERTIFIED BY:		TOTAL WEIGHT		DATE:	