

DOUBLE WALL FUEL TANK

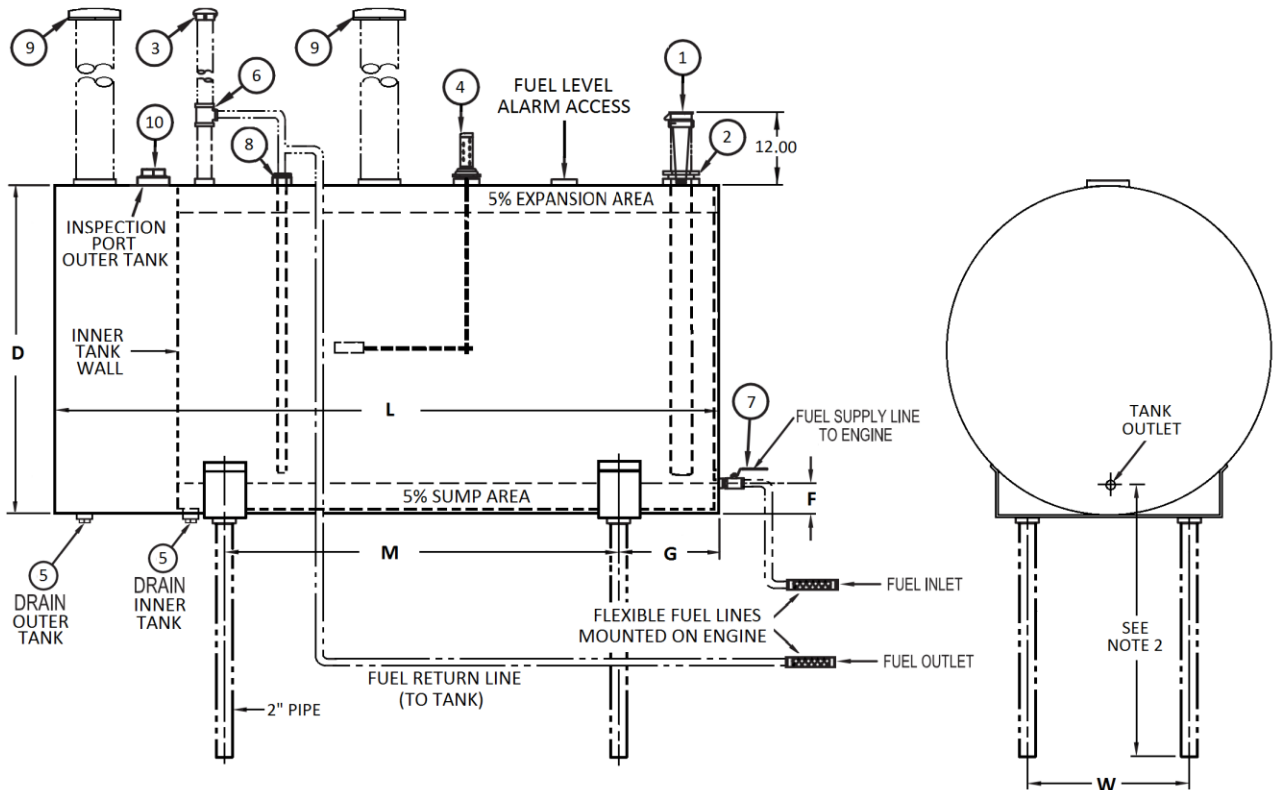
TYPE: ABOVE GROUND HORIZONTAL
 APPROVALS: UL 142
 MATERIAL: MILD CARBON STEEL
 TEST PRESSURE: 3-5 PSI
 PAINT: EXTERIOR ONLY TNE MEC N69 CRAWFORD RED

NOTES

- ITEMS DISPLAYED IN PHANTOM LINES FURNISHED BY OTHERS TO CONFORM TO INDIVIDUAL JOB REQUIREMENTS.
- LOCATE TANK OUTLET LEVEL OR ABOVE THE ENGINE FUEL PUMP CENTERLINE.
- INSTALL TANK IN ACCORDANCE WITH REQUIREMENTS OF LOCAL CODES AND STADNARS. ARRANGE TANK AS CLOSE TO ENGINE AS POSSIBLE.
- PITCH TANK TOWARDS DRAIN .25" PER FOOT.
- FOR PROPER FUEL SUPPLY AND RETURN SIZE SEE ENGINE MANUFACTURER'S RECOMENDATIONS.
- PER LATEST EDITION OF NFPA 20 ALL TANK VENTS SHALL TERMINATE 5' FROM ANY BUILDING OPENING AND 12' FROM GROUND LEVEL.

TANK SIZE (GALLONS)	D	F	G	L	M	W	WEIGHT LB.
61	21.00	3.00	9.00	56.00	27.00	12.00	200
70	25.00	3.63	6.00	47.00	24.00	16.88	205
119	25.00	3.20	8.50	72.00	44.00	14.00	300
140	25.00	3.88	15.00	83.00	42.00	17.50	350
187	31.00	4.13	8.50	72.00	44.00	16.00	455
200	33.00	4.51	8.00	71.00	44.00	22.62	410
231	35.00	3.87	7.50	70.00	44.00	23.00	550
250	33.00	4.38	15.00	83.00	42.00	22.62	575
300	39.00	4.88	8.50	72.00	44.00	23.00	7501
359	39.00	4.88	14.50	84.00	44.00	23.00	825
460	49.00	5.88	8.00	71.00	44.00	34.00	965
572	49.00	5.88	14.50	84.00	44.00	30.00	1000
650	53.00	6.38	17.75	82.00	44.00	30.00	1150
704	61.00	7.00	7.00	69.00	44.00	30.00	1300
849	65.00	7.38	8.50	72.00	44.00	30.00	1700
968	65.00	7.38	13.00	81.00	44.00	30.00	1800

ITEM	QTY	DESCRIPTION
1	1	FILL CAP WITH PROVISIONS FOR PADLOCK COMBINED WITH REMOVABLE STRAINER MAX .06 MESH, 2" NPT
2	1	DOUBLE TAP BUSHING, 3" x 2" NPT
3	1	VENT CAP W/ INSECT SCREEN, 2" NPT
4	1	DIRECT READING TANK GAUGE, 2" NPT
5	2	PIPE PLUG, 1" NPT
6	1	PIPE TEE, 2" x 2" x .5" NPT
7	1	BALL VALVE, .75" NPT WITH PROVISION FOR PADLOCK
8	1	DOUBLE TAP BUSHING, 1.5" x .5" NPT
9	2	EMERGENCY RELIEF VENT, 4" NPT
10	1	PIPE PLUG, 2" NPT



NOT FOR CONSTRUCTION, INSTALLATION OR APPLICATION PURPOSES UNLESS CERTIFIED		
CERTIFIED FOR:		
CUSTOMER ORDER NO.:	TAG NO.	
SHOP ORDER:	CERTIFIED BY:	DATE: