

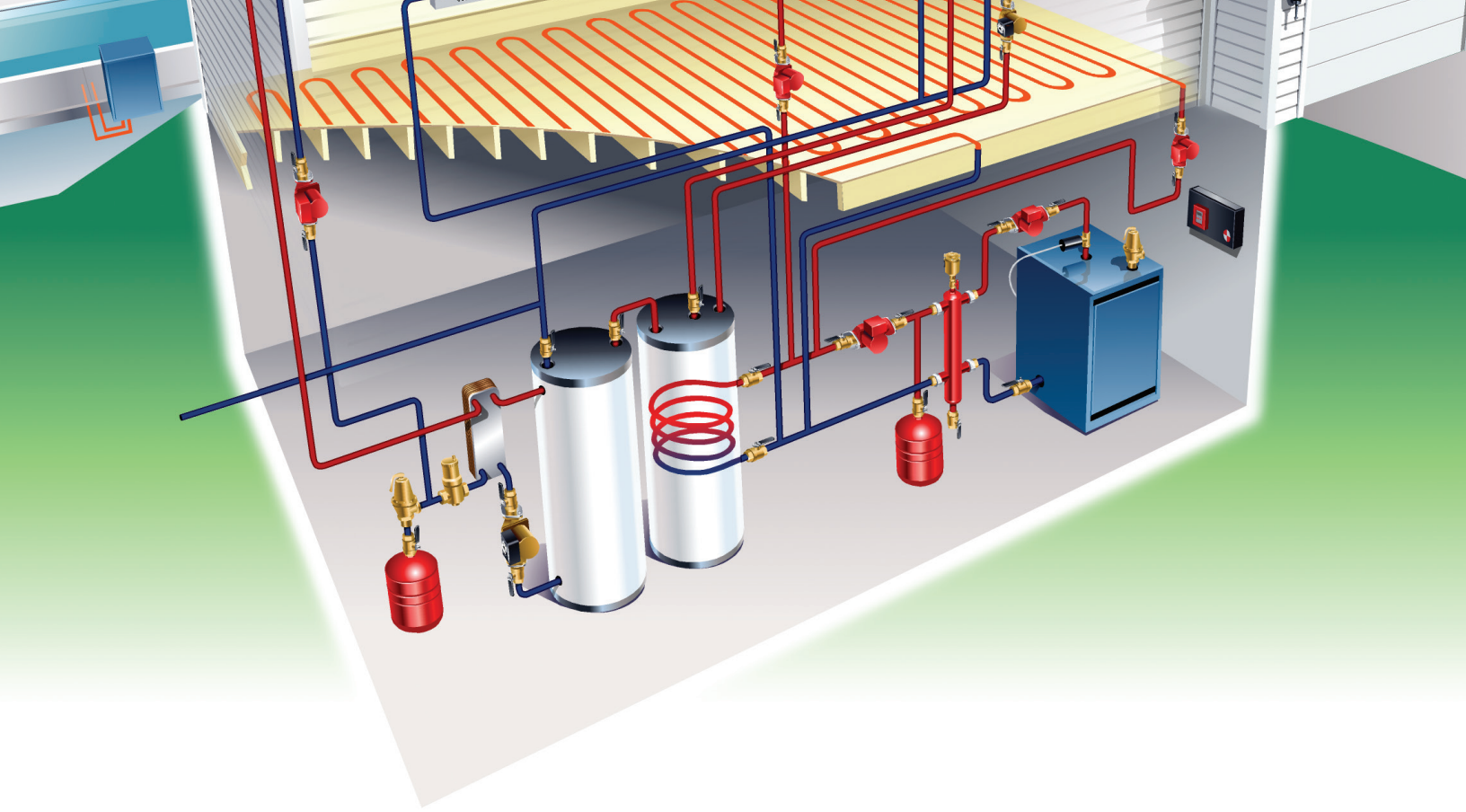
xylem

Check-Trol®

Isolaton flow control flange



Featuring press connect fittings. Faster. Easier. Safer.



Three features in one valve

Xylem's Bell & Gossett Check-Trol® is an ideal solution for circulator installations. Installing a Check-Trol on the discharge of the circulator gives you the features of a Flow Control Valve, Isolation Valve and Companion Flange. Another advantage of the Check-Trol is the minimal pressure drop, especially when compared to the losses that can be experienced when a check valve is installed internal to the circulator.

The Check-Trol flanges are packaged with an isolation flange of the same size to create a pair. Capscrews and nuts are included.

Flow control valve

Prevents gravity circulation and flow in the wrong direction.

Isolation valve

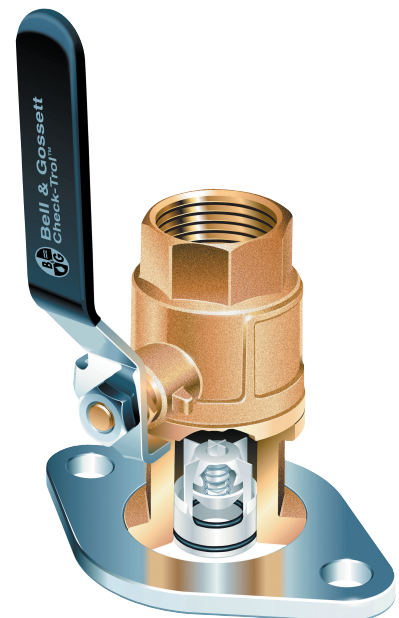
Allows for servicing or replacement of the circulator without draining the system.

Companion flange

Free-floating companion flanges allow easy alignment for optimal handle positioning.

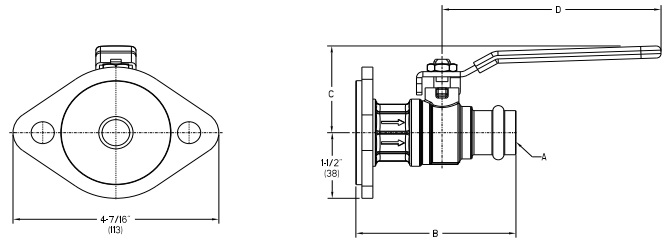
Can be used with most circulators, including ecocirc® 20-18, ecocirc XL, NRF/NBF/SSF wet rotors, Series PLs, 100, PR and LR, and other manufacturers' pumps.

Available sizes: 3/4", 1", 1-1/4", 1-1/2" NPT and sweat.



Check-Trol® Isolation flow control flange

The Check-Trol flange is a combination isolation valve, flow control valve, and companion flange for circulators. The full port ball valve allows the circulator to be removed from the system without draining the system. The internal spring check prevents gravity circulation. Free floating companion flange makes pump installation a snap.



Typical specifications

Furnish and install on plans _____(inches) NPT/Sweat x Flange Check-Trol flange on the pump discharge. The Check-Trol flange will prevent gravity circulation and flow in the wrong direction. When closed, it will provide positive shut-off. The mating flange shall be free floating allowing it to rotate elimination the need to align the bolt holes of the flanges when installing to the piping system. The Check-Trol flange shall be constructed with a brass body, chrome plated brass ball, chrome plated flange and handle, and Teflon packing and seat ring and a non-ferrous check. The Check-Trol flange shall be Bell & Gossett or equal.

Operating data

Maximum working pressure.....150 psi (10 bar)
Maximum operating temperature.....200°F (93°C)

Materials of construction

Valve body.....Lead-free* brass
Flange.....Chrome plated steel
Ball.....Chrome plated lead-free* brass
Packing.....PTFE
Seat ring.....PTFE
Stem.....Lead-free brass
Spring check.....Nitrile, acetal, stainless steel

*CSA certified to NSF/ANSI 372 that product contains less than 0.25% lead content by weight on wetted surfaces.

Dimension and weights

Part No.	Size (inches)	Model	Use with the following circulators	Dimensions – inches (mm)				Approx. Shpg. Wt. Lbs. (Kg)
				A	B	C	D	
101231LF 101232LF 101233LF 101245LF	3/4" NPTI X FL 1" NPTI X FL 1 1/4" NPTI X FL 1 1/2" NPTI X FL	CTF-3/4 CTF-1 CTF-1-1/4 CTF-1-1/2	ecocirc 20-18/ecocirc+ 20-18 ecocirc XL 20-35, 36-45, 55-45 NRF/NBF/SSF Wet Rotor Series PL-30, PL-36, PL-55, PL-100 Series 100, PR, and LR Not for use with NRF/NBF-45, HV flanges required.	3/4" NPTI 1" NPTI 1 1/4" NPTI 1 1/2" NPTI	3-7/64" (79.0) 3-15/16" (100.0) 4-25/32" (121.4) 4-27/32" (122.9)	2" (50.5) 2-5/32" (54.7) 3" (75.9) 3" (75.9)	4-23/32" (120.0) 4-23/32" (120.0) 6-7/32" (158.0) 6-7/32" (158.0)	3.4 (1.5) 4.4 (2.0) 6.3 (2.8) 6.6 (3.0)
101236LF 101237LF 101238LF 101247LF	3/4" SWT X FL 1" SWT X FL 1 1/4" SWT X FL 1 1/2" SWT X FL	CTFS-3/4 CTFS-1 CTFS-1-1/4 CTFS-1-1/2		3/4" SWT 1" SWT 1 1/4" SWT 1 1/2" SWT	3-21/64" (84.5) 4-1/64" (102.0) 4-55/64" (123.4) 5-1/64" (127.4)	2" (50.5) 2-5/32" (54.7) 3" (75.9) 3" (75.9)	4-23/32" (120.0) 4-23/32" (120.0) 6-7/32" (158.0) 6-7/32" (158.0)	3.4 (1.5) 4.2 (1.9) 5.9 (2.7) 6.5 (3.0)
101251LF 101252LF 101253LF 101254LF	3/4" PC X FL 1" PC X FL 1 1/4" PC X FL 1 1/2" PC X FL	CTFP-3/4 CTFP-1 CTFP-1-1/4 CTFP-1-1/2		3/4" PC 1" PC 1 1/4" PC 1 1/2" PC	3-7/16" (87.7) 4-3/16" (106.2) 4-63/64" (126.5) 5-13/32" (137.5)	2" (50.5) 2-5/32" (54.7) 3" (75.9) 3" (75.9)	4-23/32" (120) 4-23/32" (120) 6-15/64" (158.4) 6-15/64" (158.4)	1.47 (0.67) 1.92 (0.87) 3.14 (1.42) 3.24 (1.47)

NPTI - National Pipe Thread Internal, SWT - Sweat Fitting, PC - Press Connect, FL - Flange Connection

Dimensions and weights are approximate and subject to change. Contact factory for certified dimensions. Check-Trol flange is sold with an isolation flange as a pair.



**Learn more about
Check-Trol Flanges**

Xylem
8200 N. Austin Avenue
Morton Grove, Illinois 60053

Tel +1 847.966.3700
Fax +1 847.965.8379
www.xylem.com/bellgossett

All information presented herein is believed reliable and in accordance with accepted engineering practices. Xylem makes no warranties as to the completeness of this information. Users are responsible for evaluating individual product suitability for specific applications. Xylem assumes no liability whatsoever for any special, indirect or consequential damages arising from the sale, resale or misuse of its products. Subject to change without notice.

© 2025 Xylem, Bell & Gossett, ecocirc and Check-Trol are trademarks of Xylem, Inc. or one of its subsidiaries. All other trademarks are the property of their respective owners.

A-118K 4/2025