

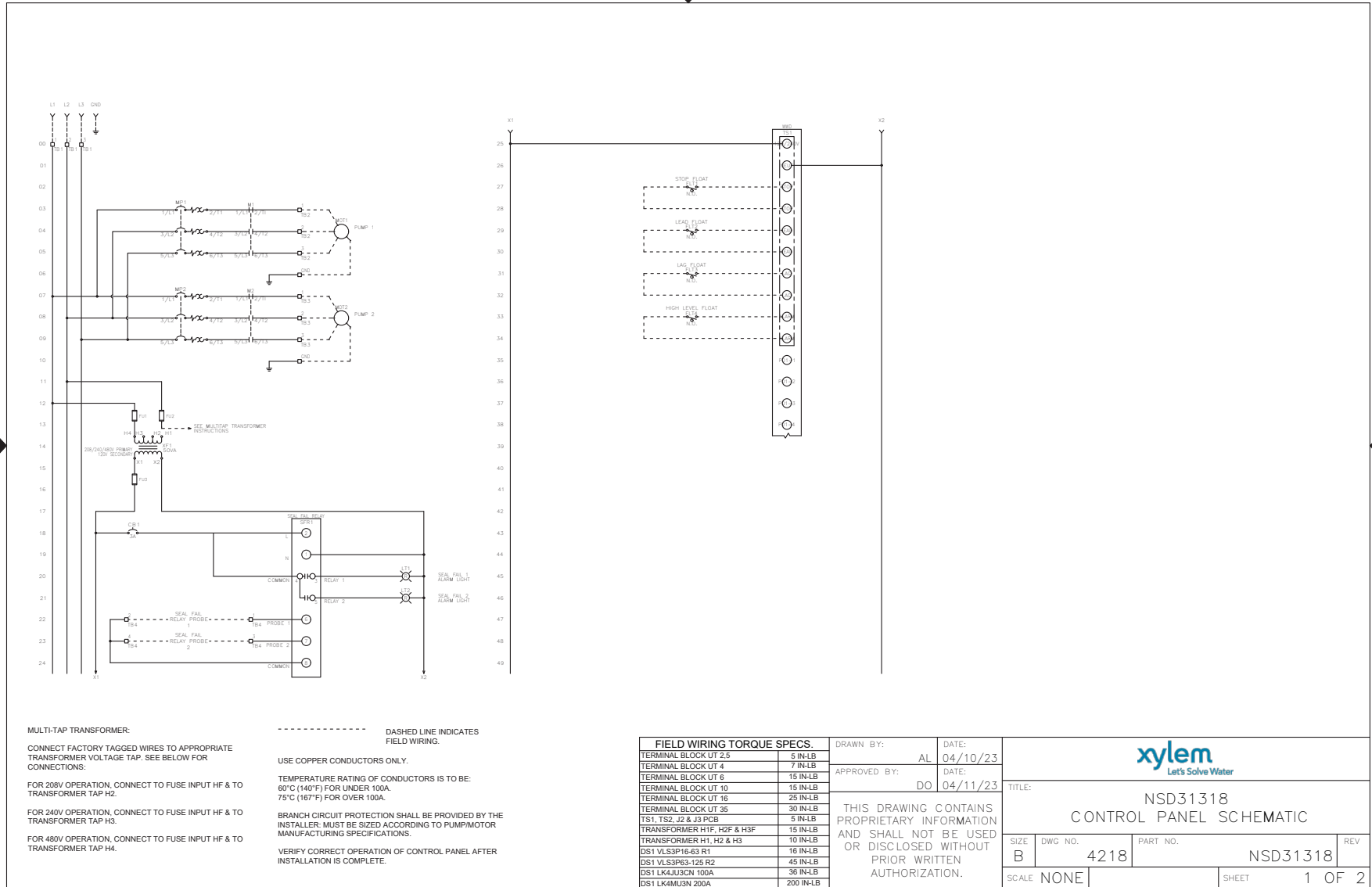
4DWC Duplex NSD31318

Control Panel Schematic and Layout

CONTROL PANEL SCHEMATIC

FNAME: NSD31318

REVDATE: 0423



DRAWN BY: AL DATE: 04/10/23
APPROVED BY: DO DATE: 04/11/23

THIS DRAWING CONTAINS PROPRIETARY INFORMATION AND SHALL NOT BE USED OR DISCLOSED WITHOUT PRIOR WRITTEN AUTHORIZATION.

xylem
Let's Solve Water

TITLE: NSD31318 CONTROL PANEL SCHEMATIC

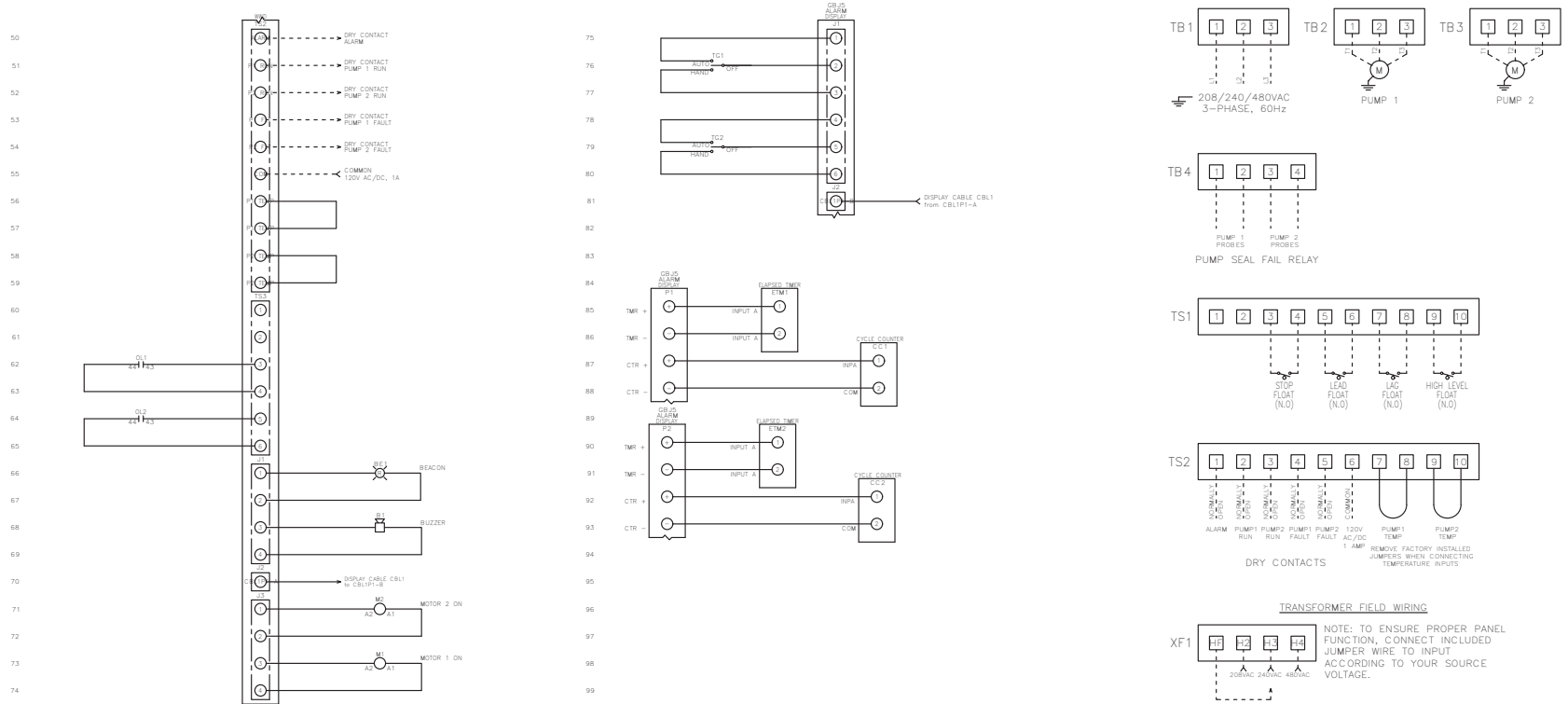
SIZE B	DWG NO. 4218	PART NO. NSD31318	REV 001
SCALE NONE	SHEET 1 OF 2		

CONTROL PANEL SCHEMATIC

BGNSD31318 R1

FNAME: NSD31318

REVDATE: 0423



MULTI-TAP TRANSFORMER:
 CONNECT FACTORY TAGGED WIRES TO APPROPRIATE TRANSFORMER VOLTAGE TAP. SEE BELOW FOR CONNECTIONS:
 FOR 208V OPERATION, CONNECT TO FUSE INPUT HF & TO TRANSFORMER TAP H2.
 FOR 240V OPERATION, CONNECT TO FUSE INPUT HF & TO TRANSFORMER TAP H3.
 FOR 480V OPERATION, CONNECT TO FUSE INPUT HF & TO TRANSFORMER TAP H4.

----- DASHED LINE INDICATES FIELD WIRING.
 USE COPPER CONDUCTORS ONLY.
 TEMPERATURE RATING OF CONDUCTORS IS TO BE: 60°C (140°F) FOR UNDER 100A, 75°C (167°F) FOR OVER 100A.
 BRANCH CIRCUIT PROTECTION SHALL BE PROVIDED BY THE INSTALLER; MUST BE SIZED ACCORDING TO PUMP/MOTOR MANUFACTURING SPECIFICATIONS.
 VERIFY CORRECT OPERATION OF CONTROL PANEL AFTER INSTALLATION IS COMPLETE.

FIELD WIRING TORQUE SPECS.	
TERMINAL BLOCK UT 2-5	5 IN-LB
TERMINAL BLOCK UT 4	7 IN-LB
TERMINAL BLOCK UT 6	15 IN-LB
TERMINAL BLOCK UT 10	15 IN-LB
TERMINAL BLOCK UT 16	25 IN-LB
TERMINAL BLOCK UT 35	30 IN-LB
TS1, TS2, J2 & J3 PCB	5 IN-LB
TRANSFORMER H1F, H2F & H3F	15 IN-LB
TRANSFORMER H1, H2 & H3	10 IN-LB
DS1 VLS3P63-63 R1	16 IN-LB
DS1 VLS3P63-125 R2	45 IN-LB
DS1 LK4JU3CN 100A	36 IN-LB
DS1 LK4MU3N 200A	200 IN-LB

DRAWN BY: AL DATE: 04/10/23
 APPROVED BY: DO DATE: 04/11/23
 THIS DRAWING CONTAINS PROPRIETARY INFORMATION AND SHALL NOT BE USED OR DISCLOSED WITHOUT PRIOR WRITTEN AUTHORIZATION.

xylem
 Let's Solve Water

TITLE: NSD31318 CONTROL PANEL SCHEMATIC

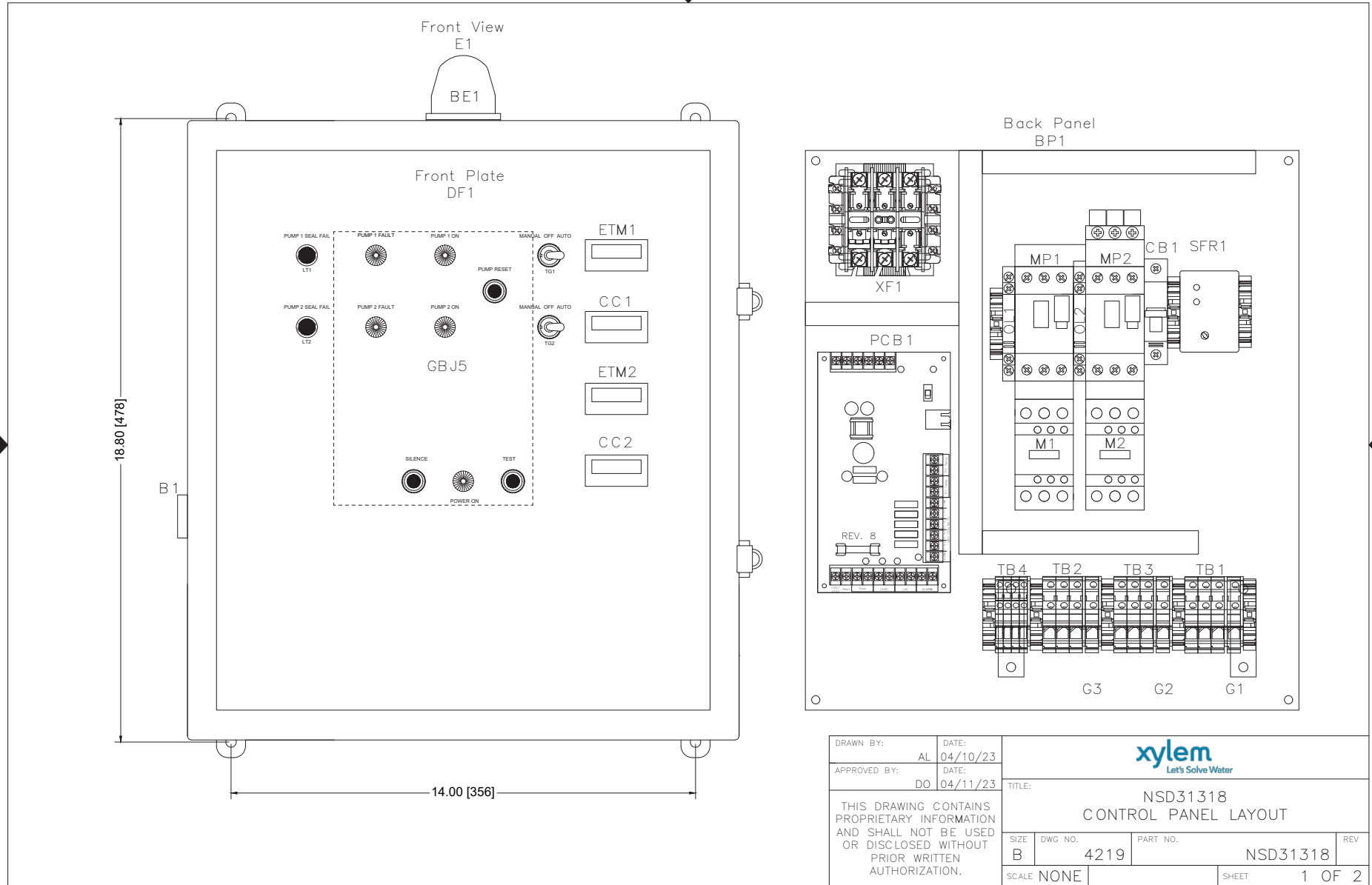
SIZE: B	DWG NO.: 4218	PART NO.: NSD31318	REV: 1
SCALE: NONE	SHEET: 2 OF 2		


CONTROL PANEL LAYOUT

BGNSD31318 R1

FNAME: NSD31318

REVDATE: 0523



DRAWN BY: AL		DATE: 04/10/23		 Let's Solve Water	
APPROVED BY: DO		DATE: 04/11/23			
THIS DRAWING CONTAINS PROPRIETARY INFORMATION AND SHALL NOT BE USED OR DISCLOSED WITHOUT PRIOR WRITTEN AUTHORIZATION.				TITLE: NSD31318 CONTROL PANEL LAYOUT	
SIZE	DWG NO.	PART NO.	REV		
B	4219	NSD31318			
SCALE NONE			SHEET 1 OF 2		


CONTROL PANEL LAYOUT

FNAME: NSD31318

REYDATE: 0423

QTY	MANUFACTURER	DESCRIPTION	PART NUMBER	REF.
1	Saginaw	P.C. Nema 4X Enclosure 18x16x10	H181610HCLL	E1
1	All-Spec	Dead Front	624P	DF1
1	All-Spec	Back Panel	625	BP1
1	Integra	Hinge Kit	US0PK-P909	N/A
1	Ingram	Beacon	R10-SM	BE1
1	Ingram	Buzzer	PB-024-AD	B1
2	VCC	Red Light 125V	1050QC1	LT1-2
1	See Water	Display Board	GBJ5	GBJ5
5	LEDTRONICS	White Lense	LENS-LCD780-CW F	N/A
2	See Water	Flat Cable Assembly	IDC-25MB	N/A
2	Molex	4 Pin Connector	09-50-3041	N/A
1	Molex	6 Pin Connector	09-50-3061	N/A
1	See Water	Power Circuit Board	WWD	PCB1
2	Carling	HOA Toggle Switch	6FC57-73	TG1,2
1	Schneider	Multitap Transformer 50VA	9070TF50D20	XF1
2	Mersen	ATQR 3/10A Fuse	ATQR-3/10A	XF1
1	Mersen	TRM 6/10A Fuse	TRM-6/10A	XF1
2	Schneider	Motor Protector	GV2ME20	MP1-2

QTY	MANUFACTURER	DESCRIPTION	PART NUMBER	REF.
2	Schneider	Side Mount Auxiliary	GVAN11	OL1-2
2	Schneider	Contact	LC1D18JL	M1-2
2	Schneider	GV2 Combination Block	GV2AF3	N/A
1	Schneider	GV2 BusBar	GV2G254	N/A
1	Schneider	Top Feed Terminal Block	GV1G09	N/A
1	Noark	Circuit Breaker 3A 1 Pole	B1E1C3	CB1
1	Macromatics	Seal Fail Dual Channel Relay	SFP120C100	SFR1
1	Macromatics	8 Pin Socket	70169-D	SFR1
2	Trumeter	Elapsed Time Meter	6320-2500-0000	ETM1-2
2	Trumeter	Cycle Counter	6300-2500-0000	CC1-2
4	Phoenix Contact	Terminal Block UT-4	3044102	TB4
9	Phoenix Contact	Terminal Block UT-10	3044160	TB1-3
3	Phoenix Contact	Terminal Block UT-10-PE	3044173	G1-3
8	Phoenix Contact	End Stop	3022218	N/A
5	Phoenix Contact	End Cover	3047028	N/A
2	Altech	Angled Mounting Bracket	CA603	N/A
4	See Water	N.O. Narrow Angle Floats 50'	FPC0N50	N/A
1	UL	508A UL Label	N/A	N/A

DRAWN BY:	AL	DATE:	04/10/23	 Let's Solve Water
APPROVED BY:	DO	DATE:	04/11/23	
THIS DRAWING CONTAINS PROPRIETARY INFORMATION AND SHALL NOT BE USED OR DISCLOSED WITHOUT PRIOR WRITTEN AUTHORIZATION.				TITLE:
				NSD31318 CONTROL PANEL LAYOUT
SIZE	DWG. NO.	PART NO.	REV	
B	4219	NSD31318		
SCALE	NONE	SHEET	2 OF 2	



Xylem Inc.
 2881 East Bayard Street Ext.
 Seneca Falls, NY 13148
 Phone: (800) 453-6777
 Fax: (888) 322-5877
www.xylem.com/bellgossett