

Job	Representative	
Unit tag	Order number	Date
Engineer	Submitted by	Date
Contractor	Approved by	Date



ASME Compression Tanks

Air Control

The compression tank absorbs the expansion forces of the system water and provides proper pressurization under varying operating conditions. Used with Airtrol Fittings it provides positive air control.

Construction

These tanks are constructed of carbon steel in accordance with Section VIII, Division I of the ASME Boiler and Pressure Vessel Code - and so stamped.

Performance limitations

Maximum design pressure:
Model 15 – 100: 150 psig (1,034 kPa)
Model 120 – 505: 125 psig (862 kPa)
Design temperature: 450°F (232°C)

Schedule

Part number	Model number	Capacity gal (L)	Required Airtrol tank fittings	Tagging information	Quantity
116661	15	15 (57)	ATF-12		
116662	24	24 (91)	ATF-12		
116663	30	30 (114)	ATF-12		
116664	40	40 (151)	ATF-12		
116665	60	60 (227)	ATF-16		
116666	80	80 (303)	ATF-20		
116667	100	100 (379)	ATF-20 or ATFL		
116668	120	120 (454)	ATF-24 or ATFL		
116669	135	135 (511)	ATF-24 or ATFL		
116670	175	175 (662)	ATFL		
116671	220	220 (833)	ATFL		
116672	240	240 (908)	ATFL		
116673	305	305 (1,154)	ATFL		
116674	400	400 (1,514)	ATFL		
116675	505	505 (1,912)	ATFL		

Typical specification

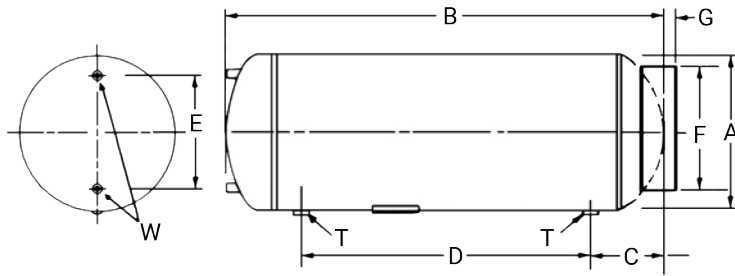
Furnish and install as shown on plans a ____ gallon (____ liter), ____" diameter x ____" long horizontal compression tank with two ½" NPT gauge glass tappings in one head and a minimum of two ____" NPT tappings (Select one: 15 thru 135 gallon [57 thru 511 liter] tanks @ 1" or 175 thru 505 gallon [662 thru 1912 liter] tanks @ 1½") in the shell. The tank must be designed, constructed and stamped for ____ psig @ 450° F (232 °C) in accordance with Section VIII, Division I of the ASME Boiler and Pressure Vessel Code, and registered with The National Board of Boiler and Pressure Vessel Inspectors.

The Compression tank(s) shall be painted with one shop coat of air dry enamel.

A Manufacturers' Data Report for Pressure Vessels, Form U-1 as required by the provisions of the ASME Boiler and Pressure Vessel Code shall be furnished for each compression tank upon request.

Each tank shall be Xylem – Bell & Gossett Model No. _____

ASME compression tanks (air control)



Dimensions and weights

Model number	Dimensions - inches (mm)							Tappings NPT inches (mm)	
	A	B	C	D	E	F	G	T	W
15	12 (305)	33 (838)	7 (178)	19 (483)	8 (203)	11.5 (292)	.88 (22)	1 (25)	0.5 (13)
24	12 (305)	51 (1,295)	7 (178)	37 (940)	8 (203)	11.5 (292)	.88 (22)	1 (25)	0.5 (13)
30	14 (356)	48 (1,219)	10 (254)	28 (711)	10 (254)	11.5 (292)	1.13 (29)	1 (25)	0.5 (13)
40	14 (356)	63 (1,600)	10 (254)	43 (1,092)	10 (254)	11.5 (292)	1.13 (29)	1 (25)	0.5 (13)
60	16 (406)	72 (1,829)	10 (254)	52 (1,321)	12 (305)	11.5 (292)	1.13 (29)	1 (25)	0.5 (13)
80	20 (508)	62 (1,575)	10 (254)	42.5 (1,080)	16 (406)	18 (457)	1.5 (38)	1 (25)	0.5 (13)
100	20 (508)	78 (1,981)	10 (254)	58 (1,473)	16 (406)	18 (457)	1.5 (38)	1 (25)	0.5 (13)
120	24 (610)	65 (1,651)	11.13 (283)	42.75 (1,086)	20 (508)	18 (457)	1.5 (38)	1 (25)	0.5 (13)
135	24 (610)	72 (1,829)	11.13 (283)	49.75 (1,264)	20 (508)	18 (457)	1.5 (38)	1 (25)	0.5 (13)
175	30 (762)	62 (1,575)	13.5 (343)	35 (889)	22 (559)	24 (610)	2 (51)	1.5 (38)	0.5 (13)
220	30 (762)	77 (1,956)	13.5 (343)	50 (1,270)	22 (559)	24 (610)	2 (51)	1.5 (38)	0.5 (13)
240	30 (762)	84 (2,134)	13.5 (343)	57 (1,448)	22 (559)	24 (610)	2 (51)	1.5 (38)	0.5 (13)
305	30 (762)	105.75 (2,686)	13.5 (343)	78.75 (2,000)	22 (559)	24 (610)	2 (51)	1.5 (38)	0.5 (13)
400	36 (914)	92.5 (2,362)	14.75 (375)	62 (1,575)	28 (711)	30 (762)	2.5 (64)	1.5 (38)	0.5 (13)
505	36 (914)	120 (3,048)	14.75 (375)	90.5 (2,299)	28 (711)	—	—	1.5 (38)	0.5 (13)

Dimensions subject to change. Not to be used for construction purposes unless certified.

Size	Approximate shipping weight lbs. (kg)	Approximate weight 100% full lbs. (kg)
15	44 (20)	169 (77)
24	62 (28)	261 (119)
30	72 (33)	321 (146)
40	92 (42)	424 (193)
60	120 (55)	618 (281)
80	136 (62)	800 (364)
100	168 (76)	998 (454)
120	218 (99)	1,214 (552)

Size	Approximate shipping weight lbs. (kg)	Approximate weight 100% full lbs. (kg)
135	238 (108)	1,359 (618)
175	338 (154)	1,791 (814)
220	368 (167)	2,194 (997)
240	394 (179)	2,386 (1085)
305	486 (221)	3,018 (1372)
400	645 (293)	3,965 (1802)
505	810 (368)	5,002 (2274)

Xylem
8200 N. Austin Avenue
Morton Grove, IL 60053

Tel +1 847.966.3700
Fax +1 847.965.8379
xylem.com/bellgossett

This information is subject to revision without notice. Users are responsible for evaluating suitability for specific applications. Xylem makes no implied warranties including without limitation warranties as to fitness for a particular purpose. Xylem makes no representation regarding the completeness or accuracy of this information and is not liable for any direct or indirect damages arising from or relating to this information or its use.

© 2025 Xylem Inc. or its affiliate. All rights reserved. Bell & Gossett is a trademark of Xylem or one of its subsidiaries.

A-3321 March 2025

xylem
Let's Solve Water