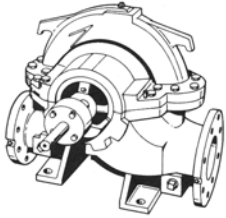


JOB:	REPRESENTATIVE:
UNIT TAG:	ORDER NO.
ENGINEER:	SUBMITTED BY:
CONTRACTOR:	APPROVED BY:
	DATE:
	DATE:
	DATE:



6X8X12XL

Series HSC-S

Base Mounted - Double Suction Centrifugal Pumps

SPECIFICATIONS

FLOW _____ HEAD _____

HP _____ RPM _____

VOLTS _____

CYCLE _____ PHASE _____

ENCLOSURE _____

APPROX. WEIGHT _____

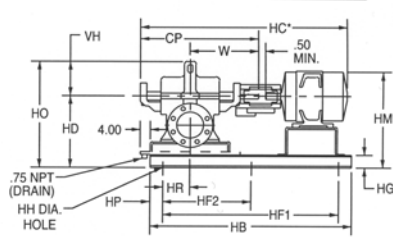
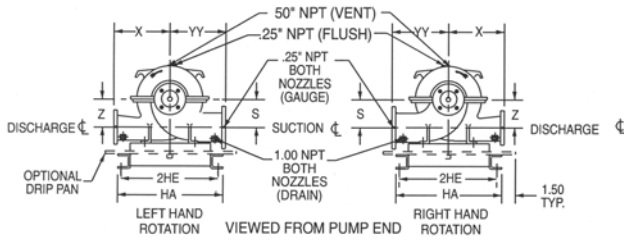
SPECIALS _____

MATERIALS OF CONSTRUCTION

- Cast Iron Bronze Fitted
- Fabricated Heavy Duty Baseplate
- ANSI/OSHA Coupling Guard
- Flexible Coupling
- Spacer Coupling (Optional)
- Galvanized Drip Pan (Optional)

TYPE OF SEAL

- STANDARD:** 175 PSIG (12 Bar) working pressure, 125# ANSI Flange Configuration
- STANDARD:** Crane Type 21, BUNA/Carbon Ceramic, 75 psig (5 Bar) maximum suction pressure, from -20° to 225°F (-29 °C to 107 °C).
- OPTIONAL:** Crane Type 21, EPR/Carbon Ceramic, 75 psig (5 Bar) maximum suction pressure, from -20° to 250°F (-29 °C to 121 °C).
- OPTIONAL:** Crane Type 21, EPR/Carbon Tungsten Carbide, 75 psig (5 Bar) maximum suction pressure, from -20° to 250°F (-29 °C to 121 °C).
- OPTIONAL:** 280 PSIG (19 Bar) working pressure, 250# ANSI Flange Configuration
- STANDARD:** Crane Type 1, BUNA/Carbon-Ceramic, 150 psig (10 Bar) maximum suction pressure, from -20° to 225°F (-29 °C to 107 °C).
- OPTIONAL:** 400 PSIG (27 Bar) working pressure, 250# ANSI Flange Configuration
- STANDARD:** Crane Type 1B, BUNA/Carbon-Ceramic, 300 psig (20 Bar) maximum suction pressure, from -20° to 225°F (-29 °C to 107 °C).
- OTHER:**



FLANGE DIMENSIONS INCHES	
Discharge	Suction
6	8

DIMENSIONS - Inches (mm)

MOTOR FRAME	HA	HB	2HE	HF ₁	HF ₂	HG	HH	HP	HR	CP	HC*	HD	HM*	HO	S & Z	VH	W	X	YY
182	21.5 (546)	48 (1219)	19.5 (495)	36 (914)	18 (457)	4 (102)	1 (25)	6 (152)	3.25 (83)	30.75 (781)	46 (1168)	21.25 (540)	27 (686)	31 (787)	9 (229)	9.6 (244)	17.5 (444)	14 (356)	14 (356)
184	21.5 (546)	48 (1219)	19.5 (495)	36 (914)	18 (457)	4 (102)	1 (25)	6 (152)	3.25 (83)	30.75 (781)	47 (1194)	21.25 (540)	27 (686)	31 (787)	9 (229)	9.6 (244)	17.5 (444)	14 (356)	14 (356)
213	21.5 (546)	48 (1219)	19.5 (495)	36 (914)	18 (457)	4 (102)	1 (25)	6 (152)	3.25 (83)	30.75 (781)	49 (1245)	21.25 (540)	27 (686)	31 (787)	9 (229)	9.6 (244)	17.5 (444)	14 (356)	14 (356)
215	21.5 (546)	48 (1219)	19.5 (495)	36 (914)	18 (457)	4 (102)	1 (25)	6 (152)	3.25 (83)	30.75 (781)	51 (1295)	21.25 (540)	27 (686)	31 (787)	9 (229)	9.6 (244)	17.5 (444)	14 (356)	14 (356)
254	21.5 (546)	54 (1372)	19.5 (495)	42 (1067)	21 (533)	4 (102)	1 (25)	6 (152)	3.25 (83)	30.75 (781)	53 (1346)	21.25 (540)	28 (711)	31 (787)	9 (229)	9.6 (244)	17.5 (444)	14 (356)	14 (356)
256	21.5 (546)	54 (1372)	19.5 (495)	42 (1067)	21 (533)	4 (102)	1 (25)	6 (152)	3.25 (83)	30.75 (781)	55 (1397)	21.25 (540)	28 (711)	31 (787)	9 (229)	9.6 (244)	17.5 (444)	14 (356)	14 (356)
284	21.5 (546)	54 (1372)	19.5 (495)	42 (1067)	21 (533)	4 (102)	1 (25)	6 (152)	3.25 (83)	30.75 (781)	56 (1422)	21.25 (540)	29 (737)	31 (787)	9 (229)	9.6 (244)	17.5 (444)	14 (356)	14 (356)
286	21.5 (546)	54 (1372)	19.5 (495)	42 (1067)	21 (533)	4 (102)	1 (25)	6 (152)	3.25 (83)	30.75 (781)	58 (1473)	21.25 (540)	29 (737)	31 (787)	9 (229)	9.6 (244)	17.5 (444)	14 (356)	14 (356)
324	21.5 (546)	54 (1372)	19.5 (495)	42 (1067)	21 (533)	4 (102)	1 (25)	6 (152)	3.25 (83)	30.75 (781)	59 (1499)	21.25 (540)	30 (762)	31 (787)	9 (229)	9.6 (244)	17.5 (444)	14 (356)	14 (356)
326	21.5 (546)	54 (1372)	19.5 (495)	42 (1067)	21 (533)	4 (102)	1 (25)	6 (152)	3.25 (83)	30.75 (781)	61 (1549)	21.25 (540)	30 (762)	31 (787)	9 (229)	9.6 (244)	17.5 (444)	14 (356)	14 (356)
364	21.5 (546)	60 (1524)	19.5 (495)	48 (1219)	24 (610)	4 (102)	1 (25)	6 (152)	3.25 (83)	30.75 (781)	63 (1600)	21.25 (540)	31 (787)	31 (787)	9 (229)	9.6 (244)	17.5 (444)	14 (356)	14 (356)
365	21.5 (546)	60 (1524)	19.5 (495)	48 (1219)	24 (610)	4 (102)	1 (25)	6 (152)	3.25 (83)	30.75 (781)	64 (1626)	21.25 (540)	31 (787)	31 (787)	9 (229)	9.6 (244)	17.5 (444)	14 (356)	14 (356)

Dimensions are subject to change. Not to be used for construction purposes unless certified.

Xylem Inc.
 8200 N. Austin Avenue
 Morton Grove, IL 60053
 Phone: (847)966-3700
 Fax: (847)965-8379
 www.xylem.com/brands/bellgossett



Bell & Gossett is a trademark of Xylem Inc. or one of its subsidiaries.
 © 2012 Xylem Inc.