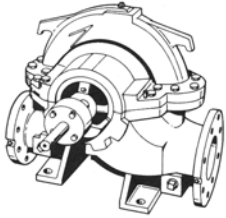


JOB:	REPRESENTATIVE:
UNIT TAG:	ORDER NO.
ENGINEER:	SUBMITTED BY:
CONTRACTOR:	APPROVED BY:
	DATE:
	DATE:
	DATE:



6x8x17L

Series HSC-S

Base Mounted - Double Suction Centrifugal Pumps

SPECIFICATIONS

FLOW _____ HEAD _____

HP _____ RPM _____

VOLTS _____

CYCLE _____ PHASE _____

ENCLOSURE _____

APPROX. WEIGHT _____

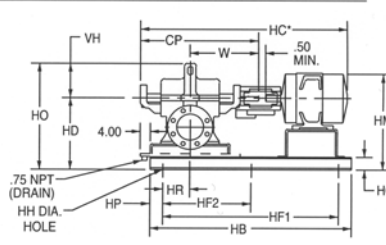
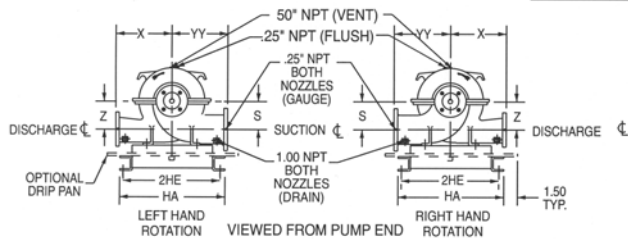
SPECIALS _____

MATERIALS OF CONSTRUCTION

- Cast Iron Bronze Fitted
- Fabricated Heavy Duty Baseplate
- ANSI/OSHA Coupling Guard
- Flexible Coupling
- Spacer Coupling (Optional)
- Galvanized Drip Pan (Optional)

TYPE OF SEAL

- STANDARD:** 175 PSIG (12 Bar) working pressure, 125# ANSI Flange Configuration
- STANDARD:** Crane Type 21, BUNA/Carbon Ceramic, 75 psig (5 Bar) maximum suction pressure, from -20° to 225°F (-29 °C to 107 °C).
- OPTIONAL:** Crane Type 21, EPR/Carbon Ceramic, 75 psig (5 Bar) maximum suction pressure, from -20° to 250°F (-29 °C to 121 °C).
- OPTIONAL:** Crane Type 21, EPR/Carbon Tungsten Carbide, 75 psig (5 Bar) maximum suction pressure, from -20° to 250°F (-29 °C to 121 °C).
- OPTIONAL:** 280 PSIG (19 Bar) working pressure, 250# ANSI Flange Configuration
- STANDARD:** Crane Type 1, BUNA/Carbon-Ceramic, 150 psig (10 Bar) maximum suction pressure, from -20° to 225°F (-29 °C to 107 °C).
- OPTIONAL:** 400 PSIG (27 Bar) working pressure, 250# ANSI Flange Configuration
- STANDARD:** Crane Type 1B, BUNA/Carbon-Ceramic, 300 psig (20 Bar) maximum suction pressure, from -20° to 225°F (-29 °C to 107 °C).
- OTHER:**



FLANGE DIMENSIONS INCHES	
Discharge	Suction
6	8

DIMENSIONS - Inches (mm)

MOTOR FRAME	HA	HB	2HE	HF ₁	HF ₂	HG	HH	HP	HR	CP	HC*	HD	HM*	HO	S & Z	VH	W	X	YY
284	24 (610)	62 (1575)	22 (559)	50 (1270)	25 (635)	4 (102)	1 (25)	6 (152)	5.63 (143)	36.87 (936)	62 (1575)	21.25 (540)	28 (711)	33 (838)	9 (229)	11.75 (298)	21.25 (540)	14 (356)	16 (406)
286	24 (610)	62 (1575)	22 (559)	50 (1270)	25 (635)	4 (102)	1 (25)	6 (152)	5.63 (143)	36.87 (936)	64 (1626)	21.25 (540)	28 (711)	33 (838)	9 (229)	11.75 (298)	21.25 (540)	14 (356)	16 (406)
324	24 (610)	62 (1575)	22 (559)	50 (1270)	25 (635)	4 (102)	1 (25)	6 (152)	5.63 (143)	36.87 (936)	66 (1676)	21.25 (540)	29 (737)	33 (838)	9 (229)	11.75 (298)	21.25 (540)	14 (356)	16 (406)
326	24 (610)	62 (1575)	22 (559)	50 (1270)	25 (635)	4 (102)	1 (25)	6 (152)	5.63 (143)	36.87 (936)	67 (1702)	21.25 (540)	29 (737)	33 (838)	9 (229)	11.75 (298)	21.25 (540)	14 (356)	16 (406)
364	24 (610)	68 (1727)	22 (559)	56 (1422)	28 (711)	4 (102)	1 (25)	6 (152)	5.63 (143)	36.87 (936)	69 (1753)	21.25 (540)	29 (737)	33 (838)	9 (229)	11.75 (298)	21.25 (540)	14 (356)	16 (406)
365	24 (610)	68 (1727)	22 (559)	56 (1422)	28 (711)	4 (102)	1 (25)	6 (152)	5.63 (143)	36.87 (936)	70 (1778)	21.25 (540)	29 (737)	33 (838)	9 (229)	11.75 (298)	21.25 (540)	14 (356)	16 (406)
404	24 (610)	68 (1727)	22 (559)	56 (1422)	28 (711)	4 (102)	1 (25)	6 (152)	5.63 (143)	36.87 (936)	74 (1880)	21.25 (540)	30 (762)	33 (838)	9 (229)	11.75 (298)	21.25 (540)	14 (356)	16 (406)
405	24 (610)	68 (1727)	22 (559)	56 (1422)	28 (711)	4 (102)	1 (25)	6 (152)	5.63 (143)	36.87 (936)	76 (1930)	21.25 (540)	30 (762)	33 (838)	9 (229)	11.75 (298)	21.25 (540)	14 (356)	16 (406)
444	24 (610)	76 (1930)	22 (559)	64 (1626)	32 (813)	6 (152)	1 (25)	6 (152)	5.63 (143)	36.87 (936)	80 (2032)	21.25 (540)	33 (838)	33 (838)	9 (229)	11.75 (298)	21.25 (540)	14 (356)	16 (406)
445	24 (610)	76 (1930)	22 (559)	64 (1626)	32 (813)	6 (152)	1 (25)	6 (152)	5.63 (143)	36.87 (936)	82 (2083)	21.25 (540)	33 (838)	33 (838)	9 (229)	11.75 (298)	21.25 (540)	14 (356)	16 (406)

Dimensions are subject to change. Not to be used for construction purposes unless certified.

Xylem Inc.
 8200 N. Austin Avenue
 Morton Grove, IL 60053
 Phone: (847)966-3700
 Fax: (847)965-8379
 www.xylem.com/brands/bellgossett

