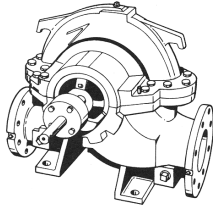


JOB:	REPRESENTATIVE:
UNIT TAG:	ORDER NO.
ENGINEER:	SUBMITTED BY:
CONTRACTOR:	APPROVED BY:
	DATE:
	DATE:
	DATE:



# 10x14x20S - Frames: 284T-365TS

## Bell & Gossett Series HSCS

### Base Mounted - Double Suction Centrifugal Pumps

**SPECIFICATIONS:**

\_\_\_\_\_GPM \_\_\_\_\_FT. \_\_\_\_\_RPM  
 MOTOR  
 DATA: \_\_\_\_\_HP \_\_\_\_\_VOLTS  
 \_\_\_\_\_ENCL. \_\_\_\_\_HZ \_\_\_\_\_PHASE  
 SPEC.CONSTR.: \_\_\_\_\_  
 APPROX.  
 WEIGHT \_\_\_\_\_LBS.

**MATERIALS OF CONSTRUCTION**

- CAST IRON BRONZE FITTED
- FABRICATED HEAVY DUTY
- OSHA COUPLING GUARD
- ALL METAL GEAR TYPE COUPLING
- GALVANIZED DRIP PAN UNDER FLANGES (OPTIONAL)

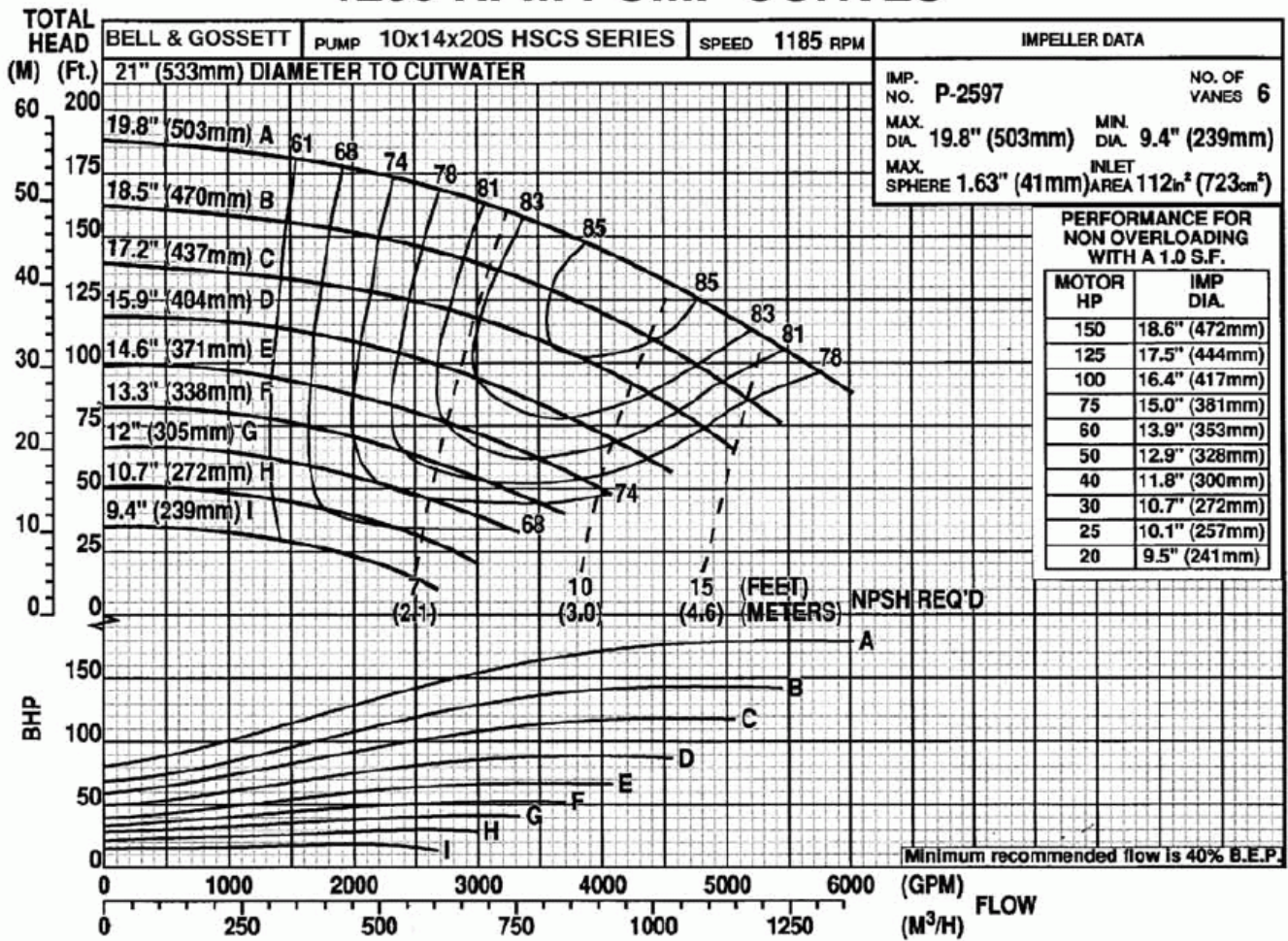
**TYPE OF SEAL**

- STANDARD:** 175 PSIG (12 Bar) working pressure, \*\*125# ANSI Flange Configuration
- OPTIONAL:** 300 PSIG (21 bar) working pressure, \*\*\*250# ANSI Flange Configuration
- STANDARD:** Crane Type 8-1, Viton/Carbon Ceramic, 75 psig (5 Bar) maximum suction pressure, from -10° to 220°F (-23 °C to 104 °C).
- OPTIONAL:** Crane Type 8-1, Viton/Carbon Tungsten Carbide, 75 psig (5 Bar) maximum suction pressure, from -10° to 220°F (-23 °C to 104 °C).
- OPTIONAL:**Crane Type 8B-1, Viton/Carbon-Ceramic, 200 PSIG (13 Bar) maximum suction pressure, from -10° to 220°F (-23 °C to 104 °C).
- OTHER:**

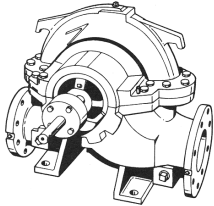
\_\_\_\_\_

\_\_\_\_\_

# 1200 RPM PUMP CURVES



JOB:	REPRESENTATIVE:
UNIT TAG:	ORDER NO.
ENGINEER:	SUBMITTED BY:
CONTRACTOR:	APPROVED BY:
	DATE:
	DATE:
	DATE:



# 10x14x20S - Frames: 284T-365TS

## Bell & Gossett Series HSCS

### Base Mounted - Double Suction Centrifugal Pumps

**SPECIFICATIONS:**

\_\_\_\_\_GPM \_\_\_\_\_FT. \_\_\_\_\_RPM  
 MOTOR  
 DATA: \_\_\_\_\_HP \_\_\_\_\_VOLTS  
 \_\_\_\_\_ENCL. \_\_\_\_\_HZ \_\_\_\_\_PHASE  
 SPEC.CONSTR.: \_\_\_\_\_  
 APPROX.  
 WEIGHT \_\_\_\_\_LBS.

**MATERIALS OF CONSTRUCTION**

- CAST IRON BRONZE FITTED
- FABRICATED HEAVY DUTY
- OSHA COUPLING GUARD
- ALL METAL GEAR TYPE COUPLING
- GALVANIZED DRIP PAN UNDER FLANGES (OPTIONAL)

**TYPE OF SEAL**

- STANDARD:** 175 PSIG (12 Bar) working pressure, \*\*125# ANSI Flange Configuration
- OPTIONAL:** 300 PSIG (21 bar) working pressure, \*\*\*250# ANSI Flange Configuration
- STANDARD:** Crane Type 8-1, Viton/Carbon Ceramic, 75 psig (5 Bar) maximum suction pressure, from -10° to 220°F (-23 °C to 104 °C).
- OPTIONAL:** Crane Type 8-1, Viton/Carbon Tungsten Carbide, 75 psig (5 Bar) maximum suction pressure, from -10° to 220°F (-23 °C to 104 °C).
- OPTIONAL:**Crane Type 8B-1, Viton/Carbon-Ceramic, 200 PSIG (13 Bar) maximum suction pressure, from -10° to 220°F (-23 °C to 104 °C).
- OTHER:**

\_\_\_\_\_

\_\_\_\_\_

TOTAL HEAD

Bell & Gossett

PUMP 10x14x20S HSCS Series

SPEED 1485 RPM

IMPELLER DATA

IMP. NO. P-2597

NO. OF VANES 6

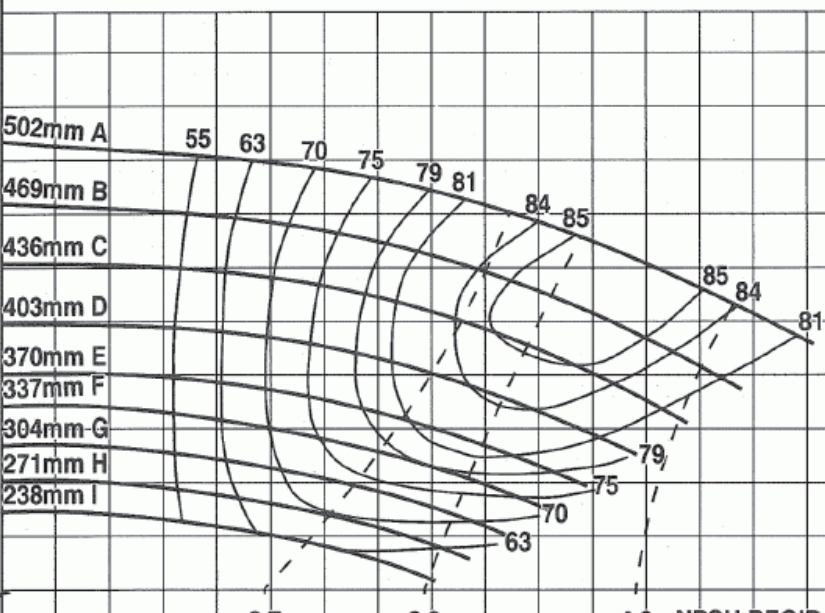
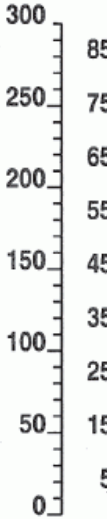
MAX. DIA. 503mm

MIN. DIA. 239mm

MAX. SPHERE 41.40mm

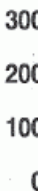
INLET AREA 723cm<sup>2</sup>

(Ft) (M)

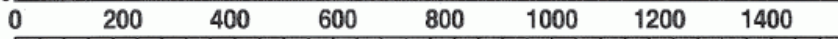


4.6 NPSH REQ'D (METERS)  
5.5 SUCTION LIFT (METERS)

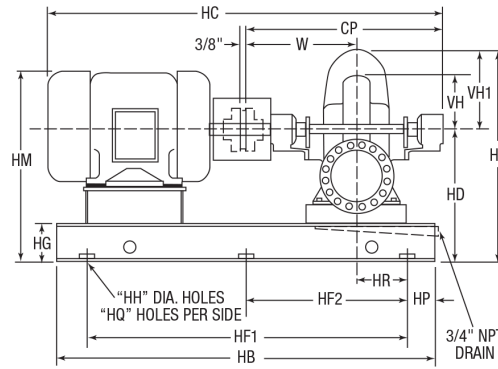
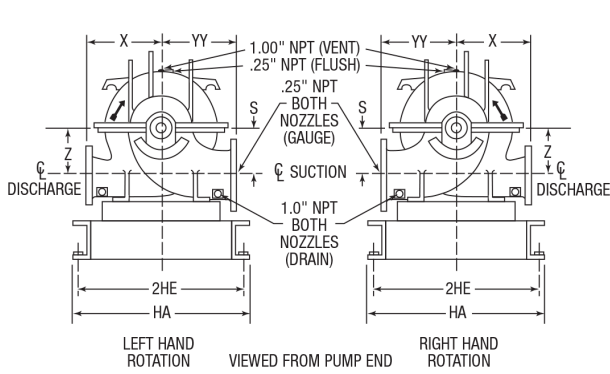
kW



Minimum recommended flow is 40% B.E.P.



**xylem**  
Let's Solve Water



FLANGE DIMENSIONS IN INCHES (MM)	
Discharge	Suction
14	10

\*\*Flange dimensions are in accordance with ANSI A21.10, AWWA C110 & ANSI B16.1 class 125.  
 \*\*\*Flange dimensions are in accordance with ANSI B16.1 class 250 except flanges are flat faced, i.e., FF.

**DIMENSIONS - Inches (mm)**

MOTOR FRAME	HA	HB	2HE	HF <sub>1</sub>	HF <sub>2</sub>	HG	HH	HP	HR	CP	HC*	HD	HM*	HO	HQ	S & Z	VH	VH <sub>1</sub>	W	X	YY
284T	27 (686)	72 (1829)	25.76 (654)	60 (1524)	30 (762)	6 (152)	.75 (19)	6 (152)	7.75 (197)	54.25 (1378)	82 (2083)	28 (711)	34 (864)	49.75 (1264)	3	13 (330)	14.75 (375)	21.75 (552)	30.5 (775)	19 (483)	21 (533)
284TS	27 (686)	72 (1829)	25.76 (654)	60 (1524)	30 (762)	6 (152)	.75 (19)	6 (152)	7.75 (197)	54.25 (1378)	79 (2007)	28 (711)	34 (864)	49.75 (1264)	3	13 (330)	14.75 (375)	21.75 (552)	30.5 (775)	19 (483)	21 (533)
286T	27 (686)	72 (1829)	25.76 (654)	60 (1524)	30 (762)	6 (152)	.75 (19)	6 (152)	7.75 (197)	54.25 (1378)	83 (2108)	28 (711)	34 (864)	49.75 (1264)	3	13 (330)	14.75 (375)	21.75 (552)	30.5 (775)	19 (483)	21 (533)
286TS	27 (686)	72 (1829)	25.76 (654)	60 (1524)	30 (762)	6 (152)	.75 (19)	6 (152)	7.75 (197)	54.25 (1378)	81 (2057)	28 (711)	34 (864)	49.75 (1264)	3	13 (330)	14.75 (375)	21.75 (552)	30.5 (775)	19 (483)	21 (533)
324T	27 (686)	72 (1829)	25.76 (654)	60 (1524)	30 (762)	6 (152)	.75 (19)	6 (152)	7.75 (197)	54.25 (1378)	84 (2134)	28 (711)	36 (914)	49.75 (1264)	3	13 (330)	14.75 (375)	21.75 (552)	30.5 (775)	19 (483)	21 (533)
324TS	27 (686)	72 (1829)	25.76 (654)	60 (1524)	30 (762)	6 (152)	.75 (19)	6 (152)	7.75 (197)	54.25 (1378)	83 (2108)	28 (711)	36 (914)	49.75 (1264)	3	13 (330)	14.75 (375)	21.75 (552)	30.5 (775)	19 (483)	21 (533)
326T	27 (686)	72 (1829)	25.76 (654)	60 (1524)	30 (762)	6 (152)	.75 (19)	6 (152)	7.75 (197)	54.25 (1378)	86 (2184)	28 (711)	36 (914)	49.75 (1264)	3	13 (330)	14.75 (375)	21.75 (552)	30.5 (775)	19 (483)	21 (533)
326TS	27 (686)	72 (1829)	25.76 (654)	60 (1524)	30 (762)	6 (152)	.75 (19)	6 (152)	7.75 (197)	54.25 (1378)	84 (2134)	28 (711)	36 (914)	49.75 (1264)	3	13 (330)	14.75 (375)	21.75 (552)	30.5 (775)	19 (483)	21 (533)
364T	27 (686)	72 (1829)	25.76 (654)	60 (1524)	30 (762)	6 (152)	.75 (19)	6 (152)	7.75 (197)	54.25 (1378)	87 (2210)	28 (711)	37 (940)	49.75 (1264)	3	13 (330)	14.75 (375)	21.75 (552)	30.5 (775)	19 (483)	21 (533)
364TS	27 (686)	72 (1829)	25.76 (654)	60 (1524)	30 (762)	6 (152)	.75 (19)	6 (152)	7.75 (197)	54.25 (1378)	85 (2159)	28 (711)	37 (940)	49.75 (1264)	3	13 (330)	14.75 (375)	21.75 (552)	30.5 (775)	19 (483)	21 (533)
365T	27 (686)	72 (1829)	25.76 (654)	60 (1524)	30 (762)	6 (152)	.75 (19)	6 (152)	7.75 (197)	54.25 (1378)	88 (2235)	28 (711)	37 (940)	49.75 (1264)	3	13 (330)	14.75 (375)	21.75 (552)	30.5 (775)	19 (483)	21 (533)
365TS	27 (686)	72 (1829)	25.76 (654)	60 (1524)	30 (762)	6 (152)	.75 (19)	6 (152)	7.75 (197)	54.25 (1378)	86 (2184)	28 (711)	37 (940)	49.75 (1264)	3	13 (330)	14.75 (375)	21.75 (552)	30.5 (775)	19 (483)	21 (533)

\*Motor dimensions are approximate, vary by manufacturer and motor type.

Dimensions are subject to change. Not to be used for construction purposes unless certified.

Xylem Inc.  
8200 N. Austin Avenue  
Morton Grove, IL 60053  
Phone: (847)966-3700  
Fax: (847)965-8379  
[www.bellgossett.com](http://www.bellgossett.com)



Bell & Gossett is a trademark of Xylem Inc. or one of its subsidiaries.  
© 2014 Xylem Inc.