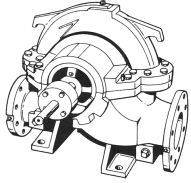


JOB: _____ REPRESENTATIVE: _____

UNIT TAG: _____ ORDER NO. _____ DATE: _____
 ENGINEER: _____ SUBMITTED BY: _____ DATE: _____
 CONTRACTOR: _____ APPROVED BY: _____ DATE: _____



10x14x20L - Frames: 5807S TEFC-6809S WPI Bell & Gossett Series HSCS Base Mounted - Double Suction Centrifugal Pumps

SPECIFICATIONS:

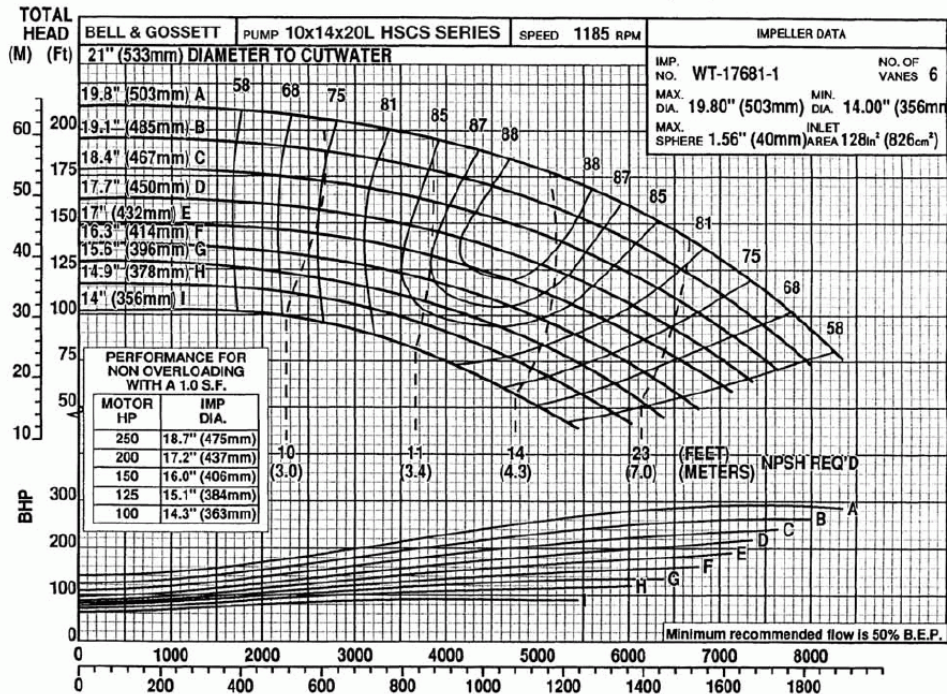
_____ GPM _____ FT. _____ RPM
 MOTOR DATA: _____ HP _____ VOLTS
 _____ ENCL. _____ HZ _____ PHASE
 SPEC. CONSTR.: _____
 APPROX. WEIGHT _____ LBS.

MATERIALS OF CONSTRUCTION

- CAST IRON BRONZE FITTED
- FABRICATED HEAVY DUTY
- OSHA COUPLING GUARD
- ALL METAL GEAR TYPE COUPLING
- GALVANIZED DRIP PAN UNDER FLANGES (OPTIONAL)

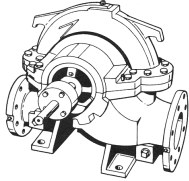
TYPE OF SEAL

- STANDARD:** 175 PSIG (12 Bar) working pressure, **125# ANSI Flange Configuration
- OPTIONAL:** 300 PSIG (21 bar) working pressure, ***250# ANSI Flange Configuration
- STANDARD:** Crane Type 8-1, Viton/Carbon Ceramic, 75 psig (5 Bar) maximum suction pressure, from -10° to 220°F (-23 °C to 104 °C).
- OPTIONAL:** Crane Type 8-1, Viton/Carbon Tungsten Carbide, 75 psig (5 Bar) maximum suction pressure, from -10° to 220°F (-23 °C to 104 °C).
- OPTIONAL:** Crane Type 8B-1, Viton/Carbon-Ceramic, 200 PSIG (13 Bar) maximum suction pressure, from -10° to 220°F (-23 °C to 104 °C).
- OTHER:** _____



JOB: _____ REPRESENTATIVE: _____

UNIT TAG: _____ ORDER NO. _____ DATE: _____
 ENGINEER: _____ SUBMITTED BY: _____ DATE: _____
 CONTRACTOR: _____ APPROVED BY: _____ DATE: _____



10X14X20L - Frames: 5807S TEFC-6809S WPI

Bell & Gossett Series HSCS

Base Mounted - Double Suction Centrifugal Pumps

SPECIFICATIONS:

_____ GPM _____ FT. _____ RPM
 MOTOR _____
 DATA: _____ HP _____ VOLTS
 _____ ENCL. _____ HZ _____ PHASE
 SPEC.CONSTR.: _____
 APPROX. _____
 WEIGHT _____ LBS.

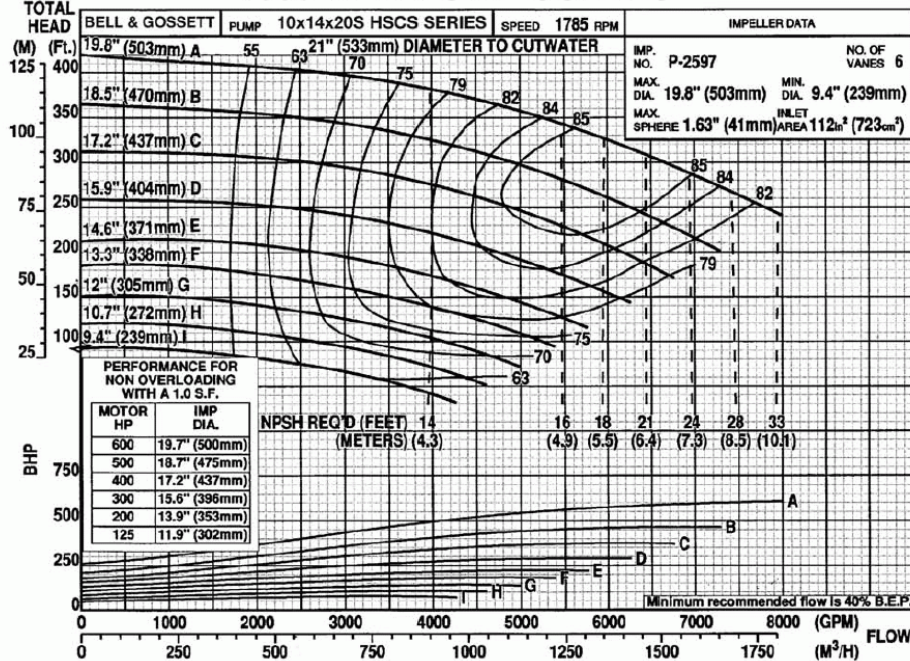
MATERIALS OF CONSTRUCTION

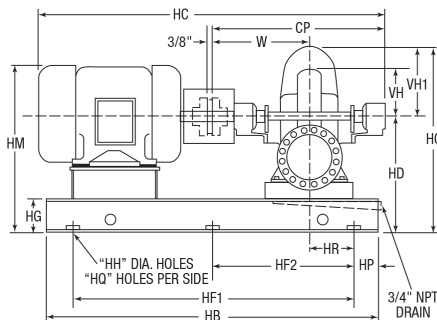
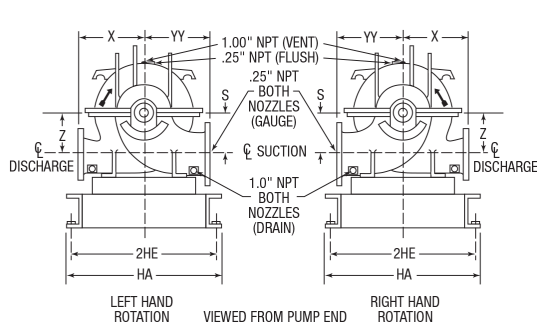
- CAST IRON BRONZE FITTED
- FABRICATED HEAVY DUTY
- OSHA COUPLING GUARD
- ALL METAL GEAR TYPE COUPLING
- GALVANIZED DRIP PAN UNDER FLANGES (OPTIONAL)

TYPE OF SEAL

- STANDARD:** 175 PSIG (12 Bar) working pressure, **125# ANSI Flange Configuration
- OPTIONAL:** 300 PSIG (21 bar) working pressure, ***250# ANSI Flange Configuration
- STANDARD:** Crane Type 8-1, Viton/Carbon Ceramic, 75 psig (5 Bar) maximum suction pressure, from -10° to 220°F (-23 °C to 104 °C).
- OPTIONAL:** Crane Type 8-1, Viton/Carbon Tungsten Carbide, 75 psig (5 Bar) maximum suction pressure, from -10° to 220°F (-23 °C to 104 °C).
- OPTIONAL:** Crane Type 8B-1, Viton/Carbon-Ceramic, 200 PSIG (13 Bar) maximum suction pressure, from -10° to 220°F (-23 °C to 104 °C).
- OTHER:** _____

1800 RPM PUMP CURVES





FLANGE DIMENSIONS IN INCHES (MM)	
Discharge	Suction
14	10

**Flange dimensions are in accordance with ANSI A21.10, AWWA C110 & ANSI B16.1 class 125.
 ***Flange dimensions are in accordance with ANSI B16.1 class 250 except flanges are flat faced, i.e., F.F.

DIMENSIONS - Inches (mm)

MOTOR FRAME	HA	HB	2HE	HF ₁	HF ₂	HG	HH	HP	HR	CP	HC*	HD	HM*	HO	HQ	S & Z	VH	VH ₁	W	X	YY
5807S TEFC	32 (813)	93 (2362)	30 (762)	81 (2057)	27 (686)	8 (203)	.88 (22)	6 (152)	7.75 (197)	54.25 (1378)	113 (2870)	32 (813)	48 (1219)	53.75 (1365)	4	13 (330)	14.75 (375)	21.75 (552)	30.5 (775)	19 (483)	21 (533)
5809S TEFC	32 (813)	108 (2743)	30 (762)	96 (2438)	32 (813)	8 (203)	.88 (22)	6 (152)	7.75 (197)	54.25 (1378)	120 (3048)	32 (813)	48 (1219)	53.75 (1365)	4	13 (330)	14.75 (375)	21.75 (552)	30.5 (775)	19 (483)	21 (533)
5811S TEFC	32 (813)	108 (2743)	30 (762)	96 (2438)	32 (813)	8 (203)	.88 (22)	6 (152)	7.75 (197)	54.25 (1378)	128 (3251)	32 (813)	46 (1168)	53.75 (1365)	4	13 (330)	14.75 (375)	21.75 (552)	30.5 (775)	19 (483)	21 (533)
5007S WPI	32 (813)	93 (2362)	30 (762)	81 (2057)	27 (686)	8 (203)	.88 (22)	6 (152)	7.75 (197)	54.25 (1378)	100 (2540)	32 (813)	45 (1143)	53.75 (1365)	4	13 (330)	14.75 (375)	21.75 (552)	30.5 (775)	19 (483)	21 (533)
5009S WPI	32 (813)	93 (2362)	30 (762)	81 (2057)	27 (686)	8 (203)	.88 (22)	6 (152)	7.75 (197)	54.25 (1378)	105 (2667)	32 (813)	45 (1143)	53.75 (1365)	4	13 (330)	14.75 (375)	21.75 (552)	30.5 (775)	19 (483)	21 (533)
5010S WPI	32 (813)	108 (2743)	30 (762)	96 (2438)	32 (813)	8 (203)	.88 (22)	6 (152)	7.75 (197)	54.25 (1378)	109 (2769)	32 (813)	45 (1143)	53.75 (1365)	4	13 (330)	14.75 (375)	21.75 (552)	30.5 (775)	19 (483)	21 (533)
5807S WPI	32 (813)	93 (2362)	30 (762)	81 (2057)	27 (686)	8 (203)	.88 (22)	6 (152)	7.75 (197)	54.25 (1378)	106 (2692)	32 (813)	45 (1143)	53.75 (1365)	4	13 (330)	14.75 (375)	21.75 (552)	30.5 (775)	19 (483)	21 (533)
5809S WPI	32 (813)	108 (2743)	30 (762)	96 (2438)	32 (813)	8 (203)	.88 (22)	6 (152)	7.75 (197)	54.25 (1378)	113 (2870)	32 (813)	45 (1143)	53.75 (1365)	4	13 (330)	14.75 (375)	21.75 (552)	30.5 (775)	19 (483)	21 (533)
5810MS WPI	32 (813)	108 (2743)	30 (762)	96 (2438)	32 (813)	8 (203)	.88 (22)	6 (152)	7.75 (197)	54.25 (1378)	118 (2997)	32 (813)	45 (1143)	53.75 (1365)	4	13 (330)	14.75 (375)	21.75 (552)	30.5 (775)	19 (483)	21 (533)
5811MS WPI	32 (813)	108 (2743)	30 (762)	96 (2438)	32 (813)	8 (203)	.88 (22)	6 (152)	7.75 (197)	54.25 (1378)	122 (3099)	32 (813)	47 (1194)	53.75 (1365)	4	13 (330)	14.75 (375)	21.75 (552)	30.5 (775)	19 (483)	21 (533)
6809S WPI	35 (889)	118 (2997)	33 (838)	106 (2692)	26.5 (673)	10 (254)	1.12 (28)	6 (152)	7.75 (197)	54.25 (1378)	125 (3175)	34 (864)	51 (1295)	55.75 (1416)	5	13 (330)	14.75 (375)	21.75 (552)	30.5 (775)	19 (483)	21 (533)

*Motor dimensions are approximate, vary by manufacturer and motor type.

Dimensions are subject to change. Not to be used for construction purposes unless certified.

Xylem Inc.
 8200 N. Austin Avenue
 Morton Grove, IL 60053
 Phone: (847)966-3700
 Fax: (847)965-8379
 www.bellgossett.com

