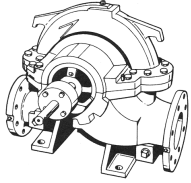


JOB:	REPRESENTATIVE:	
UNIT TAG:	ORDER NO.:	DATE:
ENGINEER:	SUBMITTED BY:	DATE:
CONTRACTOR:	APPROVED BY:	DATE:



8x12x22L Frames: 284T-365TS

Bell & Gossett Series HSCS

Base Mounted - Double Suction Centrifugal Pumps

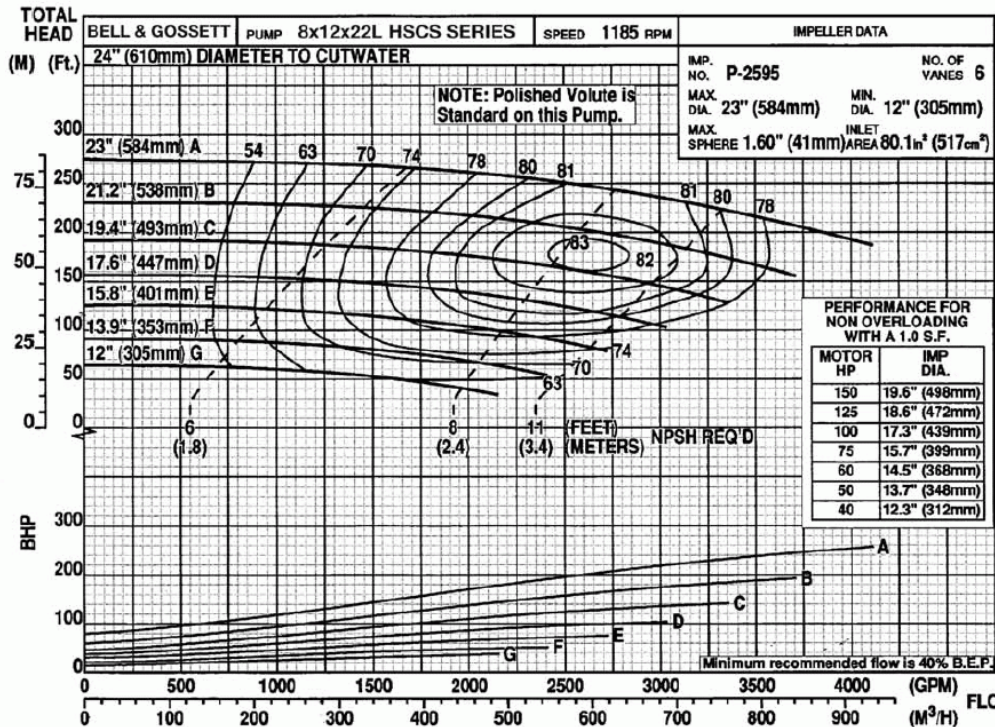
SPECIFICATIONS:

FLOW _____ HEAD _____
 HP _____ RPM _____
 VOLTS _____
 CYCLE _____ PHASE _____
 ENCLOSURE _____
 APPROX. WEIGHT _____
 SPECIALS _____

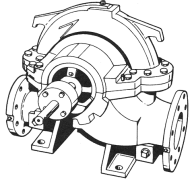
- STANDARD:** 300 PSIG (21 Bar) working pressure, **125/**250# ANSI Flanges
- OPTIONAL:** 400 PSIG (27 Bar) working pressure, ***250# ANSI Flanges
- STANDARD:** Crane Type 8 - 1, Viton/Carbon-Ceramic, 75 psig (5 Bar) maximum suction pressure, from -10° to 220° F (-23 to 104 ° C).
- OPTIONAL:** Crane Type 8 - 1, Viton/Carbon-Tungsten Carbide, 75 psig (5 Bar) maximum suction pressure, from -10° to 220° F (-23 to 104 ° C).
- OPTIONAL:** Crane Type 8B - 1, Viton/Carbon-Ceramic, 200 psig (13 Bar) maximum suction pressure, from -10° to 220° F (-23 to 104 ° C).
- OTHER:** _____

MATERIALS OF CONSTRUCTION

- CAST IRON BRONZE FITTED
- FABRICATED HEAVY DUTY
- ANSI/OSHA COUPLING GUARD
- FLEXIBLE COUPLING
- SPACER COUPLING (OPTIONAL)
- GALVANIZED DRIP PAN OPTIONAL



JOB:	REPRESENTATIVE:	
UNIT TAG:	ORDER NO.:	DATE:
ENGINEER:	SUBMITTED BY:	DATE:
CONTRACTOR:	APPROVED BY:	DATE:



8x12x22L Frames: 284T-365TS

Bell & Gossett Series HSCS

Base Mounted - Double Suction Centrifugal Pumps

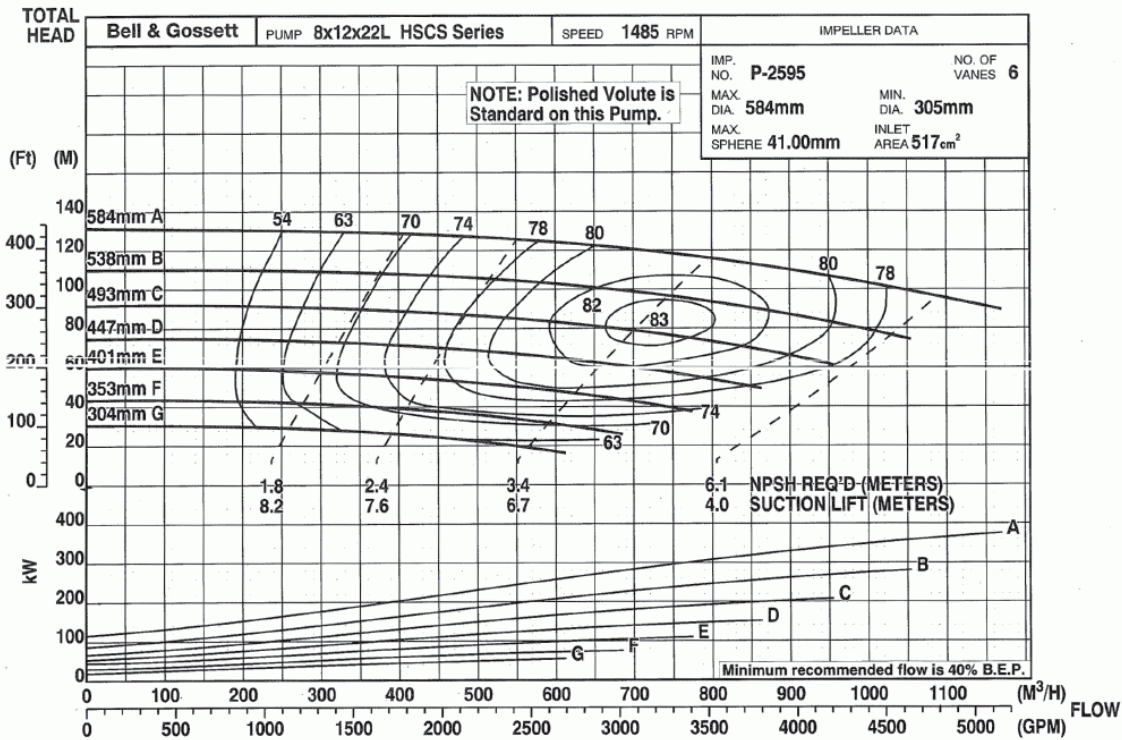
SPECIFICATIONS:

FLOW _____ HEAD _____
 HP _____ RPM _____
 VOLTS _____
 CYCLE _____ PHASE _____
 ENCLOSURE _____
 APPROX. WEIGHT _____
 SPECIALS _____

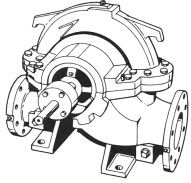
- STANDARD:** 300 PSIG (21 Bar) working pressure, **125/**250# ANSI Flanges
- OPTIONAL:** 400 PSIG (27 Bar) working pressure, ***250# ANSI Flanges
- STANDARD:** Crane Type 8 - 1, Viton/Carbon-Ceramic, 75 psig (5 Bar) maximum suction pressure, from -10° to 220° F (-23 to 104 ° C).
- OPTIONAL:** Crane Type 8 - 1, Viton/Carbon-Tungsten Carbide, 75 psig (5 Bar) maximum suction pressure, from -10° to 220° F (-23 to 104 ° C).
- OPTIONAL:** Crane Type 8B - 1, Viton/Carbon-Ceramic, 200 psig (13 Bar) maximum suction pressure, from -10° to 220° F (-23 to 104 ° C).
- OTHER:** _____

MATERIALS OF CONSTRUCTION

- CAST IRON BRONZE FITTED
- FABRICATED HEAVY DUTY
- ANSI/OSHA COUPLING GUARD
- FLEXIBLE COUPLING
- SPACER COUPLING (OPTIONAL)
- GALVANIZED DRIP PAN (OPTIONAL)



JOB:	REPRESENTATIVE:	
UNIT TAG:	ORDER NO.:	DATE:
ENGINEER:	SUBMITTED BY:	DATE:
CONTRACTOR:	APPROVED BY:	DATE:



8x12x22L Frames: 284T-365TS

Bell & Gossett Series HSCS

Base Mounted - Double Suction Centrifugal Pumps

SPECIFICATIONS:

FLOW _____ HEAD _____

HP _____ RPM _____

VOLTS _____

CYCLE _____ PHASE _____

ENCLOSURE _____

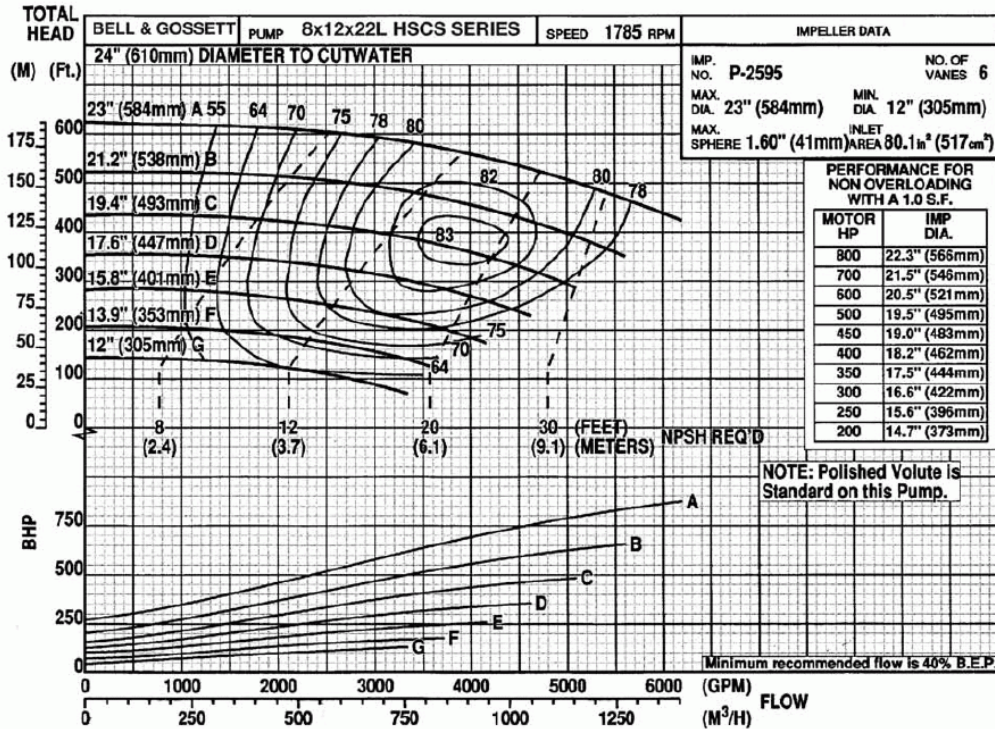
APPROX. WEIGHT _____

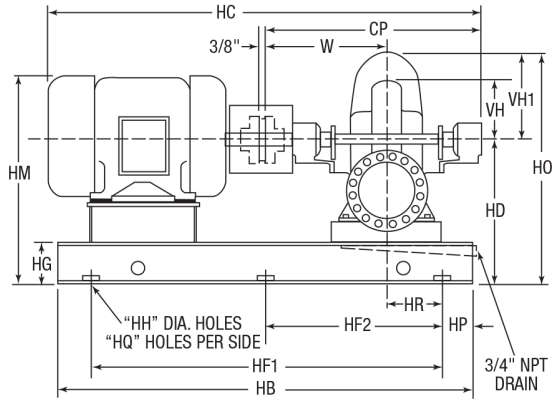
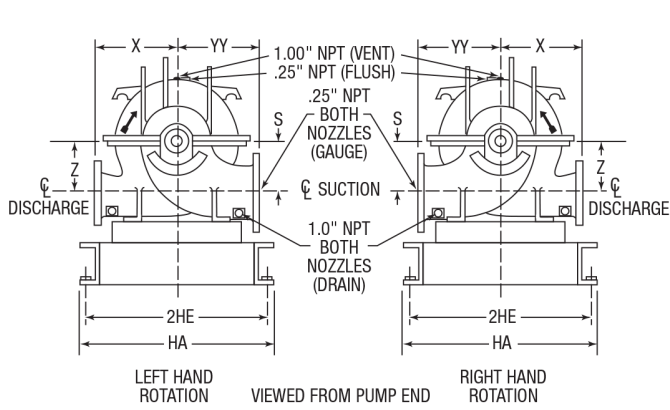
SPECIALS _____

- STANDARD:** 300 PSIG (21 Bar) working pressure, **125/**250# ANSI Flanges
- OPTIONAL:** 400 PSIG (27 Bar) working pressure, ***250# ANSI Flanges
- STANDARD:** Crane Type 8 - 1, Viton/Carbon-Ceramic, 75 psig (5 Bar) maximum suction pressure, from -10° to 220° F (-23 to 104 ° C).
- OPTIONAL:** Crane Type 8 - 1, Viton/Carbon-Tungsten Carbide, 75 psig (5 Bar) maximum suction pressure, from -10° to 220° F (-23 to 104 ° C).
- OPTIONAL:** Crane Type 8B - 1, Viton/Carbon-Ceramic, 200 psig (13 Bar) maximum suction pressure, from -10° to 220° F (-23 to 104 ° C).
- OTHER:** _____

MATERIALS OF CONSTRUCTION

- CAST IRON BRONZE FITTED
- FABRICATED HEAVY DUTY
- ANSI/OSHA COUPLING GUARD
- FLEXIBLE COUPLING
- SPACER COUPLING (OPTIONAL)
- GALVANIZED DRIP PAN (OPTIONAL)





FLANGE DIMENSIONS IN INCHES (MM)	
Discharge	Suction
12	8

**Flange dimensions are in accordance with ANSI A21.10, AWWA C110 & ANSI B16.1 class 125.
 ***Flange dimensions are in accordance with ANSI B16.1 class 250 except flanges are flat faced, i.e., FF.

DIMENSIONS - Inches (mm)

MOTOR FRAME	HA	HB	2HE	HF ₁	HF ₂	HG	HH	HP	HR	CP	HC*	HD	HM*	HO	HQ	S & Z	VH	VH ₁	W	X	YY
284T	27 (686)	72 (1829)	25.76 (654)	60 (1524)	30 (762)	6 (152)	.75 (19)	6 (152)	10 (254)	49.5 (1257)	78 (1981)	26 (660)	32 (813)	45.88 (1165)	3	12 (305)	15.25 (387)	19.88 (505)	28.25 (718)	21 (533)	21 (533)
284TS	27 (686)	72 (1829)	25.76 (654)	60 (1524)	30 (762)	6 (152)	.75 (19)	6 (152)	10 (254)	49.50 (1257)	75 (1905)	26 (660)	32 (813)	45.88 (1165)	3	12 (305)	15.25 (387)	19.88 (505)	28.25 (718)	21 (533)	21 (533)
286T	27 (686)	72 (1829)	25.76 (654)	60 (1524)	30 (762)	6 (152)	.75 (19)	6 (152)	10 (254)	49.50 (1257)	78 (1981)	26 (660)	32 (813)	45.88 (1165)	3	12 (305)	15.25 (387)	19.88 (505)	28.25 (718)	21 (533)	21 (533)
286TS	27 (686)	72 (1829)	25.76 (654)	60 (1524)	30 (762)	6 (152)	.75 (19)	6 (152)	10 (254)	49.5 (1257)	76 (1930)	26 (660)	32 (813)	45.88 (1165)	3	12 (305)	15.25 (387)	19.88 (505)	28.25 (718)	21 (533)	21 (533)
324T	27 (686)	72 (1829)	25.76 (654)	60 (1524)	30 (762)	6 (152)	.75 (19)	6 (152)	10 (254)	49.50 (1257)	80 (2032)	26 (660)	34 (864)	45.88 (1165)	3	12 (305)	15.25 (387)	19.88 (505)	28.25 (718)	21 (533)	21 (533)
324TS	27 (686)	72 (1829)	25.76 (654)	60 (1524)	30 (762)	6 (152)	.75 (19)	6 (152)	10 (254)	49.50 (1257)	78 (1981)	26 (660)	34 (864)	45.88 (1165)	3	12 (305)	15.25 (387)	19.88 (505)	28.25 (718)	21 (533)	21 (533)
326T	27 (686)	72 (1829)	25.76 (654)	60 (1524)	30 (762)	6 (152)	.75 (19)	6 (152)	10 (254)	49.50 (1257)	81 (2057)	26 (660)	34 (864)	45.88 (1165)	3	12 (305)	15.25 (387)	19.88 (505)	28.25 (718)	21 (533)	21 (533)
326TS	27 (686)	72 (1829)	25.76 (654)	60 (1524)	30 (762)	6 (152)	.75 (19)	6 (152)	10 (254)	49.50 (1257)	80 (2032)	26 (660)	34 (864)	45.88 (1165)	3	12 (305)	15.25 (387)	19.88 (505)	28.25 (718)	21 (533)	21 (533)
364T	27 (686)	72 (1829)	25.76 (654)	60 (1524)	30 (762)	6 (152)	.75 (19)	6 (152)	10 (254)	49.5 (1257)	82 (2083)	26 (660)	35 (889)	45.88 (1165)	3	12 (305)	15.25 (387)	19.88 (505)	28.25 (718)	21 (533)	21 (533)
364TS	27 (686)	72 (1829)	25.76 (654)	60 (1524)	30 (762)	6 (152)	.75 (19)	6 (152)	10 (254)	49.50 (1257)	80 (2032)	26 (660)	35 (889)	45.88 (1165)	3	12 (305)	15.25 (387)	19.88 (505)	28.25 (718)	21 (533)	21 (533)
365T	27 (686)	72 (1829)	25.76 (654)	60 (1524)	30 (762)	6 (152)	.75 (19)	6 (152)	10 (254)	49.5 (1257)	83 (2108)	26 (660)	35 (889)	45.88 (1165)	3	12 (305)	15.25 (387)	19.88 (505)	28.25 (718)	21 (533)	21 (533)
365TS	27 (686)	72 (1829)	25.76 (654)	60 (1524)	30 (762)	6 (152)	.75 (19)	6 (152)	10 (254)	49.50 (1257)	81 (2057)	26 (660)	35 (889)	45.88 (1165)	3	12 (305)	15.25 (387)	19.88 (505)	28.25 (718)	21 (533)	21 (533)

*Motor dimensions are approximate, vary by manufacturer and motor type.
 Dimensions are subject to change. Not to be used for construction purposes unless certified.

Xylem Inc.
 8200 N. Austin Avenue
 Morton Grove, IL 60053
 Phone: (847)966-3700
 Fax: (847)965-8379
 www.bellgossett.com

