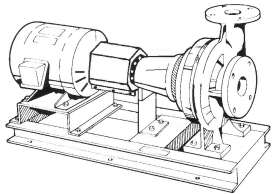




JOB:	REPRESENTATIVE:	
UNIT TAG:	ORDER NO.	DATE:
ENGINEER:	SUBMITTED BY:	DATE:
CONTRACTOR:	APPROVED BY:	DATE:



3BD Series e-1510 Centrifugal Pumps - Base Mounted

SPECIFICATIONS

FLOW _____ HEAD _____
 HP _____ RPM _____
 VOLTS _____
 CYCLE _____ PHASE _____
 ENCLOSURE _____
 APPROX. WEIGHT _____
 SPECIALS _____

MATERIALS OF CONSTRUCTION

Stainless Steel Fitted

FEATURES

- ANSI/OSHA Coupling Guard
- Center Drop Out Spacer Coupling
- Fabricated Heavy Duty Baseplate

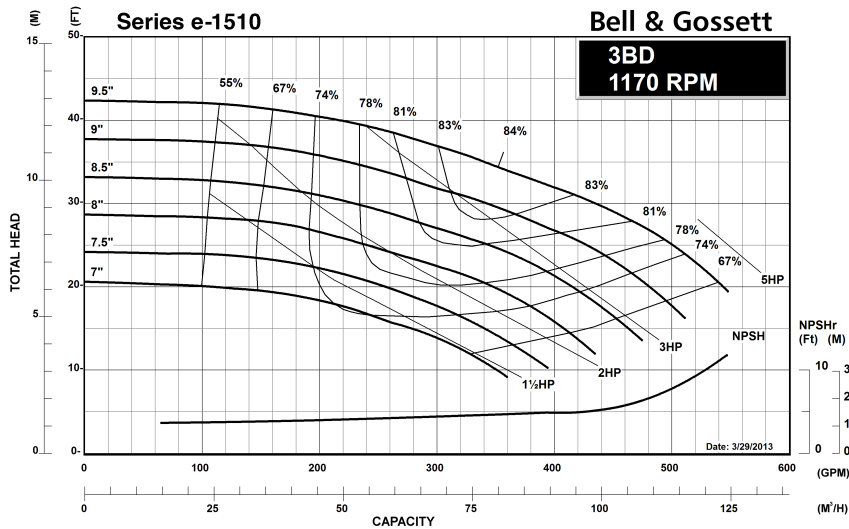
MAXIMUM WORKING PRESSURE

175 psi (12 bar) W.P.
w/ 125# ANSI flange drilling

TYPE OF SEAL

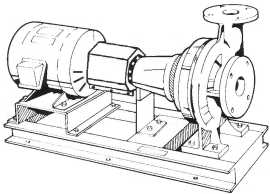
- Standard Seal (Buna-Carbon/Ceramic)
- F Standard Seal w/ Flush Line (Buna-Carbon/Ceramic)
- S Stuffing Box Construction w/ Flushed Mechanical Single Seal (EPR-Tungsten Carbide/Carbon)
- PF Stuffing Box Construction w/ Packing (Graphite Impregnated Teflon)

Note: Equipped with NEOPRENE coupling





JOB:	REPRESENTATIVE:	
UNIT TAG:	ORDER NO.	DATE:
ENGINEER:	SUBMITTED BY:	DATE:
CONTRACTOR:	APPROVED BY:	DATE:



3BD Series e-1510 Centrifugal Pumps - Base Mounted

SPECIFICATIONS

FLOW _____ HEAD _____
 HP _____ RPM _____
 VOLTS _____
 CYCLE _____ PHASE _____
 ENCLOSURE _____
 APPROX. WEIGHT _____
 SPECIALS _____

MATERIALS OF CONSTRUCTION

Stainless Steel Fitted

FEATURES

- ANSI/OSHA Coupling Guard
- Center Drop Out Spacer Coupling
- Fabricated Heavy Duty Baseplate

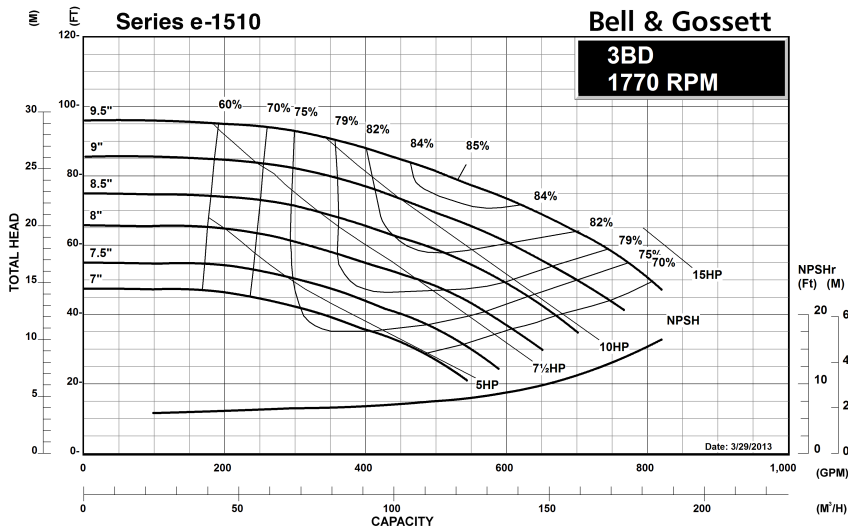
MAXIMUM WORKING PRESSURE

175 psi (12 bar) W.P.
w/ 125# ANSI flange drilling

TYPE OF SEAL

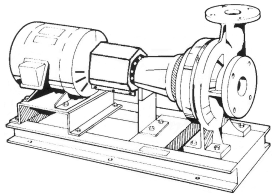
- Standard Seal (Buna-Carbon/Ceramic)
- F Standard Seal w/ Flush Line (Buna-Carbon/Ceramic)
- S Stuffing Box Construction w/ Flushed Mechanical Single Seal (EPR-Tungsten Carbide/Carbon)
- PF Stuffing Box Construction w/ Packing (Graphite Impregnated Teflon)

Note: Equipped with NEOPRENE coupling





JOB:	REPRESENTATIVE:	
UNIT TAG:	ORDER NO.	DATE:
ENGINEER:	SUBMITTED BY:	DATE:
CONTRACTOR:	APPROVED BY:	DATE:



3BD

Series e-1510

Centrifugal Pumps - Base Mounted

SPECIFICATIONS

FLOW _____ HEAD _____
 HP _____ RPM _____
 VOLTS _____
 CYCLE _____ PHASE _____
 ENCLOSURE _____
 APPROX. WEIGHT _____
 SPECIALS _____

MATERIALS OF CONSTRUCTION

Stainless Steel Fitted

FEATURES

- ANSI/OSHA Coupling Guard
- Center Drop Out Spacer Coupling
- Fabricated Heavy Duty Baseplate

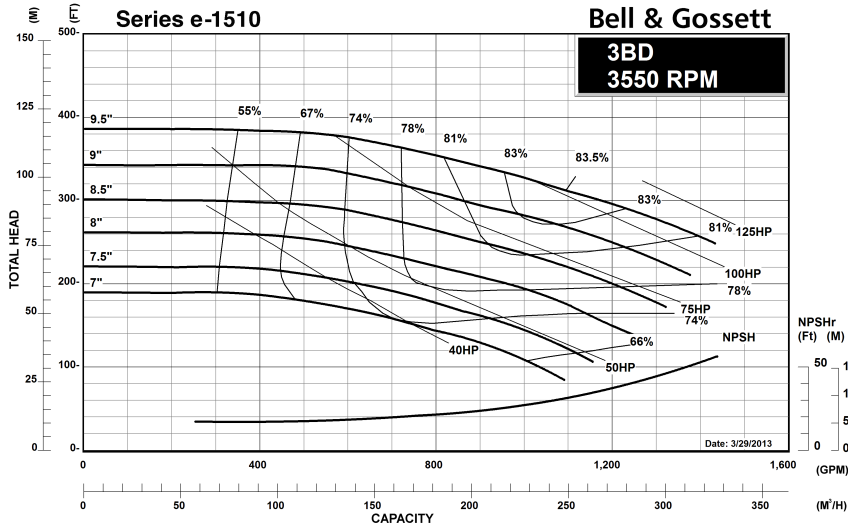
MAXIMUM WORKING PRESSURE

175 psi (12 bar) W.P.
w/ 125# ANSI flange drilling

TYPE OF SEAL

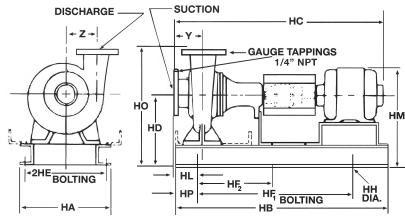
- Standard Seal (Buna-Carbon/Ceramic)
- F Standard Seal w/ Flush Line (Buna-Carbon/Ceramic)
- S Stuffing Box Construction w/ Flushed Mechanical Single Seal (EPR-Tungsten Carbide/Carbon)
- PF Stuffing Box Construction w/ Packing (Graphite Impregnated Teflon)

Note: Equipped with NEOPRENE coupling



Series e-1510 3BD Centrifugal Pump Submittal

B-880.22C



FLANGE DIMENSIONS IN INCHES (MM)			
	SIZE	THICKNESS	O.D.
Discharge	3"	3/4" (25)	7-1/2" (191)
Suction	4"	15/16" (24)	9" (229)

FLANGES ARE 125# ANSI - STANDARD

DIMENSIONS – Inches (mm)

STANDARD SEAL

MOTOR FRAME	HA	HB	HC MAX	HD	2HE	HF ₁	HF ₂	HH	HL	HM MAX	HO	HP	Y	Z
"S" FRAME														
182T	14-5/8 (371)	31 (787)	34-7/8 (886)	10-3/4 (273)	12-7/8 (327)	25 (635)	-	3/4 (19)	3-11/16 (94)	16 (406)	18-1/4 (464)	3 (76)	4-3/4 (121)	6-1/8 (156)
184T	14-5/8 (371)	31 (787)	34-7/8 (886)	10-3/4 (273)	12-7/8 (327)	25 (635)	-	3/4 (19)	3-11/16 (94)	16 (406)	18-1/4 (464)	3 (76)	4-3/4 (121)	6-1/8 (156)
213T	14-5/8 (371)	34-5/8 (879)	37-1/2 (953)	10-3/4 (273)	12-7/8 (327)	28-5/8 (727)	-	3/4 (19)	3-11/16 (94)	16-5/8 (422)	18-1/4 (464)	3 (76)	4-3/4 (121)	6-1/8 (156)
215T	14-5/8 (371)	34-5/8 (879)	39 (991)	10-3/4 (273)	12-7/8 (327)	28-5/8 (727)	-	3/4 (19)	3-11/16 (94)	16-5/8 (422)	18-1/4 (464)	3 (76)	4-3/4 (121)	6-1/8 (156)
254T	14-5/8 (371)	39-3/8 (1000)	42-3/4 (1086)	10-3/4 (273)	12-7/8 (327)	33-3/8 (848)	-	3/4 (19)	3-11/16 (94)	17-5/8 (448)	18-1/4 (464)	3 (76)	4-3/4 (121)	6-1/8 (156)
"L" FRAME														
284TS	16 (406)	46-1/2 (1181)	48-1/8 (1222)	13 (330)	14 (356)	36-1/2 (927)	18-1/4 (464)	7/8 (22)	4-13/16 (122)	21 (533)	20-1/2 (521)	5 (127)	4-3/4 (121)	6-1/8 (156)
286TS	16 (406)	46-1/2 (1181)	49-5/8 (1260)	13 (330)	14 (356)	36-1/2 (927)	18-1/4 (464)	7/8 (22)	4-13/16 (122)	21 (533)	20-1/2 (521)	5 (127)	4-3/4 (121)	6-1/8 (156)
324TS	16 (406)	46-1/2 (1181)	51-1/2 (1308)	12 (305)	14 (356)	36-1/2 (927)	18-1/4 (464)	7/8 (22)	4-13/16 (122)	21 (533)	19-1/2 (495)	5 (127)	4-3/4 (121)	6-1/8 (156)
326TS	16 (406)	46-1/2 (1181)	53 (1346)	12 (305)	14 (356)	36-1/2 (927)	18-1/4 (464)	7/8 (22)	4-13/16 (122)	21 (533)	19-1/2 (495)	5 (127)	4-3/4 (121)	6-1/8 (156)
364TS	16 (406)	51-3/4 (1314)	53-1/2 (1359)	13-1/4 (337)	14 (356)	41-3/4 (1060)	20-7/8 (530)	7/8 (22)	4-13/16 (122)	22-1/2 (572)	20-3/4 (527)	5 (127)	4-3/4 (121)	6-1/8 (156)
365TS	16 (406)	51-3/4 (1314)	55 (1397)	13-1/4 (337)	14 (356)	41-3/4 (1060)	20-7/8 (530)	7/8 (22)	4-13/16 (122)	22-1/2 (572)	20-3/4 (527)	5 (127)	4-3/4 (121)	6-1/8 (156)

STUFFING BOX

MOTOR FRAME	HA	HB	HC MAX	HD	2HE	HF ₁	HF ₂	HH	HL	HM MAX	HO	HP	Y	Z
"S" FRAME														
182T	14-5/8 (371)	34-5/8 (879)	34-3/4 (959)	10-3/4 (273)	12-7/8 (327)	28-5/8 (727)	-	3/4 (19)	3-11/16 (93)	16 (406)	18-1/4 (464)	3 (76)	4-3/4 (121)	6-1/8 (156)
184T	14-5/8 (371)	34-5/8 (879)	38-1/2 (978)	10-3/4 (273)	12-7/8 (327)	28-5/8 (727)	-	3/4 (19)	3-11/16 (93)	16 (406)	18-1/4 (464)	3 (76)	4-3/4 (121)	6-1/8 (156)
213T	14-5/8 (371)	39-3/8 (1000)	41 (1041)	10-3/4 (273)	12-7/8 (327)	33-3/8 (848)	-	3/4 (19)	3-11/16 (93)	16-5/8 (422)	18-1/4 (464)	3 (76)	4-3/4 (121)	6-1/8 (156)
215T	14-5/8 (371)	39-3/8 (1000)	42-1/2 (1080)	10-3/4 (273)	12-7/8 (327)	33-3/8 (848)	-	3/4 (19)	3-11/16 (93)	16-5/8 (422)	18-1/4 (464)	3 (76)	4-3/4 (121)	6-1/8 (156)
254T	16 (406)	46-1/2 (1181)	46-1/4 (1175)	12 (305)	14 (356)	36-1/2 (927)	18-1/4 (464)	7/8 (22)	4-13/16 (122)	18-7/8 (479)	19-1/2 (495)	5 (127)	4-3/4 (121)	6-1/8 (156)
"L" FRAME														
284TS	16 (406)	51-3/4 (1314)	50-1/2 (1283)	13 (330)	14 (356)	41-3/4 (1060)	20-7/8 (530)	7/8 (22)	4-13/16 (122)	21 (533)	20-1/2 (521)	5 (127)	4-3/4 (121)	6-1/8 (156)
286TS	16 (406)	51-3/4 (1314)	52 (1321)	13 (330)	14 (356)	41-3/4 (1060)	20-7/8 (530)	7/8 (22)	4-13/16 (122)	21 (533)	20-1/2 (521)	5 (127)	4-3/4 (121)	6-1/8 (156)
324TS	16 (406)	51-3/4 (1314)	54 (1372)	12 (305)	14 (356)	41-3/4 (1060)	20-7/8 (530)	7/8 (22)	4-13/16 (122)	21 (533)	19-1/2 (495)	5 (127)	4-3/4 (121)	6-1/8 (156)
326TS	16 (406)	51-3/4 (1314)	55-1/2 (1410)	12 (305)	14 (356)	41-3/4 (1060)	20-7/8 (530)	7/8 (22)	4-13/16 (122)	21 (533)	19-1/2 (495)	5 (127)	4-3/4 (121)	6-1/8 (156)

Dimensions are subject to change. Not to be used for construction purposes unless certified.



Xylem Inc.
 8200 N. Austin Avenue, Morton Grove, IL 60053
 Phone: (847)966-3700 Fax: (847)965-8379
 www.bellgossett.com
 Bell & Gossett is a trademark of Xylem Inc. or one of its subsidiaries.
 © 2016 Xylem Inc.