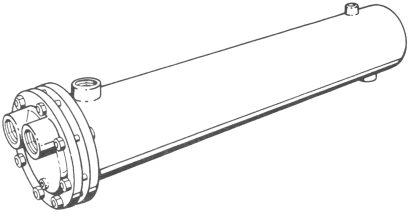


<b>JOB:</b>   <b>UNIT TAG:</b> <b>ENGINEER:</b> <b>CONTRACTOR:</b>	<b>REPRESENTATIVE:</b>   <b>ORDER NO.</b> <b>SUBMITTED BY:</b> <b>APPROVED BY:</b>	<b>DATE:</b> <b>DATE:</b> <b>DATE:</b>
---	---	--



## 12" Series Type "WU" Heat Exchangers "U" Tube Design

### DESCRIPTION

B & G Types "WU" Heat Exchangers are of the shell and tube type. The tube bundle is of "U" bend construction with tube ends expanded into a stationary tube sheet. This construction permits ample expansion or contraction for wide temperature variations. A fluid entering the tubes is heated or cooled by a fluid being circulated through a baffled shell. The unit is designed primarily for pumped circulation through the shell.

Standard "WU" Heat Exchangers are constructed according to ASME requirements for pressure and temperatures noted in table on back.

A Manufacturers' Data Report for Pressure Vessels, Form No. U-1, as required by the provisions of the ASME Code Rules, is furnished with each unit upon request. This form is signed by an authorized inspector, holding a national Board Commission, and who is employed by an authorized inspection agency, certifying that construction conforms to the latest ASME code for pressure vessels. The ASME "U" symbol is stamped on each vessel. In addition, each unit is registered with the national Board of Boiler and pressure Vessel Inspectors.

### RECOMMENDED "WU" HEAT EXCHANGER

MODEL NO. \_\_\_\_\_

HEATING SURFACE (SQ. FT.) \_\_\_\_\_

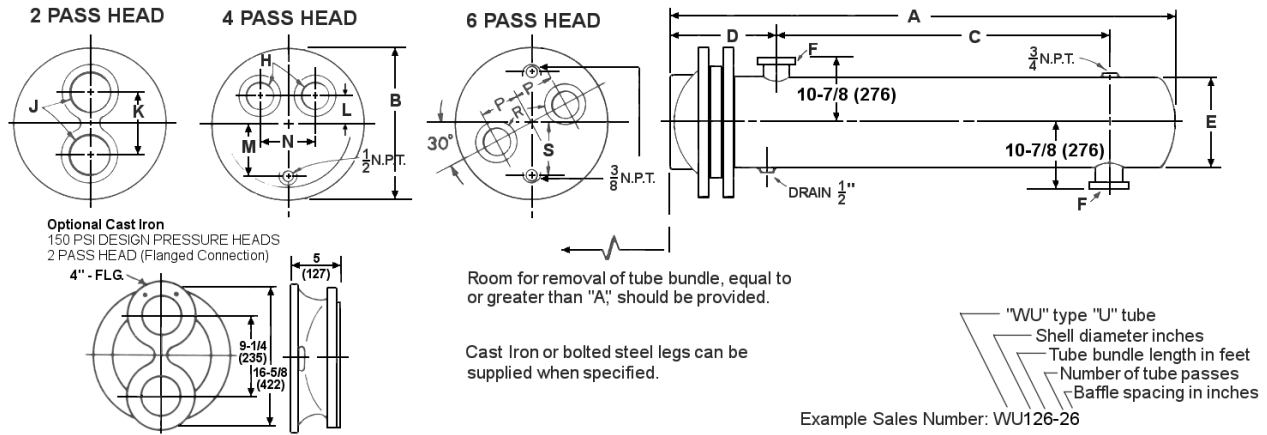
	TUBE SIDE	SHELL SIDE
1. Fluid Circulated.....	_____	_____
2. Total Flow Expressed in GPM, GRH or lbs./hr.....	_____	_____
3. Temperature In/Out.....	_____ / _____	_____ / _____
4. Transfer BTU/hr.....	_____	_____
5. Pressure Drop.....	_____	_____
6. Fouling Factor or Percentage of Additional Surface.....	_____	_____
<b>Note:</b> Following applies only to fluids other than water		
7. Specific Gravity.....	_____	_____
8. Specific Heat.....	_____	_____
9. Latent Heat.....	_____	_____
10. Viscosity**.....	_____	_____
11. Thermal Conductivity.....	_____	_____

### APPROVALS

\*\*Expressed in Proper Units and Temperature such as centipoises @ °F

# 12 " Series Type "WU" Heat Exchangers "U" Tube Design

C-131.4A



## DIMENSIONS - Inches (mm)

UNIT NUMBER	2 PASS								HEATING SURFACE Sq. Ft. (Sq. M)	APPROX. SHIPPING Wt. Lbs. (Kg)
	J	K	A	B	C	D	E	F		
WU124-26	4 NPT	7-3/4 (197)	56-1/2 (1435)	16-5/8 (422)	37-1/4 (946)	10-1/4 (260)	12-3/4 (324)	5 FLG	83 (7.7)	456 (207)
WU125-26	4 NPT	7-3/4 (197)	68-1/2 (1740)	16-5/8 (422)	49-1/4 (1251)	10-1/4 (260)	12-3/4 (324)	5 FLG	104 (9.7)	525 (238)
WU126-26	4 NPT	7-3/4 (197)	80-1/2 (2045)	16-5/8 (422)	61-1/4 (1556)	10-1/4 (260)	12-3/4 (324)	5 FLG	126 (11.7)	594 (269)
WU127-26	4 NPT	7-3/4 (197)	92-1/2 (2350)	16-5/8 (422)	73-1/4 (1861)	10-1/4 (260)	12-3/4 (324)	5 FLG	148 (13.7)	663 (301)
WU128-26	4 NPT	7-3/4 (197)	104-1/2 (2654)	16-5/8 (422)	85-1/4 (2165)	10-1/4 (260)	12-3/4 (324)	5 FLG	169 (15.7)	732 (332)
WU129-26	4 NPT	7-3/4 (197)	116-1/2 (2959)	16-5/8 (422)	97-1/4 (2470)	10-1/4 (260)	12-3/4 (324)	5 FLG	191 (17.7)	801 (363)

UNIT NUMBER	4 PASS										HEATING SURFACE Sq. Ft. (Sq. M)	APPROX. SHIPPING Wt. Lbs. (Kg)
	H	L	M	N	A	B	C	D	E	F		
WU124-46	4 NPT	2-5/8 (67)	5-7/8 (149)	5-7/8 (149)	56-1/2 (1435)	16-5/8 (422)	37-1/4 (946)	10-1/4 (260)	12-3/4 (324)	5 FLG	78 (7.2)	456 (207)
WU125-46	4 NPT	2-5/8 (67)	5-7/8 (149)	5-7/8 (149)	68-1/2 (1740)	16-5/8 (422)	49-1/4 (1251)	10-1/4 (260)	12-3/4 (324)	5 FLG	98 (9.1)	525 (238)
WU126-46	4 NPT	2-5/8 (67)	5-7/8 (149)	5-7/8 (149)	80-1/2 (2045)	16-5/8 (422)	61-1/4 (1556)	10-1/4 (260)	12-3/4 (324)	5 FLG	119 (11.1)	594 (269)
WU127-46	4 NPT	2-5/8 (67)	5-7/8 (149)	5-7/8 (149)	92-1/2 (2350)	16-5/8 (422)	73-1/4 (1861)	10-1/4 (260)	12-3/4 (324)	5 FLG	139 (12.9)	663 (301)
WU128-46	4 NPT	2-5/8 (67)	5-7/8 (149)	5-7/8 (149)	104-1/2 (2654)	16-5/8 (422)	85-1/4 (2165)	10-1/4 (260)	12-3/4 (324)	5 FLG	160 (14.9)	732 (332)
WU129-46	4 NPT	2-5/8 (67)	5-7/8 (149)	5-7/8 (149)	116-1/2 (2959)	16-5/8 (422)	97-1/4 (2470)	10-1/4 (260)	12-3/4 (324)	5 FLG	180 (16.7)	801 (363)

UNIT NUMBER	6 PASS										HEATING SURFACE Sq. Ft. (Sq. M)	APPROX. SHIPPING Wt. Lbs. (Kg)
	P	R	S	A	B	C	D	E	F			
WU124-66	4-1/2 (114)	3 NPT	5-13/16 (148)	56-1/2 (1435)	16-5/8 (422)	37-1/4 (946)	10-1/4 (260)	12-3/4 (324)	5 FLG	68 (6.3)	456 (207)	
WU125-66	4-1/2 (114)	3 NPT	5-13/16 (148)	68-1/2 (1740)	16-5/8 (422)	49-1/4 (1251)	10-1/4 (260)	12-3/4 (324)	5 FLG	85 (7.9)	525 (238)	
WU126-66	4-1/2 (114)	3 NPT	5-13/16 (148)	80-1/2 (2045)	16-5/8 (422)	61-1/4 (1556)	10-1/4 (260)	12-3/4 (324)	5 FLG	103 (9.6)	594 (269)	
WU127-66	4-1/2 (114)	3 NPT	5-13/16 (148)	92-1/2 (2350)	16-5/8 (422)	73-1/4 (1861)	10-1/4 (260)	12-3/4 (324)	5 FLG	121 (11.2)	663 (301)	
WU128-66	4-1/2 (114)	3 NPT	5-13/16 (148)	104-1/2 (2654)	16-5/8 (422)	85-1/4 (2165)	10-1/4 (260)	12-3/4 (324)	5 FLG	139 (12.9)	732 (332)	
WU129-66	4-1/2 (114)	3 NPT	5-13/16 (148)	116-1/2 (2959)	16-5/8 (422)	97-1/4 (2470)	10-1/4 (260)	12-3/4 (324)	5 FLG	156 (14.5)	801 (363)	

Dimensions are subject to change. Not to be used for construction purposes unless certified.

## DESIGN PRESSURES - ASME CONSTRUCTION CAST IRON & BRASS UNITS

TYPE	DESIGN PRESSURES				DESIGN TEMPERATURES*	
	TUBE SIDE		SHELL SIDE		TUBE & SHELL SIDE	
	DESIGN	TEST	DESIGN	TEST	CAST IRON	BRASS
4 & 6 Pass	150 psi (10 bar)	300 psi (20 bar)	150 psi (10 bar)	300 psi (20 bar)	375°F (190°C)	300°F (149°C)
2 Pass	125 psi (8 bar)	300 psi (20 bar)	150 psi (10 bar)	300 psi (20 bar)	375°F (190°C)	300°F (149°C)
2 Pass (Flanged) Cast Iron Only	150 psi (10 bar)	300 psi (20 bar)	150 psi (10 bar)	300 psi (20 bar)	375°F (190°C)	-

## MATERIALS

PART	STANDARD CAST IRON UNIT	BRASS UNIT
	2, 4 & 6 Pass	2 & 4 Pass
Shell	Steel	Steel
Head	Cast Iron	Cast Brass
Tubes 3/4" O.D.	Cooper	Cooper
Tubesheets	Steel	Royal Naval Brass
Baffles	Steel	Steel
Nuts & Bolts	Steel	Steel

\*For design pressures and temperatures higher than shown, consult B & G Representative for specifications and dimensions.

**Caution:** A properly sized relief valve must be installed on the heated side to protect heat exchangers from possible damage due to volumetric expansion.

Xylem Inc.  
8200 N. Austin Avenue  
Morton Grove, IL 60053  
Phone: (847)966-3700  
Fax: (847)965-8379  
www.bellgossett.com

**xylem**  
Let's Solve Water

Bell & Gossett is a trademark of Xylem Inc. or one of its subsidiaries.  
© 2013 Xylem Inc.