

# Straigh Tube-Bonnet Head Design Type "OC" Heat Exchangers

**DUTY:**

1. Exchanger Model Number \_\_\_\_\_  
 Type of service....Condenser \_\_\_\_\_ Evaporator \_\_\_\_\_ Cooler \_\_\_\_\_ Heater \_\_\_\_\_

	TUBE SIDE	SHELL SIDE	
2. Fluid Circulated	_____	_____	<b>APPROVALS</b>
3. Total Flow*	_____	_____	
4. Specific Gravity	_____	_____	
5. Specific Heat	_____	_____	
6. Latent Heat	_____	_____	
7. Viscosity**	_____	_____	
8. Thermal Conductivity	_____	_____	
9. Temperature In/Out	_____	_____	
10. Heat Load BTU/hr	_____	_____	
11. Openings (Flanged) (Threded)	_____	_____	
12. Operating Pressure	_____	_____	
13. Design Pressure	_____	_____	
14. Maximum Operating Temperature of Unit	_____	_____	
15. Pressure Drop (Maximum)	_____	_____	
16. Fouling Factor or Percentage of Additional Surface	_____	_____	

\*Expressed in GPM, GHP, CFM, CFH, lb./min or lbs./hr  
 \*\*Expressed in Proper Units and Temperature such as centipoises @ °F.

**MATERIALS:**

1. Heads _____	5. Tube Size O.D. & Gauge _____
2. Shell _____	6. Gaskets _____
3. Tube Sheets _____	7. Gaskets _____
4. Tubes _____	8. <b>CODE:</b> ASME _____ Other _____

Not available in brass

**DESCRIPTION**

B & G Types "OC" Heat Exchangers are of the shell and straight tube type. Tube bundles are removable and tubes are easily easily cleaned. Tube ends are roller expanded into both the front and rear tube sheets. Flotting tube sheet construction within the rear head compensates for expansion or contraction of the entire bundle regardless of temperature variations. Baffles are stamped to close tolerances, minimizing the slippage of liquids between the baffles and the wall.

**CONSTRUCTION MATERIALS**

B & G Types "OC" Heat Exchangers are constructed according to ASME requirements for pressures and temperatures. A Manufacturers Data Report for Pressure Vessels, Form No. U-1 as required by the provisions of the ASME Code Rules is furnished with each unit when requested. In addition, each unit is registered with National Board of Boiler and Pressure Vessel Inspectors. This form is signed by an authorized inspector, holding a National Board Commision, and who is employed by an authorized inspection agency, certifying that construction confirms to the latest ASME Code for pressure vessels. The ASME "U" symbol is stamped on each vessel.

Xylem Inc.  
 8200 N. Austin Avenue  
 Morton Grove, IL 60053  
 Phone: (847)966-3700  
 Fax: (847)965-8379  
 www.bellgossett.com

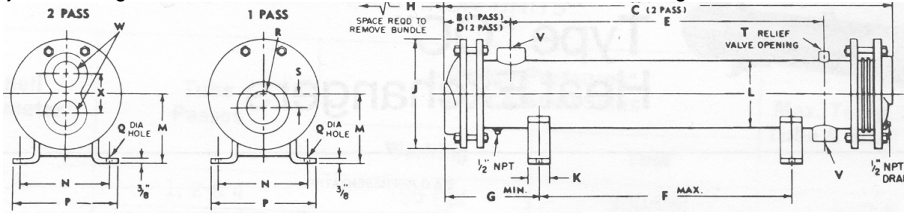


# TYPE "OC" HEAT EXCHANGERS (Straight Tube-Bonnet Head Design)

C-221A

## DIMENSIONS FOR OC-62 through OC-1214

NOTES: Bolt holes straddle center lines on flanged openings. Removable bundle. Removable heads.  
Dimensions are subject to change. If exact dimensions are needed, write for certified drawings.



"OE" with expansion joint  
"OF" without expansion joint  
Shell diameter in inches  
Tube Length in feet  
Number of tube passes

Complete sales number consists of example: OF-86\*

UNIT NUMBER	HEAD DIMENSIONS IN INCHES (MM)								DIMENSIONS IN INCHES (MM)											Heating Surface (Sq. Ft.)		
	1 PASS		2 PASS		1 PASS		2 PASS		E	F	G	H	J	K	L	M	N	P	Q		T	V
	R	S	W	X	A	B	C	D														
OC-62*	2-1/2 NPT (34.9)	1-3/8 2 (95.2)	3-3/4 (95.2)	32-1/2 (825.5)	8-1/4 (209.6)	31 (787)	7-3/8 (187.3)	13-3/4 (349.2)	7 (178)	11 (279)	25 (635)	10-1/2 (266.7)	2-1/2 (63.5)	6-5/8 (168.3)	6-11/16 (169.9)	6-3/4 (171.4)	8-1/8 (206.4)	0-3/4 (19)	1 NPT	2 NPT	12.9 (328)	
OC-63*	2-1/2 NPT (34.9)	1-3/8 2 (95.2)	3-3/4 (95.2)	44-1/2 (1130.3)	8-1/4 (209.6)	43 (1092)	7-3/8 (187.3)	25-3/4 (654)	19 (483)	11 (279)	37 (940)	10-1/2 (266.7)	2-1/2 (63.5)	6-5/8 (168.3)	6-11/16 (169.9)	6-3/4 (171.4)	8-1/8 (206.4)	0-3/4 (19)	1 NPT	2 NPT	19.4 (493)	
OC-64*	2-1/2 NPT (34.9)	1-3/8 2 (95.2)	3-3/4 (95.2)	56-1/2 (1435.1)	8-1/4 (209.6)	55 (1397)	7-3/8 (187.3)	37-3/4 (958.8)	31 (787)	11 (279)	49 (1245)	10-1/2 (266.7)	2-1/2 (63.5)	6-5/8 (168.3)	6-11/16 (169.9)	6-3/4 (171.4)	8-1/8 (206.4)	0-3/4 (19)	1 NPT	2 NPT	26.0 (660)	
OC-65*	2-1/2 NPT (34.9)	1-3/8 2 (95.2)	3-3/4 (95.2)	68-1/2 (1739.9)	8-1/4 (209.6)	67 (1702)	7-3/8 (187.3)	49-3/4 (1263.6)	43 (1092)	11 (279)	61 (1549)	10-1/2 (266.7)	2-1/2 (63.5)	6-5/8 (168.3)	6-11/16 (169.9)	6-3/4 (171.4)	8-1/8 (206.4)	0-3/4 (19)	1 NPT	2 NPT	32.6 (828)	
OC-66*	2-1/2 NPT (34.9)	1-3/8 2 (95.2)	3-3/4 (95.2)	80-1/2 (2044.7)	8-1/4 (209.6)	79 (2007)	7-3/8 (187.3)	61-3/4 (1568.4)	55 (1397)	11 (279)	73 (1854)	10-1/2 (266.7)	2-1/2 (63.5)	6-5/8 (168.3)	6-11/16 (169.9)	6-3/4 (171.4)	8-1/8 (206.4)	0-3/4 (19)	1 NPT	2 NPT	39.1 (993)	
OC-67*	2-1/2 NPT (34.9)	1-3/8 2 (95.2)	3-3/4 (95.2)	92-1/2 (2349.5)	8-1/4 (209.6)	91 (2311)	7-3/8 (187.3)	73-3/4 (1873.2)	67 (1702)	11 (279)	85 (2159)	10-1/2 (266.7)	2-1/2 (63.5)	6-5/8 (168.3)	6-11/16 (169.9)	6-3/4 (171.4)	8-1/8 (206.4)	0-3/4 (19)	1 NPT	2 NPT	45.7 (1161)	
OC-68*	2-1/2 NPT (34.9)	1-3/8 2 (95.2)	3-3/4 (95.2)	104-1/2 (2654.3)	8-1/4 (209.6)	103 (2616)	7-3/8 (187.3)	85-3/4 (2178)	79 (2007)	11 (279)	97 (2464)	10-1/2 (266.7)	2-1/2 (63.5)	6-5/8 (168.3)	6-11/16 (169.9)	6-3/4 (171.4)	8-1/8 (206.4)	0-3/4 (19)	1 NPT	2 NPT	52.2 (1326)	
OC-69*	2-1/2 NPT (34.9)	1-3/8 2 (95.2)	3-3/4 (95.2)	116-1/2 (2959.1)	8-1/4 (209.6)	115 (2921)	7-3/8 (187.3)	97-3/4 (2482.8)	91 (2311)	11 (279)	109 (2769)	10-1/2 (266.7)	2-1/2 (63.5)	6-5/8 (168.3)	6-11/16 (169.9)	6-3/4 (171.4)	8-1/8 (206.4)	0-3/4 (19)	1 NPT	2 NPT	58.8 (1494)	
OC-610*	2-1/2 NPT (34.9)	1-3/8 2 (95.2)	3-3/4 (95.2)	128-1/2 (3263.9)	8-1/4 (209.6)	127 (3226)	7-3/8 (187.3)	109-3/4 (2787.6)	103 (2616)	11 (279)	121 (3073)	10-1/2 (266.7)	2-1/2 (63.5)	6-5/8 (168.3)	6-11/16 (169.9)	6-3/4 (171.4)	8-1/8 (206.4)	0-3/4 (19)	1 NPT	2 NPT	65.3 (1659)	
OC-82*	4 NPT (38.1)	1-1/2 3 (127)	5 (127)	33-5/8 (854.1)	9-1/16 (230.2)	32-1/8 (816)	8-3/8 (212.7)	13-1/4 (336.5)	7 (178)	12 (305)	24 (610)	12-1/2 (317.5)	2-1/2 (63.5)	8-5/8 (219.1)	7 (178)	9 (229)	10-3/8 (263.5)	0-3/4 (19)	1-1/4 NPT	2-1/2 NPT	24.6 (625)	
OC-83*	4 NPT (38.1)	1-1/2 3 (127)	5 (127)	45-5/8 (1158.9)	9-1/16 (230.2)	44-1/8 (1120.8)	8-3/8 (212.7)	25-1/4 (641.3)	19 (483)	12 (305)	36 (914)	12-1/2 (317.5)	2-1/2 (63.5)	8-5/8 (219.1)	7 (178)	9 (229)	10-3/8 (263.5)	0-3/4 (19)	1-1/4 NPT	2-1/2 NPT	37.1 (942)	
OC-84*	4 NPT (38.1)	1-1/2 3 (127)	5 (127)	57-5/8 (1463.7)	9-1/16 (230.2)	56-1/8 (1425.6)	8-3/8 (212.7)	37-1/4 (946.2)	41 (1029)	12 (305)	48 (1219)	12-1/2 (317.5)	2-1/2 (63.5)	8-5/8 (219.1)	7 (178)	9 (229)	10-3/8 (263.5)	0-3/4 (19)	1-1/4 NPT	2-1/2 NPT	49-1/2 (1257)	
OC-85*	4 NPT (38.1)	1-1/2 3 (127)	5 (127)	69-5/8 (1768.5)	9-1/16 (230.2)	68-1/8 (1730.4)	8-3/8 (212.7)	49-1/4 (1250.9)	43 (1092)	12 (305)	60 (1524)	12-1/2 (317.5)	2-1/2 (63.5)	8-5/8 (219.1)	7 (178)	9 (229)	10-3/8 (263.5)	0-3/4 (19)	1-1/4 NPT	2-1/2 NPT	61.9 (1572)	
OC-86*	4 NPT (38.1)	1-1/2 3 (127)	5 (127)	81-5/8 (2073.3)	9-1/16 (230.2)	80-1/8 (2035.2)	8-3/8 (212.7)	61-1/4 (1555.8)	55 (1397)	12 (305)	72 (1829)	12-1/2 (317.5)	2-1/2 (63.5)	8-5/8 (219.1)	7 (178)	9 (229)	10-3/8 (263.5)	0-3/4 (19)	1-1/4 NPT	2-1/2 NPT	74.4 (1890)	
OC-87*	4 NPT (38.1)	1-1/2 3 (127)	5 (127)	93-5/8 (2378.1)	9-1/16 (230.2)	92-1/8 (2340)	8-3/8 (212.7)	73-1/4 (1860.6)	67 (1702)	12 (305)	84 (2134)	12-1/2 (317.5)	2-1/2 (63.5)	8-5/8 (219.1)	7 (178)	9 (229)	10-3/8 (263.5)	0-3/4 (19)	1-1/4 NPT	2-1/2 NPT	86.8 (2205)	
OC-88*	4 NPT (38.1)	1-1/2 3 (127)	5 (127)	105-5/8 (2682.9)	9-1/16 (230.2)	104-1/8 (2644.8)	8-3/8 (212.7)	85-1/4 (2165.4)	79 (2007)	12 (305)	96 (2438)	12-1/2 (317.5)	2-1/2 (63.5)	8-5/8 (219.1)	7 (178)	9 (229)	10-3/8 (263.5)	0-3/4 (19)	1-1/4 NPT	2-1/2 NPT	99.2 (2520)	
OC-89*	4 NPT (38.1)	1-1/2 3 (127)	5 (127)	117-5/8 (2987.7)	9-1/16 (230.2)	116-1/8 (2949.6)	8-3/8 (212.7)	97-1/4 (2470.1)	91 (2311)	12 (305)	108 (2743)	12-1/2 (317.5)	2-1/2 (63.5)	8-5/8 (219.1)	7 (178)	9 (229)	10-3/8 (263.5)	0-3/4 (19)	1-1/4 NPT	2-1/2 NPT	111.6 (2835)	
OC-810*	4 NPT (38.1)	1-1/2 3 (127)	5 (127)	129-5/8 (3292.5)	9-1/16 (230.2)	128-1/8 (3254.4)	8-3/8 (212.7)	109-1/4 (2775)	103 (2616)	12 (305)	120 (3048)	12-1/2 (317.5)	2-1/2 (63.5)	8-5/8 (219.1)	7 (178)	9 (229)	10-3/8 (263.5)	0-3/4 (19)	1-1/4 NPT	2-1/2 NPT	124.1 (3152)	
OC-811*	4 NPT (38.1)	1-1/2 3 (127)	5 (127)	141-5/8 (3597.3)	9-1/16 (230.2)	140-1/8 (3559.2)	8-3/8 (212.7)	121-1/4 (3079.8)	115 (2921)	12 (305)	132 (3353)	12-1/2 (317.5)	2-1/2 (63.5)	8-5/8 (219.1)	7 (178)	9 (229)	10-3/8 (263.5)	0-3/4 (19)	1-1/4 NPT	2-1/2 NPT	136-1/2 (3467)	
OC-812*	4 NPT (38.1)	1-1/2 3 (127)	5 (127)	153-5/8 (3902.1)	9-1/16 (230.2)	152-1/8 (3864)	8-3/8 (212.7)	133-1/4 (3384.6)	127 (3226)	12 (305)	144 (3658)	12-1/2 (317.5)	2-1/2 (63.5)	8-5/8 (219.1)	7 (178)	9 (229)	10-3/8 (263.5)	0-3/4 (19)	1-1/4 NPT	2-1/2 NPT	148.9 (3782)	
OC-104*	4 NPT (38.1)	1-1/2 4 (149.2)	5-7/8 (149.2)	58 (1473)	9-7/8 (250.8)	56-1/2 (1435.1)	9 (229)	36-1/4 (920.8)	29 (737)	13 (330)	50 (1270)	14-5/8 (371.5)	2-1/2 (63.5)	10-3/4 (273)	9-3/8 (238.1)	9-5/8 (244.5)	11-1/8 (282.6)	0-7/8 (22.2)	1-1/2 NPT	3 NPT	87 (2210)	
OC-105*	4 NPT (38.1)	1-1/2 4 (149.2)	5-7/8 (149.2)	70 (1778)	9-7/8 (250.8)	68-1/2 (1739.9)	9 (229)	48-1/4 (1225.6)	41 (1041)	13 (330)	62 (1575)	14-5/8 (371.5)	2-1/2 (63.5)	10-3/4 (273)	9-3/8 (238.1)	9-5/8 (244.5)	11-1/8 (282.6)	0-7/8 (22.2)	1-1/2 NPT	3 NPT	109 (2769)	
OC-106*	4 NPT (38.1)	1-1/2 4 (149.2)	5-7/8 (149.2)	72 (1829)	9-7/8 (250.8)	80-1/2 (2044.7)	9 (229)	60-1/4 (1530.4)	53 (1346)	13 (330)	74 (1880)	14-5/8 (371.5)	2-1/2 (63.5)	10-3/4 (273)	9-3/8 (238.1)	9-5/8 (244.5)	11-1/8 (282.6)	0-7/8 (22.2)	1-1/2 NPT	3 NPT	131 (3327)	
OC-107*	4 NPT (38.1)	1-1/2 4 (149.2)	5-7/8 (149.2)	94 (2388)	9-7/8 (250.8)	92-1/2 (2349.5)	9 (229)	72-1/4 (1835.2)	65 (1651)	13 (330)	86 (2184)	14-5/8 (371.5)	2-1/2 (63.5)	10-3/4 (273)	9-3/8 (238.1)	9-5/8 (244.5)	11-1/8 (282.6)	0-7/8 (22.2)	1-1/2 NPT	3 NPT	153 (3886)	
OC-108*	4 NPT (38.1)	1-1/2 4 (149.2)	5-7/8 (149.2)	106 (2692)	9-7/8 (250.8)	104-1/2 (2654.3)	9 (229)	84-1/4 (2140)	77 (1956)	13 (330)	98 (2489)	14-5/8 (371.5)	2-1/2 (63.5)	10-3/4 (273)	9-3/8 (238.1)	9-5/8 (244.5)	11-1/8 (282.6)	0-7/8 (22.2)	1-1/2 NPT	3 NPT	175 (4445)	
OC-109*	4 NPT (38.1)	1-1/2 4 (149.2)	5-7/8 (149.2)	118 (2997)	9-7/8 (250.8)	116-1/2 (2959.1)	9 (229)	96-1/4 (2444.8)	89 (2261)	13 (330)	110 (2794)	14-5/8 (371.5)	2-1/2 (63.5)	10-3/4 (273)	9-3/8 (238.1)	9-5/8 (244.5)	11-1/8 (282.6)	0-7/8 (22.2)	1-1/2 NPT	3 NPT	197 (5004)	
OC-1010*	4 NPT (38.1)	1-1/2 4 (149.2)	5-7/8 (149.2)	130 (3302)	9-7/8 (250.8)	128-1/2 (3263.9)	9 (229)	108-1/4 (2749.5)	101 (2565)	13 (330)	122 (3099)	14-5/8 (371.5)	2-1/2 (63.5)	10-3/4 (273)	9-3/8 (238.1)	9-5/8 (244.5)	11-1/8 (282.6)	0-7/8 (22.2)	1-1/2 NPT	3 NPT	219 (5563)	
OC-1011*	4 NPT (38.1)	1-1/2 4 (149.2)	5-7/8 (149.2)	142 (3607)	9-7/8 (250.8)	140-1/2 (3568.7)	9 (229)	120-1/4 (3054.4)	113 (2870)	13 (330)	134 (3404)	14-5/8 (371.5)	2-1/2 (63.5)	10-3/4 (273)	9-3/8 (238.1)	9-5/8 (244.5)	11-1/8 (282.6)	0-7/8 (22.2)	1-1/2 NPT	3 NPT	241 (6121)	
OC-1012*	4 NPT (38.1)	1-1/2 4 (149.2)	5-7/8 (149.2)	154 (3912)	9-7/8 (250.8)	152-1/2 (3873.5)	9 (229)	132-1/4 (3359.2)	125 (3175)	13 (330)	146 (3708)	14-5/8 (371.5)	2-1/2 (63.5)	10-3/4 (273)	9-3/8 (238.1)	9-5/8 (244.5)	11-1/8 (282.6)	0-7/8 (22.2)	1-1/2 NPT	3 NPT	263 (6680)	

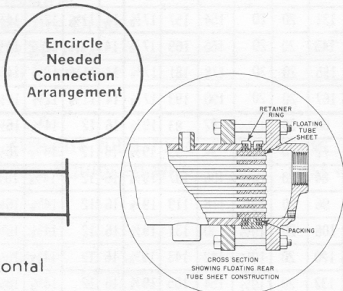
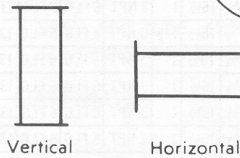
OC-1013-a	4 NPT	1-1/2 (38.1)	4 NPT	5-7/8 (149.2)	166 (4216)	9-7/8 (250.8)	164-1/2 (4178.3)	9 (229)	144-1/4 (3664)	137 (3480)	13 (330)	158 (4013)	14-5/8 (371.5)	2-1/2 (63.5)	10-3/4 (273)	9-3/8 (238.1)	9-5/8 (244.5)	11-1/8 (282.6)	0-7/8 (22.2)	1-1/2 NPT	3 NPT	284 (7214)
OC-1014-a	4 NPT	1-1/2 (38.1)	4 NPT	5-7/8 (149.2)	178 (4521)	9-7/8 (250.8)	176-1/2 (4483.1)	9 (229)	156-1/4 (3968.8)	149 (3785)	13 (330)	170 (4318)	14-5/8 (371.5)	2-1/2 (63.5)	10-3/4 (273)	9-3/8 (238.1)	9-5/8 (244.5)	11-1/8 (282.6)	0-7/8 (22.2)	1-1/2 NPT	3 NPT	306 (7772)

DIMENSIONS FOR OC-62 through OC-1214 (cONTINUED)

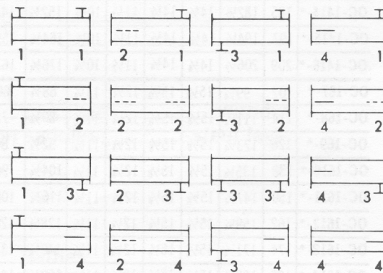
UNIT NUMBER	HEAD DIMENSIONS IN INCHES (MM)								DIMENSIONS IN INCHES (MM)											Heating Surface (Sq. Ft.)		
	1 PASS		2 PASS		1 PASS		2 PASS		E	F	G	H	J	K	L	M	N	P	Q		T	V
	R	S	W	X	A	B	C	D														
OC-126-*	4 NPT	1-1/4 (31.8)	4 NPT	7-3/4 (196.8)	83-1/4 (2114.5)	10-1/2 (266.7)	81-1/2 (2070.1)	9-3/8 (238.1)	60-1/4 (1530.4)	52 (1321)	14 (356)	72 (1829)	16-5/8 (422.3)	2-1/2 (63.5)	12-3/4 (323.8)	9-3/4 (247.6)	11-5/8 (295.3)	13-1/8 (333.4)	0-7/8 (22.2)	2 NPT	4 NPT	192 (4877)
OC-127-*	4 NPT	1-1/4 (31.8)	4 NPT	7-3/4 (196.8)	95-1/4 (2419.4)	10-1/2 (266.7)	93-1/2 (2374.9)	9-3/8 (238.1)	72-1/4 (1835.2)	64 (1626)	14 (356)	84 (2134)	16-5/8 (422.3)	2-1/2 (63.5)	12-3/4 (323.8)	9-3/4 (247.6)	11-5/8 (295.3)	13-1/8 (333.4)	0-7/8 (22.2)	2 NPT	4 NPT	224 (5690)
OC-128-*	4 NPT	1-1/4 (31.8)	4 NPT	7-3/4 (196.8)	107-1/4 (2724.1)	10-1/2 (266.7)	105-1/2 (2679.7)	9-3/8 (238.1)	84-1/4 (2140)	76 (1930)	14 (356)	96 (2438)	16-5/8 (422.3)	2-1/2 (63.5)	12-3/4 (323.8)	9-3/4 (247.6)	11-5/8 (295.3)	13-1/8 (333.4)	0-7/8 (22.2)	2 NPT	4 NPT	256 (6502)
OC-129-*	4 NPT	1-1/4 (31.8)	4 NPT	7-3/4 (196.8)	119-1/4 (3029)	10-1/2 (266.7)	117-1/2 (2984.5)	9-3/8 (238.1)	96-1/4 (2444.8)	88 (2235)	14 (356)	108 (2743)	16-5/8 (422.3)	2-1/2 (63.5)	12-3/4 (323.8)	9-3/4 (247.6)	11-5/8 (295.3)	13-1/8 (333.4)	0-7/8 (22.2)	2 NPT	4 NPT	288 (7315)
OC-1210-*	4 NPT	1-1/4 (31.8)	4 NPT	7-3/4 (196.8)	131-1/4 (3333.8)	10-1/2 (266.7)	129-1/2 (3289.3)	9-3/8 (238.1)	108-1/4 (2749.5)	100 (2540)	14 (356)	120 (3048)	16-5/8 (422.3)	2-1/2 (63.5)	12-3/4 (323.8)	9-3/4 (247.6)	11-5/8 (295.3)	13-1/8 (333.4)	0-7/8 (22.2)	2 NPT	4 NPT	320 (8128)
OC-1211-*	4 NPT	1-1/4 (31.8)	4 NPT	7-3/4 (196.8)	143-1/4 (3638.6)	10-1/2 (266.7)	141-1/2 (3594.1)	9-3/8 (238.1)	120-1/4 (3054.4)	112 (2845)	14 (356)	132 (3353)	16-5/8 (422.3)	2-1/2 (63.5)	12-3/4 (323.8)	9-3/4 (247.6)	11-5/8 (295.3)	13-1/8 (333.4)	0-7/8 (22.2)	2 NPT	4 NPT	352 (8941)
OC-1212-*	4 NPT	1-1/4 (31.8)	4 NPT	7-3/4 (196.8)	155-1/4 (3943.4)	10-1/2 (266.7)	153-1/2 (3898.9)	9-3/8 (238.1)	132-1/4 (3359.2)	124 (3150)	14 (356)	144 (3658)	16-5/8 (422.3)	2-1/2 (63.5)	12-3/4 (323.8)	9-3/4 (247.6)	11-5/8 (295.3)	13-1/8 (333.4)	0-7/8 (22.2)	2 NPT	4 NPT	384 (9754)
OC-1213-*	4 NPT	1-1/4 (31.8)	4 NPT	7-3/4 (196.8)	167-1/4 (4248.2)	10-1/2 (266.7)	165-1/2 (4203.7)	9-3/8 (238.1)	144-1/4 (3664)	136 (3454)	14 (356)	156 (3962)	16-5/8 (422.3)	2-1/2 (63.5)	12-3/4 (323.8)	9-3/4 (247.6)	11-5/8 (295.3)	13-1/8 (333.4)	0-7/8 (22.2)	2 NPT	4 NPT	416 (10566)
OC-1214-*	4 NPT	1-1/4 (31.8)	4 NPT	7-3/4 (196.8)	179-1/4 (4553)	10-1/2 (266.7)	177-1/2 (4508.5)	9-3/8 (238.1)	156-1/4 (3968.8)	148 (3759)	14 (356)	168 (4267)	16-5/8 (422.3)	2-1/2 (63.5)	12-3/4 (323.8)	9-3/4 (247.6)	11-5/8 (295.3)	13-1/8 (333.4)	0-7/8 (22.2)	2 NPT	4 NPT	448 (11379)

ARRANGEMENT WANTED

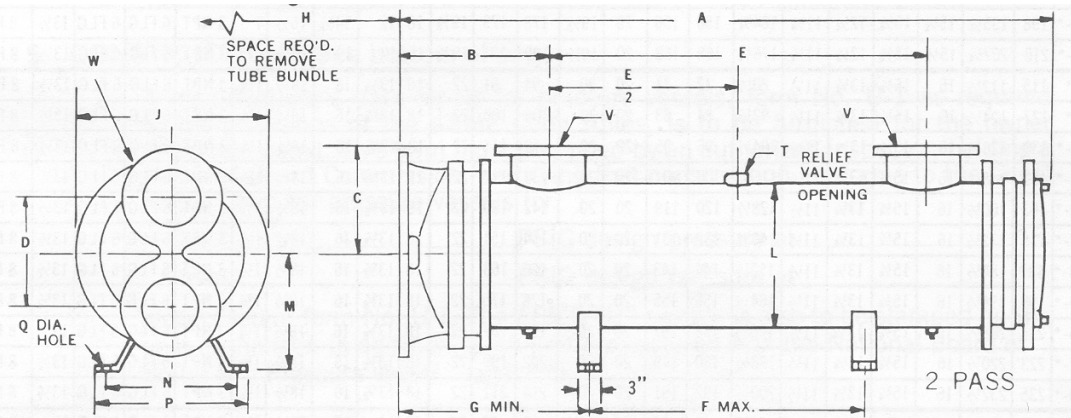
POSITION WHEN INSTALLED



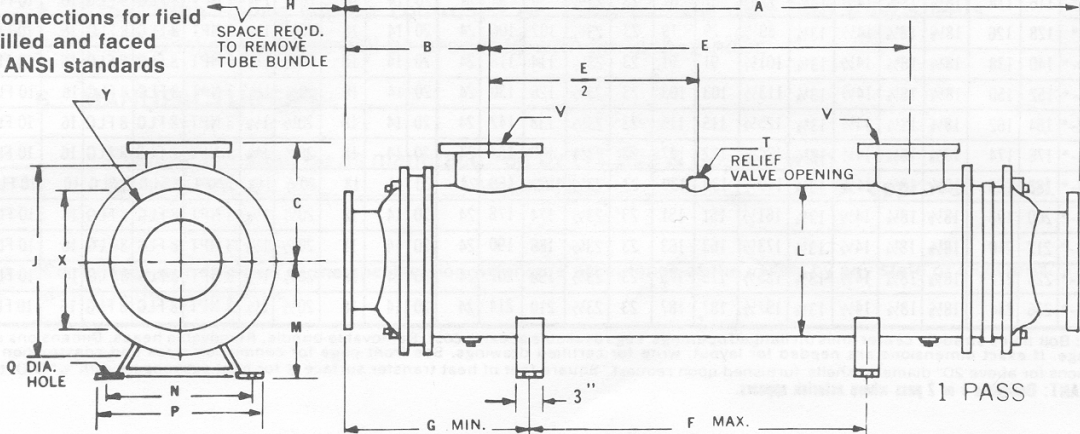
SHELL VARIATIONS SIDE VIEW SINGLE PASS



DIMENSIONS FOR OC-146 through OC-2018



Flange connections for field piping drilled and faced per 150# ANSI standards



TYPE "OC" HEAT EXCHANGERS (Straight Tube-Bonnet Head Design)

C-221A

DIMENSIONS FOR OC-62 through OC-1214 (CONTINUED)

UNIT NUMBER	HEAD DIMENSIONS IN INCHES (MM)										DIMENSIONS IN INCHES (MM)										Heating Surface (Sq. Ft.)				
	A		B		C	D	E	F		G		H		J	L	M	N	P	Q	T		V	W	X	Y
	1 PASS	2 PASS	1 PASS	2 PASS		2 PASS		1 PASS	2 PASS	1 PASS	2 PASS	1 PASS	2 PASS										2 PASS	1 PASS	1 PASS
OC-146*	89 (2261)	86-1/2 (2197.1)	14-3/4 (374.6)	14-3/4 (374.6)	11-1/2 (292.1)	10-1/4 (260.3)	56-3/4 (1441.4)	47 (1194)	47 (1194)	20 (508)	20 (508)	70 (1778)	73 (1854)	17-7/8 (454)	14 (356)	11-5/8 (295.3)	12-1/2 (317.5)	14-3/8 (365.1)	1 (25)	2	6	5 FLG	11 (279)	6 FLG	227 (5766)
OC-147*	101 (2565)	98-1/2 (2501.9)	14-3/4 (374.6)	14-3/4 (374.6)	11-1/2 (292.1)	10-1/4 (260.3)	68-3/4 (1746.2)	59 (1499)	59 (1499)	20 (508)	20 (508)	82 (2083)	85 (2159)	17-7/8 (454)	14 (356)	11-5/8 (295.3)	12-1/2 (317.5)	14-3/8 (365.1)	1 (25)	2	6	5 FLG	11 (279)	6 FLG	265 (6731)
OC-148*	113 (2870)	110-1/2 (2806.7)	14-3/4 (374.6)	14-3/4 (374.6)	11-1/2 (292.1)	10-1/4 (260.3)	80-3/4 (2051)	71 (1803)	71 (1803)	20 (508)	20 (508)	94 (2388)	97 (2464)	17-7/8 (454)	14 (356)	11-5/8 (295.3)	12-1/2 (317.5)	14-3/8 (365.1)	1 (25)	2	6	5 FLG	11 (279)	6 FLG	303 (7696)
OC-149*	125 (3175)	122-1/2 (3111.5)	14-3/4 (374.6)	14-3/4 (374.6)	11-1/2 (292.1)	10-1/4 (260.3)	92-3/4 (2355.8)	83 (2108)	83 (2108)	20 (508)	20 (508)	106 (2692)	109 (2769)	17-7/8 (454)	14 (356)	11-5/8 (295.3)	12-1/2 (317.5)	14-3/8 (365.1)	1 (25)	2	6	5 FLG	11 (279)	6 FLG	341 (8661)
OC-1410*	137 (3480)	134-1/2 (3416.3)	14-3/4 (374.6)	14-3/4 (374.6)	11-1/2 (292.1)	10-1/4 (260.3)	104-3/4 (2660.6)	95 (2413)	95 (2413)	20 (508)	20 (508)	118 (2997)	121 (3073)	17-7/8 (454)	14 (356)	11-5/8 (295.3)	12-1/2 (317.5)	14-3/8 (365.1)	1 (25)	2	6	5 FLG	11 (279)	6 FLG	379 (9627)
OC-1411*	149 (3785)	146-1/2 (3721.1)	14-3/4 (374.6)	14-3/4 (374.6)	11-1/2 (292.1)	10-1/4 (260.3)	116-3/4 (2965.4)	107 (2718)	107 (2718)	20 (508)	20 (508)	130 (3302)	133 (3378)	17-7/8 (454)	14 (356)	11-5/8 (295.3)	12-1/2 (317.5)	14-3/8 (365.1)	1 (25)	2	6	5 FLG	11 (279)	6 FLG	417 (10592)
OC-1412*	161 (4089)	158-1/2 (4025.9)	14-3/4 (374.6)	14-3/4 (374.6)	11-1/2 (292.1)	10-1/4 (260.3)	128-3/4 (3270.2)	119 (3023)	119 (3023)	20 (508)	20 (508)	142 (3607)	145 (3683)	17-7/8 (454)	14 (356)	11-5/8 (295.3)	12-1/2 (317.5)	14-3/8 (365.1)	1 (25)	2	6	5 FLG	11 (279)	6 FLG	455 (11557)
OC-1413*	173 (4394)	170-1/2 (4330.7)	14-3/4 (374.6)	14-3/4 (374.6)	11-1/2 (292.1)	10-1/4 (260.3)	140-3/4 (3575)	131 (3327)	131 (3327)	20 (508)	20 (508)	154 (3912)	157 (3988)	17-7/8 (454)	14 (356)	11-5/8 (295.3)	12-1/2 (317.5)	14-3/8 (365.1)	1 (25)	2	6	5 FLG	11 (279)	6 FLG	493 (12522)
OC-1414*	185 (4699)	182-1/2 (4635.5)	14-3/4 (374.6)	14-3/4 (374.6)	11-1/2 (292.1)	10-1/4 (260.3)	152-3/4 (3879.8)	143 (3632)	143 (3632)	20 (508)	20 (508)	166 (4216)	169 (4293)	17-7/8 (454)	14 (356)	11-5/8 (295.3)	12-1/2 (317.5)	14-3/8 (365.1)	1 (25)	2	6	5 FLG	11 (279)	6 FLG	531 (13487)
OC-1415*	197 (5004)	194-1/2 (4940.3)	14-3/4 (374.6)	14-3/4 (374.6)	11-1/2 (292.1)	10-1/4 (260.3)	164-3/4 (4184.6)	155 (3937)	155 (3937)	20 (508)	20 (508)	178 (4521)	181 (4597)	17-7/8 (454)	14 (356)	11-5/8 (295.3)	12-1/2 (317.5)	14-3/8 (365.1)	1 (25)	2	6	5 FLG	11 (279)	6 FLG	569 (14453)
OC-1416*	209 (5309)	206-1/2 (5245.1)	14-3/4 (374.6)	14-3/4 (374.6)	11-1/2 (292.1)	10-1/4 (260.3)	176-3/4 (4489.4)	167 (4242)	167 (4242)	20 (508)	20 (508)	190 (4826)	193 (4902)	17-7/8 (454)	14 (356)	11-5/8 (295.3)	12-1/2 (317.5)	14-3/8 (365.1)	1 (25)	2	6	5 FLG	11 (279)	6 FLG	606 (15392)
OC-167*	102 (2591)	99-1/4 (2521)	15-1/8 (384.2)	15-1/8 (384.2)	12-1/4 (311.2)	11-1/4 (285.8)	68-3/4 (1746.2)	60 (1524)	60 (1524)	20 (508)	19-1/2 (495.3)	82 (2083)	83 (2108)	19-7/8 (504.8)	16 (406)	12 (305)	14-5/8 (371.5)	16-1/2 (419.1)	1-1/8 (28.6)	3	6	6 FLG	13-1/2 (342.9)	8 FLG	331 (8407)
OC-168*	114 (2896)	111-1/4 (2825.8)	15-1/8 (384.2)	15-1/8 (384.2)	12-1/4 (311.2)	11-1/4 (285.8)	80-3/4 (2051)	72 (1829)	72 (1829)	20 (508)	19-1/2 (495.3)	94 (2388)	95 (2413)	19-7/8 (504.8)	16 (406)	12 (305)	14-5/8 (371.5)	16-1/2 (419.1)	1-1/8 (28.6)	3	6	6 FLG	13-1/2 (342.9)	8 FLG	379 (9627)
OC-169*	126 (3200)	123-1/4 (3130.5)	15-1/8 (384.2)	15-1/8 (384.2)	12-1/4 (311.2)	11-1/4 (285.8)	92-3/4 (2355.8)	84 (2134)	84 (2134)	20 (508)	19-1/2 (495.3)	106 (2692)	107 (2718)	19-7/8 (504.8)	16 (406)	12 (305)	14-5/8 (371.5)	16-1/2 (419.1)	1-1/8 (28.6)	3	6	6 FLG	13-1/2 (342.9)	8 FLG	426 (10820)
OC-1610*	138 (3505)	135-1/4 (3435.4)	15-1/8 (384.2)	15-1/8 (384.2)	12-1/4 (311.2)	11-1/4 (285.8)	104-3/4 (2660.6)	96 (2438)	96 (2438)	20 (508)	19-1/2 (495.3)	118 (2997)	119 (3023)	19-7/8 (504.8)	16 (406)	12 (305)	14-5/8 (371.5)	16-1/2 (419.1)	1-1/8 (28.6)	3	6	6 FLG	13-1/2 (342.9)	8 FLG	473 (12014)
OC-1611*	150 (3810)	147-1/4 (3740.2)	15-1/8 (384.2)	15-1/8 (384.2)	12-1/4 (311.2)	11-1/4 (285.8)	116-3/4 (2965.4)	108 (2743)	108 (2743)	20 (508)	19-1/2 (495.3)	130 (3302)	131 (3327)	19-7/8 (504.8)	16 (406)	12 (305)	14-5/8 (371.5)	16-1/2 (419.1)	1-1/8 (28.6)	3	6	6 FLG	13-1/2 (342.9)	8 FLG	521 (13233)
OC-1612*	162 (4115)	159-1/4 (4045)	15-1/8 (384.2)	15-1/8 (384.2)	12-1/4 (311.2)	11-1/4 (285.8)	128-3/4 (3270.2)	120 (3048)	120 (3048)	20 (508)	19-1/2 (495.3)	142 (3607)	143 (3632)	19-7/8 (504.8)	16 (406)	12 (305)	14-5/8 (371.5)	16-1/2 (419.1)	1-1/8 (28.6)	3	6	6 FLG	13-1/2 (342.9)	8 FLG	568 (14427)
OC-1613*	174 (4420)	171-1/4 (4349.8)	15-1/8 (384.2)	15-1/8 (384.2)	12-1/4 (311.2)	11-1/4 (285.8)	140-3/4 (3575)	132 (3353)	132 (3353)	20 (508)	19-1/2 (495.3)	154 (3912)	155 (3937)	19-7/8 (504.8)	16 (406)	12 (305)	14-5/8 (371.5)	16-1/2 (419.1)	1-1/8 (28.6)	3	6	6 FLG	13-1/2 (342.9)	8 FLG	616 (15646)
OC-1614*	186 (4724)	183-1/4 (4654.6)	15-1/8 (384.2)	15-1/8 (384.2)	12-1/4 (311.2)	11-1/4 (285.8)	152-3/4 (3879.8)	144 (3658)	144 (3658)	20 (508)	19-1/2 (495.3)	166 (4216)	167 (4242)	19-7/8 (504.8)	16 (406)	12 (305)	14-5/8 (371.5)	16-1/2 (419.1)	1-1/8 (28.6)	3	6	6 FLG	13-1/2 (342.9)	8 FLG	663 (16840)
OC-1615*	198 (5029)	195-1/4 (4959.3)	15-1/8 (384.2)	15-1/8 (384.2)	12-1/4 (311.2)	11-1/4 (285.8)	164-3/4 (4184.6)	156 (3962)	156 (3962)	20 (508)	19-1/2 (495.3)	178 (4521)	179 (4547)	19-7/8 (504.8)	16 (406)	12 (305)	14-5/8 (371.5)	16-1/2 (419.1)	1-1/8 (28.6)	3	6	6 FLG	13-1/2 (342.9)	8 FLG	711 (18059)
OC-1616*	210 (5334)	207-1/4 (5264.2)	15-1/8 (384.2)	15-1/8 (384.2)	12-1/4 (311.2)	11-1/4 (285.8)	176-3/4 (4489.4)	168 (4267)	168 (4267)	20 (508)	19-1/2 (495.3)	190 (4826)	191 (4851)	19-7/8 (504.8)	16 (406)	12 (305)	14-5/8 (371.5)	16-1/2 (419.1)	1-1/8 (28.6)	3	6	6 FLG	13-1/2 (342.9)	8 FLG	758 (19253)
OC-188*	115 (2921)	112-1/2 (2857.5)	16 (406)	15-3/4 (400)	13-1/4 (336.5)	11-1/2 (292.1)	80-1/2 (2044.7)	72 (1829)	71 (1803)	20 (508)	20 (508)	94 (2388)	91 (2311)	18 (457)	13-5/8 (346.1)	16 (406)	18-1/2 (469.9)	1-1/8 (28.6)	3	6	6 FLG	13-1/2 (342.9)	8 FLG	483 (12268)	
OC-189*	127 (3226)	124-1/2 (3162.3)	16 (406)	15-3/4 (400)	13-1/4 (336.5)	11-1/2 (292.1)	92-1/2 (2349.5)	84 (2134)	83 (2108)	20 (508)	20 (508)	106 (2692)	103 (2616)	22 (559)	18 (457)	13-5/8 (346.1)	16 (406)	18-1/2 (469.9)	1-1/8 (28.6)	3	6	6 FLG	13-1/2 (342.9)	8 FLG	543 (13792)
OC-1810*	139 (3531)	136-1/2 (3467.1)	16 (406)	15-3/4 (400)	13-1/4 (336.5)	11-1/2 (292.1)	104-1/2 (2654.3)	96 (2438)	95 (2413)	20 (508)	20 (508)	118 (2997)	115 (2921)	22 (559)	18 (457)	13-5/8 (346.1)	16 (406)	18-1/2 (469.9)	1-1/8 (28.6)	3	6	6 FLG	13-1/2 (342.9)	8 FLG	604 (15342)
OC-1811*	151 (3835)	148-1/2 (3771.9)	16 (406)	15-3/4 (400)	13-1/4 (336.5)	11-1/2 (292.1)	116-1/2 (2959.1)	108 (2743)	107 (2718)	20 (508)	20 (508)	130 (3302)	127 (3226)	22 (559)	18 (457)	13-5/8 (346.1)	16 (406)	18-1/2 (469.9)	1-1/8 (28.6)	3	6	6 FLG	13-1/2 (342.9)	8 FLG	665 (16891)
OC-1812*	163 (4140)	160-1/2 (4076.7)	16 (406)	15-3/4 (400)	13-1/4 (336.5)	11-1/2 (292.1)	128-1/2 (3263.9)	120 (3048)	119 (3023)	20 (508)	20 (508)	142 (3607)	139 (3531)	22 (559)	18 (457)	13-5/8 (346.1)	16 (406)	18-1/2 (469.9)	1-1/8 (28.6)	3	6	6 FLG	13-1/2 (342.9)	8 FLG	725 (18415)
OC-1813*	175 (4445)	172-1/2 (4381.5)	16 (406)	15-3/4 (400)	13-1/4 (336.5)	11-1/2 (292.1)	140-1/2 (3568.7)	132 (3353)	131 (3327)	20 (508)	20 (508)	154 (3912)	151 (3835)	22 (559)	18 (457)	13-5/8 (346.1)	16 (406)	18-1/2 (469.9)	1-1/8 (28.6)	3	6	6 FLG	13-1/2 (342.9)	8 FLG	786 (19964)
OC-1814*	187 (4750)	184-1/2 (4686.3)	16 (406)	15-3/4 (400)	13-1/4 (336.5)	11-1/2 (292.1)	152-1/2 (3873.5)	144 (3658)	143 (3632)	20 (508)	20 (508)	166 (4216)	163 (4140)	22 (559)	18 (457)	13-5/8 (346.1)	16 (406)	18-1/2 (469.9)	1-1/8 (28.6)	3	6	6 FLG	13-1/2 (342.9)	8 FLG	846 (21488)
OC-1815*	199 (5055)	196-1/2 (4991.1)	16 (406)	15-3/4 (400)	13-1/4 (336.5)	11-1/2 (292.1)	164-1/2 (4178.3)	156 (3962)	155 (3937)	20 (508)	20 (508)	178 (4521)	175 (4445)	22 (559)	18 (457)	13-5/8 (346.1)	16 (406)	18-1/2 (469.9)	1-1/8 (28.6)	3	6	6 FLG	13-1/2 (342.9)	8 FLG	907 (23038)
OC-1816*	211 (5359)	208-1/2 (5295.9)	16 (406)	15-3/4 (400)	13-1/4 (336.5)	11-1/2 (292.1)	176-1/2 (4483.1)	168 (4267)	167 (4242)	20 (508)	20 (508)	190 (4826)	187 (4750)	22 (559)	18 (457)	13-5/8 (346.1)	16 (406)	18-1/2 (469.9)	1-1/8 (28.6)	3	6	6 FLG	13-1/2 (342.9)	8 FLG	967 (24562)
OC-1817*	223 (5664)	220-1/2 (5600.7)	16 (406)	15-3/4 (400)	13-1/4 (336.5)	11-1/2 (292.1)	188-1/2 (4787.9)	180 (4572)	179 (4547)	20 (508)	20 (508)	202 (5131)	199 (5055)	22 (559)	18 (457)	13-5/8 (346.1)	16 (406)	18-1/2 (469.9)	1-1/8 (28.6)	3	6	6 FLG	13-1/2 (342.9)	8 FLG	1028 (26111)
OC-1818*	235 (5969)	232-1/2 (5905.5)	16 (406)	15-3/4 (400)	13-1/4 (336.5)	11-1/2 (292.1)	200-1/2 (5092.7)	192 (4877)	191 (4851)</																

OC-2012-*	164 (4166)	162 (4115)	18-1/8 (460.4)	18-1/4 (463.6)	14-1/2 (368.3)	13-3/4 (349.2)	125-1/2 (3187.7)	115 (2921)	115 (2921)	23 (584)	23-1/2 (596.9)	138 (3505)	142 (3607)	24 (610)	20 (508)	14 (356)	18 (457)	20-1/2 (520.7)	1-1/8 (28.6)	3	8	8	FLG	16 (406)	10 (23673)	932 (23673)
OC-2013-*	176 (4470)	174 (4420)	18-1/8 (460.4)	18-1/4 (463.6)	14-1/2 (368.3)	13-3/4 (349.2)	137-1/2 (3492.5)	127 (3226)	127 (3226)	23 (584)	23-1/2 (596.9)	150 (3810)	154 (3912)	24 (610)	20 (508)	14 (356)	18 (457)	20-1/2 (520.7)	1-1/8 (28.6)	3	8	8	FLG	16 (406)	10 (25679)	1011 (25679)
OC-2014-*	188 (4775)	186 (4724)	18-1/8 (460.4)	18-1/4 (463.6)	14-1/2 (368.3)	13-3/4 (349.2)	149-1/2 (3797.3)	139 (3531)	139 (3531)	23 (584)	23-1/2 (596.9)	162 (4115)	166 (4216)	24 (610)	20 (508)	14 (356)	18 (457)	20-1/2 (520.7)	1-1/8 (28.6)	3	8	8	FLG	16 (406)	10 (27635)	1088 (27635)
OC-2015-*	200 (5080)	198 (5029)	18-1/8 (460.4)	18-1/4 (463.6)	14-1/2 (368.3)	13-3/4 (349.2)	161-1/2 (4102.1)	151 (3835)	151 (3835)	23 (584)	23-1/2 (596.9)	174 (4420)	178 (4521)	24 (610)	20 (508)	14 (356)	18 (457)	20-1/2 (520.7)	1-1/8 (28.6)	3	8	8	FLG	16 (406)	10 (29616)	1166 (29616)
OC-2016-*	212 (5385)	210 (5334)	18-1/8 (460.4)	18-1/4 (463.6)	14-1/2 (368.3)	13-3/4 (349.2)	173-1/2 (4406.9)	163 (4140)	163 (4140)	23 (584)	23-1/2 (596.9)	186 (4724)	190 (4826)	24 (610)	20 (508)	14 (356)	18 (457)	20-1/2 (520.7)	1-1/8 (28.6)	3	8	8	FLG	16 (406)	10 (31598)	1244 (31598)
OC-2017-*	224 (5690)	222 (5639)	18-1/8 (460.4)	18-1/4 (463.6)	14-1/2 (368.3)	13-3/4 (349.2)	185-1/2 (4711.7)	175 (4445)	175 (4445)	23 (584)	23-1/2 (596.9)	198 (5029)	202 (5131)	24 (610)	20 (508)	14 (356)	18 (457)	20-1/2 (520.7)	1-1/8 (28.6)	3	8	8	FLG	16 (406)	10 (33579)	1322 (33579)
OC-2018-*	236 (5994)	234 (5944)	18-1/8 (460.4)	18-1/4 (463.6)	14-1/2 (368.3)	13-3/4 (349.2)	197-1/2 (5016.5)	187 (4750)	187 (4750)	23 (584)	23-1/2 (596.9)	210 (5334)	214 (5436)	24 (610)	20 (508)	14 (356)	18 (457)	20-1/2 (520.7)	1-1/8 (28.6)	3	8	8	FLG	16 (406)	10 (35560)	1400 (35560)

**NOTES:** Bolt hols straddle center lines on flanged openings. Legs available at extra cost. Removable bundle. Removable heads. Dimensions are subject to change. If exact dimensions are needed for layout, write for certified drawings. See front page for connection sized and construction materials. Dimensions for above 20" diameter shell furnished upon request. Square feet of heat transfer surface is for heat exchangers with 5/8" O.D. tubing.

**IMPORTANT:** Designate 1 or 2 pass where asteric appears.

**TYPICAL SPECIFICATIONS**

Furnish and install as shown on plans and with manufacturers recommendations; heat exchangers according to the following specifications:

**1. DUTY**

Condenser \_\_\_\_\_ Cooler \_\_\_\_\_  
 Evaporator \_\_\_\_\_ Heater \_\_\_\_\_

**1. OPERATING CONDITIONS**

	Tube Side	Shell Side
a. Fluid Circulated	_____	_____
b. Total Flow	_____	_____
c. Temperature	Inlet _____ Outlet _____	Inlet _____ Outlet _____
d. Heat Load BTU/Hr.	_____	_____
e. Operating Pressure	_____	_____
f. Maximum Pressure Drop	_____	_____
g. Maximum Tube Surface	_____	_____
h. Minimum Shell Diameter	_____	_____

**3. TYPE**

Shell and tube, straight tube fixed sheets \_\_\_\_\_ with \_\_\_\_\_ without shell expansion joint. Equipped with \_\_\_\_\_ cast iron saddles \_\_\_\_\_ steel legs.

**3. MATERIALS**

a. Heads (Bonnet) _____	Channel _____
b. Tube Sheets _____	c. Baffles _____
d. Tubes _____	Wall Thickness _____

**5. CONSTRUCTION\***

a. A manufacturer's data report for pressure vessels, form No. U-1 required by the provisions of the ASME Code Rules, is to be furnished with each unit upon request. This form must be signed by an authorized inspector, holding a National Board Commission, certifying that construction conforms to the latest ASME Code for pressure vessels for:

Shell \_\_\_\_\_ PSIG design pressure at \_\_\_\_\_ F  
 Head \_\_\_\_\_ PSIG design pressure at \_\_\_\_\_ F

as detailed in form No. U-1. The ASME "U" symbol is also to be stamped on the heat exchanger

- b. The manufacturer must be registered with the National Board.
- c. Tube rolling will be controlled for uniform expansion into tube sheets.
- d. Gasket surfaces will be prepared with surface grinder.

**6. MANUFACTURERS**

Exchangers shall be as manufactured by ITT Bell & Gossett with factory No. \_\_\_\_\_ Model No. \_\_\_\_\_ or approved equal.

\*Compliance with this part of the specification will ensure acceptance of the vessel by any state or local jurisdiction in the United States

DESIGN PRESSURES--ASME CONSTRUCTION  
CAST IRON & BRASS UNITS

Shell Diameter	Tube Passes	Design Pressures * Tube & Shell Sides		Max. Temp. Av. of Tube & Shell Sides	
		Working	Test	Cast Iron	Brass
6	1 & 2	150 PSI	300 PSI	375 °F	300 °F
8	1	125 PSI	250 PSI	375 °F	300 °F
8	2	150 PSI	300 PSI	375 °F	300 °F
10	1 & 2	125 PSI	250 PSI	375 °F	300 °F
12	1 & 2	125 PSI	250 PSI	375 °F	300 °F
14	1 & 2	150 PSI	300 PSI	375 °F	300 °F
16	1 & 2	150 PSI	300 PSI	375 °F	300 °F
18	1 & 2	150 PSI	300 PSI	375 °F	300 °F
20	1	125 PSI	250 PSI	375 °F	300 °F
20	2	150 PSI	300 PSI	375 °F	300 °F

\* For Pressures higher than shown, special heads are required. Consult B & G Representative for specifications and dimensions.

MATERIALS

Part	Standard Cast Iron Unit	Brass Unit	Other Available Materials
Shell	Steel	Steel	#304SS or #316SS
Head	Cast Iron	Cast brass**	Fabricated Steel, 90/10 Cu-Ni, #304SS or #316SS.Cast #316SS
Tubes	5/8" O.D. Cooper or Steel	5/8" O.D. Cooper	3/4" O.D.Steel, Cooper or 90/10Cu-Ni, 5/8"O.D. or 3/4" O.D.#304SS, #316SS or Admiralty
Tubesheets	Steel	Rolled Naval Brass	#304SS, 16SS or 90/10Cu-Ni
Baffles	Steel	Steel	#304SS, #316SS or Brass
Tie Rods & Spacers	Steel	Steel	#304SS, #316SS or Brass
Nuts & Bolts	Steel	Steel	-

\*The dimensions on this Submittal cannot be used with fabricated head. When needed please consult the factory for exact dimensional prints.

A 150 PSI flanged cast iron bonnet head is available for O C 10" & 12"-2 Pass.

\*\*Available only in two pass tubeside constructu=ion on O C 10" and O C 12" diameters.

\*\*\*Cast #316SS flanged heads are available in O C 6" and 8" in one pass and O C 10", O C 12" and O C 14" in one and two pass.

Xylem Inc.  
8200 N. Austin Avenue  
Morton Grove, IL 60053  
Phone: (847)966-3700  
Fax: (847)965-8379  
www.bellgossett.com

