



# Pump Rental & Services

TRUSTED SOLUTIONS FOR ANY DEWATERING NEED

**xylem**  
Let's Solve Water

# Whatever the Challenge, Xylem Has the Rental Solution



Every day we solve water for our construction, mining, municipal, and industrial customers across the Middle East and around the world. By partnering with Xylem, you can rent best-in-class pumping equipment, without capital expenditures. Plus, you gain access to our skilled engineers, product experts, and service technicians who will keep your operations running.

## Our Value

- Unmatched Expertise
- Global Experience Delivered Locally
- Always On and Close By
- True Business Partners Who Understand Your Needs
- Right Pumps and Equipment for the Job

## Why Rent?

- Renting pumping solutions allows you to focus on your core business.
- Scale up your existing fleet without capex investment.
- Pay only for the equipment and services you need, when you need it.
- Eliminate costs associated with maintaining and storing equipment you own.



# Reasons to Rent from Xylem

Get fast access to regional engineering and application expertise, and our broad range of Godwin and Flygt pumps.

## 1 GET IT RIGHT EVERY TIME

- Unlike most, we design, build, test, and rent our own equipment. Our deep knowledge of the product means we'll always select and apply the right solution for your needs.
- With over 100 years of heritage behind both our Godwin and Flygt brands, you can trust us to solve your most complex and urgent dewatering needs.

## 2 MAXIMIZE PRODUCTIVITY

- Access to the world's largest pump rental fleet means you will have equipment when you need it.
- 24/7 delivery and service keeps your operations running smoothly and efficiently.

## 3 GAIN COST CONTROL

- Get your application sized correctly the first time so you don't pay for a job twice.
- Our experts will analyze your job's operating conditions and select the most cost efficient solution from our broad range of diesel or electric driven pumps.



## Contact Us Today!

Gain immediate access to our people and products 24/7.

Tel: 800-PUMPHIRE (7867 4473)  
[Xylem.com/MEA](http://Xylem.com/MEA)

**RENT  
FROM  
XYLEM**

# Get the Right Pump and Accessories for Your Job

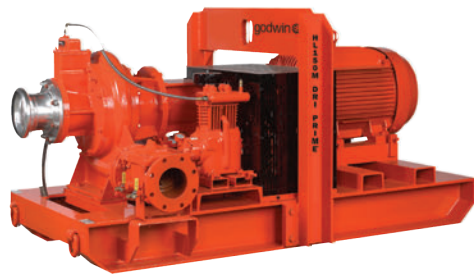
## Electric Pumps

---



### ELECTRIC SUBMERSIBLE PUMPS

Flygt electric submersible pumps move water, sludge, sewage, and slurry.



### ELECTRIC AUTOMATIC SELF-PRIMING PUMPS

All Godwin Dri-Prime automatic self-priming pumps are available with electric drive motors.



## Nobody Does Dewatering Better

Whether you're pumping clean water, sewage, sludge, slurry, or liquid with extreme pH levels, we have the pump that matches your requirements with reliability and performance that's second to none.

Xylem is the world leader in manufacturing tough, portable and reliable pumps for rental projects. Our broad range of Godwin and Flygt pumping equipment, combined with extensive application experience, means that you get the right solution to meet your specific needs.



## Diesel Pumps



### DIESEL AUTOMATIC SELF-PRIMING PUMPS

Godwin Dri-Prime automatic self-priming pumps handle high-volume and high-discharge heads. Ideal for site drainage, sewer bypass, and industrial applications.



### DIESEL HYDRAULIC SUBMERSIBLE PUMPS

Godwin Heidra hydraulic submersible pumps for general duty in dewatering, sewage, and sludge applications.



### MONITORING & CONTROL EQUIPMENT

- Remote Monitoring Systems
- Level & Pressure Sensors
- Flow Meters
- VFDs



### ACCESSORIES

- HDPE Pipe & Fittings
- QD Pipe & Fittings
- Layflat Hose
- Pump Rafts
- Road Ramps

Generators  
are available  
immediately



Environmentally friendly diesel engines available, including Tier 3.

# Xylem Offers a Broad Range of Pumping Solutions

## ONSITE SERVICES:

- Installation & Commissioning
- Monitoring & Supervision
- Repair & Maintenance
- Technical Support



INSTALLATION & COMMISSIONING



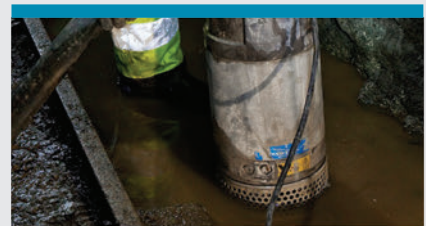
## Construction & Tunneling

- Face dewatering
- Jetting
- Site drainage
- Stream diversions
- Sewer bypass
- Wellpoint dewatering



## Industrial

- Hydrostatic testing
- Lift station backup pumping
- Process water supply
- Sludge removal
- Slurry tailings removal
- Temporary fire pumps



## Mining & Aggregates

- Face and stage dewatering
- Open pit dewatering
- Process water supply
- Slurry tailings removal
- Underground mine drainage



## Municipal

- Floodwater removal
- Lift station backup pumping
- Sewer bypass



## Marine

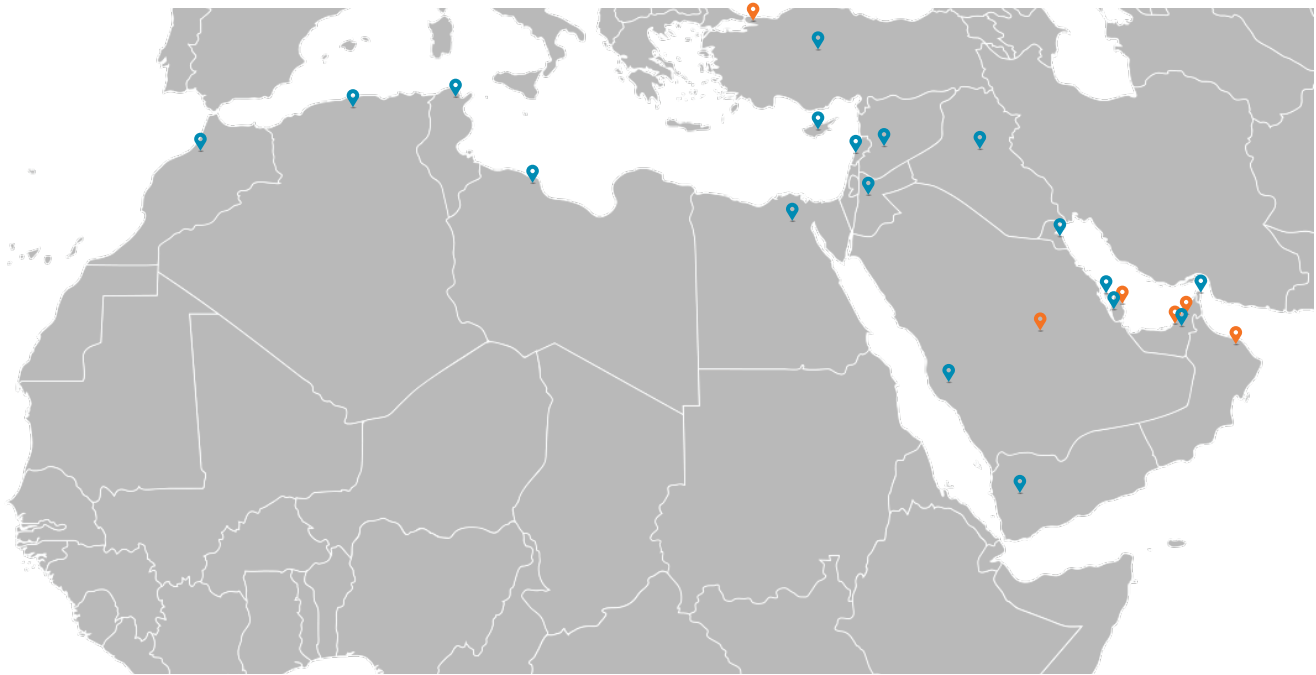
- Barge Ballasting
- Jetting
- Temporary fire pumps
- Vessel dewatering



## Oil & Gas

- Drill rig water supply
- Hydrostatic testing
- Pipeline pigging
- Product transfers in refineries
- Stream diversions

# Rental Locations - MENA



 Xylem

 Distributors



## Xylem's Pump Rental & Services are Part of TotalCare

A comprehensive, integrated portfolio of services designed to ensure that your water and wastewater equipment keeps running at its best. Our team of knowledgeable and highly skilled technicians pride themselves on their ability to help our customers optimize their operations to maximize uptime and productivity.



24/7  
Service



Branch  
Capabilities



Design &  
Consultancy



Installation &  
Commissioning



Maintenance  
Contracts



Monitoring &  
Supervision



Parts &  
Logistics



Pump Rental  
& Services



Repair &  
Maintenance



Training &  
Technical

Always on and close by

**24/7**

PUMP RENTAL & SERVICES  
800 PUMPHIRE  
(7867 4473)

# Xylem |'zīləm|

- 1) The tissue in plants that brings water upward from the roots;
- 2) a leading global water technology company.

We're a global team unified in a common purpose: creating innovative solutions to meet our world's water needs. Developing new technologies that will improve the way water is used, conserved, and re-used in the future is central to our work. We move, treat, analyze, and return water to the environment, and we help people use water efficiently, in their homes, buildings, factories and farms. In more than 150 countries, we have strong, long-standing relationships with customers who know us for our powerful combination of leading product brands and applications expertise, backed by a legacy of innovation.

**For more information on how Xylem can help you, go to [www.xylem.com/dewatering](http://www.xylem.com/dewatering)**



Xylem ME Water Eqpt. Trading & Rental  
Unit No: L8402, Plot 599-632  
Jebel Ali Industrial Area 2  
P.O. Box 667 47, Dubai, U.A.E.  
Tel: 800-PUMPHIRE (800-78674473)  
[xylem.com/MEA](http://xylem.com/MEA)



Xylem, Flygt, Godwin, Dri-Prime, and Heidra are registered trademarks of Xylem Inc. or one of its subsidiaries.  
© 2017 Xylem, Inc. MENA Version 1.0 February 2017.