



# Godwin NC80 Rig Pump

SMALL/COMPACT, THE MOST RELIABLE AND SAFE OPTION  
TO DEWATER YOUR MINE

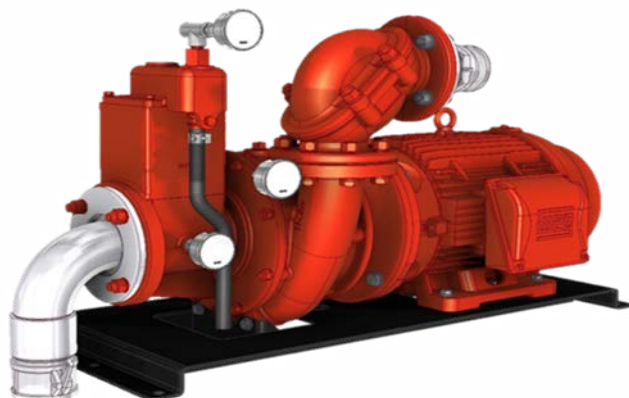
godwin   
a xylem brand

# NC80 Dri-Prime® Pump

The Godwin Dri-Prime NC80 pump is an extremely powerful yet compact pump with flow capabilities to 38 L/S and discharge heads to 64 metres.

The NC80 RIG Pump features the unique N-Technology with its innovative self cleaning impeller. Godwin N-Pumps Deliver the highest total efficiency and reduces unplanned maintenance costs.

This makes it an extremely effective pump, suitable for dirty mine water applications including improved performance where shotcrete is utilised.



## Features and Benefits

- Fully automatic priming from dry to 8.5 metres suction lift.
- Godwin Dri-Prime is a continuously operated Venturi air ejector priming device which requires no periodic adjustment or control.
- Dry-running high pressure oil bath mechanical seal, with high abrasion resistant silicon carbide faces.
- A Close-coupled centrifugal pump with Godwin Dri-Prime system mounted to a electric drive.
- Incorporates high efficiency N-Pump technology.
- Compact - dry/machine mounted



## Specifications

<b>Max capacity</b>	38 L/S
<b>Max Head</b>	64 metres
<b>Impeller diameter</b>	214 mm
<b>Max operating temp</b>	80 °C
<b>Suction connection</b>	3" camlock
<b>Discharge connection</b>	3" camlock
<b>Motor</b>	22 kW



## Pump Construction

<b>Housing</b>	Cast iron
<b>Impellor</b>	Hard iron
<b>Rear wear plate</b>	Cast iron
<b>Insert/front wear plate</b>	Hard iron
<b>Shaft</b>	316 stainless
<b>Non-return valve</b>	Cast iron
<b>Mechanical seal carbide</b>	Silicon

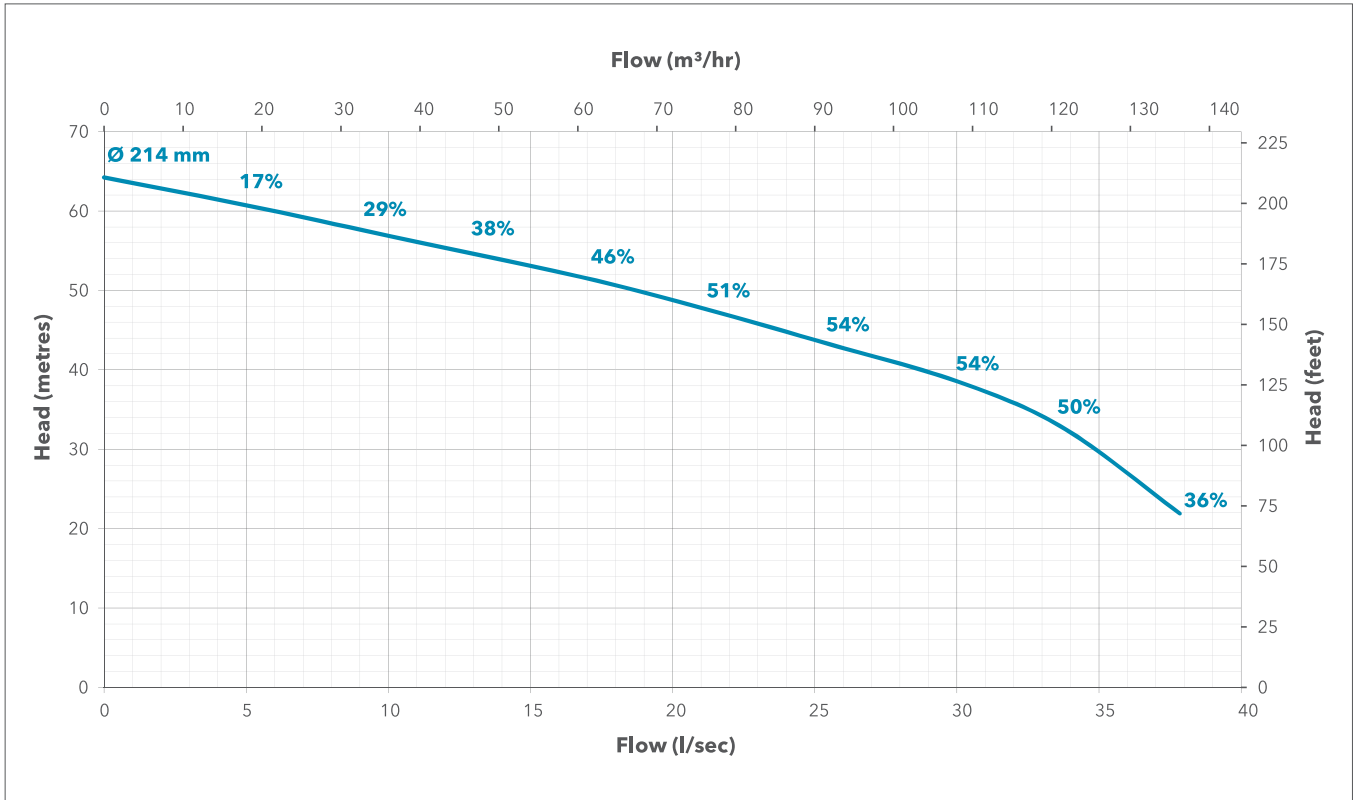
*Alternate materials available upon request*



# Performance Curve

<b>Pump Type</b>	NC80
<b>Curve No</b>	95-1808-2098-2950
<b>Branch Sizes</b>	100 x 80 mm

<b>Speed</b>	2950 rpm
<b>Impeller Diameter</b>	214 mm



Installed in a Sandvik DD421 Jumbo

# What can Xylem do for you?

We're 12,000 people unified in a common purpose: creating innovative solutions to meet our world's water needs. Developing new technologies that will improve the way water is used, conserved, and re-used in the future is central to our work. We move, treat, analyse, and return water to the environment, and we help people use water efficiently, in their homes, buildings, factories and farms. In more than 150 countries, we have strong, long-standing relationships with customers who know us for our powerful combination of leading product brands and applications expertise, backed by a legacy of innovation.

For more information on how Xylem can help you, go to [www.xylemwatersolutions.com/au](http://www.xylemwatersolutions.com/au)



## **Australia**

131914

Adelaide | Brisbane | Darwin | Devonport | Kalgoorlie | Karratha | Mackay  
Melbourne | Mt Isa | Newcastle | Orange | Perth | Sydney | Townsville

## **New Zealand**

0800 331 914

Auckland | Christchurch | Wellington