

CURVES

C750 R3

Lineshaft and Submersible Turbine Pump Curves

750 RPM CURVES - 50 CYCLE PERFORMANCE

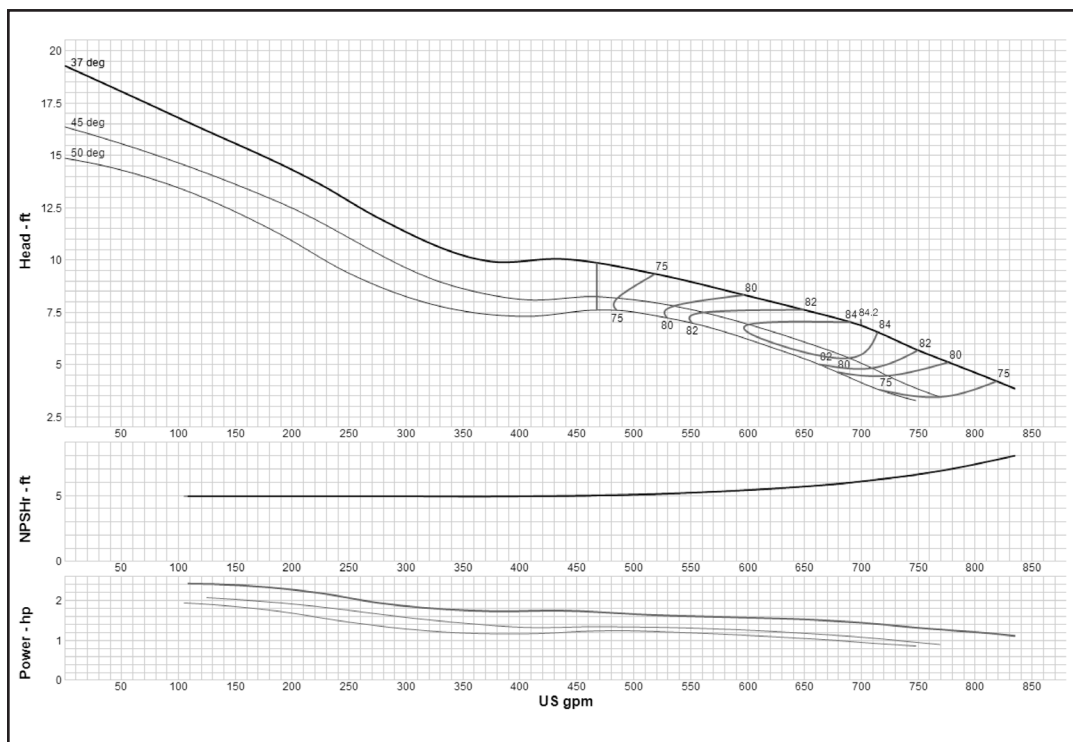
 **GOULDS**
WATER TECHNOLOGY
a xylem brand

INDEX – 50 CYCLE PERFORMANCE – 750 RPM

Model	RPM	Curve Number	Date Issued
6MO	735	E5812MBPC1	September 1, 2017
10MO	735	E5812MCPC1	September 1, 2017
12MLO	735	E5812MBPC1	September 1, 2017
12MMO	735	E5812MCPC1	September 1, 2017
20EHC	735	E5820EAPC1	July 1, 2014
20EHC ADD	735	E5820EAPC1	July 1, 2014
20ELC	735	E5820EDPC1	July 1, 2014
20GHC	735	E5820GBPC1	July 1, 2014
20GHC ADD	735	E5820GBPC1	July 1, 2014
20GLC	735	E5820GCPC1	July 1, 2014
20GLXC	735	E5820GLPC1	July 1, 2014
20RCHC	735	E5820CCPC1	July 1, 2014
20RCLC	735	E5820CFPC1	July 1, 2014
24CHC	735	E5824CCPC1	July 1, 2014
24CLC	735	E5824CFPC1	July 1, 2014
24DMC	735	E5824DHPC1	July 1, 2014
24DMC ADD	735	E5824DHPC1	July 1, 2014
24EHC	735	E5824EAPC1	July 1, 2014
24EHC ADD	735	E5824EAPC1	July 1, 2014
24ELC	735	E5824EDPC1	July 1, 2014
24FHC	735	E5824FAPC1	September 1, 2017
24GHC	735	E5824GBPC1	July 1, 2014
24GHC ADD	735	E5824GBPC1	July 1, 2014
24GHXC	735	E5824GGPC1	July 1, 2014
24GLC	735	E5824GCPC1	September 1, 2017
26GHC	735	E5826GBPC1	September 1, 2017
26GHC ADD	735	E5826GBPC1	July 1, 2014
26GHXC	735	E5826GGPC1	July 1, 2014
28BHC	735	E5828BBPC1	July 1, 2014
28BLC	735	E5828BEPC1	July 1, 2014
28GHC	735	E5828GBPC1	July 1, 2014
30BHC	735	E5830BBPC1	July 1, 2014
30BHC ADD	735	E5830BBPC1	July 1, 2014

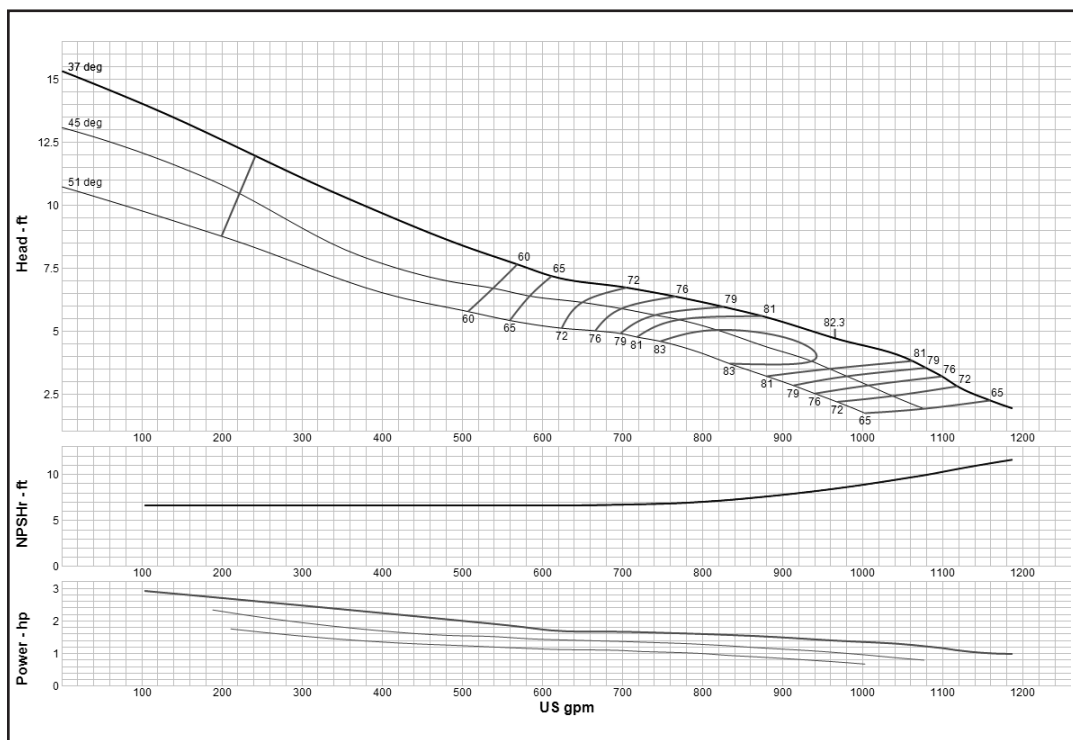
Turbine

MODEL 6MO (Effective September 1, 2017)



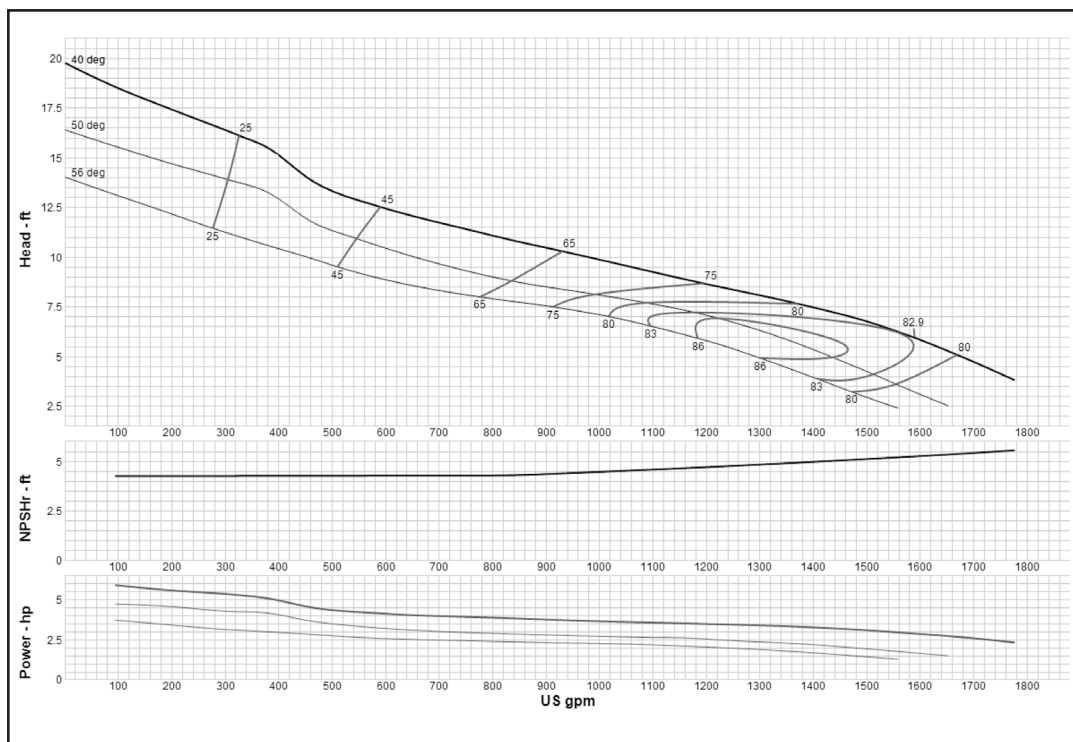
Curve No. E5812MBPC1	
Model	6MO
RPM	735
EFFICIENCY CORRECTION	
1-STAGE	0
2-STAGE	N/A
3-STAGE	N/A
4-STAGE	N/A
Impeller	OPEN
Ns =	7186
K =	31.5
Bowl O. D.	18.00 in
Bowl Lateral	0.44
Max. PSI	160
Disch size	12", 14"
TURBINE OPERATIONS	
Lubbock, Texas	
BOWL PERFORMANCE CURVE BASED ON PUMPING CLEAR, NON-AERATED WATER. RATED POINT ONLY IS GUARANTEED. CURVES REPRESENT SINGLE STAGE PERFORMANCE BASED ON TEST OF MULTI-STAGE BOWL ASSEMBLY. EFFICIENCY CORRECTION APPLIES TO HEAD, FLOW AND HORSEPOWER FOR LESSER STAGES.	

MODEL 10MO (Effective September 1, 2017)



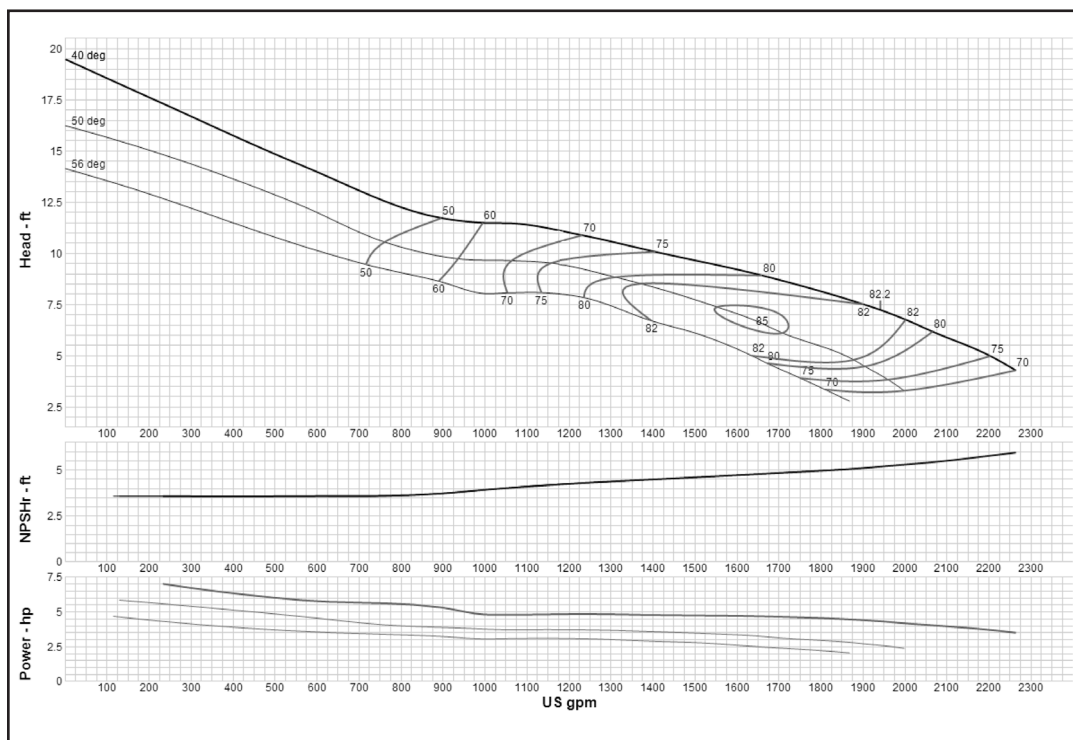
Curve No. E5812MCPC1	
Model	10MO
RPM	735
EFFICIENCY CORRECTION	
1-STAGE	0
2-STAGE	N/A
3-STAGE	N/A
4-STAGE	N/A
Impeller	OPEN
Ns =	6663
K =	31.3
Bowl O. D.	18.00 in
Bowl Lateral	0.44
Max. PSI	160
Disch size	12", 14"
TURBINE OPERATIONS	
Lubbock, Texas	
BOWL PERFORMANCE CURVE BASED ON PUMPING CLEAR, NON-AERATED WATER. RATED POINT ONLY IS GUARANTEED. CURVES REPRESENT SINGLE STAGE PERFORMANCE BASED ON TEST OF MULTI-STAGE BOWL ASSEMBLY. EFFICIENCY CORRECTION APPLIES TO HEAD, FLOW AND HORSEPOWER FOR LESSER STAGES.	

MODEL 12MLO (Effective September 1, 2017)



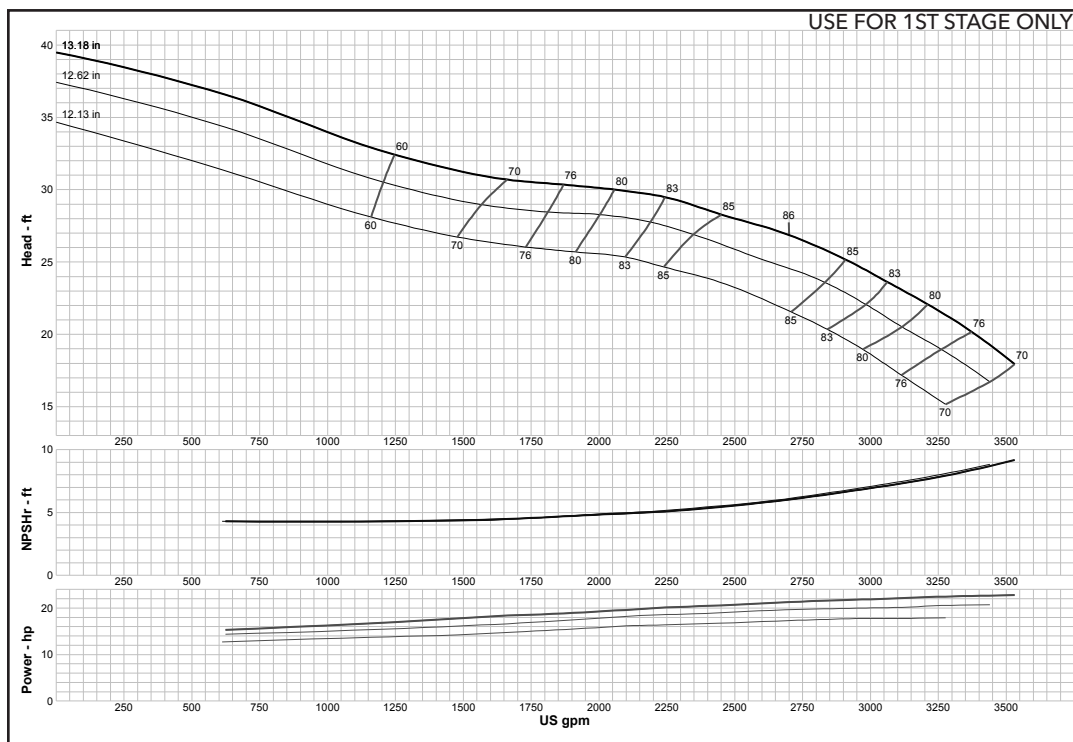
Curve No. E5812MBPC1	
Model	12MLO
RPM	735
EFFICIENCY CORRECTION	
1-STAGE	0
2-STAGE	N/A
3-STAGE	N/A
4-STAGE	N/A
Impeller	OPEN
Ns =	7186
K =	31.5
Bowl O. D.	18.00 in
Bowl Lateral	0.44
Max. PSI	160
Disch size	12", 14"
TURBINE OPERATIONS	
Lubbock, Texas	
BOWL PERFORMANCE CURVE BASED ON PUMPING CLEAR, NON-AERATED WATER. RATED POINT ONLY IS GUARANTEED. CURVES REPRESENT SINGLE STAGE PERFORMANCE BASED ON TEST OF MULTI-STAGE BOWL ASSEMBLY. EFFICIENCY CORRECTION APPLIES TO HEAD, FLOW AND HORSEPOWER FOR LESSER STAGES.	

MODEL 12MMO (Effective September 1, 2017)



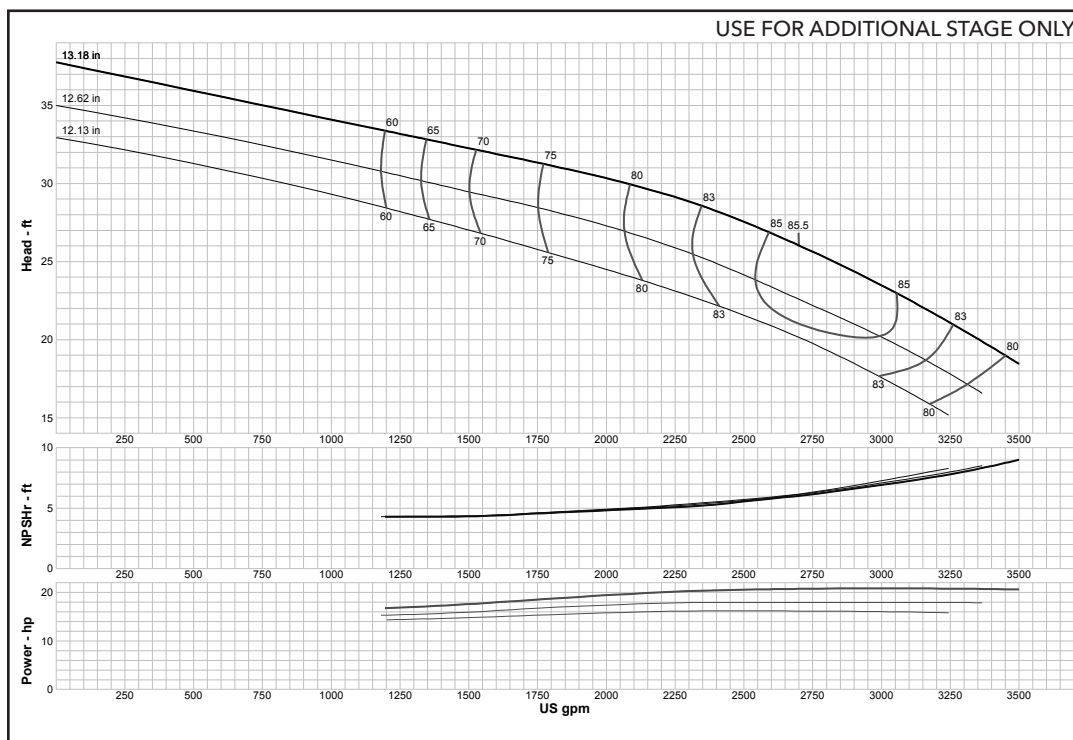
Curve No. E5812MCPC1	
Model	12MMO
RPM	735
EFFICIENCY CORRECTION	
1-STAGE	0
2-STAGE	N/A
3-STAGE	N/A
4-STAGE	N/A
Impeller	OPEN
Ns =	6663
K =	31.3
Bowl O. D.	18.00 in
Bowl Lateral	0.44
Max. PSI	160
Disch size	12", 14"
TURBINE OPERATIONS	
Lubbock, Texas	
BOWL PERFORMANCE CURVE BASED ON PUMPING CLEAR, NON-AERATED WATER. RATED POINT ONLY IS GUARANTEED. CURVES REPRESENT SINGLE STAGE PERFORMANCE BASED ON TEST OF MULTI-STAGE BOWL ASSEMBLY. EFFICIENCY CORRECTION APPLIES TO HEAD, FLOW AND HORSEPOWER FOR LESSER STAGES.	

MODEL 20EHC (Effective July 1, 2014)



Curve No. E5820EAPC1	
Model	20EHC
RPM	735
EFFICIENCY CORRECTION	
1-STAGE	0
2-STAGE	0
3-STAGE	0
4-STAGE	0
Impeller	ENCLOSED
Ns =	3233
K =	36
Bowl O. D.	18.94 in
Bowl Lateral	0.88
Max. PSI	310
Disch size	--
TURBINE OPERATIONS	
Lubbock, Texas	
BOWL PERFORMANCE CURVE BASED ON PUMPING CLEAR, NON-AERATED WATER. RATED POINT ONLY IS GUARANTEED. CURVES REPRESENT SINGLE STAGE PERFORMANCE BASED ON TEST OF MULTI-STAGE BOWL ASSEMBLY. EFFICIENCY CORRECTION APPLIES TO HEAD, FLOW AND HORSEPOWER FOR LESSER STAGES.	

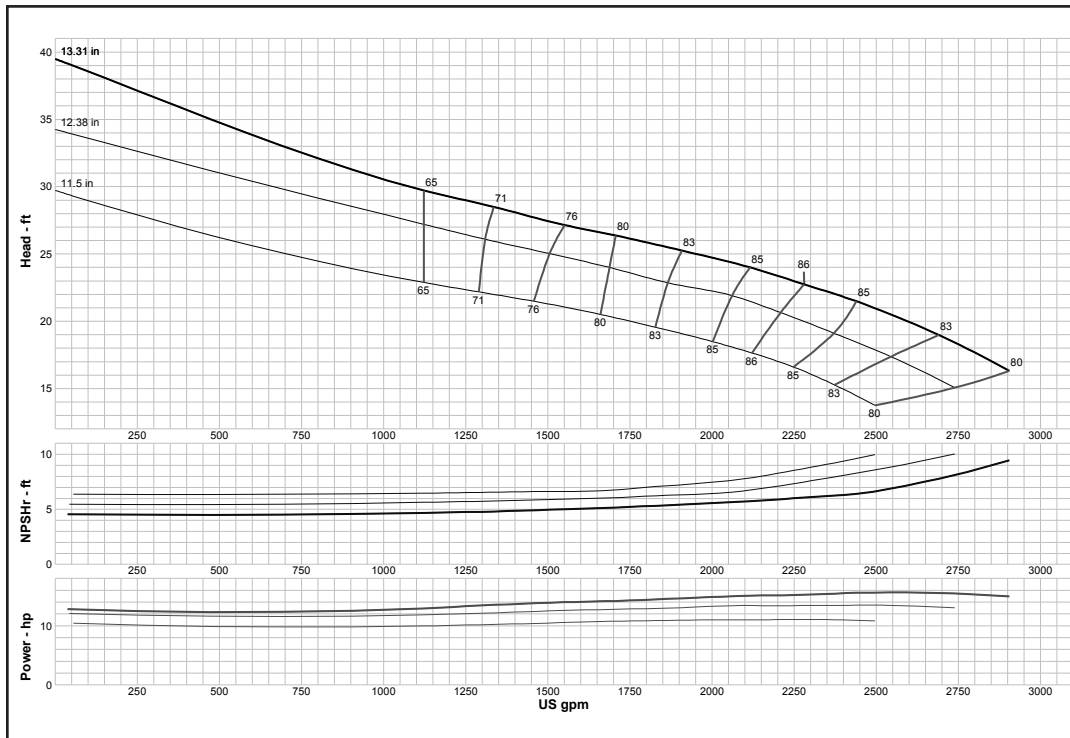
MODEL 20EHC (Effective July 1, 2014)



Curve No. E5820EAPC1	
Model	20EHC
RPM	735
EFFICIENCY CORRECTION	
1-STAGE	0
2-STAGE	0
3-STAGE	0
4-STAGE	0
Impeller	ENCLOSED
Ns =	3233
K =	36
Bowl O. D.	18.94 in
Bowl Lateral	0.88
Max. PSI	310
Disch size	--
TURBINE OPERATIONS	
Lubbock, Texas	
BOWL PERFORMANCE CURVE BASED ON PUMPING CLEAR, NON-AERATED WATER. RATED POINT ONLY IS GUARANTEED. CURVES REPRESENT SINGLE STAGE PERFORMANCE BASED ON TEST OF MULTI-STAGE BOWL ASSEMBLY. EFFICIENCY CORRECTION APPLIES TO HEAD, FLOW AND HORSEPOWER FOR LESSER STAGES.	

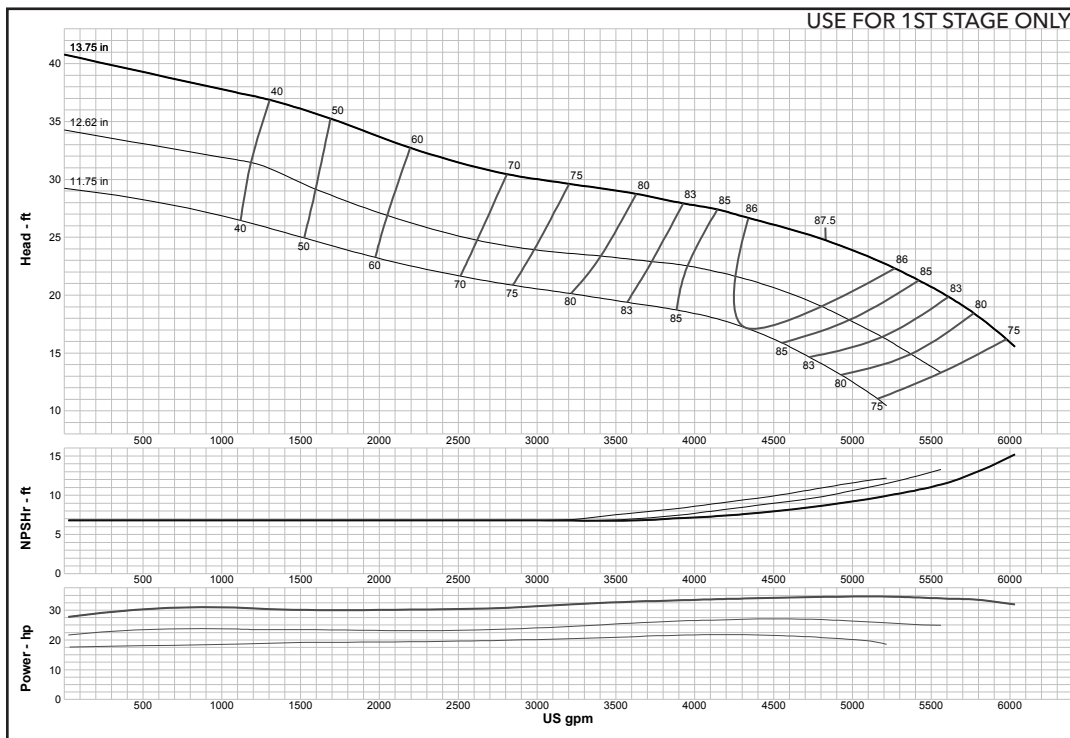
Turbine

MODEL 20ELC (Effective July 1, 2014)



Curve No. E5820EDPC1	
Model	20ELC
RPM	735
EFFICIENCY CORRECTION	
1-STAGE	-3
2-STAGE	-1
3-STAGE	0
4-STAGE	0
Impeller	ENCLOSED
Ns =	3371
K =	31
Bowl O. D.	18.94 in
Bowl Lateral	0.88
Max. PSI	310
Disch size	--
TURBINE OPERATIONS	
Lubbock, Texas	
BOWL PERFORMANCE CURVE BASED ON PUMPING CLEAR, NON-AERATED WATER. RATED POINT ONLY IS GUARANTEED. CURVES REPRESENT SINGLE STAGE PERFORMANCE BASED ON TEST OF MULTI-STAGE BOWL ASSEMBLY. EFFICIENCY CORRECTION APPLIES TO HEAD, FLOW AND HORSEPOWER FOR LESSER STAGES.	

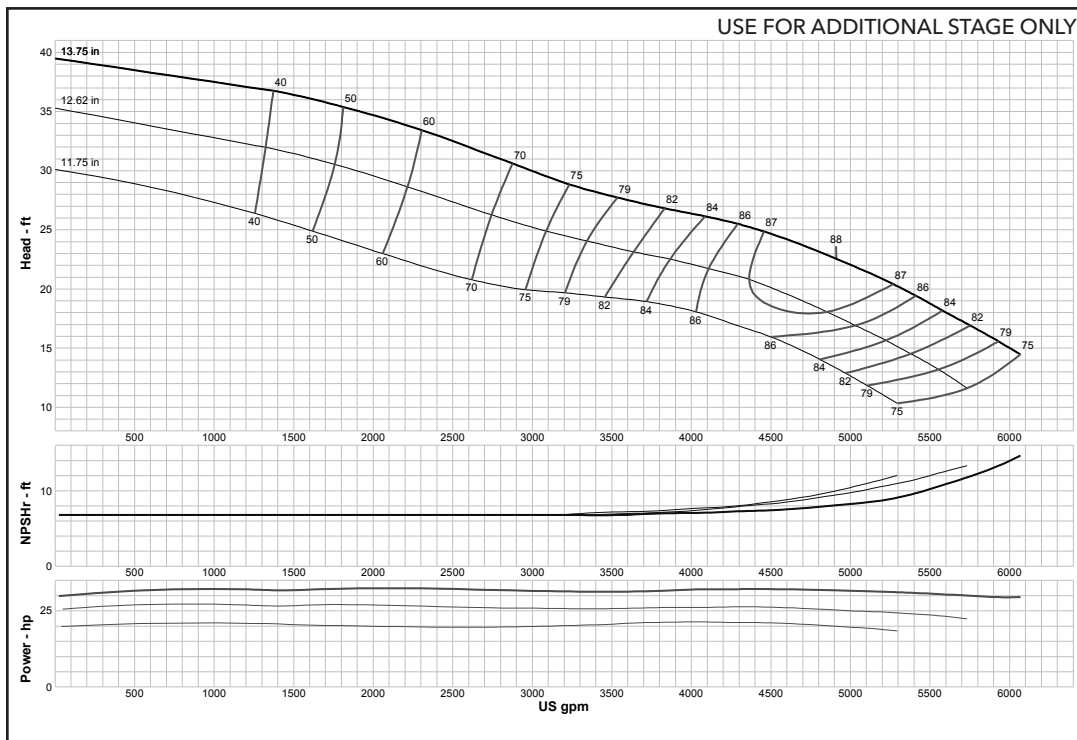
MODEL 20GHC (Effective July 1, 2014)



Curve No. E5820GBPC1	
Model	20GHC
RPM	735
EFFICIENCY CORRECTION	
1-STAGE	0
2-STAGE	0
3-STAGE	0
4-STAGE	0
Impeller	ENCLOSED
Ns =	4970
K =	41.2
Bowl O. D.	20.75 in
Bowl Lateral	1.41
Max. PSI	270
Disch size	--
TURBINE OPERATIONS	
Lubbock, Texas	
BOWL PERFORMANCE CURVE BASED ON PUMPING CLEAR, NON-AERATED WATER. RATED POINT ONLY IS GUARANTEED. CURVES REPRESENT SINGLE STAGE PERFORMANCE BASED ON TEST OF MULTI-STAGE BOWL ASSEMBLY. EFFICIENCY CORRECTION APPLIES TO HEAD, FLOW AND HORSEPOWER FOR LESSER STAGES.	

Turbine

MODEL 20GHC (Effective July 1, 2014)



Curve No. E5820GBPC1

Model 20GHC

RPM 735

EFFICIENCY CORRECTION

1-STAGE	0
2-STAGE	0
3-STAGE	0
4-STAGE	0

Impeller **ENCLOSED**

Ns = **4970**

K = **41.2**

Bowl O. D. 20.75 in

Bowl Lateral 1.41

Max. PSI 270

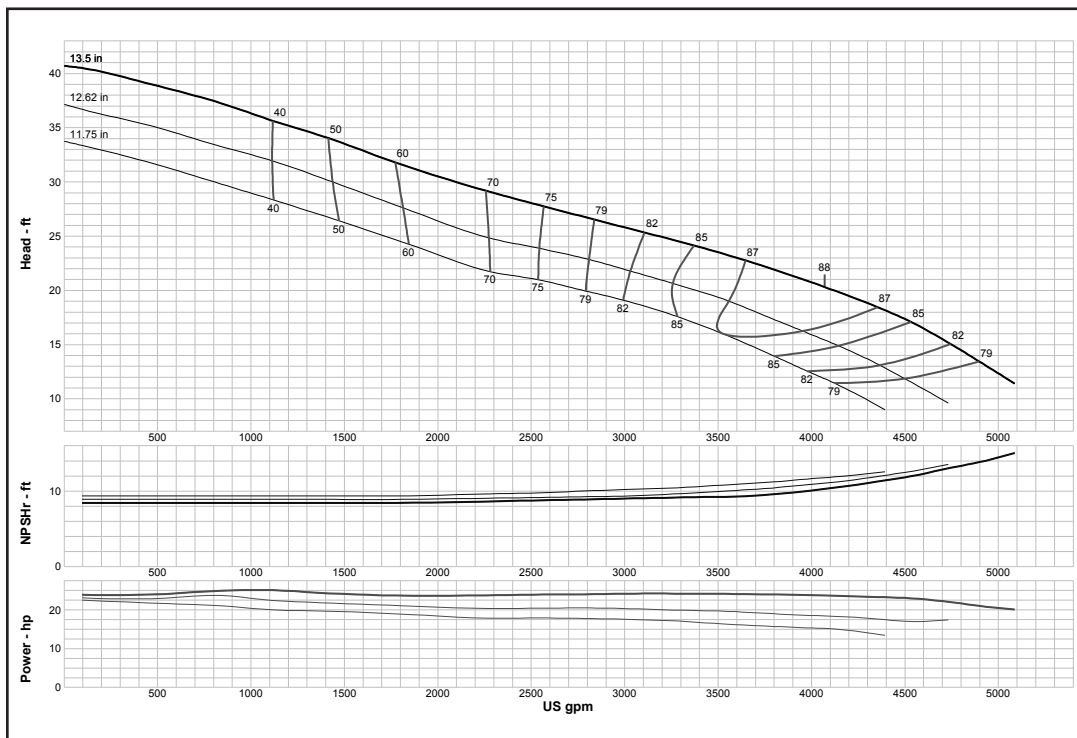
Disch size --

TURBINE OPERATIONS

Lubbock, Texas

BOWL PERFORMANCE CURVE BASED ON PUMPING CLEAR, NON-AERATED WATER. RATED POINT ONLY IS GUARANTEED. CURVES REPRESENT SINGLE STAGE PERFORMANCE BASED ON TEST OF MULTI-STAGE BOWL ASSEMBLY. EFFICIENCY CORRECTION APPLIES TO HEAD, FLOW AND HORSEPOWER FOR LESSER STAGES.

MODEL 20GLC (Effective July 1, 2014)



Curve No. E5820GCPC1

Model 20GLC

RPM 735

EFFICIENCY CORRECTION

1-STAGE	-1
2-STAGE	0
3-STAGE	0
4-STAGE	0

Impeller **ENCLOSED**

Ns = **4807**

K = **45**

Bowl O. D. 20.75 in

Bowl Lateral 1.41

Max. PSI 270

Disch size --

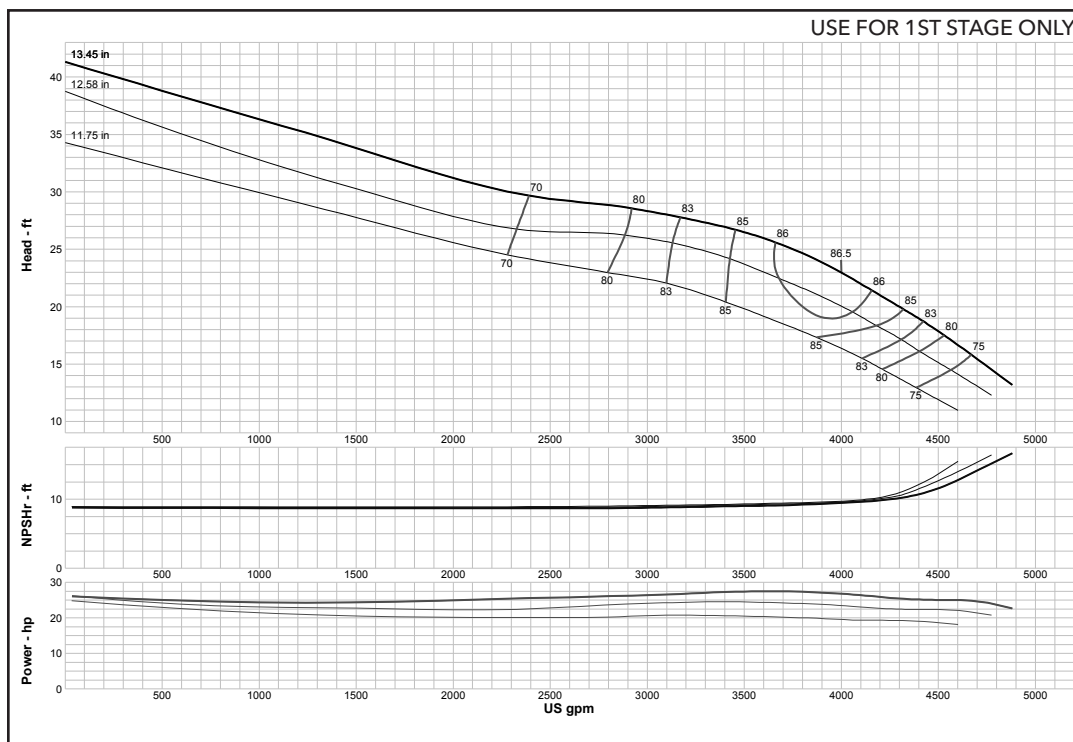
TURBINE OPERATIONS

Lubbock, Texas

BOWL PERFORMANCE CURVE BASED ON PUMPING CLEAR, NON-AERATED WATER. RATED POINT ONLY IS GUARANTEED. CURVES REPRESENT SINGLE STAGE PERFORMANCE BASED ON TEST OF MULTI-STAGE BOWL ASSEMBLY. EFFICIENCY CORRECTION APPLIES TO HEAD, FLOW AND HORSEPOWER FOR LESSER STAGES.

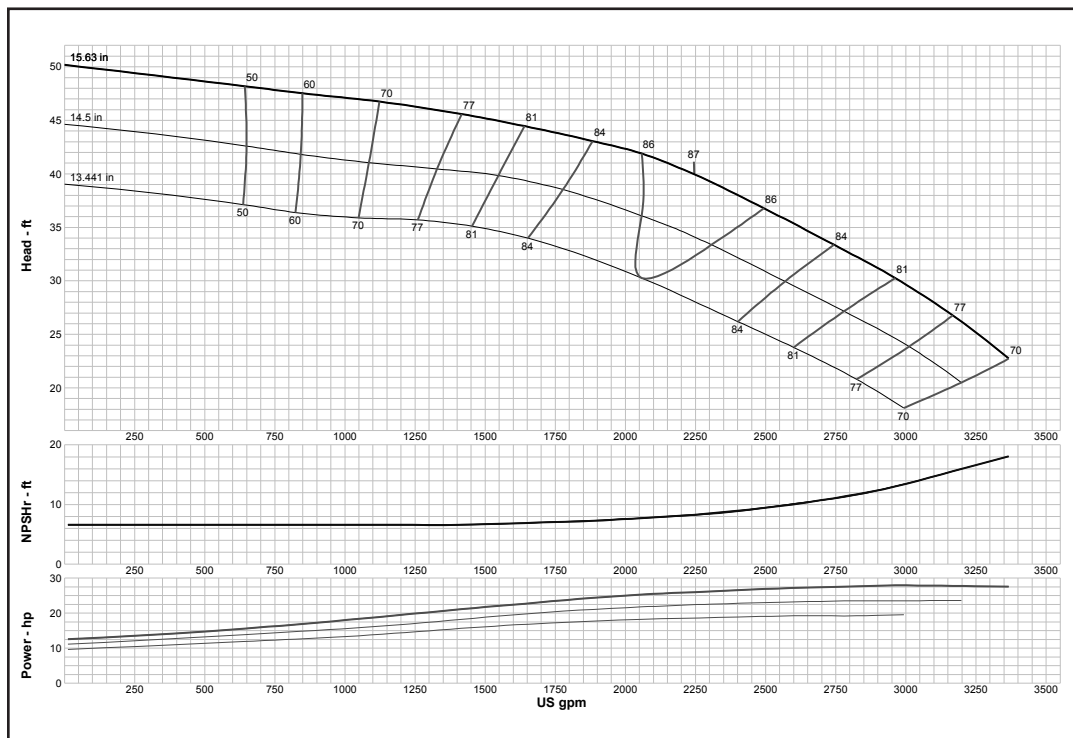
Turbine

MODEL 20GLXC (Effective July 1, 2014)



Curve No. E5820GLPC1	
Model	20GLXC
RPM	735
EFFICIENCY CORRECTION	
1-STAGE	0
2-STAGE	0
3-STAGE	0
4-STAGE	0
Impeller	ENCLOSED
Ns =	4345
K =	55.4
Bowl O. D.	20.75 in
Bowl Lateral	1.41
Max. PSI	300
Disch size	--
TURBINE OPERATIONS	
Lubbock, Texas	
BOWL PERFORMANCE CURVE BASED ON PUMPING CLEAR, NON-AERATED WATER. RATED POINT ONLY IS GUARANTEED. CURVES REPRESENT SINGLE STAGE PERFORMANCE BASED ON TEST OF MULTI-STAGE BOWL ASSEMBLY. EFFICIENCY CORRECTION APPLIES TO HEAD, FLOW AND HORSEPOWER FOR LESSER STAGES.	

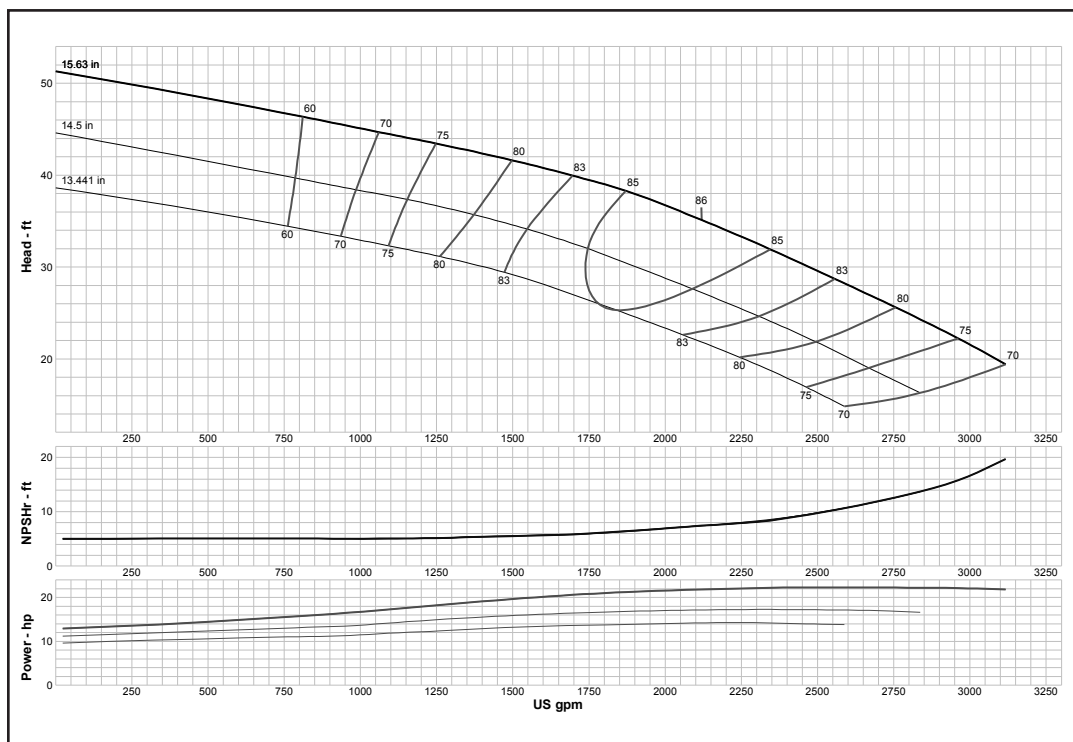
MODEL 20RCHC (Effective July 1, 2014)



Curve No. E5820CCPC1	
Model	20RCHC
RPM	735
EFFICIENCY CORRECTION	
1-STAGE	-1
2-STAGE	0
3-STAGE	0
4-STAGE	0
Impeller	ENCLOSED
Ns =	2190
K =	24
Bowl O. D.	20.50 in
Bowl Lateral	1.12
Max. PSI	400
Disch size	--
TURBINE OPERATIONS	
Lubbock, Texas	
BOWL PERFORMANCE CURVE BASED ON PUMPING CLEAR, NON-AERATED WATER. RATED POINT ONLY IS GUARANTEED. CURVES REPRESENT SINGLE STAGE PERFORMANCE BASED ON TEST OF MULTI-STAGE BOWL ASSEMBLY. EFFICIENCY CORRECTION APPLIES TO HEAD, FLOW AND HORSEPOWER FOR LESSER STAGES.	

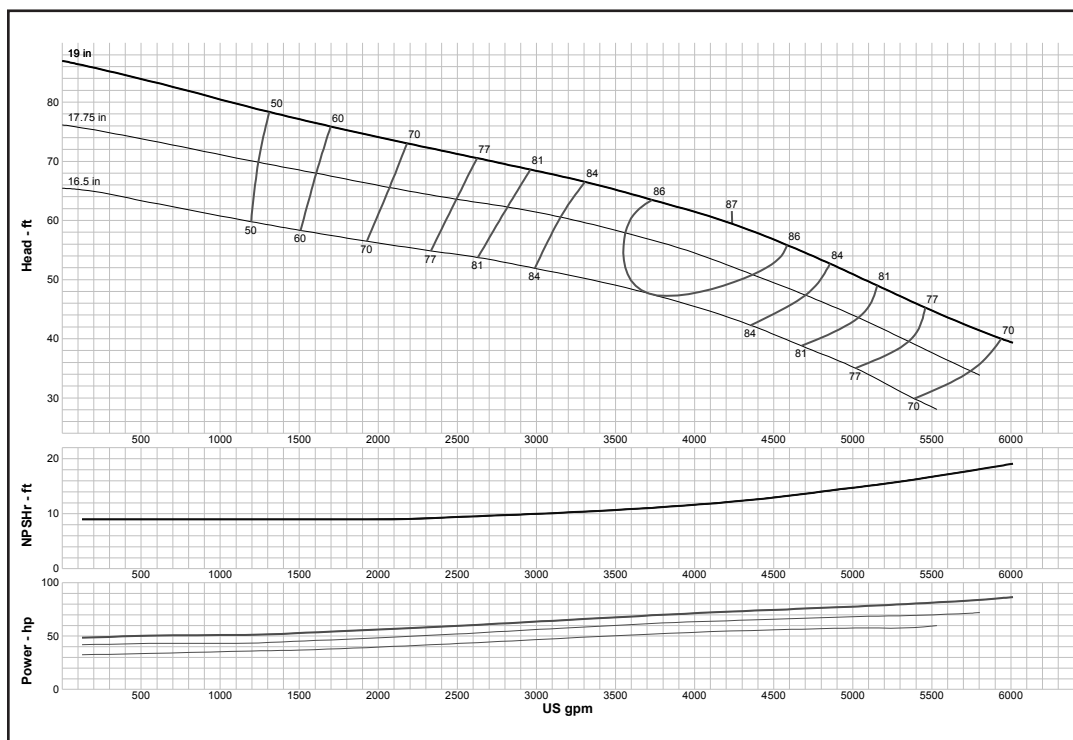
Turbine

MODEL 20RCLC (Effective July 1, 2014)



Curve No. E5820CFPC1	
Model	20RCLC
RPM	735
EFFICIENCY CORRECTION	
1-STAGE	-1
2-STAGE	0
3-STAGE	0
4-STAGE	0
Impeller	ENCLOSED
Ns =	2345
K =	24
Bowl O. D.	20.50 in
Bowl Lateral	1.12
Max. PSI	400
Disch size	--
TURBINE OPERATIONS	
Lubbock, Texas	
BOWL PERFORMANCE CURVE BASED ON PUMPING CLEAR, NON-AERATED WATER. RATED POINT ONLY IS GUARANTEED. CURVES REPRESENT SINGLE STAGE PERFORMANCE BASED ON TEST OF MULTI-STAGE BOWL ASSEMBLY. EFFICIENCY CORRECTION APPLIES TO HEAD, FLOW AND HORSEPOWER FOR LESSER STAGES.	

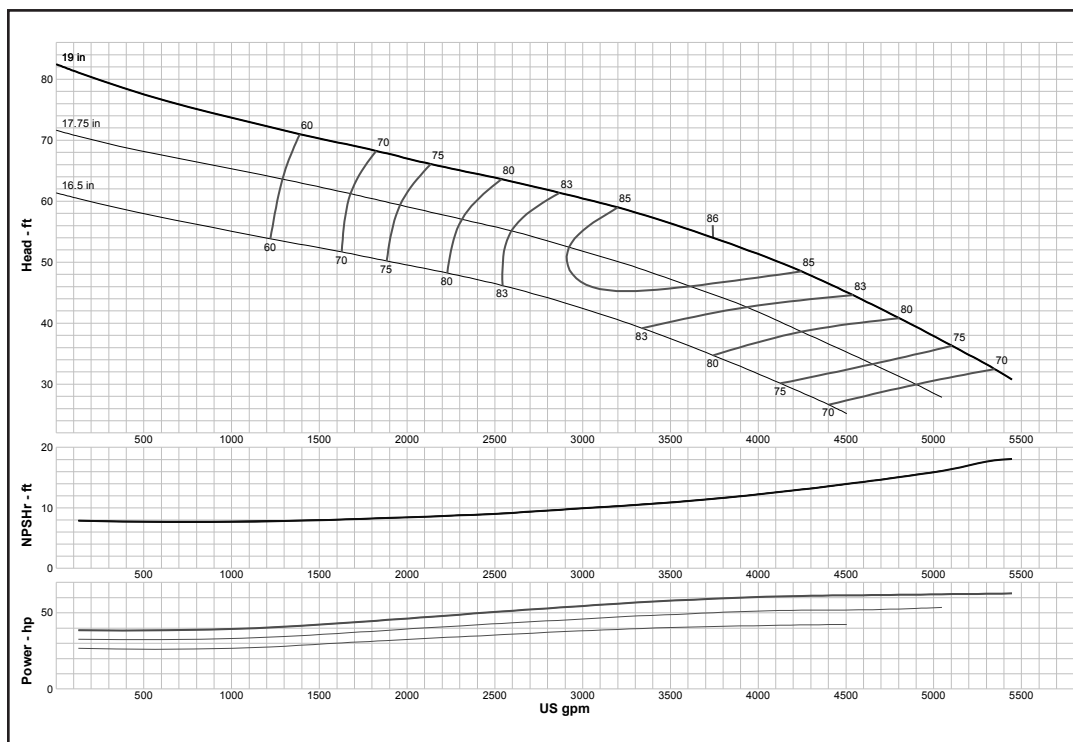
MODEL 24CHC (Effective July 1, 2014)



Curve No. E5824CCPC1	
Model	24CHC
RPM	735
EFFICIENCY CORRECTION	
1-STAGE	-1.5
2-STAGE	0
3-STAGE	0
4-STAGE	0
Impeller	ENCLOSED
Ns =	2232
K =	37.8
Bowl O. D.	25.00 in
Bowl Lateral	0.87
Max. PSI	270
Disch size	--
TURBINE OPERATIONS	
Lubbock, Texas	
BOWL PERFORMANCE CURVE BASED ON PUMPING CLEAR, NON-AERATED WATER. RATED POINT ONLY IS GUARANTEED. CURVES REPRESENT SINGLE STAGE PERFORMANCE BASED ON TEST OF MULTI-STAGE BOWL ASSEMBLY. EFFICIENCY CORRECTION APPLIES TO HEAD, FLOW AND HORSEPOWER FOR LESSER STAGES.	

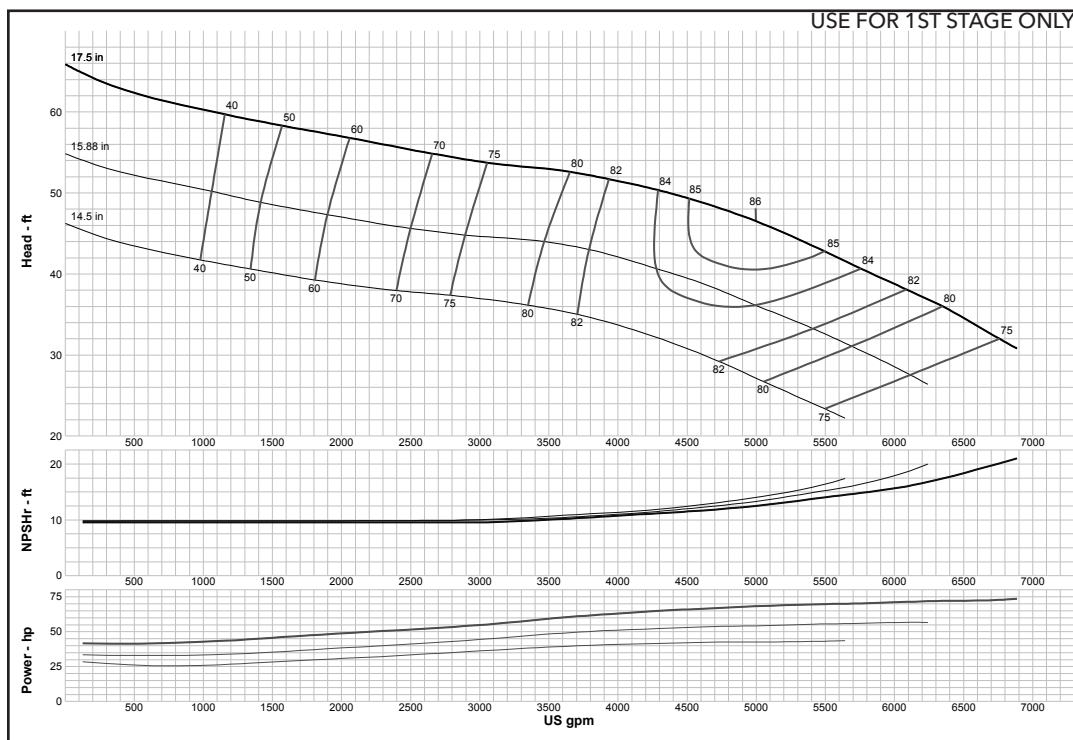
Turbine

MODEL 24CLC (Effective July 1, 2014)



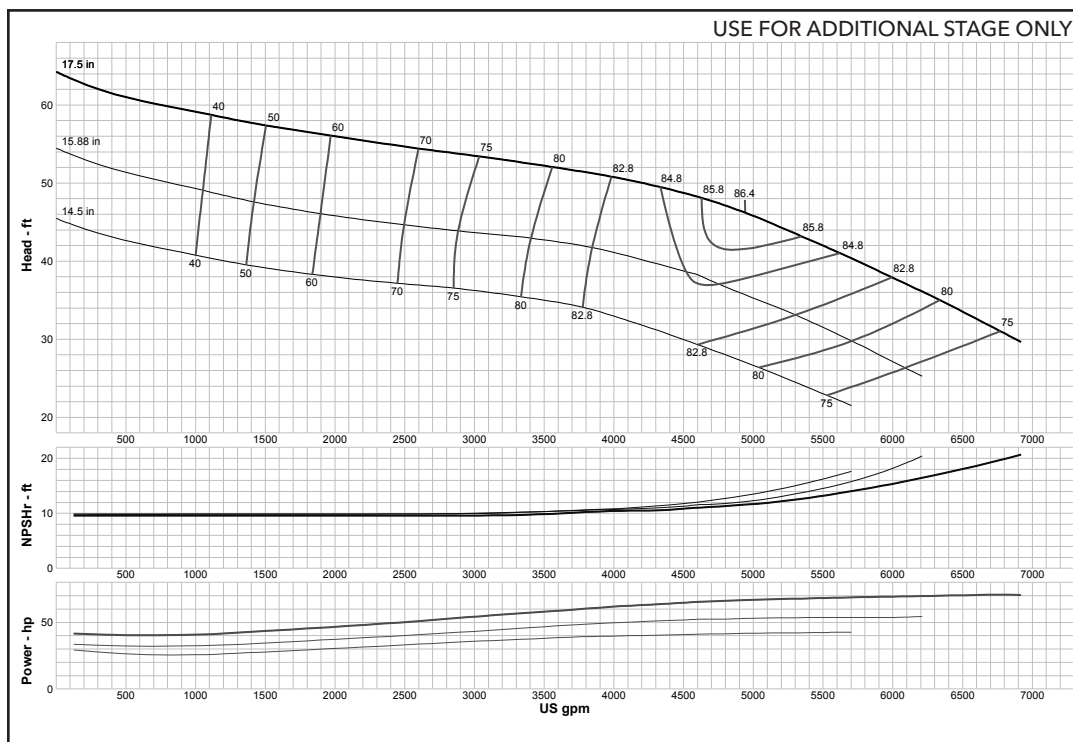
Curve No. E5824CFPC1	
Model	24CLC
RPM	735
EFFICIENCY CORRECTION	
1-STAGE	-1.5
2-STAGE	0
3-STAGE	0
4-STAGE	0
Impeller	ENCLOSED
Ns =	2258
K =	43.2
Bowl O. D.	25.00 in
Bowl Lateral	0.87
Max. PSI	270
Disch size	--
TURBINE OPERATIONS	
Lubbock, Texas	
BOWL PERFORMANCE CURVE BASED ON PUMPING CLEAR, NON-AERATED WATER. RATED POINT ONLY IS GUARANTEED. CURVES REPRESENT SINGLE STAGE PERFORMANCE BASED ON TEST OF MULTI-STAGE BOWL ASSEMBLY. EFFICIENCY CORRECTION APPLIES TO HEAD, FLOW AND HORSEPOWER FOR LESSER STAGES.	

MODEL 24DMC (Effective July 1, 2014)



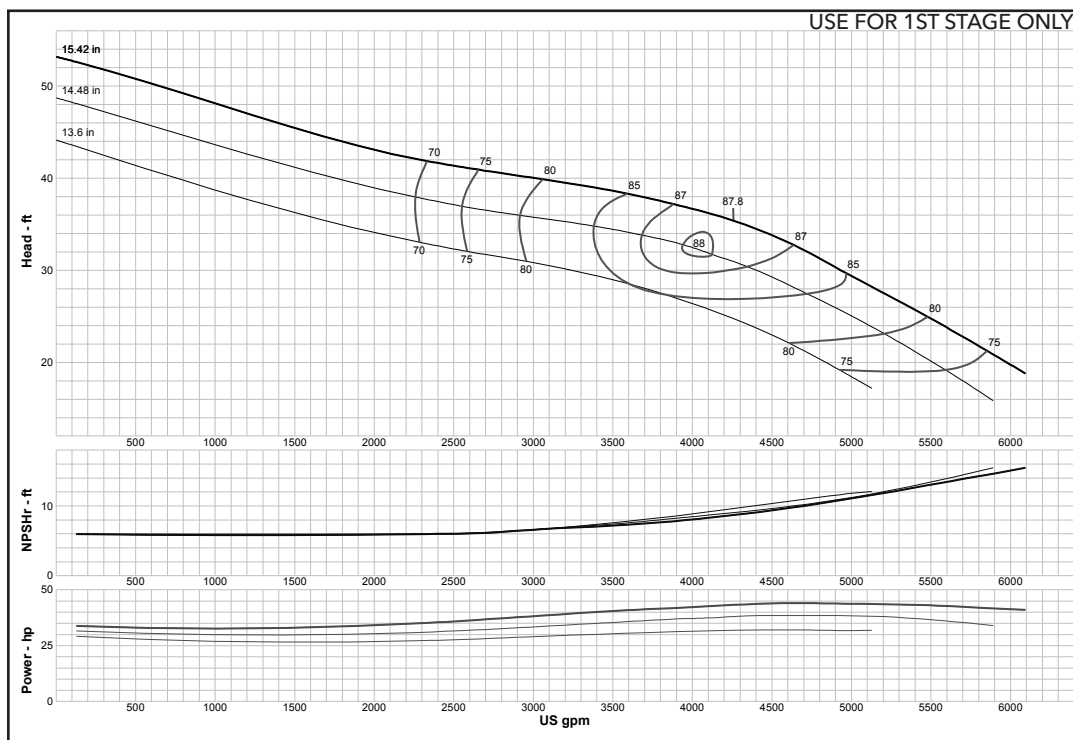
Curve No. E5824DHPC1	
Model	24DMC
RPM	735
EFFICIENCY CORRECTION	
1-STAGE	0
2-STAGE	0
3-STAGE	0
4-STAGE	0
Impeller	ENCLOSED
Ns =	2926
K =	39.5
Bowl O. D.	24.25 in
Bowl Lateral	1.12
Max. PSI	290
Disch size	--
TURBINE OPERATIONS	
Lubbock, Texas	
BOWL PERFORMANCE CURVE BASED ON PUMPING CLEAR, NON-AERATED WATER. RATED POINT ONLY IS GUARANTEED. CURVES REPRESENT SINGLE STAGE PERFORMANCE BASED ON TEST OF MULTI-STAGE BOWL ASSEMBLY. EFFICIENCY CORRECTION APPLIES TO HEAD, FLOW AND HORSEPOWER FOR LESSER STAGES.	

MODEL 24DMC (Effective July 1, 2014)



Curve No. E5824DHPC1	
Model	24DMC
RPM	735
EFFICIENCY CORRECTION	
1-STAGE	0
2-STAGE	0
3-STAGE	0
4-STAGE	0
Impeller	ENCLOSED
Ns =	2926
K =	39.5
Bowl O. D.	24.25 in
Bowl Lateral	1.12
Max. PSI	290
Disch size	--
TURBINE OPERATIONS	
Lubbock, Texas	
BOWL PERFORMANCE CURVE BASED ON PUMPING CLEAR, NON-AERATED WATER. RATED POINT ONLY IS GUARANTEED. CURVES REPRESENT SINGLE STAGE PERFORMANCE BASED ON TEST OF MULTI-STAGE BOWL ASSEMBLY. EFFICIENCY CORRECTION APPLIES TO HEAD, FLOW AND HORSEPOWER FOR LESSER STAGES.	

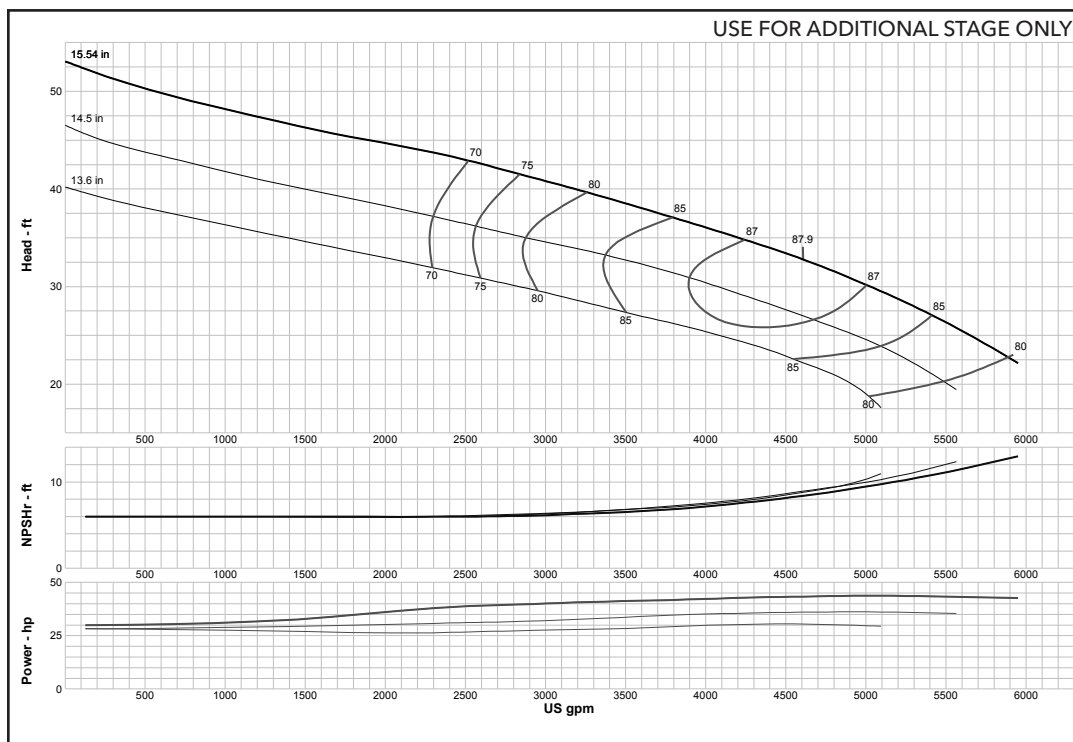
MODEL 24EHC (Effective July 1, 2014)



Curve No. E5824EAPC1	
Model	24EHC
RPM	735
EFFICIENCY CORRECTION	
1-STAGE	0
2-STAGE	0
3-STAGE	0
4-STAGE	0
Impeller	ENCLOSED
Ns =	3661
K =	43.4
Bowl O. D.	22.25 in
Bowl Lateral	0.87
Max. PSI	260
Disch size	--
TURBINE OPERATIONS	
Lubbock, Texas	
BOWL PERFORMANCE CURVE BASED ON PUMPING CLEAR, NON-AERATED WATER. RATED POINT ONLY IS GUARANTEED. CURVES REPRESENT SINGLE STAGE PERFORMANCE BASED ON TEST OF MULTI-STAGE BOWL ASSEMBLY. EFFICIENCY CORRECTION APPLIES TO HEAD, FLOW AND HORSEPOWER FOR LESSER STAGES.	

Turbine

MODEL 24EHC (Effective July 1, 2014)



Curve No. E5824EAPC1

Model 24EHC

RPM 735

EFFICIENCY CORRECTION

1-STAGE	0
2-STAGE	0
3-STAGE	0
4-STAGE	0

Impeller ENCLOSED

Ns = 3661

K = 43.4

Bowl O. D. 22.25 in

Bowl Lateral 0.87

Max. PSI 260

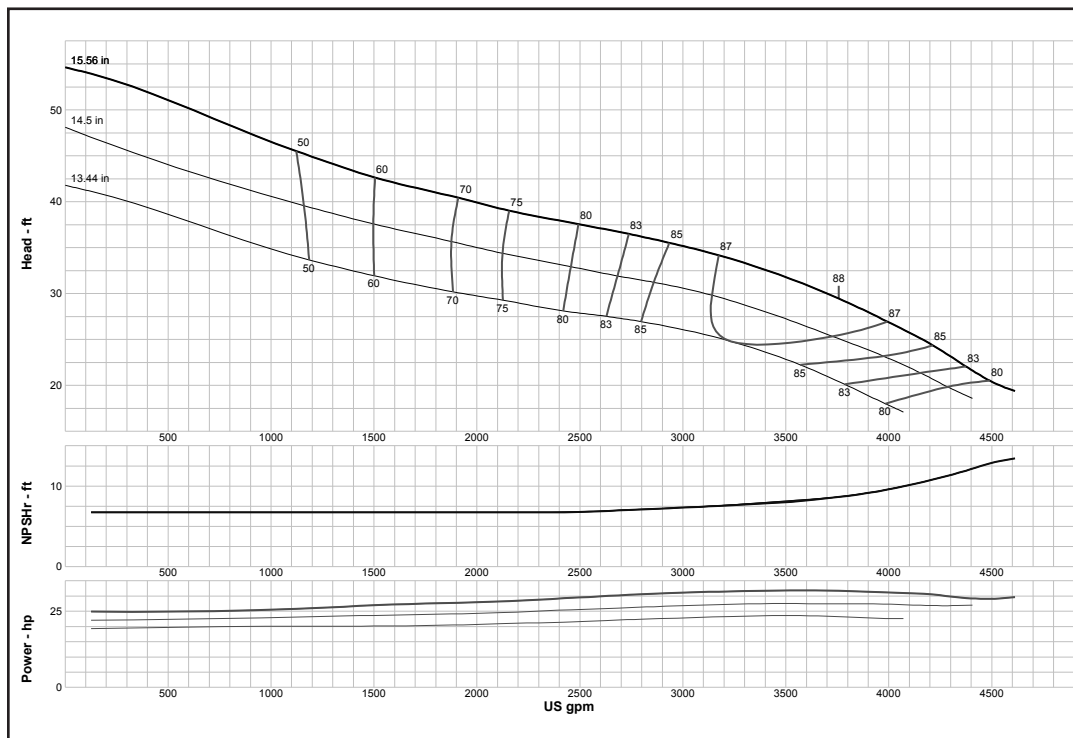
Disch size --

TURBINE OPERATIONS

Lubbock, Texas

BOWL PERFORMANCE CURVE BASED ON PUMPING CLEAR, NON-AERATED WATER. RATED POINT ONLY IS GUARANTEED. CURVES REPRESENT SINGLE STAGE PERFORMANCE BASED ON TEST OF MULTI-STAGE BOWL ASSEMBLY. EFFICIENCY CORRECTION APPLIES TO HEAD, FLOW AND HORSEPOWER FOR LESSER STAGES.

MODEL 24ELC (Effective July 1, 2014)



Curve No. E5824EDPC1

Model 24ELC

RPM 735

EFFICIENCY CORRECTION

1-STAGE	0
2-STAGE	0
3-STAGE	0
4-STAGE	0

Impeller ENCLOSED

Ns = 3538

K = 42

Bowl O. D. 22.25 in

Bowl Lateral 0.87

Max. PSI 260

Disch size --

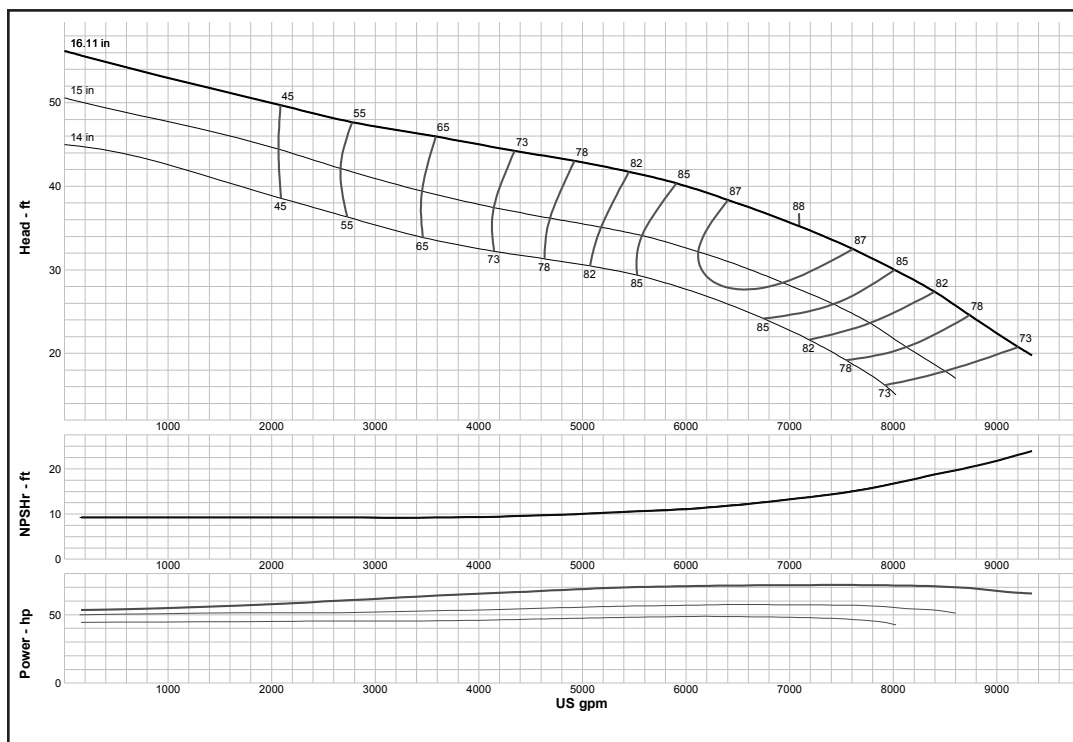
TURBINE OPERATIONS

Lubbock, Texas

BOWL PERFORMANCE CURVE BASED ON PUMPING CLEAR, NON-AERATED WATER. RATED POINT ONLY IS GUARANTEED. CURVES REPRESENT SINGLE STAGE PERFORMANCE BASED ON TEST OF MULTI-STAGE BOWL ASSEMBLY. EFFICIENCY CORRECTION APPLIES TO HEAD, FLOW AND HORSEPOWER FOR LESSER STAGES.

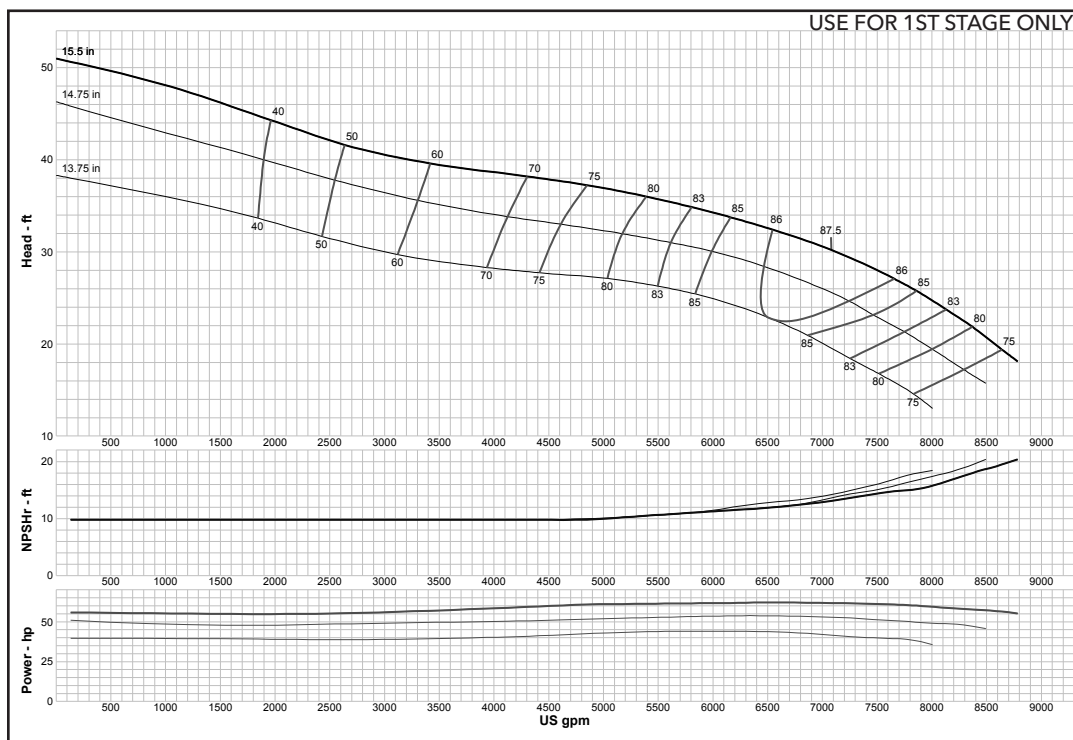
Turbine

MODEL 24FHC (Effective September 1, 2017)



Curve No. E5824FAPC1	
Model	24FHC
RPM	735
EFFICIENCY CORRECTION	
1-STAGE	-0.5
2-STAGE	0
3-STAGE	0
4-STAGE	0
Impeller	ENCLOSED
Ns =	4270
K =	31
Bowl O. D.	24.25 in
Bowl Lateral	0.87
Max. PSI	320
Disch size	--
TURBINE OPERATIONS	
Lubbock, Texas	
BOWL PERFORMANCE CURVE BASED ON PUMPING CLEAR, NON-AERATED WATER. RATED POINT ONLY IS GUARANTEED. CURVES REPRESENT SINGLE STAGE PERFORMANCE BASED ON TEST OF MULTI-STAGE BOWL ASSEMBLY. EFFICIENCY CORRECTION APPLIES TO HEAD, FLOW AND HORSEPOWER FOR LESSER STAGES.	

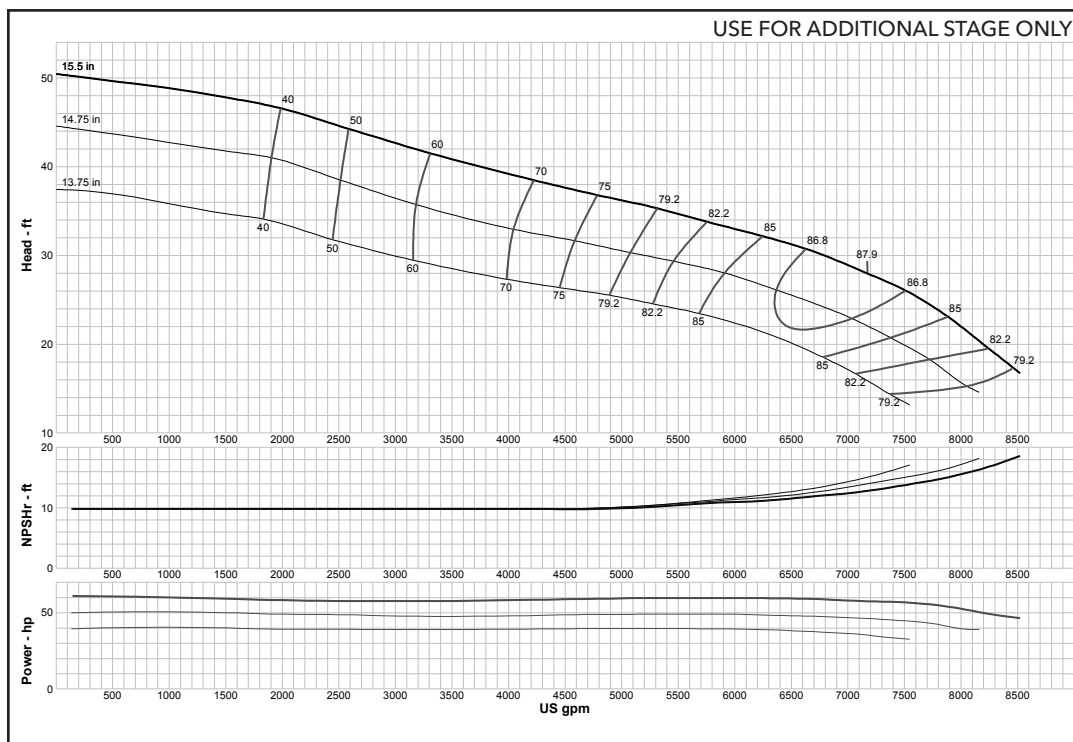
MODEL 24GHC (Effective July 1, 2014)



Curve No. E5824GBPC1	
Model	24GHC
RPM	735
EFFICIENCY CORRECTION	
1-STAGE	0
2-STAGE	0
3-STAGE	0
4-STAGE	0
Impeller	ENCLOSED
Ns =	5195
K =	60
Bowl O. D.	24.25 in
Bowl Lateral	1.62
Max. PSI	250
Disch size	--
TURBINE OPERATIONS	
Lubbock, Texas	
BOWL PERFORMANCE CURVE BASED ON PUMPING CLEAR, NON-AERATED WATER. RATED POINT ONLY IS GUARANTEED. CURVES REPRESENT SINGLE STAGE PERFORMANCE BASED ON TEST OF MULTI-STAGE BOWL ASSEMBLY. EFFICIENCY CORRECTION APPLIES TO HEAD, FLOW AND HORSEPOWER FOR LESSER STAGES.	

Turbine

MODEL 24GHC (Effective July 1, 2014)



Curve No. E5824GBPC1

Model 24GHC

RPM 735

EFFICIENCY CORRECTION

1-STAGE	0
2-STAGE	0
3-STAGE	0
4-STAGE	0

Impeller **ENCLOSED**

Ns = **5195**

K = **60**

Bowl O. D. 24.25 in

Bowl Lateral 1.62

Max. PSI 250

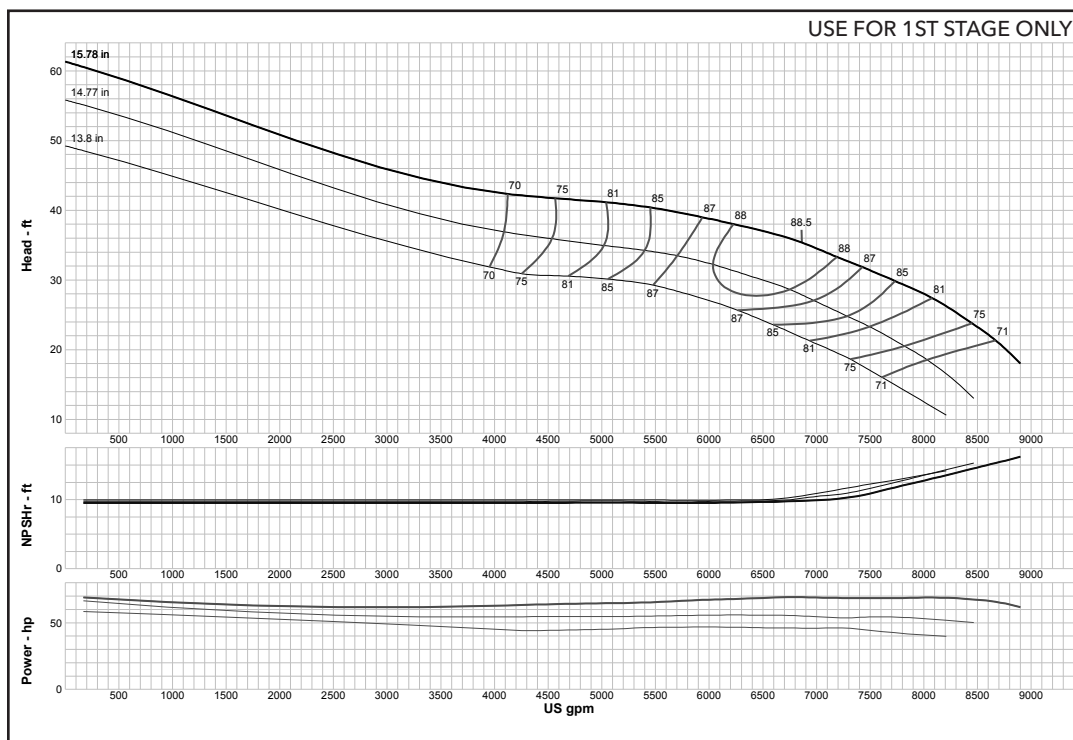
Disch size --

TURBINE OPERATIONS

Lubbock, Texas

BOWL PERFORMANCE CURVE BASED ON PUMPING CLEAR, NON-AERATED WATER. RATED POINT ONLY IS GUARANTEED. CURVES REPRESENT SINGLE STAGE PERFORMANCE BASED ON TEST OF MULTI-STAGE BOWL ASSEMBLY. EFFICIENCY CORRECTION APPLIES TO HEAD, FLOW AND HORSEPOWER FOR LESSER STAGES.

MODEL 24GHXC (Effective July 1, 2014)



Curve No. E5824GGPC1

Model 24GHXC

RPM 735

EFFICIENCY CORRECTION

1-STAGE	0
2-STAGE	0
3-STAGE	0
4-STAGE	0

Impeller **ENCLOSED**

Ns = **4174**

K = **68.7**

Bowl O. D. 24.25 in

Bowl Lateral 1.62

Max. PSI 300

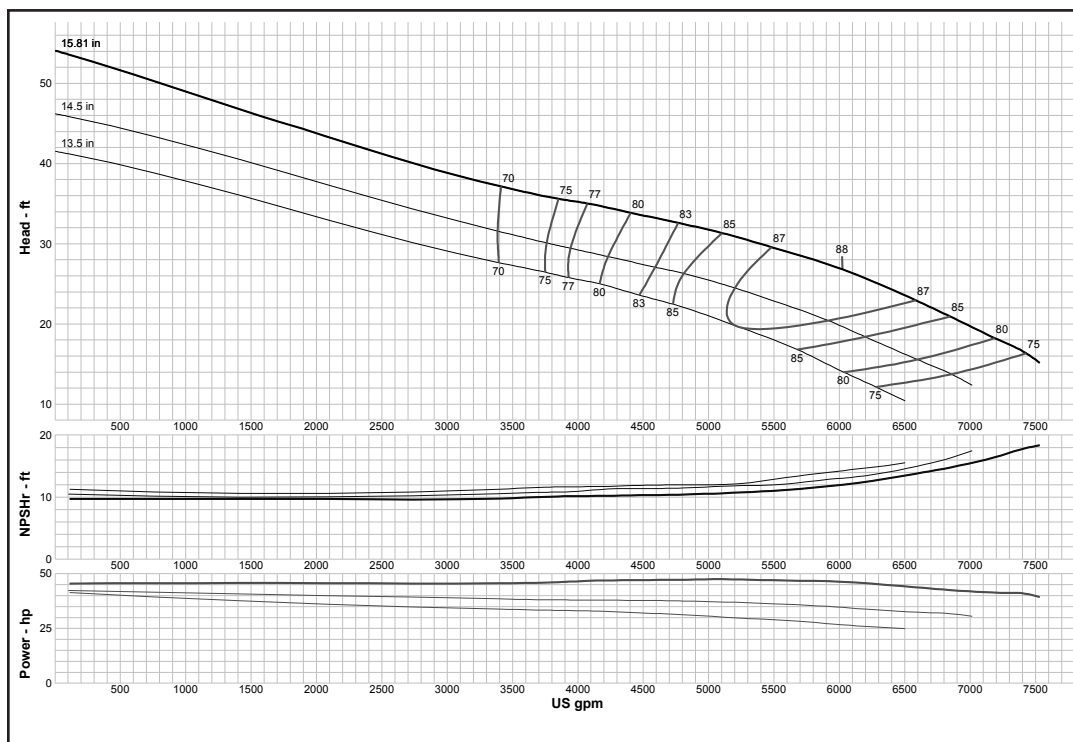
Disch size --

TURBINE OPERATIONS

Lubbock, Texas

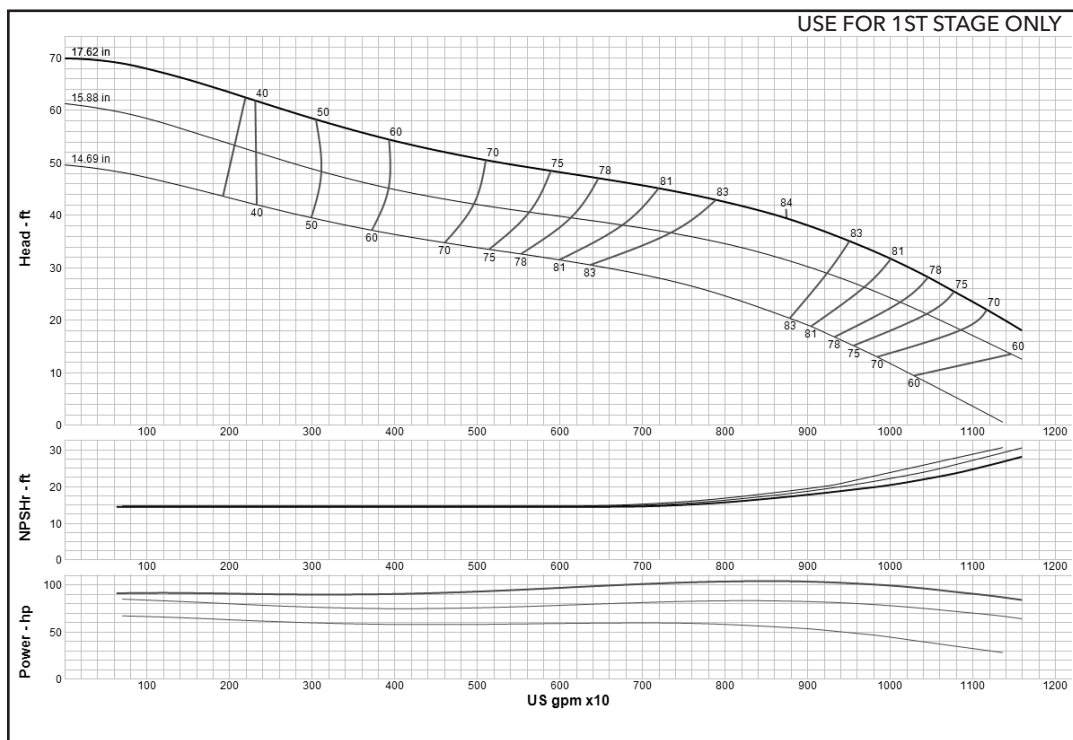
BOWL PERFORMANCE CURVE BASED ON PUMPING CLEAR, NON-AERATED WATER. RATED POINT ONLY IS GUARANTEED. CURVES REPRESENT SINGLE STAGE PERFORMANCE BASED ON TEST OF MULTI-STAGE BOWL ASSEMBLY. EFFICIENCY CORRECTION APPLIES TO HEAD, FLOW AND HORSEPOWER FOR LESSER STAGES.

MODEL 24GLC (Effective September 1, 2017)



Curve No. E5824GPC1	
Model	24GLC
RPM	735
EFFICIENCY CORRECTION	
1-STAGE	0
2-STAGE	0
3-STAGE	0
4-STAGE	0
Impeller	ENCLOSED
Ns =	4654
K =	59.5
Bowl O. D.	24.25 in
Bowl Lateral	1.62
Max. PSI	250
Disch size	--
TURBINE OPERATIONS	
Lubbock, Texas	
BOWL PERFORMANCE CURVE BASED ON PUMPING CLEAR, NON-AERATED WATER. RATED POINT ONLY IS GUARANTEED. CURVES REPRESENT SINGLE STAGE PERFORMANCE BASED ON TEST OF MULTI-STAGE BOWL ASSEMBLY. EFFICIENCY CORRECTION APPLIES TO HEAD, FLOW AND HORSEPOWER FOR LESSER STAGES.	

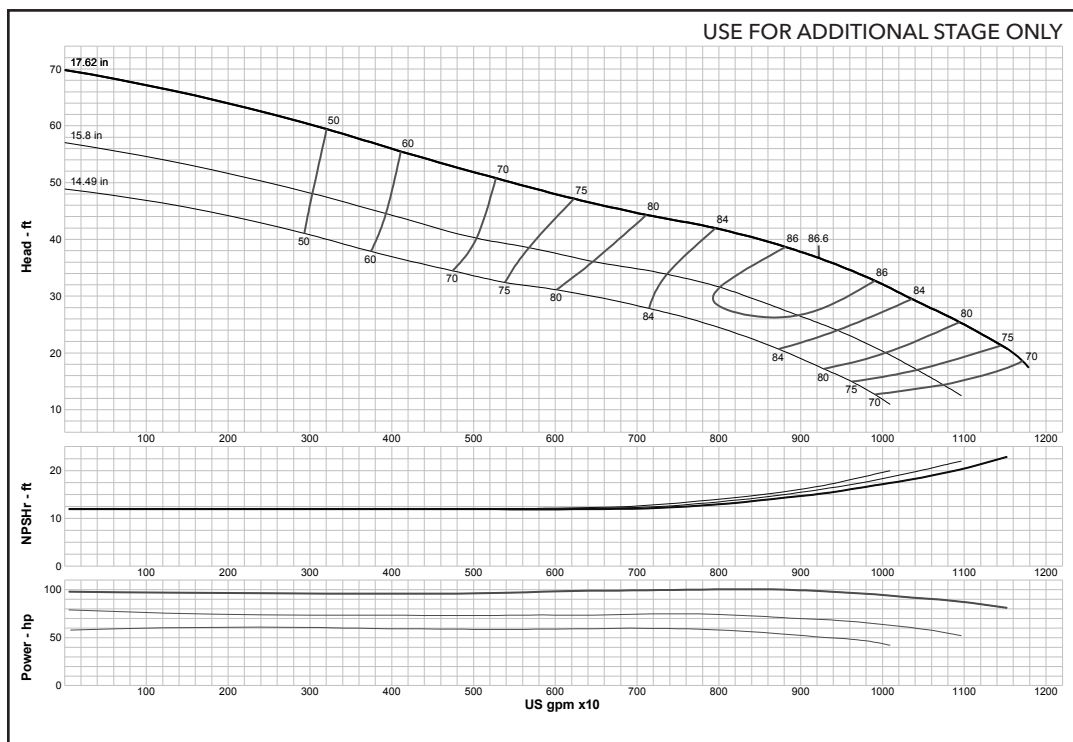
MODEL 26GHC (Effective September 1, 2017)



Curve No. E5826GBPC1	
Model	26GHC
RPM	735
EFFICIENCY CORRECTION	
1-STAGE	0
2-STAGE	0
3-STAGE	0
4-STAGE	0
Impeller	ENCLOSED
Ns =	4376
K =	64.2
Bowl O. D.	26.00 in
Bowl Lateral	1
Max. PSI	230
Disch size	--
TURBINE OPERATIONS	
Lubbock, Texas	
BOWL PERFORMANCE CURVE BASED ON PUMPING CLEAR, NON-AERATED WATER. RATED POINT ONLY IS GUARANTEED. CURVES REPRESENT SINGLE STAGE PERFORMANCE BASED ON TEST OF MULTI-STAGE BOWL ASSEMBLY. EFFICIENCY CORRECTION APPLIES TO HEAD, FLOW AND HORSEPOWER FOR LESSER STAGES.	

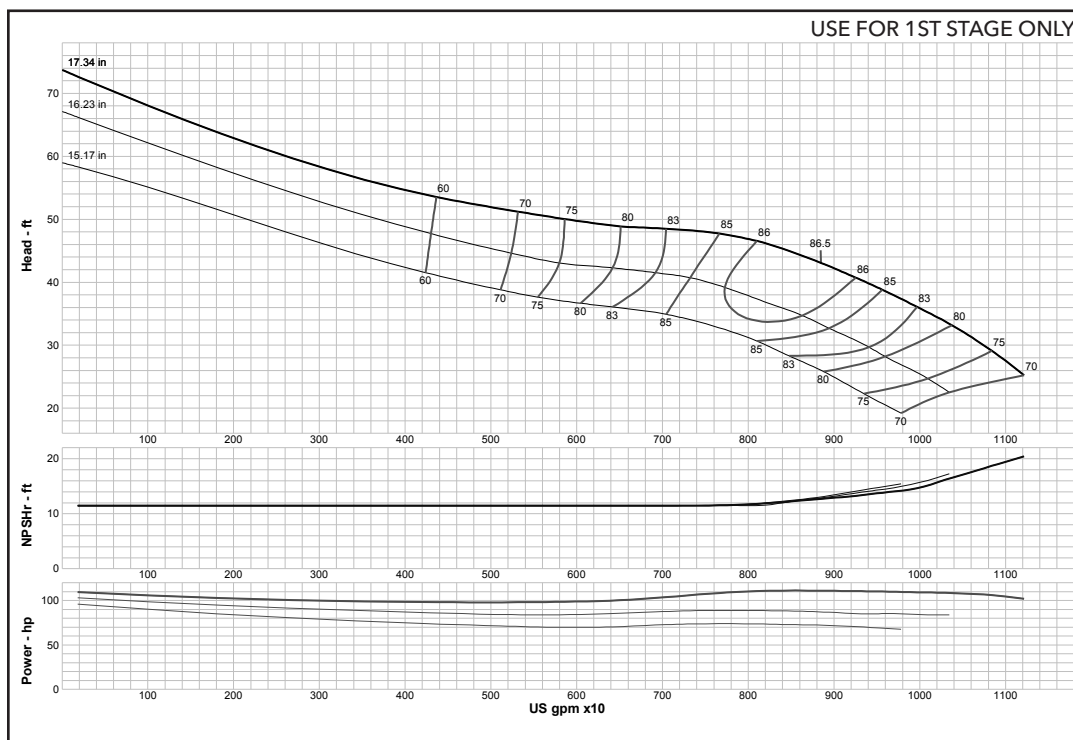
Turbine

MODEL 26GHC (Effective July 1, 2014)



Curve No. E5826GBPC1	
Model	26GHC
RPM	735
EFFICIENCY CORRECTION	
1-STAGE	0
2-STAGE	0
3-STAGE	0
4-STAGE	0
Impeller	ENCLOSED
Ns =	4376
K =	64.2
Bowl O. D.	26.00 in
Bowl Lateral	1
Max. PSI	230
Disch size	--
TURBINE OPERATIONS	
Lubbock, Texas	
BOWL PERFORMANCE CURVE BASED ON PUMPING CLEAR, NON-AERATED WATER. RATED POINT ONLY IS GUARANTEED. CURVES REPRESENT SINGLE STAGE PERFORMANCE BASED ON TEST OF MULTI-STAGE BOWL ASSEMBLY. EFFICIENCY CORRECTION APPLIES TO HEAD, FLOW AND HORSEPOWER FOR LESSER STAGES.	

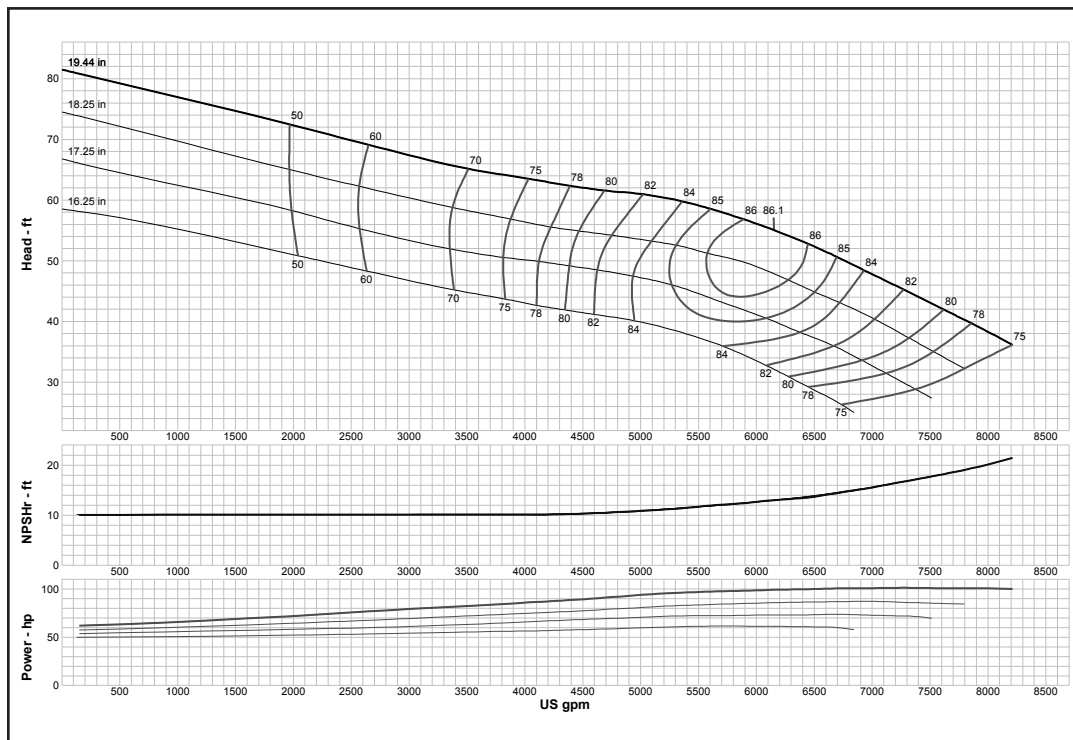
MODEL 26GHXC (Effective July 1, 2014)



Curve No. E5826GGPC1	
Model	26GHXC
RPM	735
EFFICIENCY CORRECTION	
1-STAGE	0
2-STAGE	0
3-STAGE	0
4-STAGE	0
Impeller	ENCLOSED
Ns =	4130
K =	80.9
Bowl O. D.	26.00 in
Bowl Lateral	1
Max. PSI	200
Disch size	--
TURBINE OPERATIONS	
Lubbock, Texas	
BOWL PERFORMANCE CURVE BASED ON PUMPING CLEAR, NON-AERATED WATER. RATED POINT ONLY IS GUARANTEED. CURVES REPRESENT SINGLE STAGE PERFORMANCE BASED ON TEST OF MULTI-STAGE BOWL ASSEMBLY. EFFICIENCY CORRECTION APPLIES TO HEAD, FLOW AND HORSEPOWER FOR LESSER STAGES.	

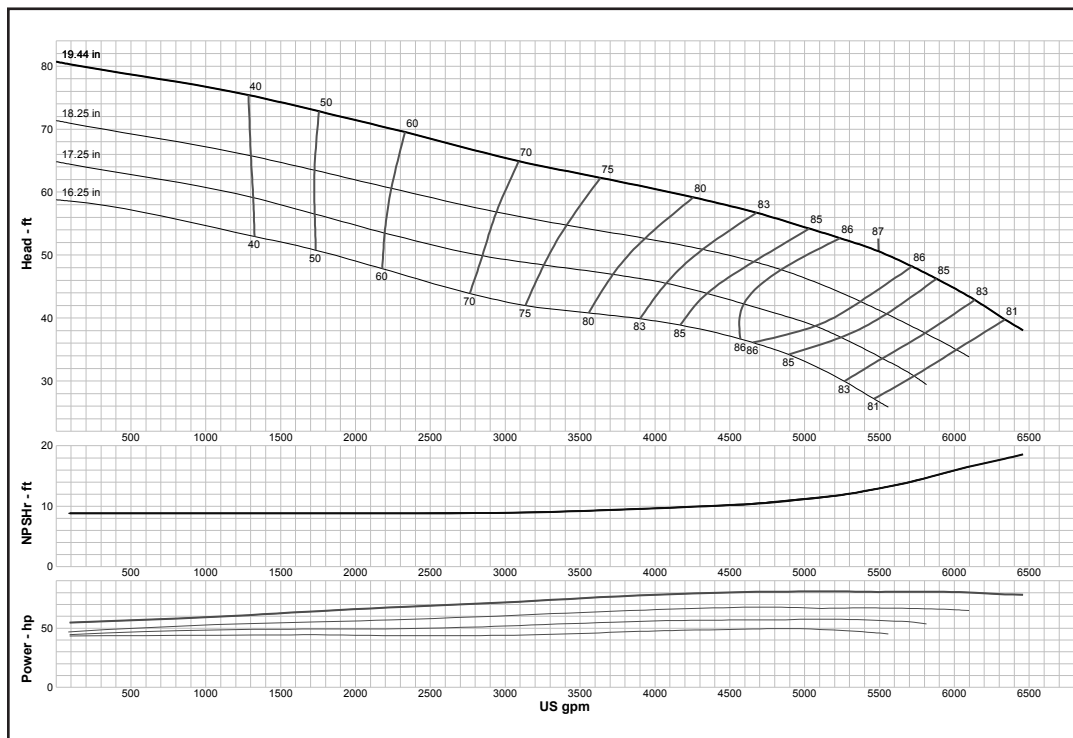
Turbine

MODEL 28BHC (Effective July 1, 2014)



Curve No. E5828BBPC1	
Model	28BHC
RPM	735
EFFICIENCY CORRECTION	
1-STAGE	-1
2-STAGE	0
3-STAGE	0
4-STAGE	0
Impeller	ENCLOSED
Ns =	2836
K =	68.5
Bowl O. D.	26.88 in
Bowl Lateral	0.87
Max. PSI	220
Disch size	--
TURBINE OPERATIONS	
Lubbock, Texas	
BOWL PERFORMANCE CURVE BASED ON PUMPING CLEAR, NON-AERATED WATER. RATED POINT ONLY IS GUARANTEED. CURVES REPRESENT SINGLE STAGE PERFORMANCE BASED ON TEST OF MULTI-STAGE BOWL ASSEMBLY. EFFICIENCY CORRECTION APPLIES TO HEAD, FLOW AND HORSEPOWER FOR LESSER STAGES.	

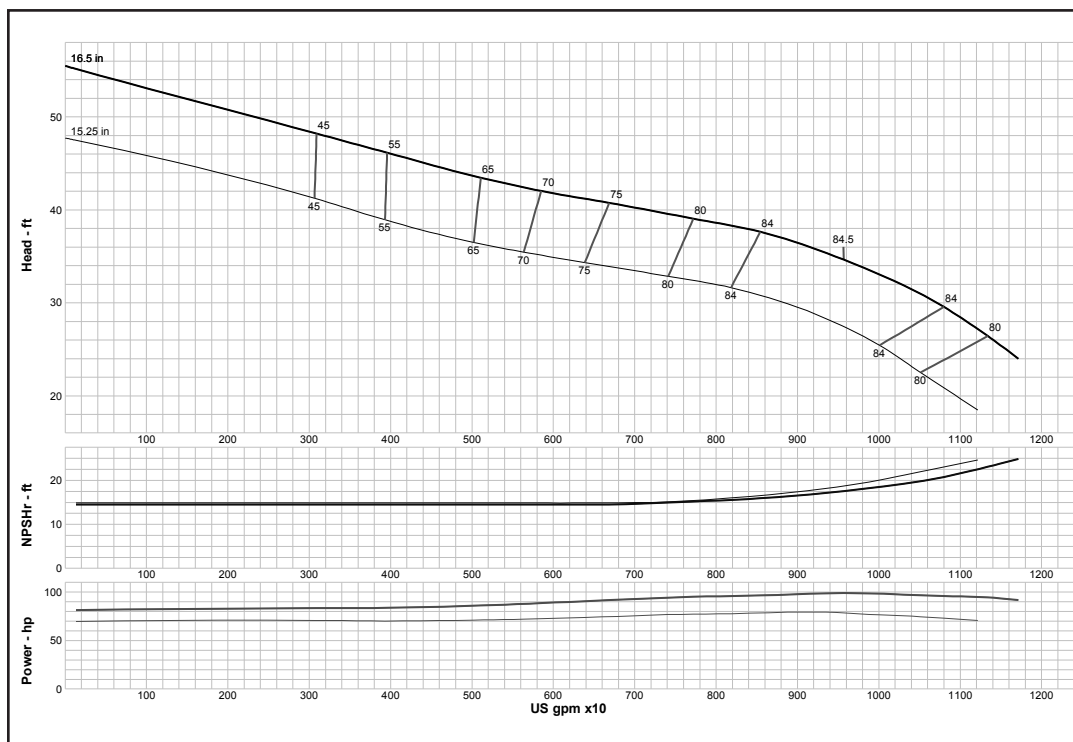
MODEL 28BLC (Effective July 1, 2014)



Curve No. E5828BEPC1	
Model	28BLC
RPM	735
EFFICIENCY CORRECTION	
1-STAGE	-3
2-STAGE	-1
3-STAGE	0
4-STAGE	0
Impeller	ENCLOSED
Ns =	2849
K =	68.5
Bowl O. D.	26.88 in
Bowl Lateral	0.87
Max. PSI	220
Disch size	--
TURBINE OPERATIONS	
Lubbock, Texas	
BOWL PERFORMANCE CURVE BASED ON PUMPING CLEAR, NON-AERATED WATER. RATED POINT ONLY IS GUARANTEED. CURVES REPRESENT SINGLE STAGE PERFORMANCE BASED ON TEST OF MULTI-STAGE BOWL ASSEMBLY. EFFICIENCY CORRECTION APPLIES TO HEAD, FLOW AND HORSEPOWER FOR LESSER STAGES.	

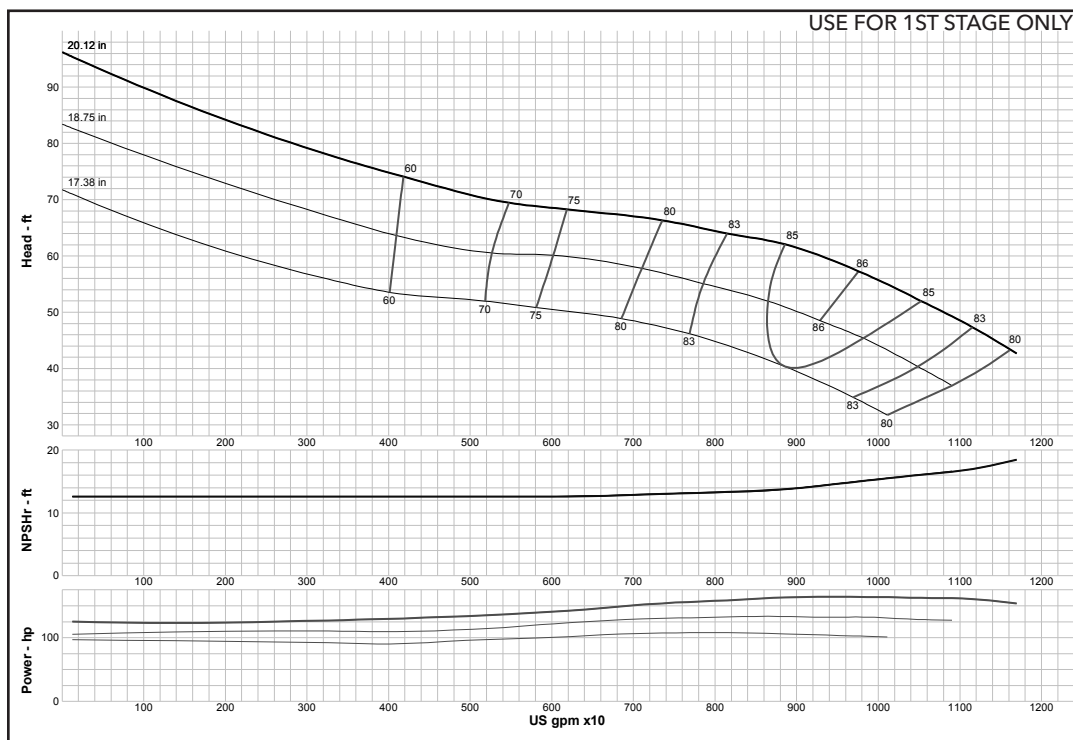
Turbine

MODEL 28GHC (Effective July 1, 2014)



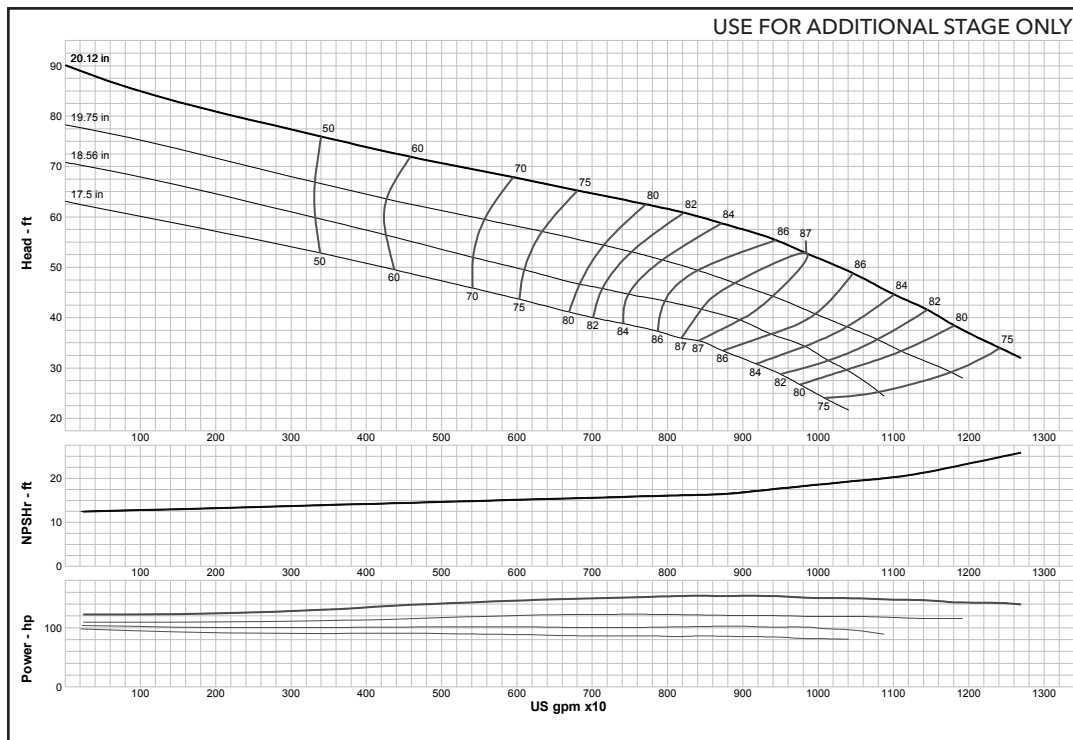
Curve No. E5828GBPC1	
Model	28GHC
RPM	735
EFFICIENCY CORRECTION	
1-STAGE	0
2-STAGE	0
3-STAGE	0
4-STAGE	0
Impeller	ENCLOSED
Ns =	4481
K =	69
Bowl O. D.	26.88 in
Bowl Lateral	1.5
Max. PSI	190
Disch size	--
TURBINE OPERATIONS	
Lubbock, Texas	
BOWL PERFORMANCE CURVE BASED ON PUMPING CLEAR, NON-AERATED WATER. RATED POINT ONLY IS GUARANTEED. CURVES REPRESENT SINGLE STAGE PERFORMANCE BASED ON TEST OF MULTI-STAGE BOWL ASSEMBLY. EFFICIENCY CORRECTION APPLIES TO HEAD, FLOW AND HORSEPOWER FOR LESSER STAGES.	

MODEL 30BHC (Effective July 1, 2014)



Curve No. E5830BBPC1	
Model	30BHC
RPM	735
EFFICIENCY CORRECTION	
1-STAGE	0
2-STAGE	0
3-STAGE	0
4-STAGE	0
Impeller	ENCLOSED
Ns =	3540
K =	92
Bowl O. D.	29.50 in
Bowl Lateral	0.87
Max. PSI	216
Disch size	--
TURBINE OPERATIONS	
Lubbock, Texas	
BOWL PERFORMANCE CURVE BASED ON PUMPING CLEAR, NON-AERATED WATER. RATED POINT ONLY IS GUARANTEED. CURVES REPRESENT SINGLE STAGE PERFORMANCE BASED ON TEST OF MULTI-STAGE BOWL ASSEMBLY. EFFICIENCY CORRECTION APPLIES TO HEAD, FLOW AND HORSEPOWER FOR LESSER STAGES.	

MODEL 30BHC (Effective July 1, 2014)



Curve No. E5830BBPC1	
Model	30BHC
RPM	735
EFFICIENCY CORRECTION	
1-STAGE	0
2-STAGE	0
3-STAGE	0
4-STAGE	0
Impeller	ENCLOSED
Ns =	3540
K =	92
Bowl O. D.	29.50 in
Bowl Lateral	0.87
Max. PSI	216
Disch size	--
TURBINE OPERATIONS	
Lubbock, Texas	
<p>BOWL PERFORMANCE CURVE BASED ON PUMPING CLEAR, NON-AERATED WATER. RATED POINT ONLY IS GUARANTEED. CURVES REPRESENT SINGLE STAGE PERFORMANCE BASED ON TEST OF MULTI-STAGE BOWL ASSEMBLY. EFFICIENCY CORRECTION APPLIES TO HEAD, FLOW AND HORSEPOWER FOR LESSER STAGES.</p>	

Xylem |'zīləm|

- 1) The tissue in plants that brings water upward from the roots;
- 2) a leading global water technology company.

We're a global team unified in a common purpose: creating advanced technology solutions to the world's water challenges. Developing new technologies that will improve the way water is used, conserved, and re-used in the future is central to our work. Our products and services move, treat, analyze, monitor and return water to the environment, in public utility, industrial, residential and commercial building services, and agricultural settings. With its October 2016 acquisition of Sensus, Xylem added smart metering, network technologies and advanced data analytics for water, gas and electric utilities to its portfolio of solutions. In more than 150 countries, we have strong, long-standing relationships with customers who know us for our powerful combination of leading product brands and applications expertise with a strong focus on developing comprehensive, sustainable solutions.

For more information on how Xylem can help you, go to www.xylem.com



Xylem Inc.
P.O. Box 5487
Lubbock, TX 79408
Tel +1.806.763.7867
Fax +1.800.453.4749
www.xylem.com

Goulds is a registered trademark of Goulds Pumps, Inc. and is used under license.
© 2018 Xylem Inc. C750 R3 January 2018