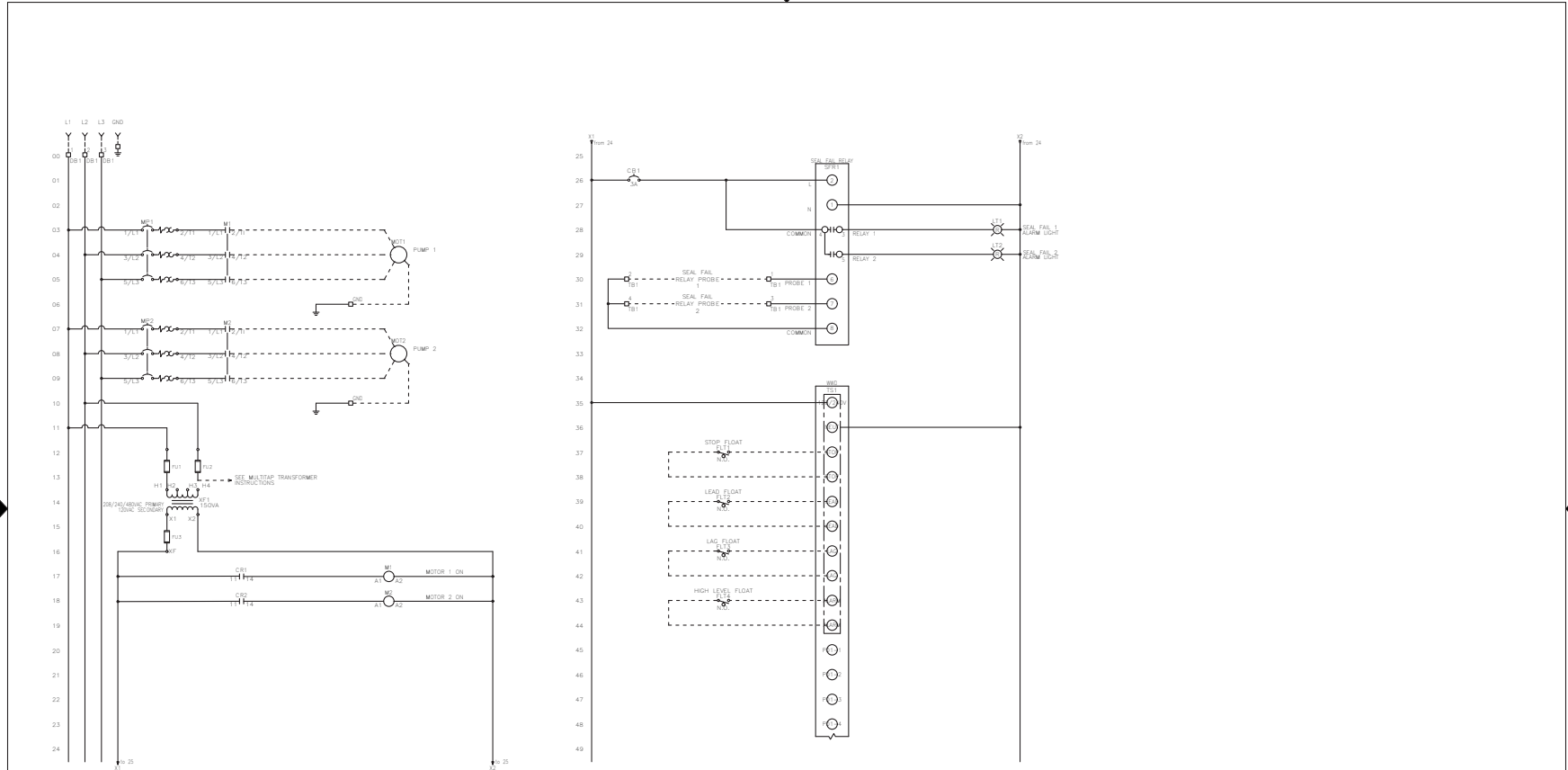


NS Duplex NSD365115 Control Panel Schematic and Layout

CONTROL PANEL SCHEMATIC

FNAME: NSD365115

REVDATE: 0425



MULTI-TAP TRANSFORMER:
 CONNECT FACTORY TAGGED WIRES TO APPROPRIATE TRANSFORMER VOLTAGE TAP. SEE BELOW FOR CONNECTIONS:
 FOR 208V OPERATION, CONNECT TO FUSE INPUT HF & TO TRANSFORMER TAP H2.
 FOR 240V OPERATION, CONNECT TO FUSE INPUT HF & TO TRANSFORMER TAP H3.
 FOR 480V OPERATION, CONNECT TO FUSE INPUT HF & TO TRANSFORMER TAP H4.

DASHED LINE INDICATES FIELD WIRING.
 USE COPPER CONDUCTORS ONLY.
 TEMPERATURE RATING OF CONDUCTORS IS TO BE: 60°C (140°F) FOR UNDER 100A. 75°C (167°F) FOR OVER 100A.
 BRANCH CIRCUIT PROTECTION SHALL BE PROVIDED BY THE INSTALLER. MUST BE SIZED ACCORDING TO PUMP/MOTOR MANUFACTURING SPECIFICATIONS.
 VERIFY CORRECT OPERATION OF CONTROL PANEL AFTER INSTALLATION IS COMPLETE.

FIELD WIRING TORQUE SPECS.	
TERMINAL BLOCK UT 2,5	5 IN-LB
TERMINAL BLOCK UT 4	7 IN-LB
TERMINAL BLOCK UT 6	15 IN-LB
TERMINAL BLOCK UT 10	15 IN-LB
TERMINAL BLOCK UT 16	25 IN-LB
TERMINAL BLOCK UT 35	30 IN-LB
TS1, TS2, J2 & J3 POS	5 IN-LB
TRANSFORMER H1F, H2F & H3F	15 IN-LB
TRANSFORMER H1, H2 & H3	10 IN-LB
DS1 VL53P63-125 R2	45 IN-LB
DS1 LK4JU3CN 100A	36 IN-LB
DS1 LK4MU3N 200A	200 IN-LB

DRAWN BY: AL
 DATE: 04/11/23
 APPROVED BY: DO
 DATE: 04/12/23

THIS DRAWING CONTAINS PROPRIETARY INFORMATION AND SHALL NOT BE USED OR DISCLOSED WITHOUT PRIOR WRITTEN AUTHORIZATION.

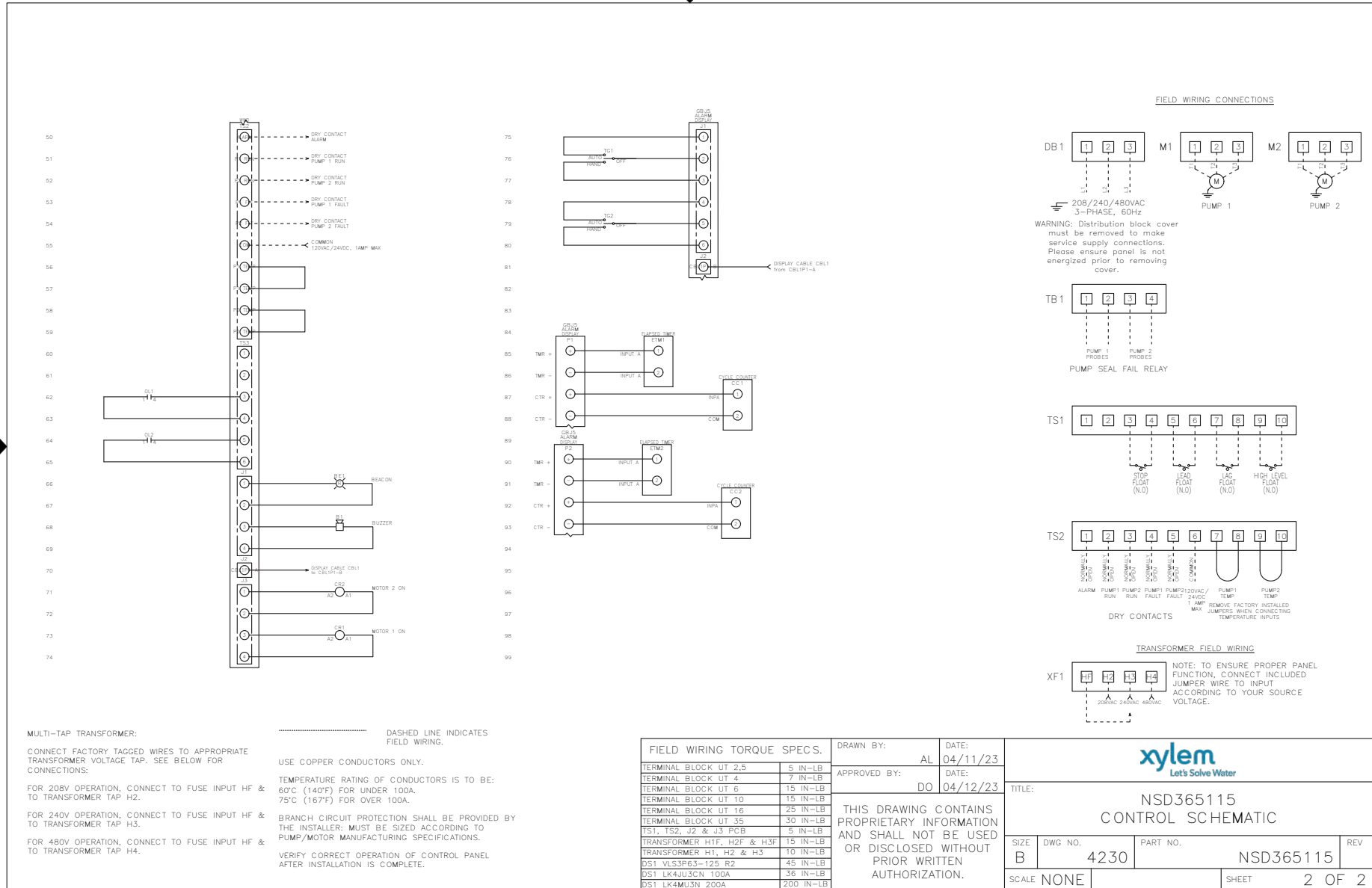
xylem Let's Solve Water			
TITLE: NSD365115 CONTROL SCHEMATIC			
SIZE	DWG NO.	PART NO.	REV
B	4230	NSD365115	
SCALE NONE		SHEET 1 OF 2	

CONTROL PANEL SCHEMATIC

GWTNSD365115 R1

NSD365115

REVDATE: 04/23



DRAWN BY: AL
DATE: 04/11/23
APPROVED BY: DO
DATE: 04/12/23

TITLE: NSD365115 CONTROL SCHEMATIC

THIS DRAWING CONTAINS PROPRIETARY INFORMATION AND SHALL NOT BE USED OR DISCLOSED WITHOUT PRIOR WRITTEN AUTHORIZATION.

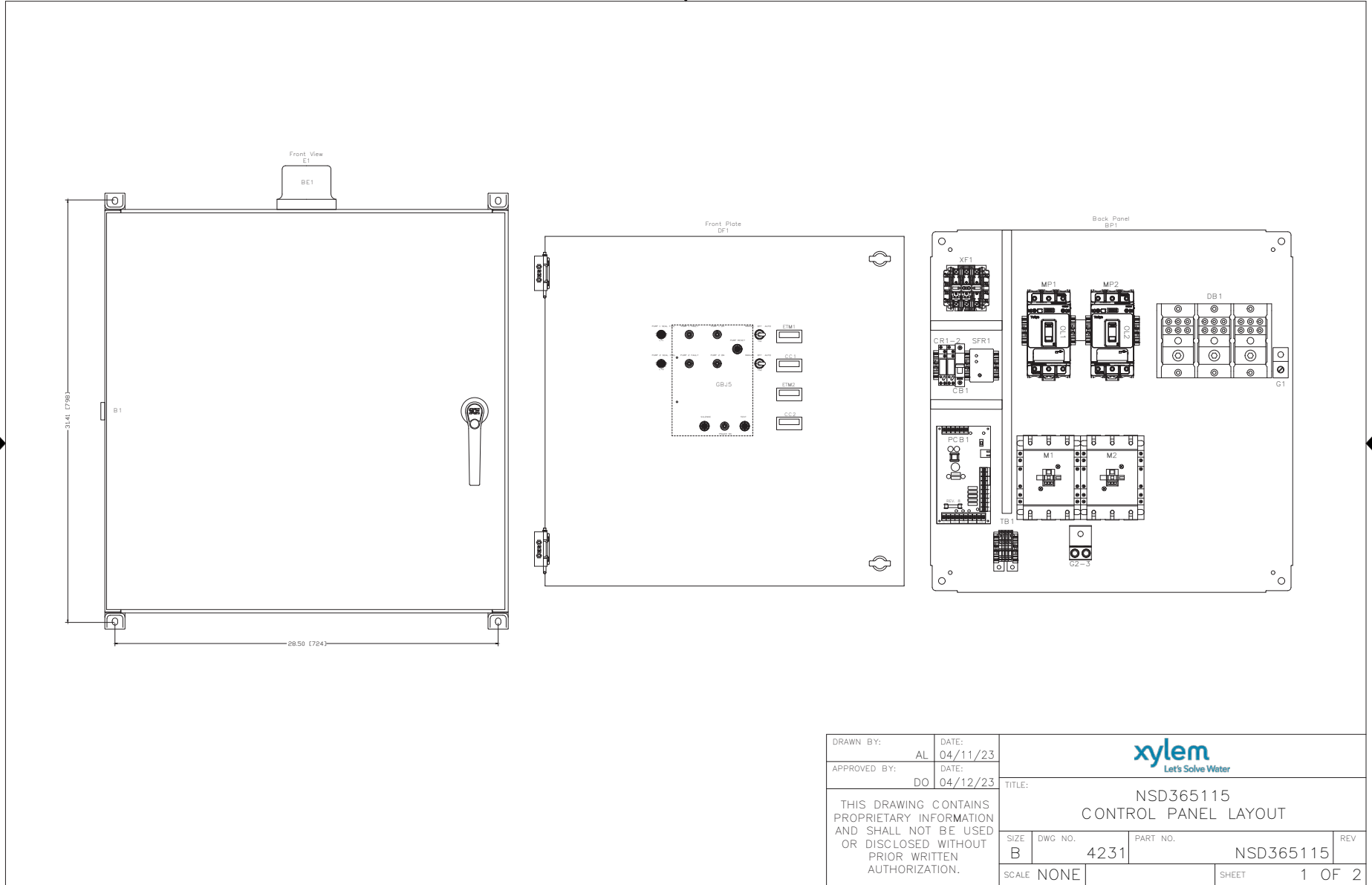
NSD365115 CONTROL SCHEMATIC	
SIZE B	DWG NO. 4230
PART NO. NSD365115	REV
SCALE NONE	SHEET 2 OF 2


CONTROL PANEL LAYOUT

GWTNSD365115 R1

FNAME: NSD365115

REVDATE: 04/23



DRAWN BY: AL		DATE: 04/11/23		 Let's Solve Water			
APPROVED BY: DO		DATE: 04/12/23					
THIS DRAWING CONTAINS PROPRIETARY INFORMATION AND SHALL NOT BE USED OR DISCLOSED WITHOUT PRIOR WRITTEN AUTHORIZATION.				TITLE: NSD365115 CONTROL PANEL LAYOUT			
				SIZE: B	DWG NO.: 4231	PART NO.: NSD365115	REV:
				SCALE: NONE	SHEET: 1 OF 2		


CONTROL PANEL LAYOUT

FNAME: NSD365115

REVDATE: 0423

QTY	MANUFACTURER	DESCRIPTION	PART NUMBER	REF.
1	Saginaw	P.S. 3R Enclosure 30x30x12	SCE-30EL3012LPPL	E1
1	Saginaw	Dead Front	SCE-DF30EL30LP	DF1
1	Saginaw	Back Panel	SCE-30P30	BP1
1	Ingram	Beacon	SLRX-123N	BE1
1	Ingram	Buzzer	PB-024-AD	B1
2	VCC	Red Light	1050QC1	LT1-2
1	See Water	Display Board	GBJ5	GBJ5
5	LEDTRONICS	White Lens	LENS-LCD780-CWF	N/A
2	See Water	Flat Cable Assembly	IDC-25MB	N/A
2	Molex	4 Pin Connector	09-50-3041	N/A
1	Molex	6 Pin Connector	09-50-3061	N/A
1	See Water	Power Circuit Board	WWD	PCB1
2	Carling	HOA Toggle Switch	6FC57-73	TG1-2
1	Schneider	Multitap Transformer 50VA	9070TF50D20	XF1
2	Mersen	ATQR 3/10A Fuse	ATQR-3/10A	XF1
1	Mersen	TRM 6/10A Fuse	TRM-6/10A	XF1
2	Schneider	Motor Protector	GV4PB115N	MP1-2
2	Schneider	Side Mount Auxiliary	GV4AE11	OL1-2
2	Schneider	Contactora	LC1D115G7	M1-2

QTY	MANUFACTURER	DESCRIPTION	PART NUMBER	REF.
1	Schneider	Circuit Breaker 3A	B1E1C3	CB1
2	Schneider	Mini Plug In Relay Holder	RSZE1S35M	CR1-2
2	Schneider	Mini Plug In Relay Clamp	RSZR215	CR1-2
2	Schneider	Mini Plug In Relay 12VDC	RSB1A120JD	CR1-2
1	Macromatics	Seal Fail Dual Channel Relay	SFP120C100	SFR1
1	Mactomatics	8 Pin Socket	70169-D	SFR1
2	Trumeter	Elapsed Timer	6320-2500-0000	ETM1-2
2	Trumeter	Cycle Counter	6300-2500-0000	CC1-2
1	Schneider	Power distribution block	9080LBA365106	DB1
4	Phoenix Contact	Terminal Block - UT 4	3044102	TB1
7	Phoenix Contact	End Stop	3022218	N/A
1	Phoenix Contact	End Cover	3047028	N/A
1	Burndy	Ground Lug	2S250	G2-3
1	Burndy	Ground Lug	KA3IU	G1
2	Altech	Angled Mounting Bracket	CA603	N/A
4	See Water	N.O. Narrow Angle Floats 50'	FPC0N50	N/A
1	UL	508A UL Label	N/A	N/A

DRAWN BY: AL	DATE: 04/11/23	 Let's Solve Water			
APPROVED BY: DO	DATE: 04/12/23				
THIS DRAWING CONTAINS PROPRIETARY INFORMATION AND SHALL NOT BE USED OR DISCLOSED WITHOUT PRIOR WRITTEN AUTHORIZATION.		TITLE: NSD365115 CONTROL PANEL LAYOUT			
		SIZE B	DWG NO. 4231	PART NO. NSD365115	REV
		SCALE NONE	SHEET 2 OF 2		



Xylem Inc.
 2881 East Bayard Street Ext.
 Seneca Falls, NY 13148
 Phone: (800) 453-6777
 Fax: (888) 322-5877
www.xylem.com/goulds