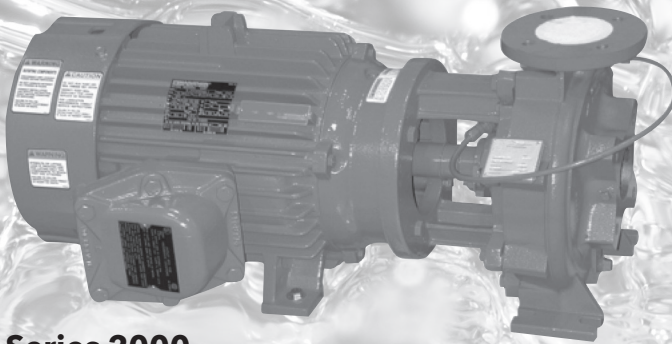
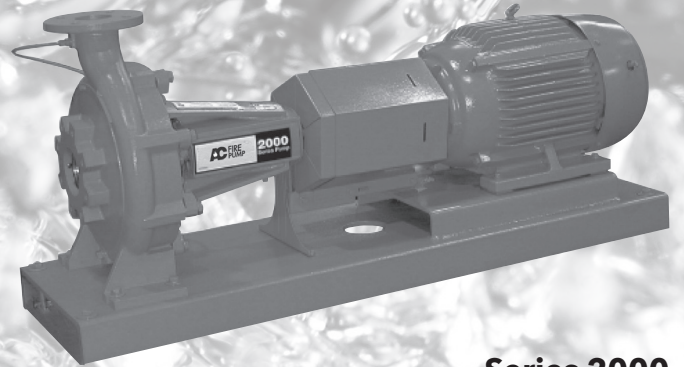


SUBMITTALS BOOK

AC2000SUB



**Series 2000
Closed Coupled**



**Series 2000
Frame Mounted**

Series A-C 2000

SINGLE STAGE END SUCTION

 **GOULDS**
WATER TECHNOLOGY
a xylem brand

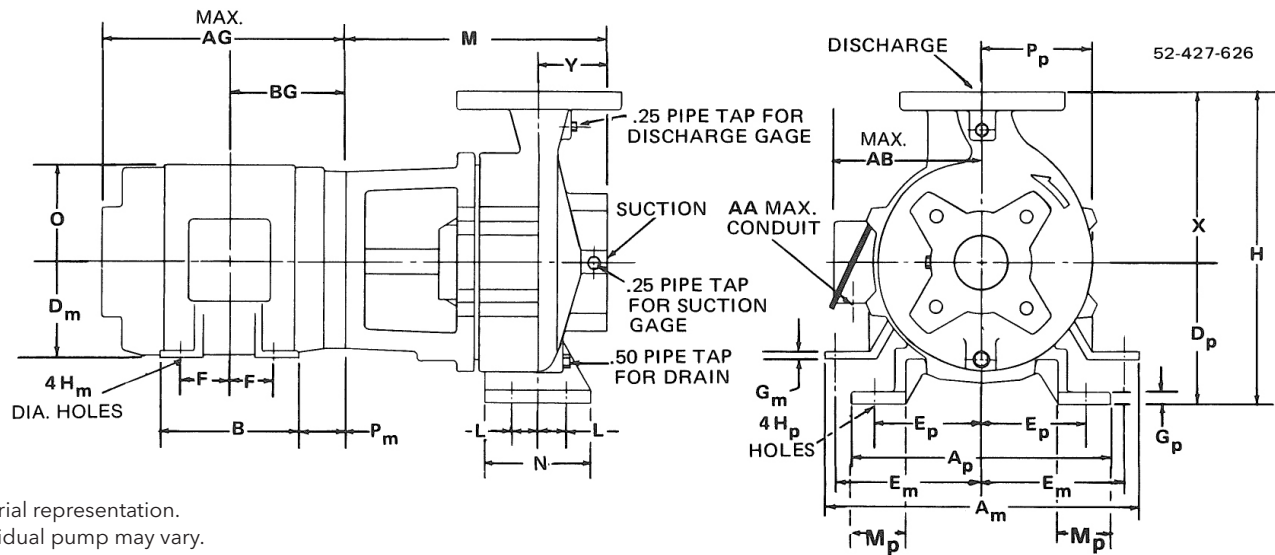
CONTENTS

Model 600 - 1½ x 1½ x 9 through 3 x 2½ x 9	3
Model 600 - 3 x 2½ x 13 through 8 x 6 x 11	5
Model 100	7
Model 150 - 1½ x 1½ x 9 through 2½ x 2 x 6½L	9
Model 150 - 2½ x 2 x 9S through 3 x 2 x 10	10
Model 150 - 3 x 2 x 11 through 4 x 3 x 6½	11
Model 150 - 4 x 3 x 9 through 6 x 4 x 9	12
Model 150 - 6 x 4 x 13 through 6 x 6 x 13L	13
Model 150 - 8 x 6 x 9½ through 10 x 8 x 13	14
Model 150 - 1½ x 1½ x 9 through 2½ x 2 x 6½L	15
Model 150 - 2½ x 2 x 9S through 3 x 2 x 10	16
Model 150 - 3 x 2 x 11 through 4 x 3 x 6½	17
Model 150 - 4 x 3 x 9 through 6 x 4 x 9	18
Model 150 - 6 x 4 x 13 through 6 x 6 x 13L	19
Model 150 - 8 x 6 x 9½ through 10 x 8 x 13	20

Single Stage End Suction Close Coupled Pumps - Model 600

DIMENSIONS – 1½ x 1½ x 9 through 3 x 2½ x 9

Supersedes all previous issues.



Pictorial representation.
Individual pump may vary.

Pump size	Suct.	Disch.	Ap	Dp	Ep	Gp	L	Mp	N	H	Power Module							
											Pp	X	Y	Hp	M PM1	M PM2	M PM4	M PM8
③ 1.5x1.5x9	1.5	1.5	9.56	6.29	3.74	0.51	1.36	1.96	3.74	13.37	5.52	7.08	2.86	0.56	10.17	10.98	-	-
2x1.5x6.5	2	1.5	9.56	5.19	3.74	0.50	1.39	1.96	3.93	11.48	4.00	6.29	2.52	0.56	9.80	10.61	-	-
③ 2x1.5x9	2	1.5	9.56	6.29	3.74	0.50	1.39	1.97	3.93	13.37	5.52	7.08	2.60	0.56	9.85	10.66	10.66	-
2.5x2x6.5S	2.5	2	9.56	5.19	3.74	0.51	1.39	1.96	3.93	11.48	4.18	6.29	2.60	0.56	9.88	10.69	-	-
2.5x2x6.5L	2.5	2	9.56	5.19	3.74	0.51	1.39	1.96	3.93	11.48	4.18	6.29	2.60	0.56	9.88	10.69	-	-
③ 2.5x2x9S	2.5	2	10.43	6.29	4.17	0.50	1.36	1.97	3.94	13.37	5.50	7.08	2.39	0.56	9.64	10.45	-	-
③ 2.5x2x9L	2.5	2	10.43	6.29	4.17	0.50	1.36	1.97	3.94	13.37	5.50	7.08	2.39	0.56	9.64	10.45	10.45	-
3x2x6.5S	3	2	10.43	6.29	4.17	0.51	1.39	1.96	3.93	13.37	4.38	7.08	2.92	0.56	10.20	11.01	-	-
3x2x6.5L	3	2	10.43	6.29	4.17	0.51	1.39	1.96	3.93	13.37	4.38	7.08	2.92	0.56	10.20	11.01	11.01	-
3x2x9	3	2	10.43	6.29	4.17	0.51	1.36	1.97	3.94	14.16	5.50	7.87	2.60	0.56	9.85	10.66	10.66	-
3x2x10	3	2	10.43	6.29	4.17	0.51	1.36	1.97	3.94	14.16	5.50	7.87	2.60	0.56	9.85	10.66	10.66	-
3x2x11	3	2	12.40	7.08	4.92	0.51	1.87	2.55	4.92	15.89	6.50	8.81	2.60	0.56	9.87	10.68	-	-
3x2.5x11	3	2.5	12.79	7.08	4.92	0.51	1.87	2.55	4.92	15.89	6.56	8.81	3.21	0.56	10.49	11.30	-	-
3x2.5x9	3	2.5	12.59	7.08	4.92	0.51	1.87	2.55	4.92	15.89	5.78	8.81	3.21	0.75	10.45	11.26	11.26	11.26

CAUTION: Certain pump and motor construction may result in motor feet extending below pump feet. See Dimension Dm and Dp.

- ① All Dimensions are in inches.
- ② Suction and Discharge connections are 125 psi ANSI B16.1 Standard.
- ③ All suction flanges (and discharge flanges for 1.5x1.5x9, 2x1.5x9, 2.5x2x9S, 2.5x2x9L, 8x6x9.5) are drilled and tapped per ANSI B16.1 Standard.
- ④ Motor feet are optional for all power module #1.
- ⑤ Dimensions apply only to units with mechanical seals. For packed stuffing box consult factory.

Single Stage End Suction Close Coupled Pumps - Model 600

DIMENSIONS – 1½ x 1½ x 9 through 3 x 2½ x 9 (continued)

DIMENSIONS DETERMINED BY MOTOR

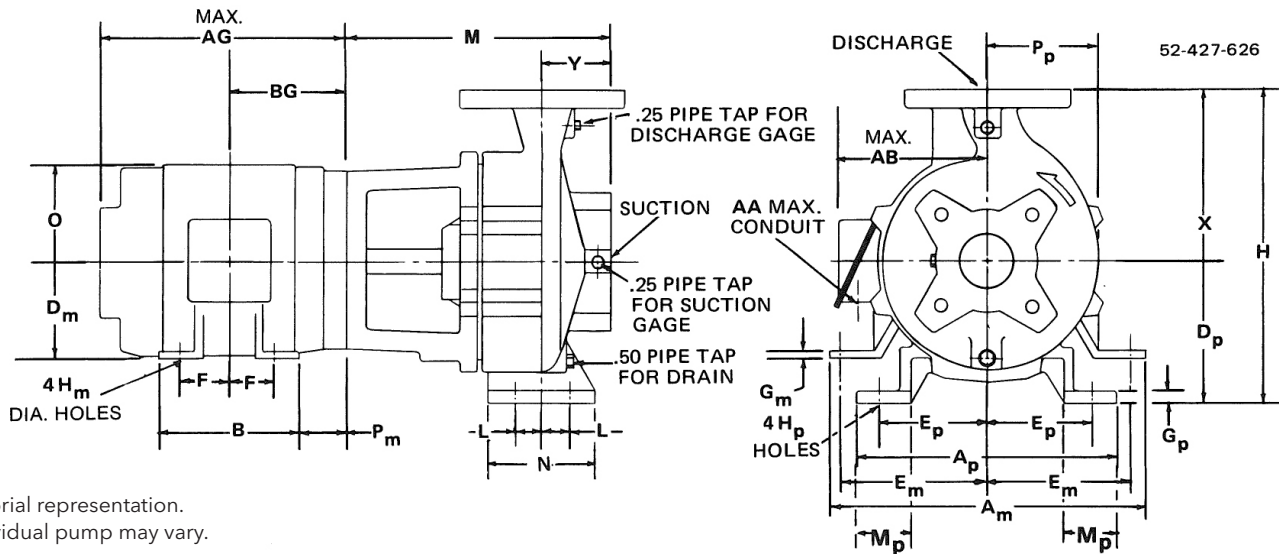
Power Module	Frame	Am	AA	AB	AG	B	BG	Dm	Em	F	Gm	Hm	O	Pm	Motor Weight
④ 1	143JP	6.50	0.75	5.62	10.76	5.00	4.88	3.50	2.75	2.00	0.38	0.34	3.50	2.38	44
	145JP	6.50	0.75	5.62	11.76	6.00	5.38	3.50	2.75	2.50	0.38	0.34	3.50	2.38	49
	182JP	9.00	0.75	6.62	12.50	6.25	5.88	4.50	3.75	2.25	0.50	0.41	4.50	2.75	79
	184JP	9.00	0.75	6.62	13.50	7.25	6.38	4.50	3.75	2.75	0.50	0.41	4.50	2.75	94
2	213JP	10.50	1.00	7.88	15.12	7.00	7.25	5.25	4.25	2.75	0.56	0.41	5.25	3.75	119
	215JP	10.50	1.00	7.88	16.62	8.50	8.00	5.25	4.25	3.50	0.56	0.41	5.25	3.75	129
	254JP	12.50	1.25	10.00	18.12	10.25	9.12	6.25	5.00	4.12	0.75	0.53	6.25	4.00	208
	256JP	12.50	1.25	10.00	19.88	12.00	10.00	6.25	5.00	5.00	0.75	0.53	6.25	4.00	238
3	284JP	14.00	1.50	10.81	20.25	12.00	9.75	7.00	5.50	4.75	0.75	0.53	7.00	3.75	288
	286JP	14.00	1.50	10.81	21.75	13.50	10.50	7.00	5.50	5.50	0.75	0.53	7.00	3.75	348
	324JP	16.00	2.00	13.25	22.75	12.75	10.75	8.00	6.25	5.25	0.88	0.62	8.00	4.38	437
	326JP	16.00	2.00	13.25	24.25	14.25	11.50	8.00	6.25	6.00	0.88	0.62	8.00	4.38	547
4	364JP	18.00	3.00	16.38	25.25	13.50	11.75	9.00	7.00	5.62	1.00	0.62	9.00	5.00	707
	365JP	18.00	3.00	16.38	26.25	14.50	12.25	9.00	7.00	6.12	1.00	0.62	9.00	5.00	767

NOT FOR CONSTRUCTION, INSTALLATION OR APPLICATION PURPOSES UNLESS CERTIFIED

Certified For:										
CO #		ID #				SO #				
PUMP DATA	Size & Type	Model	Curve No.	GPM		Head	Packing	M/S	Rotation	Flanges
									CW	125 PSI
MOTOR DATA	HP	RPM	Phase	Hertz		Volts	Frame Size	Enclosure		
			3	50	60					
Sign:							Date: _____ / _____ / _____			

Single Stage End Suction Close Coupled Pumps - Model 600

DIMENSIONS – 3 x 2½ x 13 through 8 x 6 x 11



Pictorial representation.
Individual pump may vary.

Pump size	Suct.	Disch.	Ap	Dp	Ep	Gp	L	Mp	N	H	Power Module							
											Pp	X	Y	Hp	M PM1	M PM2	M PM4	M PM8
3x2.5x13	3	2.5	15.74	9.29	6.20	0.62	2.36	3.14	6.29	20.31	7.53	11.02	3.51	0.75	-	11.58	11.56	-
4x3x6.5	4	3	11.02	6.29	4.17	0.51	1.87	2.55	4.92	14.16	5.50	7.87	3.42	0.75	10.78	11.59	11.59	-
4x3x9	4	3	13.58	7.08	5.51	0.51	1.87	2.56	4.92	16.92	6.08	9.84	3.31	0.75	10.55	11.36	11.36	11.36
4x3x11	4	3	13.97	7.93	5.51	0.57	2.36	3.14	6.29	17.77	6.75	9.84	2.84	0.75	-	10.89	-	-
4x3x13	4	3	15.74	9.84	6.20	0.62	2.36	3.14	6.29	12.24	8.00	12.40	3.21	0.75	-	11.26	11.26	-
4x4x11	4	4	15.74	8.81	6.20	0.51	2.36	3.14	6.29	19.83	7.25	11.02	3.31	0.75	-	11.36	11.36	-
6x4x9	6	4	14.37	7.87	5.51	0.51	2.36	3.14	6.29	18.89	6.75	11.02	3.71	0.75	11.01	11.82	-	-
6x4x13	6	4	15.74	9.84	6.20	0.62	2.36	3.14	6.29	22.24	8.25	12.40	3.51	0.75	-	11.56	11.56	-
6x6x9	6	6	15.74	8.81	6.20	0.51	2.36	3.14	6.29	19.83	7.02	11.02	3.80	0.75	-	11.85	11.85	-
6x6x11	6	6	15.74	8.81	6.20	0.62	2.36	3.14	6.29	19.83	6.75	11.02	3.71	0.75	-	11.76	11.76	-
6x6x13S	6	6	19.68	11.02	5.91	0.62	2.95	3.93	7.87	24.99	8.88	13.97	3.80	0.75	-	11.85	11.85	11.85
6x6x13L	6	6	19.68	11.02	5.91	0.62	2.95	3.93	7.87	24.99	8.88	13.97	3.80	0.75	-	11.85	11.85	11.85
③ 8x6x9.5	8	6	15.74	9.84	6.20	0.51	2.36	3.14	6.29	22.24	7.25	12.40	4.37	0.75	-	12.42	12.42	-
8x6x11	8	6	15.74	9.84	6.20	0.62	2.36	3.14	6.29	23.81	8.36	13.97	3.51	0.75	-	11.56	11.56	-

CAUTION: Certain pump and motor construction may result in motor feet extending below pump feet. See Dimension Dm and Dp.

- ① All Dimensions are in inches.
- ② Suction and Discharge connections are 125 psi ANSI B16.1 Standard.
- ③ All suction flanges (and discharge flanges for 1.5x1.5x9, 2x1.5x9, 2.5x2x9S, 2.5x2x9L, 8x6x9.5) are drilled and tapped per ANSI B16.1 Standard.
- ④ Motor feet are optional for all power module #1.

Single Stage End Suction Close Coupled Pumps - Model 600

DIMENSIONS – 3 x 2½ x 13 through 8 x 6 x 11 (continued)

DIMENSIONS DETERMINED BY MOTOR

Power Module	Frame	Am	AA	AB	AG	B	BG	Dm	Em	F	Gm	Hm	O	Pm	Motor Weight
④ 1	143JP	6.50	0.75	5.62	10.76	5.00	4.88	3.50	2.75	2.00	0.38	0.34	3.50	2.38	44
	145JP	6.50	0.75	5.62	11.76	6.00	5.38	3.50	2.75	2.50	0.38	0.34	3.50	2.38	49
	182JP	9.00	0.75	6.62	12.50	6.25	5.88	4.50	3.75	2.25	0.50	0.41	4.50	2.75	79
	184JP	9.00	0.75	6.62	13.50	7.25	6.38	4.50	3.75	2.75	0.50	0.41	4.50	2.75	94
2	213JP	10.50	1.00	7.88	15.12	7.00	7.25	5.25	4.25	2.75	0.56	0.41	5.25	3.75	119
	215JP	10.50	1.00	7.88	16.62	8.50	8.00	5.25	4.25	3.50	0.56	0.41	5.25	3.75	129
	254JP	12.50	1.25	10.00	18.12	10.25	9.12	6.25	5.00	4.12	0.75	0.53	6.25	4.00	208
	256JP	12.50	1.25	10.00	19.88	12.00	10.00	6.25	5.00	5.00	0.75	0.53	6.25	4.00	238
3	284JP	14.00	1.50	10.81	20.25	12.00	9.75	7.00	5.50	4.75	0.75	0.53	7.00	3.75	288
	286JP	14.00	1.50	10.81	21.75	13.50	10.50	7.00	5.50	5.50	0.75	0.53	7.00	3.75	348
	324JP	16.00	2.00	13.25	22.75	12.75	10.75	8.00	6.25	5.25	0.88	0.62	8.00	4.38	437
	326JP	16.00	2.00	13.25	24.25	14.25	11.50	8.00	6.25	6.00	0.88	0.62	8.00	4.38	547
4	364JP	18.00	3.00	16.38	25.25	13.50	11.75	9.00	7.00	5.62	1.00	0.62	9.00	5.00	707
	365JP	18.00	3.00	16.38	26.25	14.50	12.25	9.00	7.00	6.12	1.00	0.62	9.00	5.00	767

NOT FOR CONSTRUCTION, INSTALLATION OR APPLICATION PURPOSES UNLESS CERTIFIED

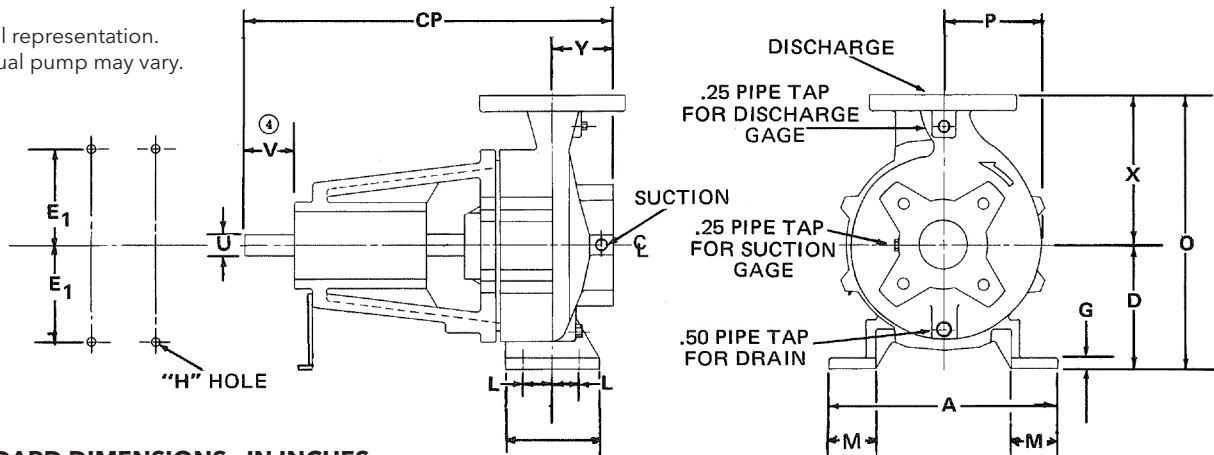
Certified For:										
CO #		ID #			SO #					
PUMP DATA	Size & Type	Model	Curve No.	GPM		Head	Packing	M/S	Rotation	Flanges
									CW	125 PSI
MOTOR DATA	HP	RPM	Phase	Hertz		Volts	Frame Size	Enclosure		
			3	50	60					
Sign: _____							Date: ____/____/____			

Single Stage End Suction Frame Mounted Pumps - Closed Impellers Grease Lubricated - Model 100

DIMENSIONS

Supersedes all previous issues.

Pictorial representation. Individual pump may vary.



STANDARD DIMENSIONS - IN INCHES

Pump Size and Type	Suct.	Disch.	Power Module	A	CP	D	E ₁	G	H	L	M	N	O	P	U		V	X	Y
															Shaft				
															Dia	Keyway			
1.5x1.5x9	1.5	1.5	3	9.56	15.92	6.29	3.74	0.51	0.56	1.36	1.96	3.74	13.37	5.52	0.88	.19X.09X1.06	1.95	7.08	2.86
2x1.5x6.5	2	1.5	3	9.56	15.55	5.19	3.74	0.50	0.56	1.39	1.96	3.93	11.48	4.00	0.88	.19X.09X1.06	1.95	6.29	2.52
2x1.5x9	2	1.5	3	9.56	15.60	6.29	3.74	0.50	0.56	1.39	1.97	3.93	13.37	5.52	0.88	.19X.09X1.06	1.95	7.08	2.60
2.5x2x6.5S	2.5	2	3	9.56	15.63	5.19	3.74	0.51	0.56	1.39	1.96	3.93	11.48	4.18	0.88	.19X.09X1.06	1.95	6.29	2.60
2.5x2x6.5L	2.5	2	3	9.56	15.63	5.19	3.74	0.51	0.56	1.39	1.96	3.93	11.48	4.18	0.88	.19X.09X1.06	1.95	6.29	2.60
2.5x2x9S	2.5	2	3	10.43	15.39	6.29	4.17	0.50	0.56	1.36	1.97	3.94	13.37	5.50	0.88	.19X.09X1.06	1.95	7.08	2.39
2.5x2x9L	2.5	2	3	10.43	15.39	6.29	4.17	0.50	0.56	1.36	1.97	3.94	13.37	5.50	0.88	.19X.09X1.06	1.95	7.08	2.39
3x2x6.5S	3	2	3	10.43	15.95	6.29	4.17	0.51	0.56	1.39	1.96	3.93	13.37	4.38	0.88	.19X.09X1.06	1.95	7.08	2.92
3x2x6.5L	3	2	3	10.43	15.95	6.29	4.17	0.51	0.56	1.39	1.96	3.93	13.37	4.38	0.88	.19X.09X1.06	1.95	7.08	2.92
3x2x9	3	2	3	10.43	15.60	6.29	4.17	0.51	0.56	1.36	1.97	3.94	14.16	5.50	0.88	.19X.09X1.06	1.95	7.87	2.60
3x2x10	3	3	3	10.43	15.60	6.29	4.17	0.51	0.56	1.36	1.97	3.94	14.16	5.50	0.88	.19X.09X1.06	1.95	7.87	2.60
3x2x11	3	2	3	12.40	15.63	7.08	4.92	0.51	0.56	1.87	2.55	4.92	15.89	6.50	0.88	.19X.09X1.06	1.95	8.81	2.60
3x2.5x11	3	2.5	3	12.79	16.24	7.08	4.92	0.51	0.56	1.87	2.55	4.92	15.89	6.56	0.88	.19X.09X1.06	1.95	8.81	3.21
3x2.5x9	3	2.5	5	12.59	22.94	7.08	4.92	0.51	0.75	1.87	2.55	4.92	15.89	5.78	1.38	.31X.16X2.06	3.12	8.81	3.21
3x2.5x13	3	2.5	5	15.74	23.24	9.29	6.20	0.62	0.75	2.36	3.14	6.29	20.31	7.53	1.38	.31X.16X2.06	3.12	11.02	3.51
4x3x6.5	4	3	5	11.02	23.27	6.29	4.17	0.51	0.75	1.87	2.55	4.92	14.16	5.50	1.38	.31X.16X2.06	3.12	7.87	3.42
4x3x9	4	3	5	13.58	23.04	7.08	5.51	0.51	0.75	1.87	2.56	4.92	16.92	6.08	1.38	.31X.16X2.06	3.12	9.84	3.31
4x3x11	4	3	5	13.97	22.57	7.93	5.51	0.57	0.75	2.36	3.14	6.29	17.77	6.75	1.38	.31X.16X2.06	3.12	9.84	2.84
4x3x13	4	3	5	15.74	22.94	9.84	6.20	0.62	0.75	2.36	3.14	6.29	22.24	8.00	1.38	.31X.16X2.06	3.12	12.40	3.21
4x4x11	4	4	5	15.74	23.04	8.81	6.20	0.51	0.75	2.36	3.14	6.29	19.83	7.25	1.38	.31X.16X2.06	3.12	11.02	3.31
6x4x9	6	4	5	14.37	23.50	7.87	5.51	0.51	0.75	2.36	3.14	6.29	18.89	6.75	1.38	.31X.16X2.06	3.12	11.02	3.71
6x4x13	6	4	5	15.74	23.24	9.84	6.20	0.62	0.75	2.36	3.14	6.29	22.24	8.25	1.38	.31X.16X2.06	3.12	12.40	3.51
6x6x9.5	6	6	5	15.74	23.53	8.81	6.20	0.51	0.75	2.36	3.14	6.29	19.83	7.02	1.38	.31X.16X2.06	3.12	11.02	3.80
6x6x11	6	6	5	15.74	23.44	8.81	6.20	0.62	0.75	2.36	3.14	6.29	19.83	6.75	1.38	.31X.16X2.06	3.12	11.02	3.71
6x6x13S	6	6	5	19.68	23.53	11.02	7.88	0.62	0.75	2.95	3.93	7.87	24.99	8.88	1.38	.31X.16X2.06	3.12	13.97	3.80
6x6x13L	6	6	5	19.68	23.53	11.02	7.88	0.62	0.75	2.95	3.93	7.87	24.99	8.88	1.38	.31X.16X2.06	3.12	13.97	3.80
8x6x9.5	8	6	5	15.74	24.10	9.84	6.20	0.51	0.75	2.36	3.14	6.29	22.24	7.25	1.38	.31X.16X2.06	3.12	12.40	4.37
8x6x11	8	6	5	15.74	23.24	9.84	6.20	0.62	0.75	2.36	3.14	6.29	23.81	8.36	1.38	.31X.16X2.06	3.12	13.97	3.51
8x6x13	8	6	6	21.45	30.70	12.40	8.81	0.62	0.75	2.95	3.93	7.87	28.14	11.38	1.62	.38X.19X2.88	4.00	15.74	4.26
10x8x13	10	8	6	21.44	31.21	14.37	8.81	0.62	0.75	2.95	3.93	7.87	31.69	13.84	1.62	.38X.19X2.88	4.00	17.32	4.77

Single Stage End Suction Frame Mounted Pumps - Closed Impellers Grease Lubricated - Model 100

DIMENSIONS *(continued)*

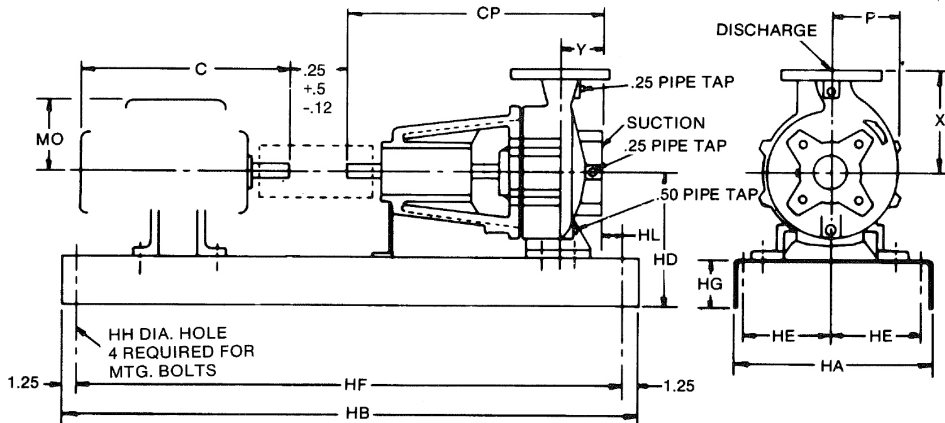
- ① All Dimensions are in inches.
- ② Suction and Discharge connections are 125 psi ANSI B16.1 Standard.
- ③ All suction flanges (and discharge flanges for 1.5x1.5x9, 2x1.5x9, 2.5x2x9S, 2.5x2x9L, 8x6x9.5) are drilled and tapped per ANSI B16.1 Standard.
- ④ V Dimension = Usable Shaft Length

NOT FOR CONSTRUCTION, INSTALLATION OR APPLICATION PURPOSES UNLESS CERTIFIED

Certified For:									
CO #		ID #			SO #				
PUMP DATA	Size & Type	Model	Curve No.	GPM	Head	Packing	M/S	Rotation	Flanges
								CW	125 PSI
Sign:							Date: ____ / ____ / ____		

Single Stage End Suction Frame Mounted Pumps (Non-Spacer Coupling) - Closed Impellers Grease Lubricated Channel Based - Model 150

DIMENSIONS – 1½ x 1½ x 9 through 2½ x 2 x 6½L



Optional Drip Rim Baseplate

.75" pipe tap for drain

When optional drip rim baseplate is required, add to the following dimensions: HA + 2.56, HB + 3.57, HD + .188, HG + .188

DIMENSIONS DETERMINED BY MOTOR ①

Motor Frame ④	Pump Size		1.5x1.5x9			2x1.5x6.5			2x1.5x9			2.5x2x6.5S			2.5x2x6.5L		
	C (Approx.)	MO	Base No.	HD	HL	Base No.	HD	HL	Base No.	HD	HL	Base No.	HD	HL	Base No.	HD	HL
143	12.25	3.75	010	8.90	0.10	010	7.80	0.44	010	8.90	0.36	010	7.80	0.36	010	7.80	0.36
145	13.25	3.75	010	8.90	0.10	010	7.80	0.44	010	8.90	0.36	010	7.80	0.36	010	7.80	0.36
182	14.12	5.31	012	9.20	0.10	012	8.10	0.44	012	9.20	0.36	012	8.10	0.36	012	8.10	0.36
184	15.12	5.31	012	9.20	0.10	012	8.10	0.44	012	9.20	0.36	012	8.10	0.36	012	8.10	0.36
213	17.50	6.0	012	9.20	0.10	012	8.40	0.44	012	9.20	0.36	012	8.40	0.36	012	8.40	0.36
215	19.00	6.0	012	9.20	0.10	012	8.40	0.44	012	9.20	0.36	012	8.40	0.36	012	8.40	0.36
254	21.37	7.12	004	9.93	0.87	-	-	-	004	9.93	1.13	004	9.96	1.13	004	9.96	1.13
256	23.12	7.12	004	9.93	0.87	-	-	-	004	9.93	1.13	-	-	-	004	9.96	1.13
284	24.62	7.75	-	-	-	-	-	-	004	10.68	1.13	-	-	-	-	-	-
286	26.12	7.75	-	-	-	-	-	-	004	10.68	1.13	-	-	-	-	-	-

BASE DIMENSIONS ①

Base No.	HA	HB	HE	HF	HG	HH
004	15.00	52.00	6.00	49.50	3.520	0.75
010	10.00	31.00	3.50	28.50	2.600	0.75
012	12.00	40.00	4.50	37.50	2.940	0.75

CAUTION: Baseplate setting (before piping), grouting procedures and final alignment must be in accordance with Xylem Goolds Water Technology Pump recommended procedures outlined in the instruction manual associated with this pump type.

DIMENSIONS DETERMINED BY PUMP ① ② ③

Pump Size	Suction	Disch.	CP	P	X	Y
1.5x1.5x9	1.5	1.5	15.92	5.52	7.08	2.86
2x1.5x6.5	2	1.5	15.55	4.00	6.29	2.52
2x1.5x9	2	1.5	15.60	5.52	7.08	2.60
2.5x2x6.5S	2.5	2	15.63	4.18	6.29	2.60
2.5x2x6.5L	2.5	2	15.63	4.18	6.29	2.60

- ① All Dimensions are in inches.
- ② Suction and Discharge connections are 125 psi ANSI B16.1 Standard.
- ③ All suction flanges (and discharge flanges for 1.5x1.5x9 and 2x1.5x9) have tapped holes.
- ④ Motor dimensions are approximate for a given NEMA frame. Consult factory if space is limited. Dimensions apply to T and TS NEMA frames.

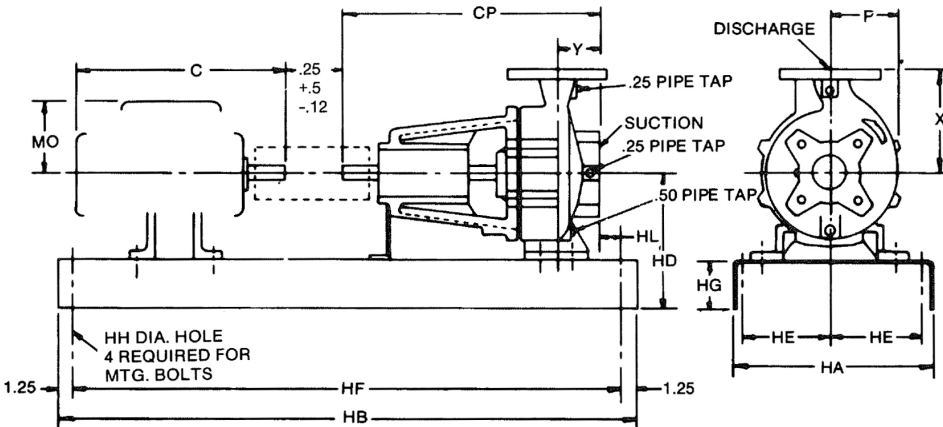
NOT FOR CONSTRUCTION, INSTALLATION OR APPLICATION PURPOSES UNLESS CERTIFIED

Certified For:									
CO #		ID #				SO #			
PUMP DATA	Size & Type	Model	Curve No.	GPM	Head	Packing	M/S	Rotation	Flanges
								CW	125 PSI
MOTOR DATA	HP	RPM	Phase	Hertz	Volts	Frame Size	Enclosure		
			3	50 60					
Sign:					Date: _____ / _____ / _____				

Single Stage End Suction Frame Mounted Pumps (Non-Spacer Coupling) - Closed Impellers Grease Lubricated Channel Based - Model 150

Supersedes all previous issues.

DIMENSIONS – 2½ x 2 x 9S through 3 x 2 x 10



Optional Drip Rim Baseplate

.75" pipe tap for drain

When optional drip rim baseplate is required, add to the following dimensions: HA + 2.56, HB + 3.57, HD + .188, HG + .188

DIMENSIONS DETERMINED BY MOTOR ①

Motor Frame ④	Pump Size		2.5x2x9S			2.5x2x9L			3x2x6.5S			3x2x6.5L			3x2x9			3x2x10		
	C (Approx.)	MO	Base No.	HD	HL	Base No.	HD	HL	Base No.	HD	HL	Base No.	HD	HL	Base No.	HD	HL	Base No.	HD	HL
143	12.25	3.75	011	9.20	0.59	011	9.20	0.59	011	9.20	0.06	011	9.20	0.06	011	9.20	0.38	011	9.20	0.38
145	13.25	3.75	011	9.20	0.59	011	9.20	0.59	011	9.20	0.06	011	9.20	0.06	011	9.20	0.38	011	9.20	0.38
182	14.12	5.30	011	9.20	0.59	011	9.20	0.59	011	9.20	0.06	011	9.20	0.06	011	9.20	0.38	011	9.20	0.38
184	15.12	5.31	011	9.20	0.59	011	9.20	0.59	011	9.20	0.06	011	9.20	0.06	011	9.20	0.38	011	9.20	0.38
213	17.50	6.00	012	9.20	0.59	012	9.20	0.59	012	9.20	0.06	012	9.20	0.06	012	9.20	0.38	012	9.20	0.38
215	19.00	6.00	012	9.20	0.59	012	9.20	0.59	012	9.20	0.06	012	9.20	0.06	012	9.20	0.38	012	9.20	0.38
254	21.37	7.12	014	9.70	0.59	014	9.70	0.59	014	9.70	0.06	014	9.70	0.06	014	9.70	0.38	014	9.70	0.38
256	23.12	7.12	014	9.70	0.59	014	9.70	0.59	014	9.70	0.06	014	9.70	0.06	014	9.70	0.38	014	9.70	0.38
284	24.62	7.75	004	10.68	1.34	004	10.68	1.34	004	10.68	0.81	004	10.68	0.81	004	10.68	1.13	004	10.68	1.13
286	26.12	7.75	004	10.68	1.34	004	10.68	1.34	004	10.68	0.81	004	10.68	0.81	004	10.68	1.38	004	10.68	1.38
324	27.75	8.62	-	-	-	005	12.13	2.63	-	-	-	-	-	-	005	12.13	2.63	005	12.13	2.63
326	29.25	8.62	-	-	-	005	12.13	2.84	-	-	-	-	-	-	005	12.13	2.63	005	12.13	2.63

CAUTION: Baseplate setting (before piping), grouting procedures and final alignment must be in accordance with Xylem Goulds Water Technology Pump recommended procedures outlined in the instruction manual associated with this pump type.

DIMENSIONS DETERMINED BY PUMP ① ② ③

Pump Size	Suction	Disch.	CP	P	X	Y
2.5x2x9S	2.5	2	15.39	5.50	7.08	2.39
2.5x2x9L	2.5	2	15.39	5.50	7.08	2.39
3x2x6.5S	3	2	15.95	4.38	7.08	2.92
3x2x6.5L	3	2	15.95	4.38	7.08	2.92
3x2x9	3	2	15.60	5.50	7.87	2.60
3x2x10	3	2	15.60	5.50	7.87	2.60

- ① All Dimensions are in inches.
- ② Suction and Discharge connections are 125 psi ANSI B16.1 Standard.
- ③ All suction flanges (and discharge flanges for 2.5x2x9S and 2.5x2x9L) have tapped holes.
- ④ Motor dimensions are approximate for a given NEMA frame. Consult factory if space is limited. Dimensions apply to T and TS NEMA frames.

BASE DIMENSIONS ①

Base No.	HA	HB	HE	HF	HG	HH
004	15.00	52.00	6.00	49.50	3.520	0.75
005	18.00	58.00	7.50	55.50	4.000	1.00
011	12.00	33.00	4.50	30.50	2.940	0.75
012	12.00	40.00	4.50	37.50	2.940	0.75
014	15.00	45.00	6.00	42.50	3.400	0.75

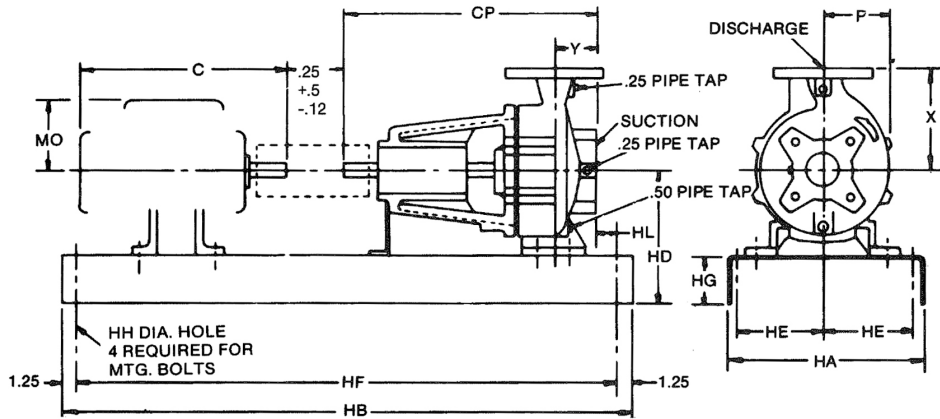
NOT FOR CONSTRUCTION, INSTALLATION OR APPLICATION PURPOSES UNLESS CERTIFIED

Certified For:										
CO #		ID #				SO #				
PUMP DATA	Size & Type	Model	Curve No.	GPM	Head	Packing	M/S	Rotation	Flanges	
								CW	125 PSI	
MOTOR DATA	HP	RPM	Phase	Hertz	Volts	Frame Size	Enclosure			
			3	50 60						
Sign:						Date: ____/____/____				

Single Stage End Suction Frame Mounted Pumps (Non-Spacer Coupling) - Closed Impellers Grease Lubricated Channel Based - Model 150

Supersedes all previous issues.

DIMENSIONS – 3 x 2 x 11 through 4 x 3 x 6½



Optional Drip Rim Baseplate

.75" pipe tap for drain

When optional drip rim baseplate is required, add to the following dimensions: HA + 2.56, HB + 3.57, HD + .188, HG + .188

DIMENSIONS DETERMINED BY MOTOR ①

Motor Frame ④	Pump Size			3x2x11			3x2.5x11			3x2.5x9			3x2.5x13			4x3x6.5		
	C (Approx.)	MO	Base No.	HD	HL	Base No.	HD	HL	Base No.	HD	HL	Base No.	HD	HL	Base No.	HD	HL	
143	12.25	3.75	013	10.50	0.86	013	10.50	0.25	013	10.50	0.25	-	-	-	003	9.45	0.31	
145	13.25	3.75	013	10.50	0.86	013	10.50	0.25	013	10.50	0.25	-	-	-	003	9.45	0.31	
182	14.12	5.31	013	10.50	0.86	013	10.50	0.25	013	10.50	0.25	016	13.20	0.89	003	9.45	0.31	
184	15.12	5.31	013	10.50	0.86	013	10.50	0.25	013	10.50	0.25	016	13.20	0.89	003	9.45	0.31	
213	17.50	6.00	013	10.50	0.86	013	10.50	0.25	014	10.50	0.25	016	13.20	0.89	004	9.80	0.31	
215	19.00	6.80	013	10.50	0.86	013	10.50	0.25	014	10.50	0.25	016	13.20	0.89	004	9.80	0.31	
254	21.37	7.12	004	10.61	1.13	004	10.61	0.50	004	10.61	0.50	016	13.20	0.89	004	9.93	0.31	
256	23.12	7.12	004	10.61	1.13	004	10.61	0.50	004	10.61	0.50	016	13.20	0.89	004	9.93	0.31	
284	24.62	7.75	-	-	-	-	-	-	005	11.22	2.00	016	13.20	0.89	005	11.16	1.81	
286	26.12	7.75	-	-	-	-	-	-	005	11.22	2.00	016	13.20	0.89	005	11.16	1.81	
324	27.75	8.62	-	-	-	-	-	-	005	12.22	2.00	-	-	-	005	12.20	1.81	
326	29.25	8.62	-	-	-	-	-	-	005	12.22	2.00	-	-	-	-	-	-	
364	30.87	9.12	-	-	-	-	-	-	007	13.13	2.00	-	-	-	-	-	-	
365	31.87	9.12	-	-	-	-	-	-	007	13.13	2.00	-	-	-	-	-	-	

CAUTION: Baseplate setting (before piping), grouting procedures and final alignment must be in accordance with Xylem Goolds Water Technology Pump recommended procedures outlined in the instruction manual associated with this pump type.

DIMENSIONS DETERMINED BY PUMP ① ② ③

Pump Size	Suction	Disch.	CP	P	X	Y
3x2x11	3	2	15.63	6.50	8.81	2.60
3x2.5x11	3	2.5	16.24	6.56	8.81	3.21
3x2.5x9	3	2.5	22.94	5.78	8.81	3.21
3x2.5x13	3	2.5	23.24	7.53	11.02	3.51
4x3x6.5	4	3	23.27	5.50	7.87	3.42

- ① All Dimensions are in inches.
- ② Suction and Discharge connections are 125 psi ANSI B16.1 Standard.
- ③ All suction flanges have tapped holes.
- ④ Motor dimensions are approximate for a given NEMA frame. Consult factory if space is limited. Dimensions apply to T and TS NEMA frames.

BASE DIMENSIONS ①

Base No.	HA	HB	HE	HF	HG	HH
003	12.00	45.00	4.50	42.50	3.170	0.75
004	15.00	52.00	6.00	49.50	3.520	0.75
005	18.00	58.00	7.50	55.50	4.000	1.00
007	22.00	68.00	9.50	65.50	4.000	1.00
013	15.00	38.00	6.00	35.50	3.400	0.75
014	15.00	45.00	6.00	42.50	3.400	0.75
016	18.00	51.00	7.50	48.50	3.950	1.00

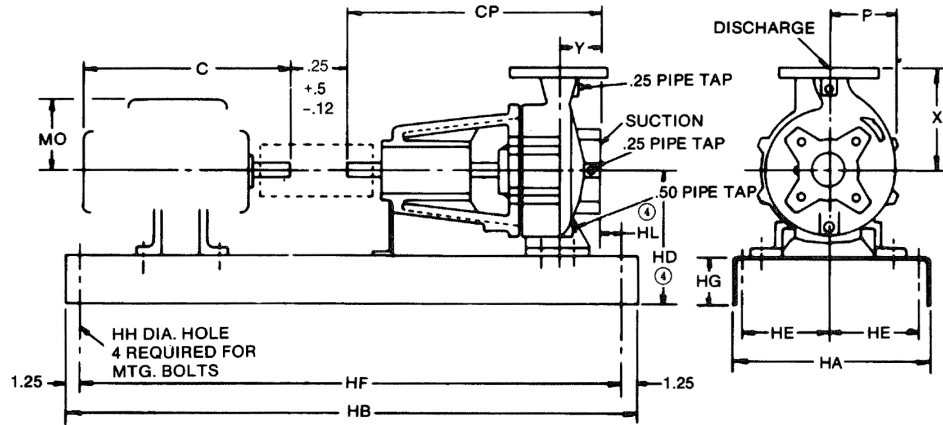
NOT FOR CONSTRUCTION, INSTALLATION OR APPLICATION PURPOSES UNLESS CERTIFIED

Certified For:									
CO #		ID #				SO #			
PUMP DATA	Size & Type	Model	Curve No.	GPM	Head	Packing	M/S	Rotation	Flanges
								CW	125 PSI
MOTOR DATA	HP	RPM	Phase	Hertz	Volts	Frame Size	Enclosure		
			3	50 60					
Sign:						Date: ____/____/____			

Single Stage End Suction Frame Mounted Pumps (Non-Spacer Coupling) - Closed Impellers Grease Lubricated Channel Based - Model 150

Supersedes all previous issues.

DIMENSIONS – 4 x 3 x 9 through 6 x 4 x 9



Optional Drip Rim Baseplate

.75" pipe tap for drain

When optional drip rim baseplate is required, add to the following dimensions: HA + 2.56, HB + 3.57, HD + .188, HG + .188

DIMENSIONS DETERMINED BY MOTOR ①

Motor Frame ④	Pump Size		4x3x9			4x3x11			4x3x13			4x4x11			6x4x9		
	C (Approx.)	MO	Base No. ④	HD ④	HL ④	Base No. ④	HD ④	HL ④	Base No. ④	HD ④	HL ④	Base No. ④	HD ④	HL ④	Base No. ④	HD ④	HL ④
182	14.12	5.31	013	10.50	0.65	014	11.30	1.31	016	13.80	1.19	016	12.80	1.09	014	11.30	0.44
184	15.12	5.31	013	10.50	0.65	014	11.30	1.31	016	13.80	1.19	016	12.80	1.09	014	11.30	0.44
213	17.50	6.00	014	10.50	0.65	014	11.30	1.31	016	13.80	1.19	016	12.80	1.09	014	11.30	0.44
215	19.00	6.00	014	10.50	0.65	014	11.30	1.31	016	13.80	1.19	016	12.80	1.09	014	11.30	0.44
254	21.37	7.12	004	10.61	0.41	015	11.30	1.31	016	13.80	1.19	016	12.80	1.09	015	11.30	0.44
256	23.12	7.12	004	10.61	0.41	015	11.30	1.31	016	13.80	1.19	016	12.80	1.09	015	11.30	0.44
284	24.62	7.75	005	11.22	1.91	-	-	-	016	13.80	1.19	016	12.80	1.09	-	-	-
286	26.12	7.75	005	11.22	1.91	-	-	-	016	13.80	1.19	016	12.80	1.09	-	-	-
324	27.75	8.62	005	12.22	1.91	-	-	-	006	13.84	2.00	006	13.94	1.91	-	-	-
326	29.25	8.62	005	12.22	1.91	-	-	-	006	13.84	2.00	006	13.94	1.91	-	-	-
364	30.87	9.25	007	13.13	1.91	-	-	-	-	-	-	-	-	-	-	-	-
365	31.87	9.25	007	13.13	1.91	-	-	-	-	-	-	-	-	-	-	-	-
404	36.38	10.37	007	14.13	1.91	-	-	-	-	-	-	-	-	-	-	-	-
405	37.88	10.37	007	14.13	1.91	-	-	-	-	-	-	-	-	-	-	-	-

CAUTION: Baseplate setting (before piping), grouting procedures and final alignment must be in accordance with Xylem Goolds Water Technology Pump recommended procedures outlined in the instruction manual associated with this pump type.

DIMENSIONS DETERMINED BY PUMP ① ② ③

Pump Size	Suction	Disch.	CP	P	X	Y
4x3x9	4	3	23.04	6.08	9.84	3.31
4x3x11	4	3	22.57	6.75	9.84	2.84
4x3x13	4	3	22.94	8.00	12.40	3.21
4x4x11	4	4	23.04	7.25	11.02	3.31
6x4x9	6	4	23.50	6.75	11.02	3.72

- ① All Dimensions are in inches.
- ② Suction and Discharge connections are 125 psi ANSI B16.1 Standard.
- ③ All suction flanges have tapped holes.
- ④ Motor dimensions are approximate for a given NEMA frame. Consult factory if space is limited. Dimensions apply to T and TS NEMA frames.

BASE DIMENSIONS ①

Base No.	HA	HB	HE	HF	HG	HH
013	15.00	38.00	6.00	35.50	3.400	0.75
014	15.00	45.00	6.00	42.50	3.400	0.75
015	15.00	48.00	6.00	45.50	3.400	0.75
016	18.00	51.00	7.50	48.50	3.950	1.00
004	15.00	52.00	6.00	49.50	3.520	0.75
005	18.00	58.00	7.50	55.50	4.000	1.00
006	18.00	66.00	7.50	63.50	4.000	1.00
007	22.00	68.00	9.50	65.50	4.000	1.00

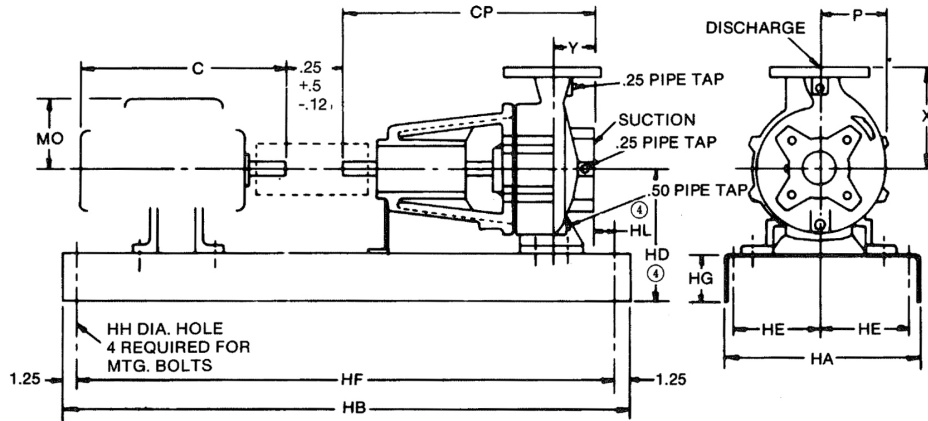
NOT FOR CONSTRUCTION, INSTALLATION OR APPLICATION PURPOSES UNLESS CERTIFIED

Certified For:									
CO #		ID #				SO #			
PUMP DATA	Size & Type	Model	Curve No.	GPM	Head	Packing	M/S	Rotation	Flanges
								CW	125 PSI
MOTOR DATA	HP	RPM	Phase	Hertz	Volts	Frame Size	Enclosure		
			3	50 60					
Sign:					Date: ____/____/____				

Single Stage End Suction Frame Mounted Pumps (Non-Spacer Coupling) - Closed Impellers Grease Lubricated Channel Based - Model 150

Supersedes all previous issues.

DIMENSIONS – 6 x 4 x 13 through 6 x 6 x 13L



Optional Drip Rim Baseplate

.75" pipe tap for drain

When optional drip rim baseplate is required, add to the following dimensions: HA + 2.56, HB + 3.57, HD + .188, HG + .188

DIMENSIONS DETERMINED BY MOTOR ①

Motor Frame ④	Pump Size		6x4x13			6x6x9.5			6x6x11			6x6x13S			6x6x13L		
	C (Approx.)	MO	Base No.	HD ④	HL ④	Base No.	HD ④	HL ④	Base No.	HD ④	HL ④	Base No.	HD ④	HL ④	Base No.	HD ④	HL ④
182	14.12	5.31	016	13.80	0.89	016	12.80	0.600	016	12.80	0.69	-	-	-	-	-	-
184	15.12	5.31	016	13.80	0.89	016	12.80	0.600	016	12.80	0.69	-	-	-	-	-	-
213	17.50	6.00	016	13.80	0.89	016	12.80	0.600	016	12.80	0.69	007	15.00	1.41	007	15.00	1.41
215	19.00	6.00	016	13.80	0.89	016	12.80	0.600	016	12.80	0.69	007	15.00	1.41	007	15.00	1.41
254	21.37	7.12	016	13.80	0.89	016	12.80	0.600	016	12.80	0.69	007	15.00	1.41	007	15.00	1.41
256	23.12	7.12	016	13.80	0.89	016	12.80	0.600	016	12.80	0.69	007	15.00	1.41	007	15.00	1.41
284	24.62	7.75	016	13.80	0.89	016	12.80	0.600	016	12.80	0.69	007	15.00	1.41	007	15.00	1.41
286	26.12	7.75	016	13.80	0.89	016	12.80	0.600	016	12.80	0.69	007	15.00	1.41	007	15.00	1.41
324	27.75	8.62	006	13.84	1.72	-	-	-	006	13.94	1.50	007	15.00	1.41	007	15.00	1.41
326	29.25	8.62	006	13.84	1.72	-	-	-	006	13.94	1.50	007	15.00	1.41	007	15.00	1.41
364	30.87	9.12	-	-	-	-	-	-	-	-	-	007	15.00	1.41	007	15.00	1.41
365	31.87	9.12	-	-	-	-	-	-	-	-	-	007	15.00	1.41	007	15.00	1.41

CAUTION: Baseplate setting (before piping), grouting procedures and final alignment must be in accordance with Xylem Goolds Water Technology Pump recommended procedures outlined in the instruction manual associated with this pump type.

DIMENSIONS DETERMINED BY PUMP ① ② ③

Pump Size	Suction	Disch.	CP	P	X	Y
6x4x13	6	4	23.24	8.25	12.40	3.51
6x6x9.5	6	6	23.53	7.02	11.02	3.80
6x6x11	6	6	23.44	6.75	11.02	3.71
6x6x13S	6	6	23.53	8.88	13.97	3.80
6x6x13L	6	6	23.53	8.88	13.97	3.80

- ① All Dimensions are in inches.
- ② Suction and Discharge connections are 125 psi ANSI B16.1 Standard.
- ③ All suction flanges have tapped holes.
- ④ Motor dimensions are approximate for a given NEMA frame. Consult factory if space is limited. Dimensions apply to T and TS NEMA frames.

BASE DIMENSIONS ①

Base No.	HA	HB	HE	HF	HG	HH
016	18.00	51.00	7.50	48.50	3.950	1.00
006	18.00	66.00	7.50	63.50	4.000	1.00
007	22.00	68.00	9.50	65.50	4.000	1.00

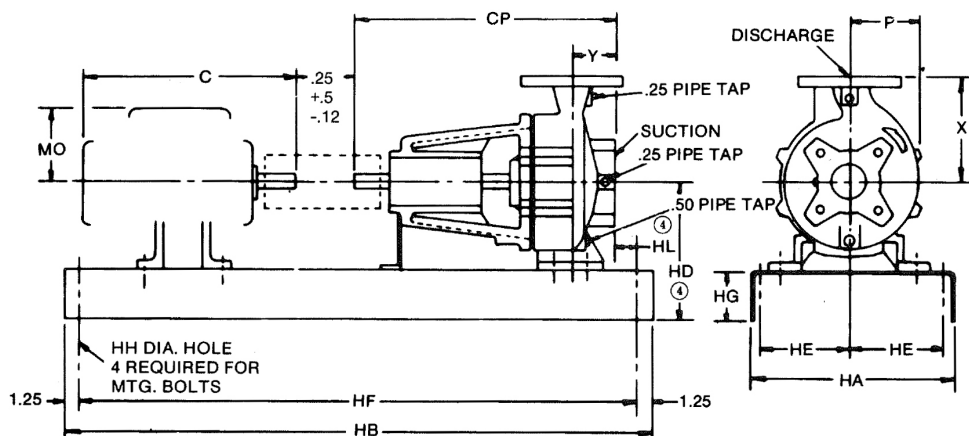
NOT FOR CONSTRUCTION, INSTALLATION OR APPLICATION PURPOSES UNLESS CERTIFIED

Certified For:									
CO #		ID #				SO #			
PUMP DATA	Size & Type	Model	Curve No.	GPM	Head	Packing	M/S	Rotation	Flanges
								CW	125 PSI
MOTOR DATA	HP	RPM	Phase	Hertz	Volts	Frame Size	Enclosure		
			3	50 60					
Sign:						Date: ____/____/____			

Single Stage End Suction Frame Mounted Pumps (Non-Spacer Coupling) - Closed Impellers Grease Lubricated Channel Based - Model 150

Supersedes all previous issues.

DIMENSIONS – 8 x 6 x 9½ through 10 x 8 x 13



Optional Drip Rim Baseplate

.75" pipe tap for drain

When optional drip rim baseplate is required, add to the following dimensions: HA + 2.56, HB + 3.57, HD + .188, HG + .188

DIMENSIONS DETERMINED BY MOTOR ①

Motor Frame ④	Pump Size		8x6x9.5			8x6x11			8x6x13			10x8x13		
	C (Approx.)	MO	Base No.	HD ④	HL ④	Base No.	HD ④	HL ④	Base No.	HD ④	HL ④	Base No.	HD ④	HL ④
213	17.50	6.00	016	13.80	0.03	016	13.80	0.89	-	-	-	-	-	-
215	19.00	6.00	016	13.80	0.03	016	13.80	0.89	-	-	-	-	-	-
254	21.37	7.12	016	13.80	0.03	016	13.80	0.89	007	16.41	0.97	-	-	-
256	23.12	7.12	016	13.80	0.03	016	13.80	0.89	007	16.41	0.97	-	-	-
284	24.62	7.75	016	13.80	0.03	016	13.80	0.89	007	16.41	0.97	007	18.38	0.44
286	26.12	7.75	016	13.80	0.03	016	13.80	0.89	007	16.41	0.97	007	18.38	0.44
324	27.75	8.62	006	13.84	0.84	006	13.84	1.72	007	16.41	0.97	007	18.38	0.44
326	29.25	8.62	006	13.84	0.84	006	13.84	1.72	007	16.41	0.97	007	18.38	0.44
364	30.87	9.12	-	-	-	-	-	-	007	16.41	0.97	007	18.38	0.44
365	31.87	9.12	-	-	-	-	-	-	007	16.41	0.97	007	18.38	0.44
404	36.37	10.37	-	-	-	-	-	-	007	16.41	0.97	007	18.38	0.44
405	37.97	10.37	-	-	-	-	-	-	007	16.41	0.97	007	18.38	0.44
444	42.25	11.75	-	-	-	-	-	-	007	16.41	0.97	007	18.38	0.44
445	44.25	11.75	-	-	-	-	-	-	007	16.41	0.97	007	18.38	0.44

CAUTION: Baseplate setting (before piping), grouting procedures and final alignment must be in accordance with Xylem Goolds Water Technology Pump recommended procedures outlined in the instruction manual associated with this pump type.

DIMENSIONS DETERMINED BY PUMP ① ② ③

Pump Size	Suction	Disch.	CP	P	X	Y
8x6x9.5	8	6	24.12	7.25	12.40	4.37
8x6x11	8	6	23.24	8.36	13.97	3.51
8x6x13	8	6	30.70	11.38	15.74	4.26
10x8x13	10	8	31.21	13.84	17.32	4.77

- ① All Dimensions are in inches.
- ② Suction and discharge connections are at 125psi ANSI B16.1 Standard flanges.
- ③ All suction flanges (and discharge flanges for 8x6x9.5) have tapped holes per ANSI B16.1 Standard.
- ④ Motor dimensions are approximate for a given NEMA frame. Consult factory if space is limited. Dimensions apply to T and TS NEMA frames.

BASE DIMENSIONS ①

Base No.	HA	HB	HE	HF	HG	HH
016	18.00	51.00	7.50	48.50	3.950	1.00
005	18.00	58.00	7.50	55.50	4.000	1.00
006	18.00	66.00	7.50	63.50	4.000	1.00
007	22.00	68.00	9.50	65.50	4.000	1.00

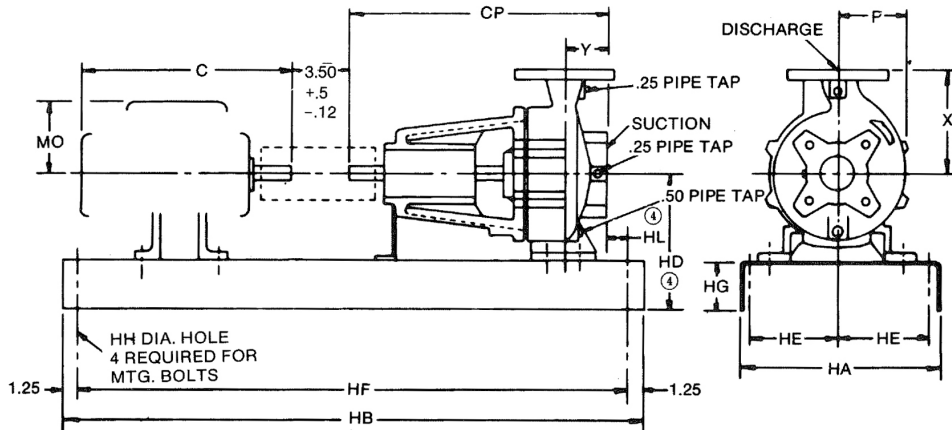
NOT FOR CONSTRUCTION, INSTALLATION OR APPLICATION PURPOSES UNLESS CERTIFIED

Certified For:									
CO #		ID #				SO #			
PUMP DATA	Size & Type	Model	Curve No.	GPM	Head	Packing	M/S	Rotation	Flanges
								CW	125 PSI
MOTOR DATA	HP	RPM	Phase	Hertz	Volts	Frame Size	Enclosure		
			3	50 60					
Sign:					Date: ____/____/____				

Single Stage End Suction Frame Mounted Pumps (Spacer Coupling) - Closed Impellers Grease Lubricated Channel Based - Model 150

Supersedes all previous issues.

DIMENSIONS – 1½ x 1½ x 9 through 2½ x 2 x 6½L



Optional Drip Rim Baseplate

.75" pipe tap for drain

When optional drip rim baseplate is required, add to the following dimensions: HA + 2.56, HB + 3.57, HD + .188, HG + .188

DIMENSIONS DETERMINED BY MOTOR ①

Motor Frame ④	Pump Size		1.5x1.5x9			2x1.5x6.5			2x1.5x9			2.5x2x6.5S			2.5x2x6.5L		
	C (Approx.)	MO	Base No.	HD ④	HL ④	Base No.	HD ④	HL ④	Base No.	HD ④	HL ④	Base No.	HD ④	HL ④	Base No.	HD ④	HL ④
143	12.25	3.75	002	9.45	0.87	002	9.48	1.19	002	9.45	1.13	002	9.48	1.13	002	9.48	1.13
145	13.25	3.75	002	9.45	0.87	002	9.48	1.19	002	9.45	1.13	002	9.48	1.13	002	9.48	1.13
182	14.12	5.31	002	9.45	0.87	002	9.48	1.19	002	9.45	1.13	002	9.48	1.13	002	9.48	1.13
184	15.12	5.31	002	9.45	0.87	002	9.48	1.19	002	9.45	1.13	002	9.48	1.13	002	9.48	1.13
213	17.50	6.00	002	9.45	0.87	002	9.48	1.19	002	9.45	1.13	002	9.48	1.13	002	9.48	1.13
215	19.00	6.00	002	9.45	0.87	002	9.48	1.19	002	9.45	1.13	002	9.48	1.13	002	9.48	1.13
254	21.37	7.12	004	9.93	0.87	-	-	-	004	9.93	1.13	004	9.96	1.13	004	9.96	1.13
256	23.12	7.12	004	9.93	0.87	-	-	-	004	9.93	1.13	-	-	-	004	9.96	1.13
284	24.62	7.75	-	-	-	-	-	-	004	10.68	1.13	-	-	-	-	-	-
286	26.12	7.75	-	-	-	-	-	-	004	10.68	1.13	-	-	-	-	-	-

CAUTION: Baseplate setting (before piping), grouting procedures and final alignment must be in accordance with Xylem Goolds Water Technology Pump recommended procedures outlined in the instruction manual associated with this pump type.

DIMENSIONS DETERMINED BY PUMP ① ② ③

Pump Size	Suction	Disch.	CP	P	X	Y
1.5x1.5x9	1.5	1.5	15.92	5.52	7.08	2.86
2x1.5x6.5	2	1.5	15.55	4.00	6.29	2.52
2x1.5x9	2	1.5	15.60	5.52	7.08	2.60
2.5x2x6.5S	2.5	2	15.63	4.18	6.29	2.60
2.5x2x6.5L	2.5	2	15.63	4.18	6.29	2.60

- ① All Dimensions are in inches.
- ② Suction and discharge connections are 125 psi ANSI B16.1 Standard flanges.
- ③ All suction flanges (and discharge flanges for 1.5x1.5x9 and 2x1.5x9) have tapped holes.
- ④ Motor dimensions are approximate for a given NEMA frame. Consult factory if space is limited. Dimensions apply to T, TS, U and US NEMA frames.

BASE DIMENSIONS ①

Base No.	HA	HB	HE	HF	HG	HH
002	12.00	39.00	4.50	36.50	3.170	0.75
004	15.00	52.00	6.00	49.50	3.520	0.75

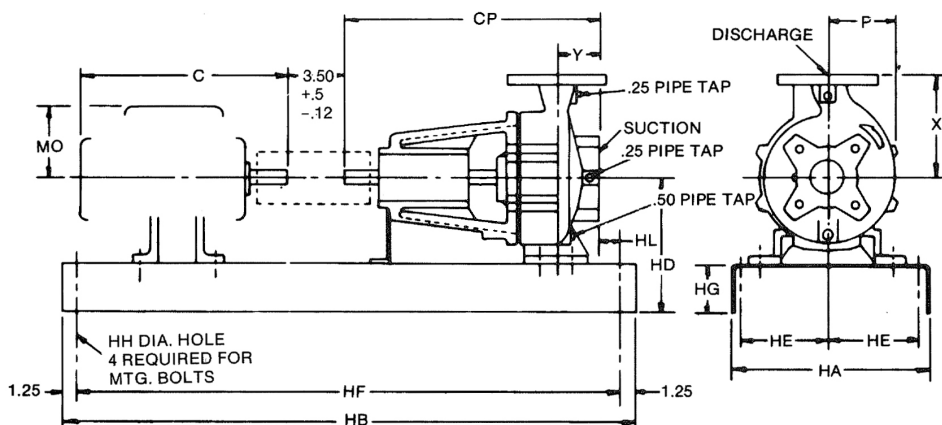
NOT FOR CONSTRUCTION, INSTALLATION OR APPLICATION PURPOSES UNLESS CERTIFIED

Certified For:									
CO #		ID #				SO #			
PUMP DATA	Size & Type	Model	Curve No.	GPM	Head	Packing	M/S	Rotation	Flanges
								CW	125 PSI
MOTOR DATA	HP	RPM	Phase	Hertz		Volts	Frame Size	Enclosure	
			3	50	60				
Sign:							Date: ____/____/____		

Single Stage End Suction Frame Mounted Pumps (Spacer Coupling) - Closed Impellers Grease Lubricated Channel Based - Model 150

Supersedes all previous issues.

DIMENSIONS – 2½ x 2 x 9S through 3 x 2 x 10



Optional Drip Rim Baseplate

.75" pipe tap for drain

When optional drip rim baseplate is required, add to the following dimensions: HA + 2.56, HB + 3.57, HD + .188, HG + .188

DIMENSIONS DETERMINED BY MOTOR ①

Motor Frame ④	Pump Size		2.5x2x9S			2.5x2x9L			3x2x6.5S			3x2x6.5L			3x2x9			3x2x10		
	C (Approx.)	MO	Base No.	HD	HL	Base No.	HD	HL	Base No.	HD	HL	Base No.	HD	HL	Base No.	HD	HL	Base No.	HD	HL
143	12.25	3.75	002	9.45	1.34	002	9.45	1.34	002	9.45	0.81	002	9.45	0.81	002	9.45	1.13	002	9.45	1.13
145	13.25	3.75	002	9.45	1.34	002	9.45	1.34	002	9.45	0.81	002	9.45	0.81	002	9.45	1.13	002	9.45	1.13
182	14.12	5.31	002	9.45	1.34	002	9.45	1.34	002	9.45	0.81	002	9.45	0.81	002	9.45	1.13	002	9.45	1.13
184	15.12	5.31	002	9.45	1.34	002	9.45	1.34	002	9.45	0.81	002	9.45	0.81	002	9.45	1.13	002	9.45	1.13
213	17.50	6.00	002	9.45	1.34	002	9.45	1.34	002	9.45	0.81	002	9.45	0.81	002	9.45	1.13	002	9.45	1.13
215	19.00	6.00	002	9.45	1.34	002	9.45	1.34	002	9.45	0.81	002	9.45	0.81	002	9.45	1.13	002	9.45	1.13
254	21.37	7.12	004	9.93	1.34	004	9.93	1.34	004	9.93	0.81	004	9.93	0.81	004	9.93	1.13	004	9.93	1.13
256	23.12	7.12	004	9.93	1.34	004	9.93	1.34	004	9.93	0.81	004	9.93	0.81	004	9.93	1.13	004	9.93	1.13
284	24.62	7.75	004	10.68	1.34	004	10.68	1.34	004	10.68	0.81	004	10.68	0.81	004	10.68	1.13	004	10.68	1.13
286	26.12	7.75	004	10.68	1.34	004	10.68	1.34	004	10.68	0.81	004	10.68	0.81	004	10.68	1.13	004	10.68	1.13
324	27.75	8.62	-	-	-	005	12.13	2.84	-	-	-	-	-	-	005	12.13	2.63	005	12.13	2.63
326	29.25	8.62	-	-	-	005	12.13	2.84	-	-	-	-	-	-	005	12.13	2.63	005	12.13	2.63

CAUTION: Baseplate setting (before piping), grouting procedures and final alignment must be in accordance with Xylem Goolds Water Technology Pump recommended procedures outlined in the instruction manual associated with this pump type.

DIMENSIONS DETERMINED BY PUMP ① ② ③

Pump Size	Suction	Disch.	CP	P	X	Y
2.5x2x9S	2.5	2	15.39	5.50	7.08	2.39
2.5x2x9L	2.5	2	15.39	5.50	7.08	2.39
3x2x6.5S	3	2	15.95	4.38	7.08	2.00
3x2x6.5L	3	2	15.95	4.38	7.08	2.92
3x2x9	3	2	15.60	5.50	7.87	2.60
3x2x10	3	2	15.60	5.50	7.87	2.60

- ① All Dimensions are in inches.
- ② Suction and discharge connections are at 125psi ANSI B16.1 Standard flanges.
- ③ All suction flanges (and discharge flanges for 2.5x2x9S and 2.5x2x9L) have tapped holes.
- ④ Motor dimensions are approximate for a given NEMA frame. Consult factory if space is limited. Dimensions apply to T, TS, U and US NEMA frames.

BASE DIMENSIONS ①

Base No.	HA	HB	HE	HF	HG	HH
002	12.00	39.00	4.50	36.50	3.170	0.75
004	15.00	52.00	6.00	49.50	3.520	0.75
005	18.00	58.00	7.50	55.50	4.000	1.00

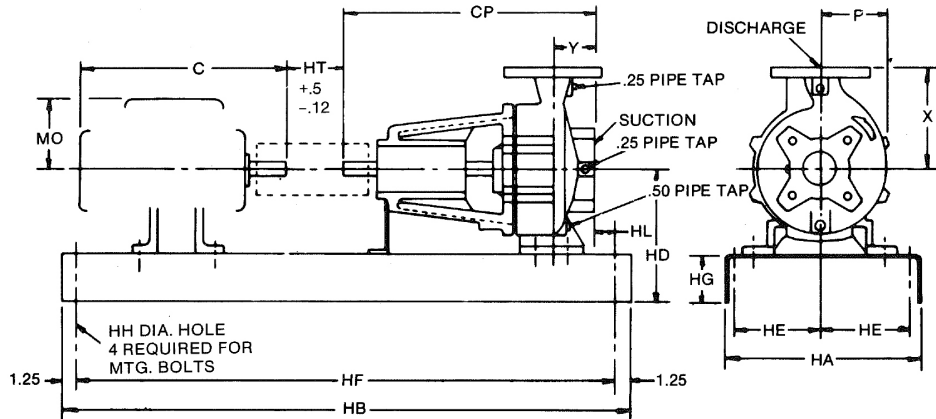
NOT FOR CONSTRUCTION, INSTALLATION OR APPLICATION PURPOSES UNLESS CERTIFIED

Certified For:									
CO #		ID #				SO #			
PUMP DATA	Size & Type	Model	Curve No.	GPM	Head	Packing	M/S	Rotation	Flanges
								CW	125 PSI
MOTOR DATA	HP	RPM	Phase	Hertz	Volts	Frame Size	Enclosure		
			3	50 60					
Sign:					Date: ____/____/____				

Single Stage End Suction Frame Mounted Pumps (Spacer Coupling) - Closed Impellers Grease Lubricated Channel Based - Model 150

Supersedes all previous issues.

DIMENSIONS – 3 x 2 x 11 through 4 x 3 x 6½



Optional Drip Rim Baseplate

.75" pipe tap for drain

When optional drip rim baseplate is required, add to the following dimensions: HA + 2.56, HB + 3.57, HD + .188, HG + .188

DIMENSIONS DETERMINED BY MOTOR ①

Motor Frame ④	Pump Size			3x2x11			3x2.5x11			3x2.5x9			3x2.5x13			4x3x6.5		
	C (Approx.)	MO	HT	Base No.	HD	HL	Base No.	HD	HL	Base No.	HD	HL	Base No.	HD	HL	Base No.	HD	HL
143	12.25	3.75	004	10.61	1.13	004	10.61	0.50	004	10.61	0.50	-	-	-	003	9.45	0.31	
145	13.25	3.75	004	10.61	1.13	004	10.61	0.50	004	10.61	0.50	-	-	-	003	9.45	0.31	
182	14.12	5.31	004	10.61	1.13	004	10.61	0.50	004	10.61	0.50	005	13.90	1.72	003	9.45	0.31	
184	15.12	5.31	004	10.61	1.13	004	10.61	0.50	004	10.61	0.50	005	13.90	1.72	003	9.45	0.31	
213	17.50	6.00	004	10.61	1.13	004	10.61	0.50	004	10.61	0.50	005	13.90	1.72	004	9.80	0.31	
215	19.00	6.00	004	10.61	1.13	004	10.61	0.50	004	10.61	0.50	005	13.90	1.72	004	9.80	0.31	
254	21.37	7.12	004	10.61	1.13	004	10.61	0.50	004	10.61	0.50	005	13.90	1.72	004	9.93	0.31	
256	23.12	7.12	004	10.61	1.13	004	10.61	0.50	004	10.61	0.50	005	13.90	1.72	004	9.93	0.31	
284	24.62	7.75	-	-	-	-	-	-	005	11.22	2.00	005	13.90	1.72	005	11.16	1.81	
286	26.12	7.75	-	-	-	-	-	-	005	11.22	2.00	005	13.90	1.72	005	11.16	1.81	
324	27.75	8.62	-	-	-	-	-	-	005	12.22	2.00	-	-	-	005	12.29	1.81	
326	29.25	8.62	-	-	-	-	-	-	005	12.22	2.00	-	-	-	-	-	-	
364	30.87	9.12	-	-	-	-	-	-	007	13.13	2.00	-	-	-	-	-	-	
365	31.87	9.12	-	-	-	-	-	-	007	13.13	2.00	-	-	-	-	-	-	

CAUTION: Baseplate setting (before piping), grouting procedures and final alignment must be in accordance with Xylem Goulds Water Technology Pump recommended procedures outlined in the instruction manual associated with this pump type.

NOTE: For 3x2x11 and 3x2.5x11 HT = 3.5 inches when using spacer coupling.

NOTE: For 3x2.5x9, 3x2.5x13 and 4x3x6.5 HT = 5.00 inches when using spacer coupling

DIMENSIONS DETERMINED BY PUMP ① ② ③

Pump Size	Suction	Disch.	CP	P	X	Y
3x2x11	3	2	15.63	6.50	8.81	2.60
3x2.5x11	3	2.5	16.24	6.56	8.81	3.21
3x2.5x9	3	2.5	22.94	5.78	8.81	3.21
3x2.5x13	3	2.5	23.24	7.53	11.02	3.51
4x3x6.5	4	3	23.27	5.50	7.87	3.42

① All Dimensions are in inches.

② Suction and discharge connections are 125 psi ANSI B16.1 Standard flanges.

③ All suction flanges have tapped holes.

④ Motor dimensions are approximate for a given NEMA frame. Consult factory if space is limited. Dimensions apply to T, TS, U and US NEMA frames.

BASE DIMENSIONS ①

Base No.	HA	HB	HE	HF	HG	HH
003	12.00	45.00	4.50	42.50	3.170	0.75
004	15.00	52.00	6.00	49.50	3.520	0.75
005	18.00	58.00	7.50	55.50	4.000	1.00
007	22.00	68.00	9.50	65.50	4.000	1.00

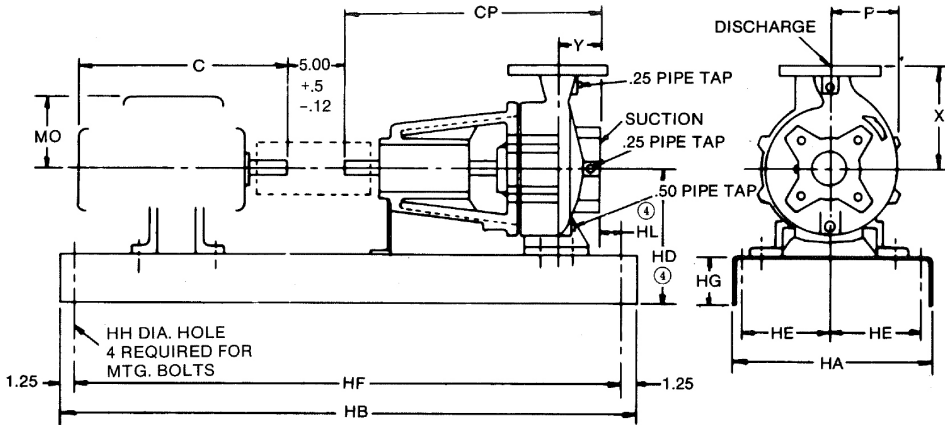
NOT FOR CONSTRUCTION, INSTALLATION OR APPLICATION PURPOSES UNLESS CERTIFIED

Certified For:									
CO #		ID #				SO #			
PUMP DATA	Size & Type	Model	Curve No.	GPM	Head	Packing	M/S	Rotation	Flanges
								CW	125 PSI
MOTOR DATA	HP	RPM	Phase	Hertz		Volts	Frame Size	Enclosure	
			3	50	60				
Sign:							Date: ____/____/____		

Single Stage End Suction Frame Mounted Pumps (Spacer Coupling) - Closed Impellers Grease Lubricated Channel Based - Model 150

Supersedes all previous issues.

DIMENSIONS – 4 x 3 x 9 through 6 x 4 x 9



Optional Drip Rim Baseplate

.75" pipe tap for drain

When optional drip rim baseplate is required, add to the following dimensions: HA + 2.56, HB + 3.57, HD + .188, HG + .188

DIMENSIONS DETERMINED BY MOTOR ①

Motor Frame ④	Pump Size		4x3x9			4x3x11			4x3x13			4x4x11			6x4x9		
	C (Approx.)	MO	Base No.	HD ④	HL ④	Base No.	HD ④	HL ④	Base No.	HD ④	HL ④	Base No.	HD ④	HL ④	Base No.	HD ④	HL ④
182	14.12	5.31	004	10.61	0.41	004	11.46	2.37	005	13.84	2.00	005	13.94	1.91	004	11.40	1.50
184	15.12	5.31	004	10.61	0.41	004	11.46	2.37	005	13.84	2.00	005	13.94	1.91	004	11.40	1.50
213	17.50	6.00	004	10.61	0.41	004	11.46	2.37	005	13.84	2.00	005	13.94	1.91	004	11.40	1.50
215	19.00	6.00	004	10.61	0.41	004	11.46	2.37	005	13.84	2.00	005	13.94	1.91	004	11.40	1.50
254	21.37	7.12	004	10.61	0.41	005	11.94	2.37	005	13.84	2.00	005	13.94	1.91	005	11.88	1.50
256	23.12	7.12	004	10.61	0.41	005	11.94	2.37	005	13.84	2.00	005	13.94	1.91	005	11.88	1.50
284	24.63	7.75	005	11.22	1.91	-	-	-	005	13.84	2.00	005	13.94	1.91	-	-	-
286	26.12	7.75	005	11.22	1.91	-	-	-	005	13.84	2.00	005	13.94	1.91	-	-	-
324	27.75	8.62	005	12.22	1.91	-	-	-	006	13.84	2.00	006	13.94	1.91	-	-	-
326	29.25	8.62	005	12.22	1.91	-	-	-	006	13.84	2.00	006	13.94	1.91	-	-	-
364	30.87	9.25	007	13.13	1.91	-	-	-	-	-	-	-	-	-	-	-	-
365	31.87	9.25	007	13.13	1.91	-	-	-	-	-	-	-	-	-	-	-	-
404	36.38	10.37	007	14.13	1.91	-	-	-	-	-	-	-	-	-	-	-	-
405	37.88	10.37	007	14.13	1.91	-	-	-	-	-	-	-	-	-	-	-	-

CAUTION: Baseplate setting (before piping), grouting procedures and final alignment must be in accordance with Xylem Goolds Water Technology Pump recommended procedures outlined in the instruction manual associated with this pump type.

DIMENSIONS DETERMINED BY PUMP ① ② ③

Pump Size	Suction	Disch.	CP	P	X	Y
4x3x9	4	3	23.04	6.08	9.84	3.31
4x3x11	4	3	22.57	6.75	9.84	2.84
4x3x13	4	3	22.94	8.00	12.40	3.21
4x4x11	4	4	23.04	7.25	11.02	3.31
6x4x9	6	4	23.50	6.75	11.02	3.72

- ① All Dimensions are in inches.
- ② Suction and discharge connections are at 125psi ANSI B16.1 Standard flanges.
- ③ All suction flanges have tapped holes.
- ④ Motor dimensions are approximate for a given NEMA frame. Consult factory if space is limited. Dimensions apply to T, TS, U and US NEMA frames.

BASE DIMENSIONS ①

Base No.	HA	HB	HE	HF	HG	HH
004	15.00	52.00	6.00	49.50	3.520	0.75
005	18.00	58.00	7.50	55.50	4.000	1.00
006	18.00	66.00	7.50	63.50	4.000	1.00
007	22.00	68.00	9.50	65.50	4.000	1.00

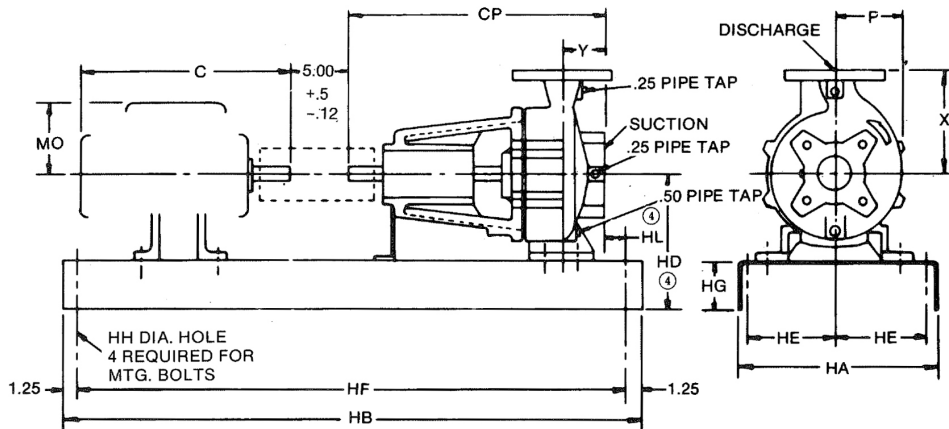
NOT FOR CONSTRUCTION, INSTALLATION OR APPLICATION PURPOSES UNLESS CERTIFIED

Certified For:									
CO #		ID #				SO #			
PUMP DATA	Size & Type	Model	Curve No.	GPM	Head	Packing	M/S	Rotation	Flanges
								CW	125 PSI
MOTOR DATA	HP	RPM	Phase	Hertz	Volts	Frame Size	Enclosure		
			3	50 60					
Sign:					Date: ____/____/____				

Single Stage End Suction Frame Mounted Pumps (Spacer Coupling) - Closed Impellers Grease Lubricated Channel Based - Model 150

Supersedes all previous issues.

DIMENSIONS – 6 x 4 x 13 through 6 x 6 x 13L



Optional Drip Rim Baseplate

.75" pipe tap for drain

When optional drip rim baseplate is required, add to the following dimensions: HA + 2.56, HB + 3.57, HD + .188, HG + .188

DIMENSIONS DETERMINED BY MOTOR ①

Motor Frame ④	Pump Size		6x4x13			6x6x9.5			6x6x11			6x6x13S			6x6x13L		
	C (Approx.)	MO	Base No.	HD ④	HL ④	Base No.	HD ④	HL ④	Base No.	HD ④	HL ④	Base No.	HD ④	HL ④	Base No.	HD ④	HL ④
182	14.12	5.31	005	13.84	1.72	005	13.94	1.41	005	13.94	1.50	-	-	-	-	-	-
184	15.12	5.31	005	13.84	1.72	005	13.94	1.41	005	13.94	1.50	-	-	-	-	-	-
213	17.50	6.00	005	13.84	1.72	005	13.94	1.41	005	13.94	1.50	007	15.00	1.41	007	15.00	1.41
216	19.00	6.00	005	13.84	1.72	005	13.94	1.41	005	13.94	1.50	007	15.00	1.41	007	15.00	1.41
254	21.37	7.12	005	13.84	1.72	005	13.94	1.41	005	13.94	1.50	007	15.00	1.41	007	15.00	1.41
256	23.12	7.12	005	13.84	1.72	005	13.94	1.41	005	13.94	1.50	007	15.00	1.41	007	15.00	1.41
284	24.62	7.75	005	13.84	1.72	005	13.94	1.41	005	13.94	1.50	007	15.00	1.41	007	15.00	1.41
286	26.12	7.75	005	13.84	1.72	005	13.94	1.41	005	13.94	1.50	007	15.00	1.41	007	15.00	1.41
324	27.75	8.62	006	13.84	1.72	-	-	-	006	13.94	1.50	007	15.00	1.41	007	15.00	1.41
326	29.25	8.62	006	13.84	1.72	-	-	-	006	13.94	1.50	007	15.00	1.41	007	15.00	1.41
364	30.87	9.12	-	-	-	-	-	-	-	-	-	007	15.00	1.41	007	15.00	1.41
365	31.87	9.12	-	-	-	-	-	-	-	-	-	007	15.00	1.41	007	15.00	1.41

CAUTION: Baseplate setting (before piping), grouting procedures and final alignment must be in accordance with Xylem Goolds Water Technology Pump recommended procedures outlined in the instruction manual associated with this pump type.

DIMENSIONS DETERMINED BY PUMP ② ③

Pump Size	Suction	Disch.	CP	P	X	Y
6x4x13	6	4	23.24	8.25	12.40	3.51
6x6x9.5	6	6	23.53	7.02	11.02	3.80
6x6x11	6	6	23.44	6.75	11.02	3.71
6x6x13S	6	6	23.53	8.88	13.97	3.80
6x6x13L	6	6	23.53	8.88	13.97	3.80

- ① All Dimensions are in inches.
- ② Suction and discharge connections are at 125psi ANSI B16.1 Standard flanges.
- ③ Suction and discharge flange for Key 76 have tapped holes.
- ④ Motor dimensions are approximate for a given NEMA frame. Consult factory if space is limited. Dimensions apply to T, TS, U and US NEMA frames.

BASE DIMENSIONS ①

Base No.	HA	HB	HE	HF	HG	HH
005	18.00	58.00	7.50	55.50	4.00	1.00
006	18.00	66.00	7.50	63.50	4.00	1.00
007	22.00	68.00	9.50	65.50	4.00	1.00

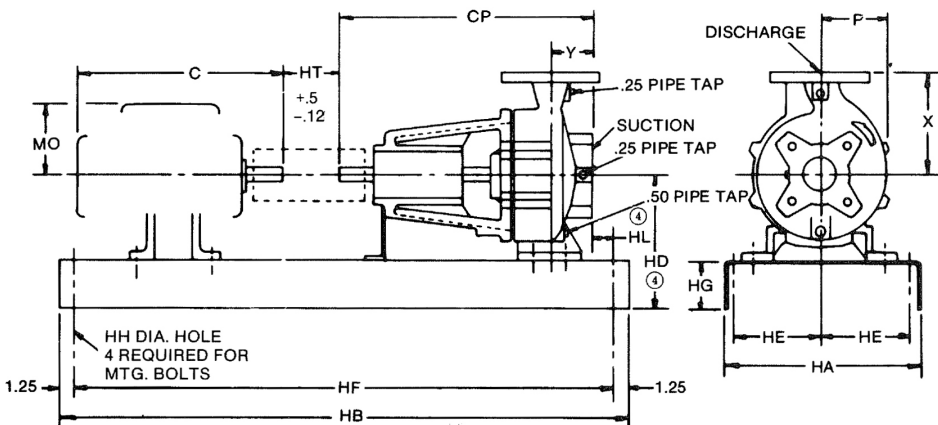
NOT FOR CONSTRUCTION, INSTALLATION OR APPLICATION PURPOSES UNLESS CERTIFIED

Certified For:									
CO #		ID #				SO #			
PUMP DATA	Size & Type	Model	Curve No.	GPM	Head	Packing	M/S	Rotation	Flanges
								CW	125 PSI
MOTOR DATA	HP	RPM	Phase	Hertz	Volts	Frame Size	Enclosure		
			3	50 60					
Sign:					Date: _____ / _____ / _____				

Single Stage End Suction Frame Mounted Pumps (Spacer Coupling) - Closed Impellers Grease Lubricated Channel Based - Model 150

Supersedes all previous issues.

DIMENSIONS – 8 x 6 x 9½ through 10 x 8 x 13



Optional Drip Rim Baseplate

.75" pipe tap for drain

When optional drip rim baseplate is required, add to the following dimensions: HA + 2.56, HB + 3.57, HD + .188, HG + .188

DIMENSIONS DETERMINED BY MOTOR ①

Motor Frame ④	Pump Size		8x6x9.5			8x6x11			8x6x13			10x8x13		
	C (Approx.)	MO	Base No.	HD ④	HL ④	Base No.	HD ④	HL ④	Base No.	HD ④	HL ④	Base No.	HD ④	HL ④
213	17.50	6.00	005	13.84	0.84	005	13.84	1.72	-	-	-	-	-	-
215	19.00	6.00	005	13.84	0.84	005	13.84	1.72	-	-	-	-	-	-
254	21.37	7.12	005	13.84	0.84	005	13.84	1.72	007	16.41	0.97	-	-	-
256	23.12	7.12	005	13.84	0.84	005	13.84	1.72	007	16.41	0.97	-	-	-
284	24.62	7.75	005	13.84	0.84	005	13.84	1.72	007	16.41	0.97	007	18.38	0.44
286	26.12	7.75	005	13.84	0.84	005	13.84	1.72	007	16.41	0.97	007	18.38	0.44
324	27.75	8.62	006	13.84	0.84	006	13.84	1.72	007	16.41	0.97	007	18.38	0.44
326	29.25	8.62	006	13.84	0.84	006	13.84	1.72	007	16.41	0.97	007	18.38	0.44
364	30.87	9.12	-	-	-	-	-	-	008	16.41	0.97	008	18.38	0.44
365	31.87	9.12	-	-	-	-	-	-	008	16.41	0.97	008	18.38	0.44
404	36.37	10.37	-	-	-	-	-	-	008	16.41	0.97	008	18.38	0.44
405	37.97	10.37	-	-	-	-	-	-	008	16.41	0.97	008	18.38	0.44
444	42.25	11.75	-	-	-	-	-	-	009	16.41	0.97	009	18.38	0.44
445	44.25	11.75	-	-	-	-	-	-	009	16.41	0.97	009	18.38	0.44

CAUTION: Baseplate setting (before piping), grouting procedures and final alignment must be in accordance with Xylem Goulds Water Technology Pump recommended procedures outlined in the instruction manual associated with this pump type.

NOTE: for 8x6x9.5 and 8x6x11. HT=5.00 Inches when using spacer coupling.

NOTE: for 8x6x13 and 10x8x13. HT=7.75 Inches when using spacer coupling

DIMENSIONS DETERMINED BY PUMP ① ② ③

Pump Size	Suction	Disch.	CP	P	X	Y
8x6x9.5	8	6	24.12	7.25	12.40	4.37
8x6x11	8	6	23.24	8.36	13.97	3.51
8x6x13	8	6	30.70	11.38	15.74	4.26
10x8x13	10	8	31.21	13.84	17.32	4.77

- ① All Dimensions are in inches.
- ② Suction and discharge connections are at 125psi ANSI B16.1 Standard flanges.
- ③ Suction flanges (and discharge flanges for 8x6x9.5) have tapped holes.
- ④ Motor dimensions are approximate for a given NEMA frame. Consult factory if space is limited. Dimensions apply to T, TS, U and US NEMA frames.

BASE DIMENSIONS ①

Base No.	HA	HB	HE	HF	HG	HH
005	18.00	58.00	7.50	55.50	4.00	1.00
006	18.00	66.00	7.50	63.50	4.00	1.00
007	22.00	68.00	9.50	65.50	4.00	1.00
008	22.00	80.00	9.50	77.50	4.00	1.00
009	25.00	96.00	11.00	93.50	4.00	1.00

NOT FOR CONSTRUCTION, INSTALLATION OR APPLICATION PURPOSES UNLESS CERTIFIED

Certified For:									
CO #		ID #				SO #			
PUMP DATA	Size & Type	Model	Curve No.	GPM	Head	Packing	M/S	Rotation	Flanges
								CW	125 PSI
MOTOR DATA	HP	RPM	Phase	Hertz	Volts	Frame Size	Enclosure		
			3	50 60					
Sign:					Date: ____/____/____				

Notes

Notes

Notes

Xylem |'zīləm|

- 1) The tissue in plants that brings water upward from the roots;
- 2) a leading global water technology company.

We're 12,500 people unified in a common purpose: creating innovative solutions to meet our world's water needs. Developing new technologies that will improve the way water is used, conserved, and re-used in the future is central to our work. We move, treat, analyze, and return water to the environment, and we help people use water efficiently, in their homes, buildings, factories and farms. In more than 150 countries, we have strong, long-standing relationships with customers who know us for our powerful combination of leading product brands and applications expertise, backed by a legacy of innovation.

For more information on how Xylem can help you, go to www.xylem.com



Xylem Inc.
2881 East Bayard Street Ext., Suite A
Seneca Falls, NY 13148
Phone: (800) 453-6777
Fax: (888) 322-5877
www.gouldswatertechnology.com