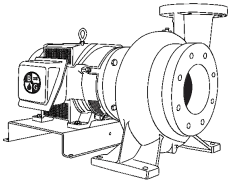


JOB: UNIT TAG: ENGINEER: CONTRACTOR:	REPRESENTATIVE: ORDER NO.: SUBMITTED BY: APPROVED BY:	DATE: DATE: DATE:
---	--	--



5-13B

Marlow Series e-531SC

Close-Coupled Centrifugal Pumps

SPECIFICATIONS

FLOW _____ HEAD _____
 HP _____ RPM _____
 VOLTS _____
 CYCLE _____ PHASE _____
 ENCLOSURE _____
 APPROX. WEIGHT _____
 SPECIALS _____

MATERIALS OF CONSTRUCTION

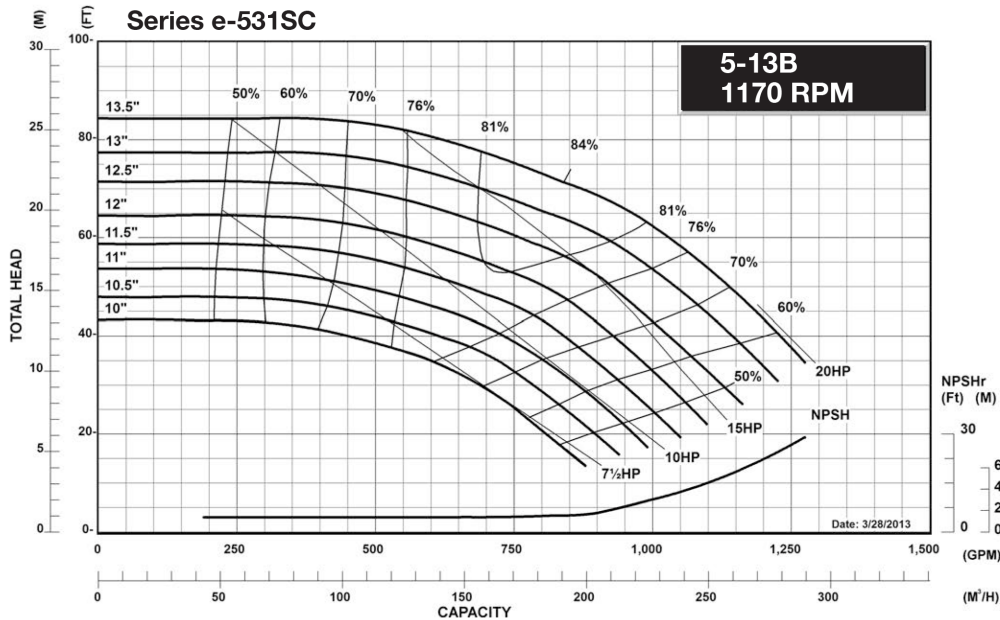
Stainless Steel Fitted

MAXIMUM WORKING PRESSURE

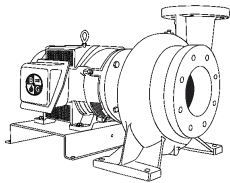
175 psi (12 bar) W.P.
with 125# ANSI flange drilling

TYPE OF SEAL

- Standard Seal (Buna-Carbon/Ceramic)
- F Standard Seal w/ Flush Line (Buna-Carbon/Ceramic)
- S Stuffing Box Construction w/ Flushed Mechanical Single Seal (EPR-Tungsten Carbide/Carbon)
- PF Stuffing Box Construction w/ Flushed Packing (Graphite Impregnated Teflon)



JOB: UNIT TAG: ENGINEER: CONTRACTOR:	REPRESENTATIVE: ORDER NO.: SUBMITTED BY: APPROVED BY:	DATE: DATE: DATE:
---	--	--



5-13B

Marlow Series e-531SC

Close-Coupled Centrifugal Pumps

SPECIFICATIONS

FLOW _____ HEAD _____
 HP _____ RPM _____
 VOLTS _____
 CYCLE _____ PHASE _____
 ENCLOSURE _____
 APPROX. WEIGHT _____
 SPECIALS _____

MATERIALS OF CONSTRUCTION

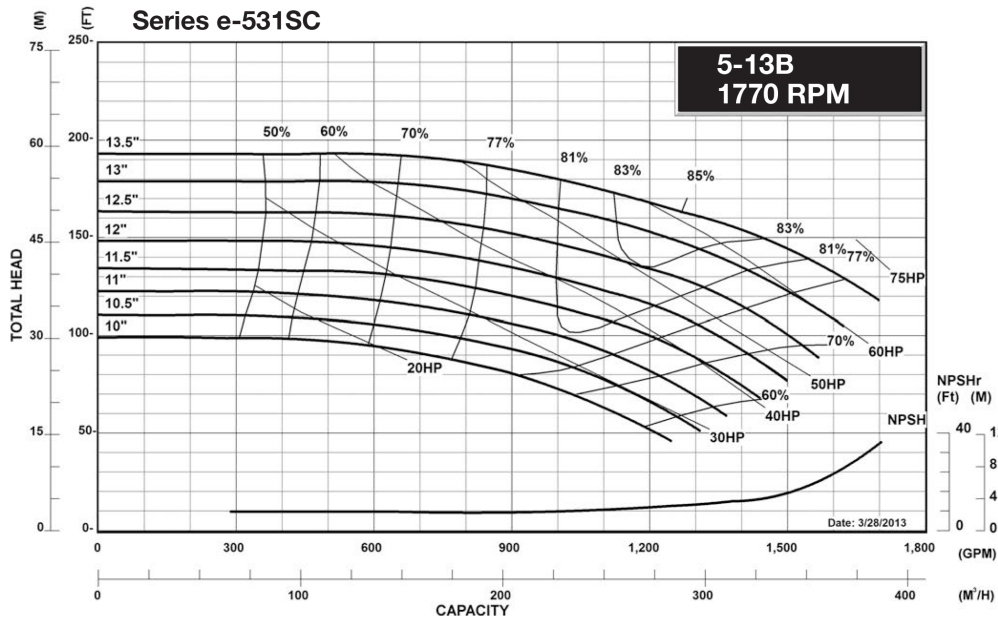
Stainless Steel Fitted

MAXIMUM WORKING PRESSURE

175 psi (12 bar) W.P.
with 125# ANSI flange drilling

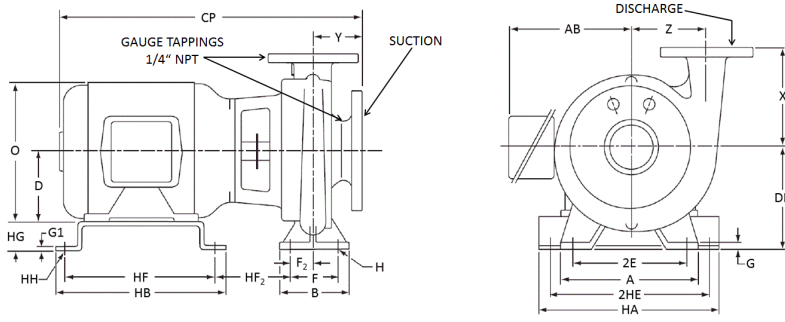
TYPE OF SEAL

- Standard Seal (Buna-Carbon/Ceramic)
- F Standard Seal w/ Flush Line (Buna-Carbon/Ceramic)
- S Stuffing Box Construction w/ Flushed Mechanical Single Seal (EPR-Tungsten Carbide/Carbon)
- PF Stuffing Box Construction w/ Flushed Packing (Graphite Impregnated Teflon)



Marlow Series e-531SC 5-13B Centrifugal Pump Submittal

M-502.46



PUMP DIMENSIONS - INCHES (MM)						
X		Y		Z		
13.00 (330)		6.00 (152)		9.00 (229)		

FLANGE DIMENSIONS - INCHES (MM)						
125# ANSI FLAT FACE	NOMINAL PIPE SIZE	O.D.	THICKNESS	BOLT CIRCLE DIAMETER	NO. OF BOLTS	SIZE OF BOLTS
DISCHARGE	5	11.00 (279)	1.44 (37)	8.50 (216)	8	0.75 (19)
SUCTION	6	12.50 (318)	1.50 (38)	9.50 (241)	8	0.75 (19)

DIMENSIONS - INCHES (mm)

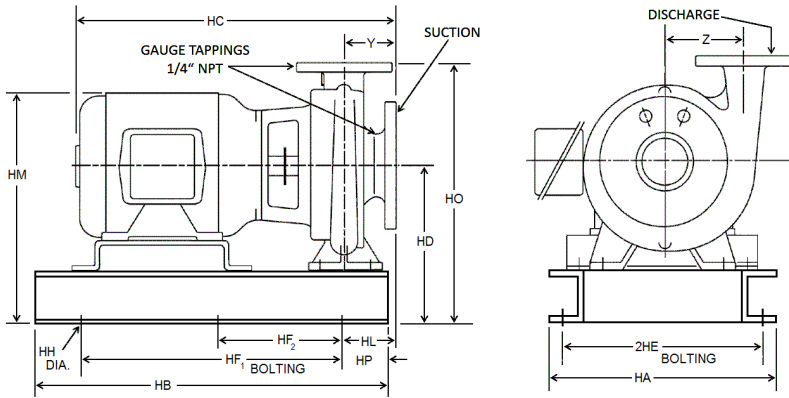
STANDARD SEAL

MOTOR FRAME	A	AB	HB	CP MAX	D	HF	G	G1	H	HH	HA	F2	2E	2HE	HF2 MAX	B	F	O	HG	DD
254JM	23.00 (584)	8.00 (203)	16.13 (410)	27.98 (711)	6.25 (159)	14.88 (378)	1.00 (25)	0.25 (6)	0.88 (22)	0.63 (16)	22.50 (572)	4.19 (106)	21.00 (533)	21.00 (533)	3.05 (77)	11.00 (279)	9.00 (229)	10.88 (276)	5.75 (146)	12.00 (305)
256JM	23.00 (584)	8.94 (227)	16.13 (410)	29.86 (758)	6.25 (159)	14.88 (378)	1.00 (25)	0.25 (6)	0.88 (22)	0.63 (16)	22.50 (572)	4.19 (106)	21.00 (533)	21.00 (533)	3.05 (77)	11.00 (279)	9.00 (229)	12.94 (329)	5.75 (146)	12.00 (305)
284JM	23.00 (584)	11.50 (292)	20.25 (514)	29.97 (761)	7.00 (178)	18.25 (464)	1.00 (25)	0.25 (6)	0.88 (22)	0.63 (16)	23.00 (584)	4.19 (106)	21.00 (533)	21.00 (533)	2.36 (60)	11.00 (279)	9.00 (229)	13.88 (352)	5.00 (127)	12.00 (305)
286JM	23.00 (584)	11.50 (292)	20.25 (514)	31.55 (801)	7.00 (178)	18.25 (464)	1.00 (25)	0.25 (6)	0.88 (22)	0.63 (16)	23.00 (584)	4.19 (106)	21.00 (533)	21.00 (533)	2.36 (60)	11.00 (279)	9.00 (229)	13.88 (352)	5.00 (127)	12.00 (305)
324JM	23.00 (584)	14.06 (357)	19.00 (483)	31.98 (812)	8.00 (203)	17.50 (445)	1.00 (25)	0.25 (6)	0.88 (22)	0.63 (16)	22.50 (572)	4.19 (106)	21.00 (533)	21.00 (533)	3.74 (95)	11.00 (279)	9.00 (229)	15.94 (405)	4.00 (102)	12.00 (305)
326JM	23.00 (584)	14.06 (357)	19.00 (483)	33.48 (850)	8.00 (203)	17.50 (445)	1.00 (25)	0.25 (6)	0.88 (22)	0.63 (16)	22.50 (572)	4.19 (106)	21.00 (533)	21.00 (533)	3.74 (167)	11.00 (279)	9.00 (229)	15.94 (405)	4.00 (102)	12.00 (305)

Dimensions are subject to change. Not to be used for construction purposes unless certified.

Marlow Series e-531SC 5-13B Centrifugal Pump Submittal

M-502.46



PUMP DIMENSIONS - INCHES (MM)	
Y	Z
6.00 (152)	9.00 (229)

FLANGE DIMENSIONS - INCHES (MM)						
125# ANSI FLAT FACE	NOMINAL PIPE SIZE	O.D.	THICKNESS	BOLT CIRCLE DIAMETER	NO. OF BOLTS	SIZE OF BOLTS
DISCHARGE	5	11.00 (279)	1.44 (37)	8.50 (216)	8	0.75 (19)
SUCTION	6	12.50 (318)	1.50 (38)	9.50 (241)	8	0.75 (19)

DIMENSIONS - INCHES (mm)

STANDARD SEAL

MOTOR FRAME	HA	HB	HC MAX	HD	2HE	HF1	HF2	HH	HL	HM MAX	HO	HP
254JM	24.00 (610)	56.00 (1422)	27.98 (711)	16.50 (419)	21.50 (546)	44.00 (1118)	22.00 (559)	1.00 (25)	5.44 (138)	23.38 (594)	29.50 (749)	6.00 (152)
256JM	24.00 (610)	56.00 (1422)	29.86 (758)	16.50 (419)	21.50 (546)	44.00 (1118)	22.00 (559)	1.00 (25)	5.44 (138)	23.38 (594)	29.50 (749)	6.00 (152)
284JM	24.00 (610)	56.00 (1422)	29.97 (761)	16.50 (419)	21.50 (546)	44.00 (1118)	22.00 (559)	1.00 (25)	5.44 (138)	24.50 (622)	29.50 (749)	6.00 (152)
286JM	24.00 (610)	56.00 (1422)	31.55 (801)	16.50 (419)	21.50 (546)	44.00 (1118)	22.00 (559)	1.00 (25)	5.44 (138)	24.50 (622)	29.50 (749)	6.00 (152)
324JM	24.00 (610)	56.00 (1422)	31.98 (812)	16.50 (419)	21.50 (546)	44.00 (1118)	22.00 (559)	1.00 (25)	5.44 (138)	25.63 (651)	29.50 (749)	6.00 (152)
326JM	24.00 (610)	56.00 (1422)	33.48 (850)	16.50 (419)	21.50 (546)	44.00 (1118)	22.00 (559)	1.00 (25)	5.44 (138)	25.63 (651)	29.50 (749)	6.00 (152)

Dimensions are subject to change. Not to be used for construction purposes unless certified.

Xylem Inc.
 8200 N. Austin Avenue
 Morton Grove, IL 60053
 Phone: (847)966-3700
 Fax: (847)965-8379
 www.gouldswatertechnology.com



Goulds is a registered trademark of Goulds Pumps, Inc. and is used under license.
 © 2016 Xylem Inc.