

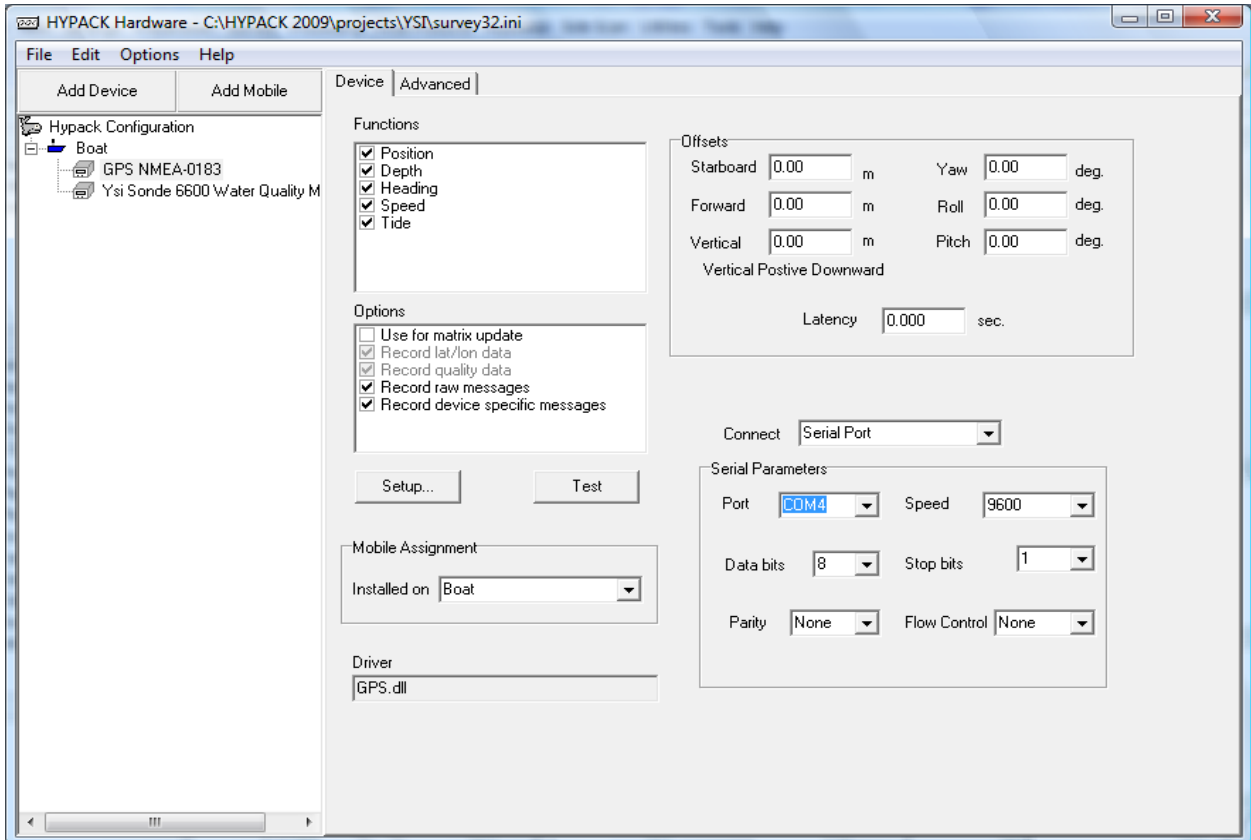


Using Control to Test Communications

By Monicque Lee

You ever had this happen? You open up SURVEY and don't see any information coming in from a specific device, or all of them! If it is a non-network connection, here is where to go when you find yourself in that position.

The first thing to do is open up HYPACK® HARDWARE and verify you have set connection settings.



If this looks correct, but there is no data coming through when you click the 'Test' button, HYPACK® has a way to determine if your device is 'talking' to your computer.

The Control WCOM32 program is a stand-alone program in HYPACK® that works independently of HYPACK®. Its purpose is to test non-network device connections-- to determine if a device is communicating, and to see whether you are using the correct connection parameters to see the data come through correctly into HYPACK®.

There are two places from which you can access WCOM32:

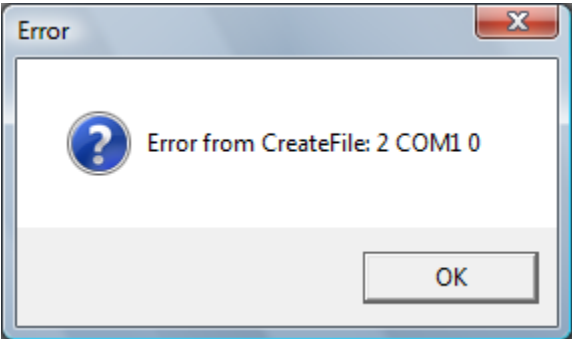
- **In the main HYPACK® Utilities menu.** Select UTILITIES-COMMUNICATIONS - CONTROL WCOM32.
- **From HYPACK® HARDWARE.** On the HYPACK® HARDWARE menu, select OPTIONS-COM-WCOM32.

Once you are in the WCOM32 program, the test process is the same:

Select PORT-OPEN PORT then choose the port to which you think your device should connected.

- **If the selected port is not active**, you will see the following error message:

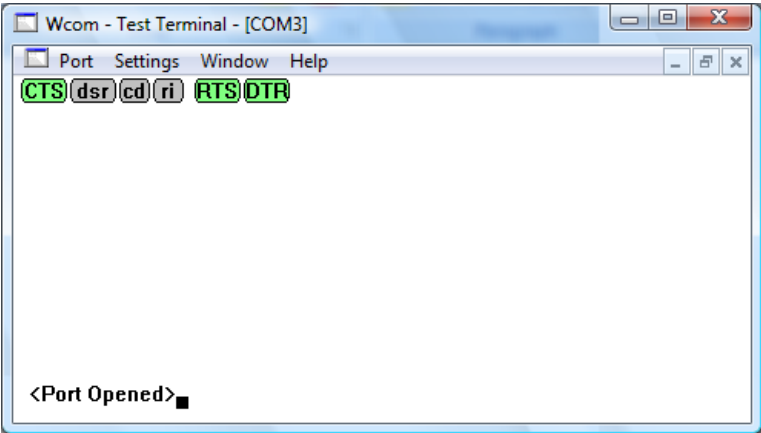
FIGURE 1. Error when the selected port is not active.



This means that is not an active COM port and will be followed by a 'Port Failed to open' message.

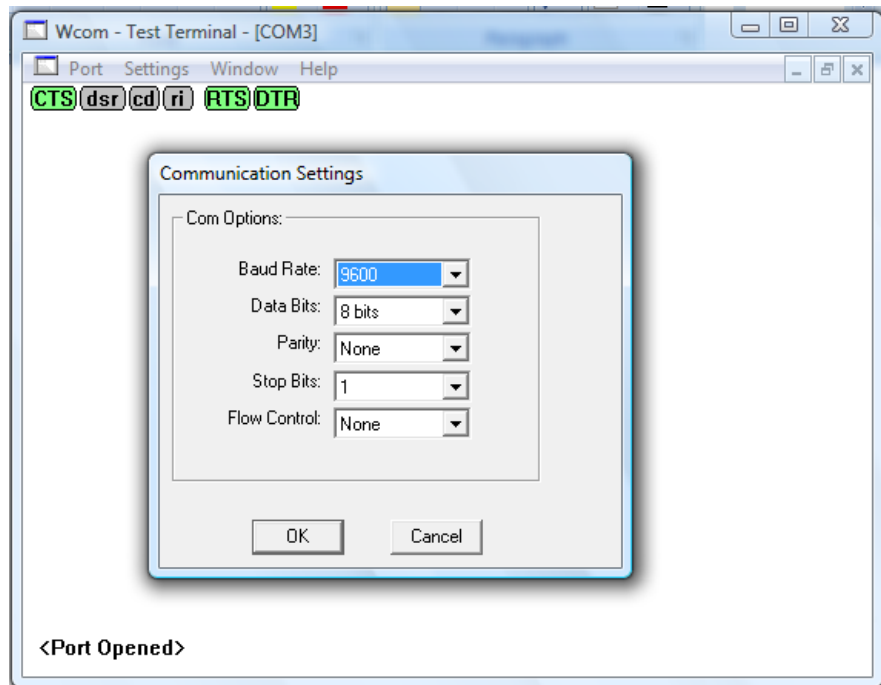
- **If the port is active, but no data is coming through**, you will see the following:

FIGURE 2. WCOM32 when the port is open, but there is no data.



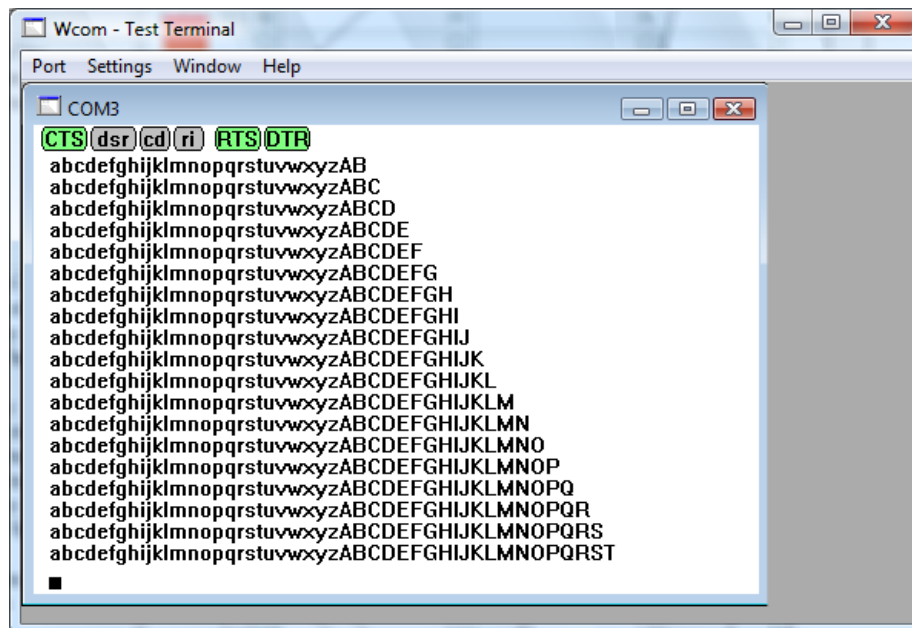
- **If you are seeing an indiscernible message coming across**, your connection settings are incorrect and you should use WCOM32 to determine the correct ones.
 - a. On the WCOM32 menu, select SETTINGS-PORT SETTINGS and a Communication Settings dialog will appear.

FIGURE 3. Editing the Communication Settings in WCom32



- b. Change the various settings to see how they will affect the message your device is sending out, until you see a viable message string.

FIGURE 4. WCom32 shows readable data strings.



**** Warning!** Once you test your connection settings in WCOM32, make sure you close out the test windows completely--*not minimized!* If you fail to do this, the WCOM32 program will keep the ports being tested busy, so HYPACK® can't open them.

- c. Once you know your device is communicating with your computer and you have a good message string coming through, close out of WCOM32 and set your HYPACK® HARDWARE accordingly.