



Creating a Planned Line “On-the-Fly” in SURVEY

By Pat Sanders

Hydrographers using the HYPACK® 2011 version will find a new feature in the Area Maps of HYPACK® SURVEY. There will be two new icons that allow you to create a new planned line by digitizing points in the Area Map window. These icons are only active when the Status is ‘Off Line’.

FIGURE 1. Icons to Create Planned Lines in SURVEY

When the status is ‘Off Line’, the pencil icon with the red hash allows you to begin digitizing waypoints for your new planned line. Just click the icon and start digitizing your waypoints. You need at least two waypoints to create a new planned line.

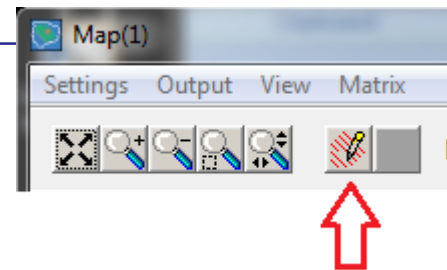
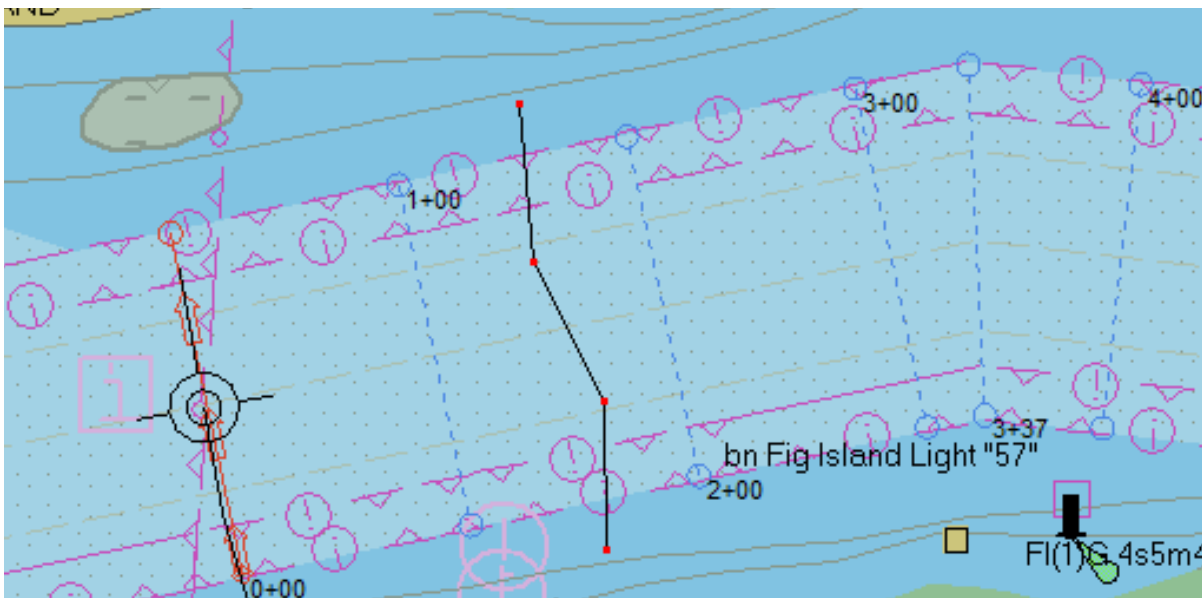


FIGURE 2. Digitizing a New Planned Line in SURVEY



In Figure 2, I have digitized four waypoints, denoted by the red dots and connected by the black line segments. Once I begin digitizing waypoints, the pencil icon with the blue hash becomes active.

When you have finished digitizing your waypoints, click on the pencil icon with the blue background.

- Your digitized planned line will become the active planned line.
- If you already have a planned line file loaded in SURVEY, the digitized line will be appended to the existing planned line file.
- If you do not have a planned line file loaded in SURVEY, one will be created and the digitized line will be added to it.

- The new planned line will be named with the time it was created. In our example (Figure 3), it is named 09_08_25 for 09:08:25.

FIGURE 3. Resulting Planned Survey Line

