



# How to Display Russian Interface in HYPACK® Correctly

By Ivan Izaak

This article is for Russian HYPACK®users, but it could also be helpful for other non-English users as well.

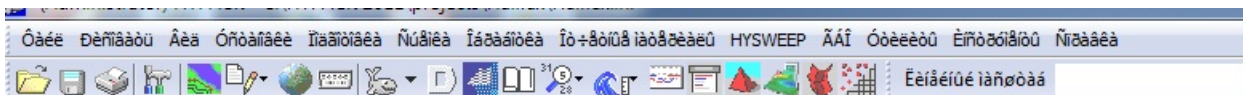
## *CORRECT DISPLAY OF THE CYRILLIC CHARACTERS IN THE MAIN HYPACK® SHELL*

HYPACK® supports several interface languages like French, Spanish, German, Russian etc.

**To switch between different languages** select SETTINGS – LANGUAGE and the desired language in the drop-down list.

From this point, you could be in trouble. If you have installed a non-Russian version of Windows®, when you select the Russian Language, all of the Russian characters (well, it is better to say Cyrillic) become unreadable and you get something like this:

*FIGURE 1. Unreadable Cyrillic Characters in the main HYPACK® Shell*



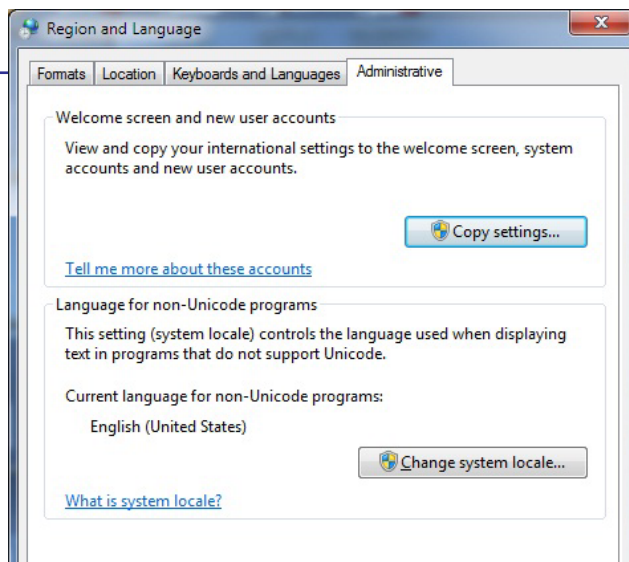
If you have a Russian version of Windows®, you can skip the information below.

To fix the problem you need to do the following:

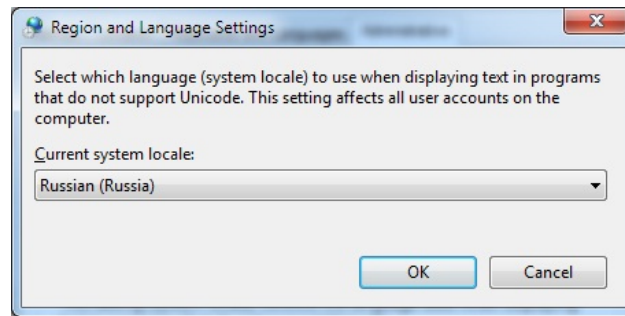
1. Go to the **Control Panel – Region and Language – Administrative** and find the “**Current Language for Non-unicode Programs**” section (in Windows® 7). If you found unreadable characters in the HYPACK® main shell, you should see here that the current language for non-unicode programs is English (or wherever you have purchased Windows®).

*FIGURE 2. Region and Language panel inside WINDOWS 7*

2. Click [**Change System Locale**] and select Russian (or whatever language you would like to be displayed in HYPACK®).

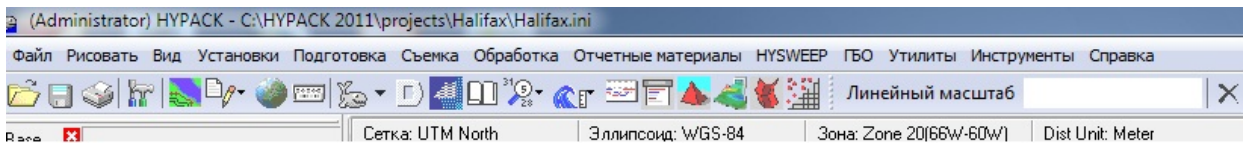


**FIGURE 3.** *Selecting Russian Language for non-Unicode programs*



3. Restart the computer. Now when you start HYPACK®, you should see all the labels are displayed correctly!

**FIGURE 4.** *Corrected labels inside HYPACK®*



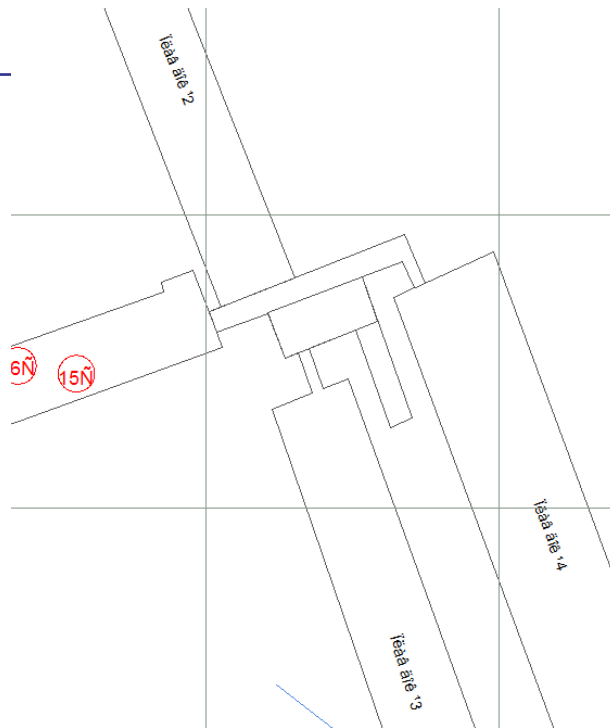
## ***CORRECT DISPLAY OF RUSSIAN LABELS IN DXF FILES***

Another problem for Russian customers is a mess with the labels, made with Cyrillic characters in DXF files.

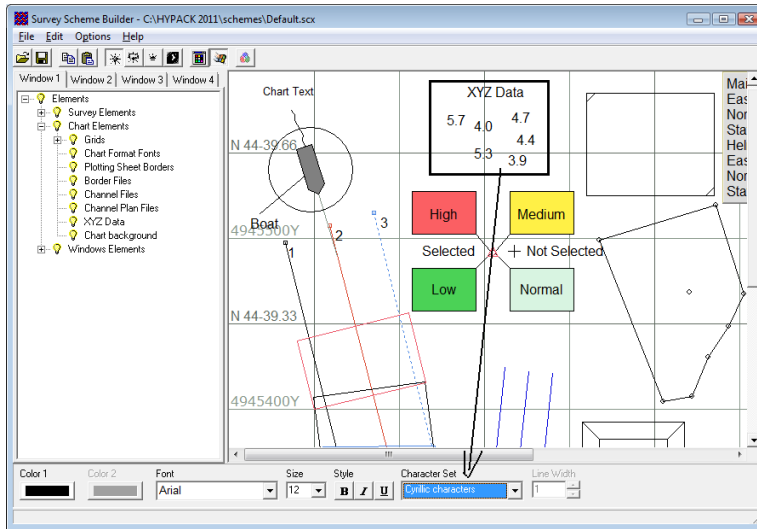
**FIGURE 5.** *Cyrillic Labels in DXF Files Displayed in HYPACK® as a Background*

I remember, a long time ago, to fix this problem one had to go to the Windows® registry and make specific changes there. It worked up till Windows® Vista and you have to be a bit of advanced user to make those changes. Now it is much easier inside HYPACK®.

1. Run the SCHEMEBUILDER program under SETTINGS menu.
2. Click at XYZ Data portion on the main screen of the program.
3. Select a Cyrillic Characters under **Character Set** as it is shown below.

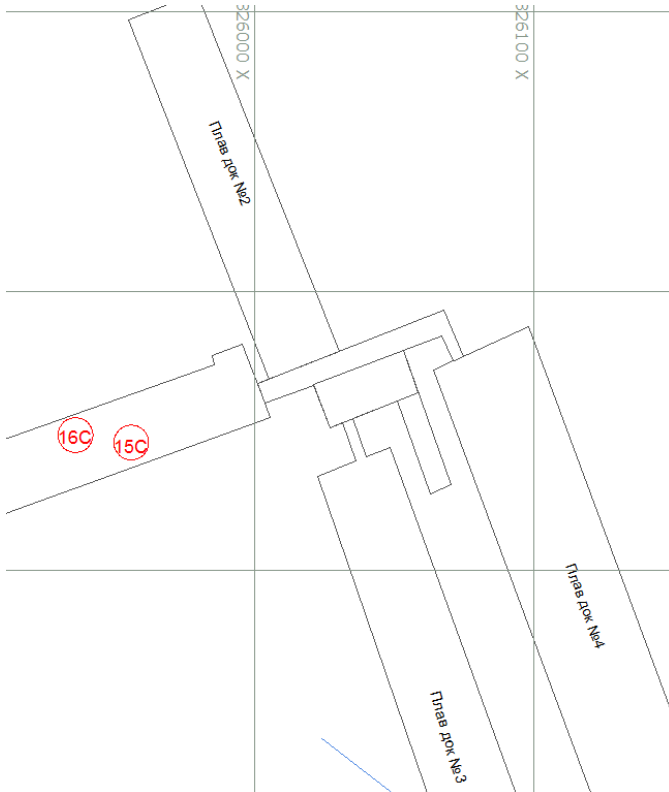


**FIGURE 6.** Setting Cyrillic Characters in the SCHEMEBUILDER Program



4. Save the Scheme file (\*.scx) and close the SCHEMEBUILDER. The background DXF file now should be displayed correctly.

**FIGURE 7.** Fixed labels in the DXF file



## ***FIXING THE DATA DISPLAY INSIDE HYPACK® SURVEY/ DREDGEPACK®***

After switching to the Russian interface in HYPACK®, you will still see the problem in the **Data Display** when you run the SURVEY program.

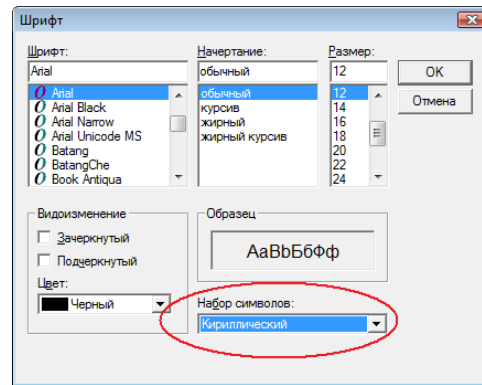
Шрифт... Сконфигурировать... Стил	
ἰἄἡἡἰἰἂἂ ὁἔἔἔ	46d30.1628' N
ἰἄἡἡἰἰἂἂ Ἀἰἔ	030d44.8443' E
ἔἔἔἡἡ	241.0
Νἔἰἔἡἡἡἡἡ(kt)	<b>0.73</b>
Νἡἡἡἡἡ	<b>ΣΑΙἘΝἸ ἈἸἘἘἔἔ×ΑΙΑ</b>
Ἐἰἂ ὁἂἔἔἔἔἔ	
Ἀἔἔἔἔἔἔἔἔ	<b>5.55</b>
Ὀἔἰἂἂἂἂἂ	0.00
Ἐἡἡἔ Ἀἔἔἔἔἔἔἔἔ	5.55
Curs East	327251.74
Curs North	5154407.63
Ἐἰἂ ὁἂἔἔ	N/A
ἰἂἔἔἂ ὁἂἔἔἔ	
Ἀἔἡἡ ὁἂἔἔἔ	
Ἀἔἂἂ ἂἰ ὁἂἔἔἔ	
Ἐἂἡἡἡἡἔἔἔ ἰἡ ἂἔἔἔ ἂἔἔἔἔἔ (ἘἰἈ)	<b>-189.41</b>
Ἐἂἡἡἡἡἔἔἔ ἰἡ ἔἡἡἡ ἂἔἔἔἔἔ	<b>1177.72</b>
ἰἡἡἡἡἂἂ ὁἡἔἔἔ	<b>1</b>

**FIGURE 8.** Data Display with Bad Labels in the SURVEY Program

There is an easy procedure to fix it:

1. Select **Font (Шрифт)** in the menu bar.
2. Select Cyrillic characters in the drop-down list as below.

**FIGURE 9.** Setting Cyrillic characters for Data Display window inside SURVEY



3. Now click [OK] to close the dialog window. You may also have to resize the Data Display window (just to update the screen).

**FIGURE 10.** Correct Information in the Data Display Window in SURVEY

Шрифт... Сконфигурировать... Стил	
Местная шир.	46d30.1628' N
Местная Дол.	030d44.8443' E
курс	241.0
Скорость(kt)	0.00
Статус	<b>ЗАПИСЬ ВЫКЛЮЧЕНА</b>
Имя файла	
Глубина	14.17
Уровень	0.00
Испр.Глубина	14.17
Curs East	327254.27
Curs North	5154427.18
Имя цели	N/A
Пеленг цели	
Дист.цели	
Время до цели	
Расстояние от начала галса (РНГ)	<b>-189.41</b>

---

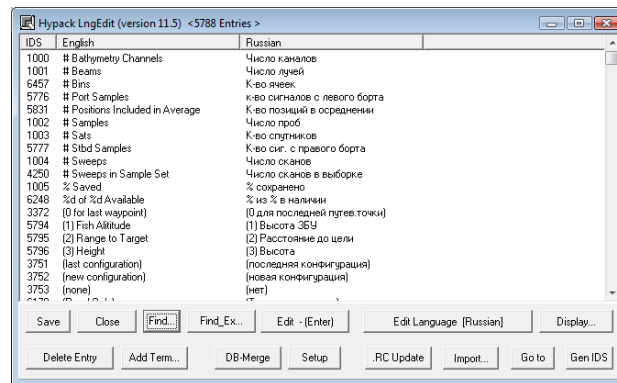
---

## ***SOME OTHER RUSSIAN STUFF***

Since we keep changing HYPACK®, not all the items in the Russian interface are translated into Russian. I keep updating the Russian interface for each release, but you can update it yourself.

1. Find the “LNGEDIT” program under the HYPACK® install folder.
2. Change [Edit Language] to Russian and click [Display] to select Russian language for display.

**FIGURE 11.** *Language Editor in HYPACK®*



You can download the HYPACK® User Manual translated to Russian from our web-site:

<http://www.hypack.com/new/Support/DocumentsManualsTechnicalArticlesetc/tabid/81/Default.aspx>.

Currently it is adapted to HYPACK® 2008 version. I plan to complete the newest translation to adapt it to HYPACK® 2011 soon.