



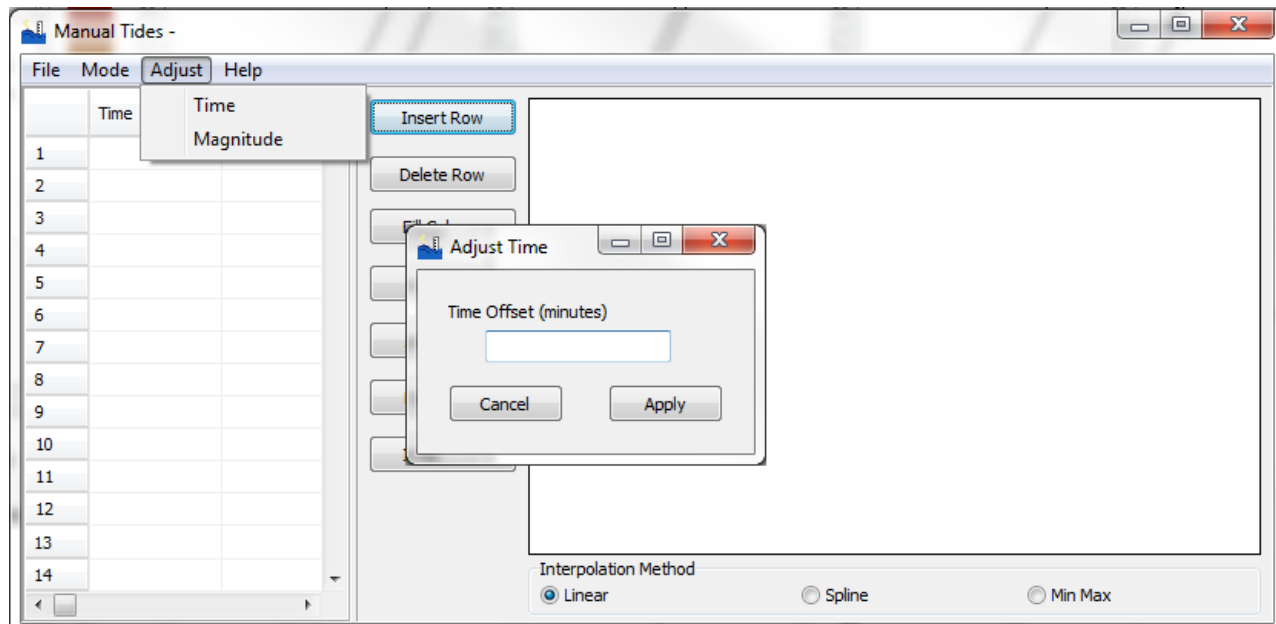
Changes in Manual Tides

By Ken Aiken

I've been working on a couple of changes to the MANUAL TIDES program.

There is now an Adjust menu in MANUAL TIDES. This allows the offset of either time (in minutes) or magnitude. These are both very useful for imported data or if you accidentally enter inverted tide data. For example, enter in -300 for time to go from UTC to EST, USA or you can enter in 12 for magnitude to go from inches to feet.

FIGURE 1. Offset Adjustments in MANUAL TIDES



My other change is the ability to extract the data straight from the NOAA website for a given tide station.

1. **Enter your project information:** start and end dates along with the tide station's number, the datum and the units (m or ft).
2. **Press [Get Page]** to load up the NOAA historic tide data page for your settings. Once it has loaded, you can view that page and verify the data.
3. **Click [Import]** and that will extract the 6 minute tide data. If verified data exists it will load that otherwise it will use the predicted tide data.

FIGURE 2. Extracting NOAA Tide Data from Their Web Page

The screenshot shows the NOAA Tide Station Import interface. At the top, there are input fields for 'START' (3/ 5/2013), 'END' (3/12/2013), 'Station' (8465705), and 'Datum' (MLW). Below these are 'Units' (Meters) and two buttons: 'Get Page' and 'Import'. Red boxes and labels 'Step 1', 'Step 2', and 'Step 3' indicate the sequence of actions. The URL bar shows a complex query string. The main content area features the NOAA logo, a search bar, and a navigation menu. The primary data section is titled 'Station ID: 8465705' and 'Historic Tide Data'. It includes a table with columns for Station, Date, Time, Pred 6, and Vrfy 6. A sidebar on the left contains various data categories like 'Station Home Page', 'Tide / Water Level Data', etc.

Step 1 highlights the input fields for Start, Station, Datum, End, and Units.

Step 2 highlights the 'Get Page' button.

Step 3 highlights the 'Import' button.

URL: http://tidesandcurrents.noaa.gov/data_menu.shtml?bdate=20130305&edate=20130312&wvl_sensor_hist=W1&relative=&datum=5&unit=0&shift=6705&type=Historic+Tide+Data&form

Station ID: 8465705

Historic Tide Data

Station	Date	Time	Pred 6	Vrfy 6
DCP#:			1	1
Units:			Meters	Meters
Data%:	MLW	Local	99.476	78.010
Maximum:			2.069	2.641
Minimum:			-0.291	-0.074

8465705	20130305	00:00	0.296	0.299
8465705	20130305	00:06	0.335	0.330
8465705	20130305	00:12	0.375	0.367
8465705	20130305	00:18	0.417	0.416