

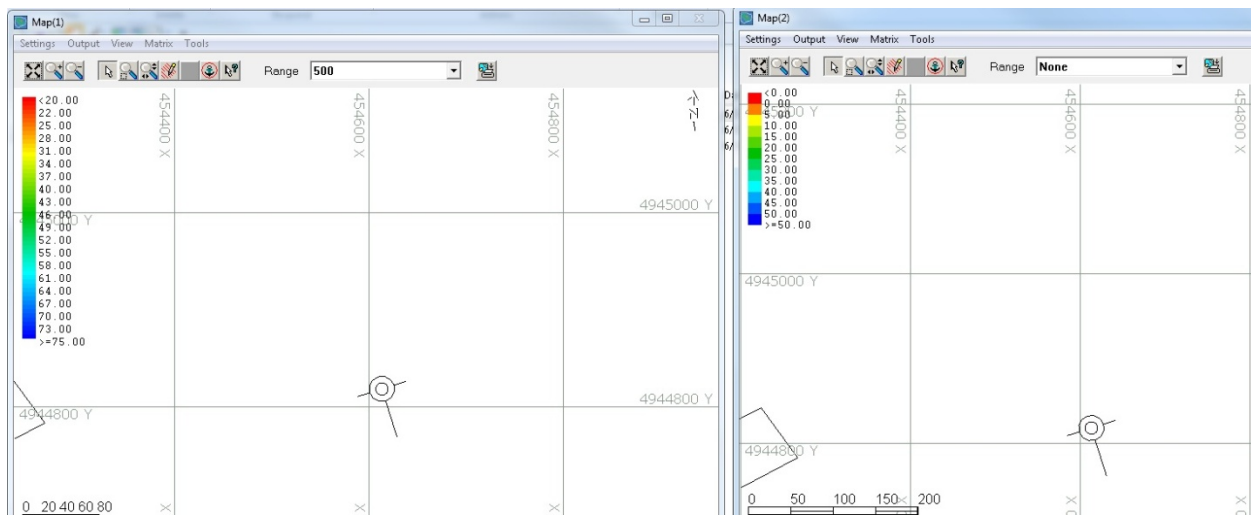


Displaying the Same Color Bar in all of Your Map Windows.

By Roy Goyette

When using multiple map windows in HYPACK® SURVEY or DREDGEPACK®, you may have noticed that the color bar may be different in each window. This happens from time to time when the ini files that control the color bar gets out of sync with the main color file. But you don't have to keep it that way, and it's not necessary to manually choose your colors and ranges again. If you want to show the same color bar in multiple map windows or all the map windows follow these easy steps to duplicate the color bar in each window.

FIGURE 1. Map Windows with Different Color Bars

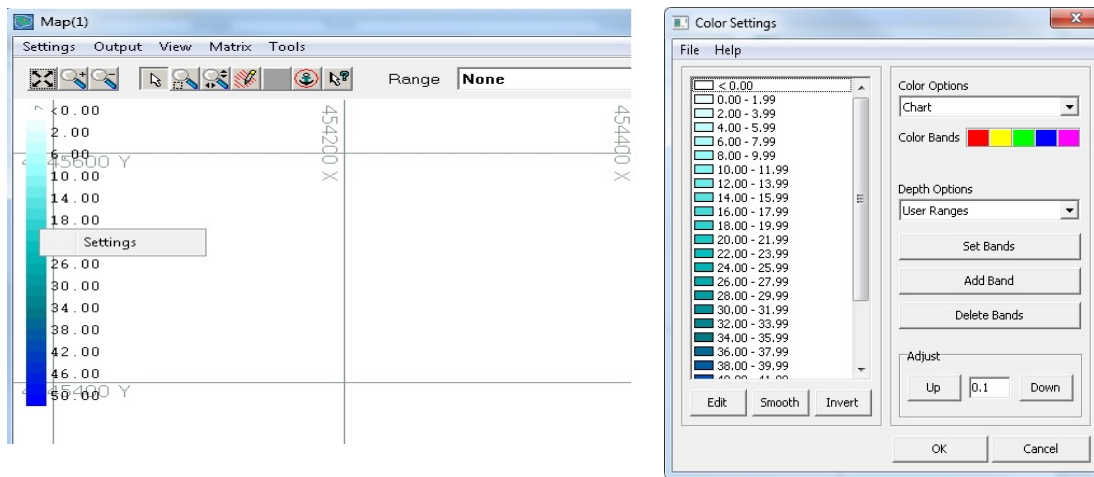


When you select WINDOW-NEW- MAP, the program creates a new Map window with independent features including the color bar. You could right-click on the color bar to access the Colors dialog and recreate the same colors as in Map 1 but, if you have multiple windows, this could become a little cumbersome and may take you significant time depending on the number of windows you are configuring.

Here's the quickest way to resolve this situation:

1. **Right-click on the color bar then select the Settings option.** This will open the Colors dialog.

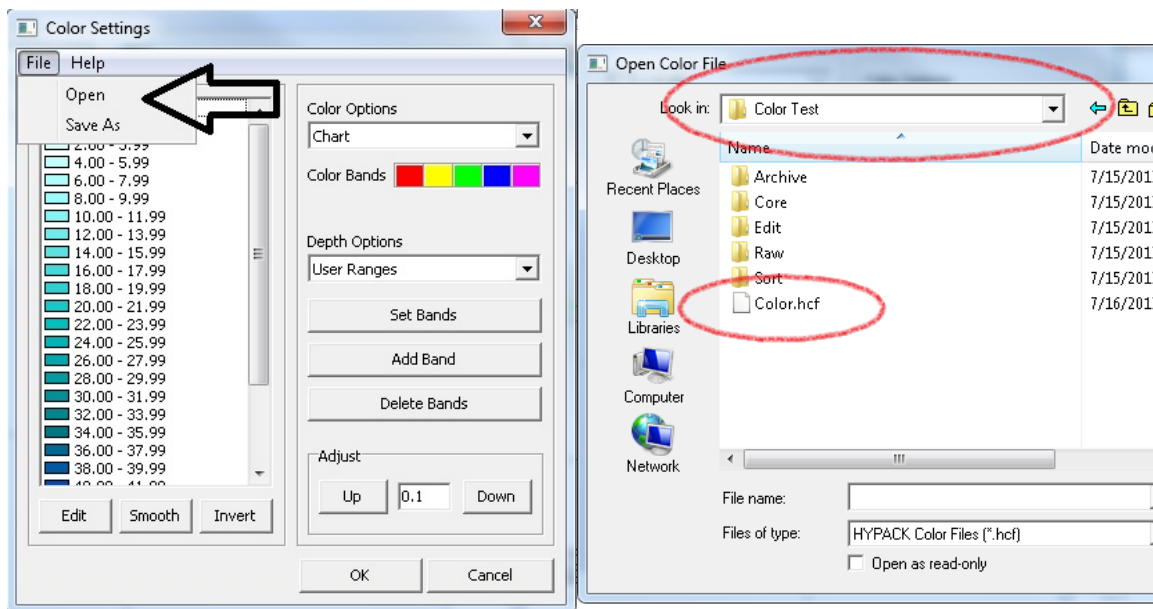
FIGURE 2. Opening the Colors Dialog



2. **Just reopen the color file associated with your project** (instead of recreating the color bar by selecting bands etc).
 - a. **Select FILE-OPEN.**
 - b. **Be sure you're in the current project.**
 - c. **Double-click the Color.HCF file.**

This will open the current color file for the project and set your second map window to the same colors.

FIGURE 3. Loading your Color.HCF File



And the projects default color bar will be displayed in the second window.

FIGURE 4. Map Windows with the Same Sounding Colors

