



Downloading Intermagnet Data

By Joseph Adamski

One of the file format options you have in the MAGEDIT (Magnetometer Editing) program for shore corrections is known as IAGA which is used by many observatories that are members of INTERMAGNET.

1. **Choose your Observatory.** When choosing the observatory from which to take data, you should try to pick one as close to your project site as possible. A list of the INTERMAGNET observatories is found at <http://www.intermagnet.org/imos/imotblobs-eng.php> along with their co-latitude and longitude.

FIGURE 1. *The Information for the Chambon la Foret Observatory.*

Chambon la Foret (CLF)

Station (ID)	CLF
Location	Chambon la Foret
Country	France
Institutes	Institut de Physique du Globe de Paris (France)
Co-latitude	41.98°
Longitude	2.27°
Elevation	145 meters
Orientation	HDZF
Instruments	Absolutes: DI-flux Zeiss 010A Bartington MAG01H Overhauser effect proton scalar magnetometer (regionMAG SM90R) Variations: Homocentric fluxgate vector magnetometer (IPGP VM391) Nuclear Magnetic Resonance scalar magnetometer (IXSEA SM100) Backup: Nuclear Magnetic Resonance scalar magnetometer (IXSEA SM100) Three-component fluxgate vector magnetometer (Thomson Sintra ASM)
GIN	Par (Paris)
Communication	E-mail

-
-
2. **Download the data.** The page for data downloading can be found at <http://www.intermagnet.org/data-donnee/download-eng.php>. You should download files for multiple days before and after your survey for the best results.

It is easiest to set the Data Type you are searching for to best available of all types and then set your start and ending dates to multiple days before and after the survey. After searching, find the station and select the days for which you would like to download files.

FIGURE 2. CLF Station Download Options

- CLF, Chambon la Foret	8 available files, 0 not available	Select all files for CLF <input type="checkbox"/>
2013-10-25	clf20131025vmin.min, available	Add file <input type="checkbox"/>
2013-10-26	clf20131026vmin.min, available	Add file <input checked="" type="checkbox"/>
2013-10-27	clf20131027vmin.min, available	Add file <input checked="" type="checkbox"/>
2013-10-28	clf20131028vmin.min, available	Add file <input checked="" type="checkbox"/>
2013-10-29	clf20131029vmin.min, available	Add file <input checked="" type="checkbox"/>
2013-10-30	clf20131030vmin.min, available	Add file <input checked="" type="checkbox"/>

3. **Load the shore files into the MAGEDIT program.**

Important: Note that the station information uses co-latitude rather than latitude. For example with the Chambon La Foret station, when inputting into the MAGEDIT shore window you should use 48.02 as the latitude as INTERMAGNET reports the co-latitude as 41.98 ($90-41.98=48.02$).

FIGURE 3. Select Multiple Days of IAGA Files for the Best Results

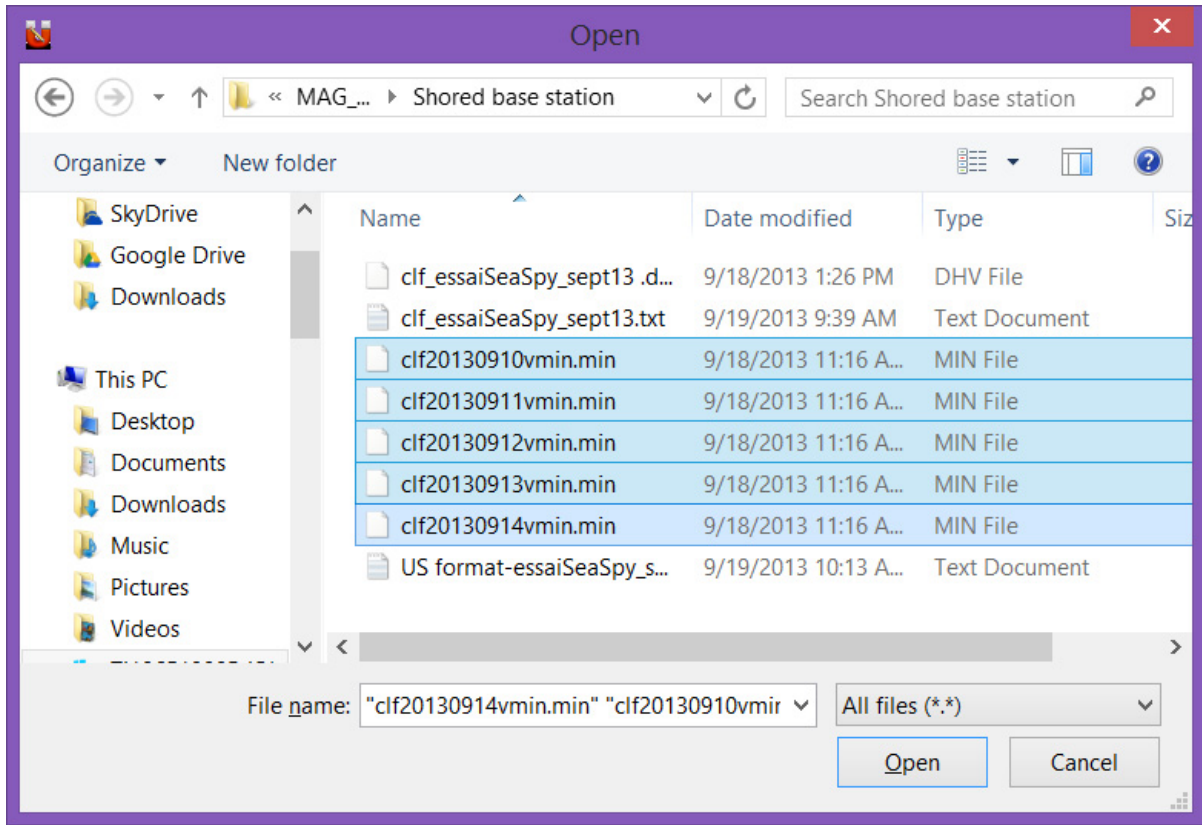


FIGURE 4. Figure 4: Complete Shore Correction Form for CLF Station

