



HYPACK® 2014 Shell Layouts

By Judy Bragg

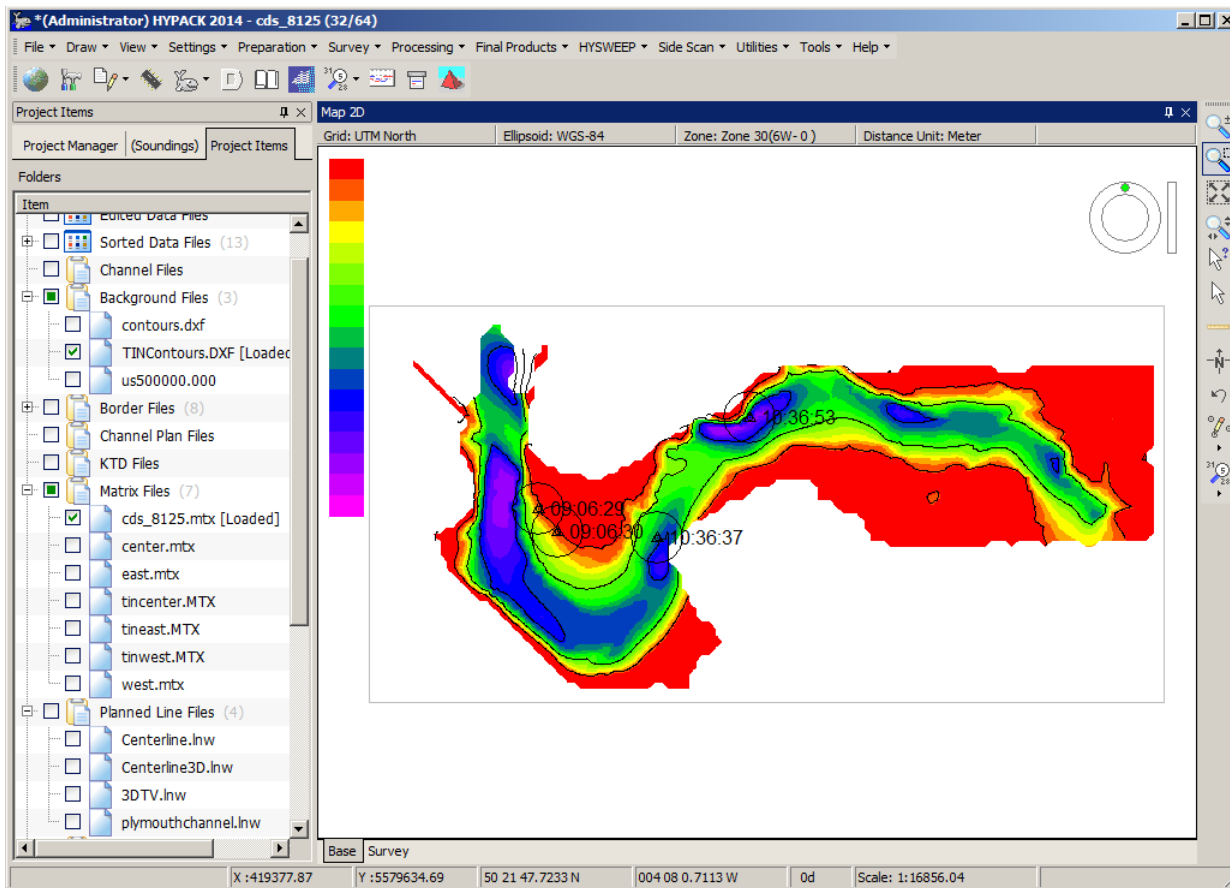
This year our programmer, Bill Bergman, was charged with updating the HYPACK® 2014 interface. After a lot of research and gathering ideas from colleagues, both in and out of the HYPACK office, he has designed and created a new interface that provides all of the functionality of the 2013 release and more.

Don't panic! It is not such a radical change that you can't find anything. In my opinion, the changes are well worth the improved functionality they afford. Here's a sneak peek at a few of the changes you will see very soon.

At first glance, the general look of the HYPACK® 2014 shell is about the same as in the 2013 release; menu and module icons at the top, screen controls on the right, file list on the left and the map view in the center. You can drag the tool bars around, docking them on any side of the shell or just leaving them free-standing and resize the width of the file list and area map.

Now look a little more closely at the default layout of HYPACK® 2014.

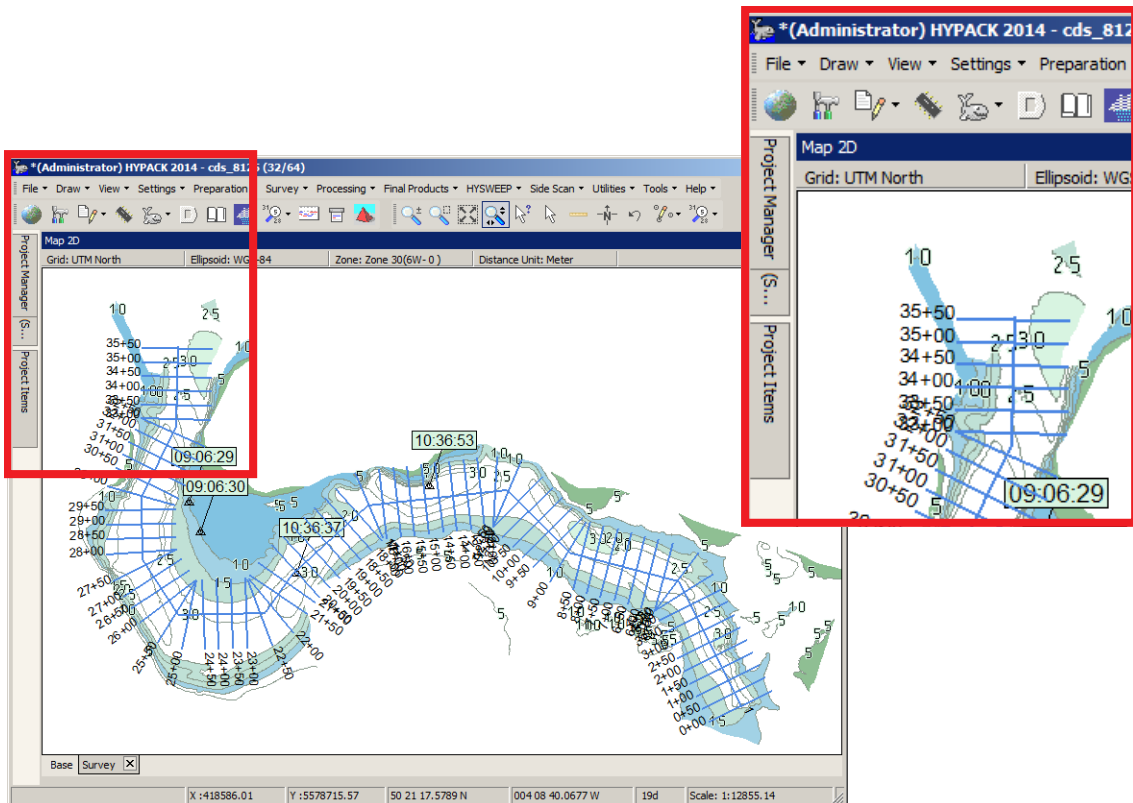
FIGURE 1. HYPACK® 2014 Shell



It's no longer just the project files list on the left, but also the Project Manager and Color Editor. They are all stacked on top of each other, each with its own tab for quick and easy accessibility. No icons or menu selections required!

Did you notice I said that Figure 1 shows the *default* layout? As in HYPACK® 2013, you can drag the toolbars off the side of the shell window then dock them to another side or leave them as free-standing windows. In HYPACK® 2014, you can, not only adjust the widths of the file list and map window, but you can resize and reposition all of the windows—the map view, Project Manager, Color Editor, and file list—into any layout you want or, in one easy click, pin them to the side of the HYPACK® window.

FIGURE 2. Pinned Project Manager, Color Editor and Project Files List



When you pin a window, it “slides out of view” leaving a 0.25 inch (0.5 cm) tab on the side of the window where it is docked. When you want to access the pane, click its tab and it slides into view. When you move your cursor to a different window, HYPACK® knows you have finished in the pinned window and it slides back out of view and out of your way and providing a larger map view display area.

Figure 3 and Figure 4 show a couple more layout possibilities. In Figure 3, the Project Manager, Color Editor and file list are all unstacked and docked separately. You can see that you can dock windows side-by-side or one over another. In Figure 4, the file list is docked across the bottom to provide a wider window in which you can see the file path without scrolling. The Project Manager is pinned on the right.

FIGURE 3. 4-Window Layout

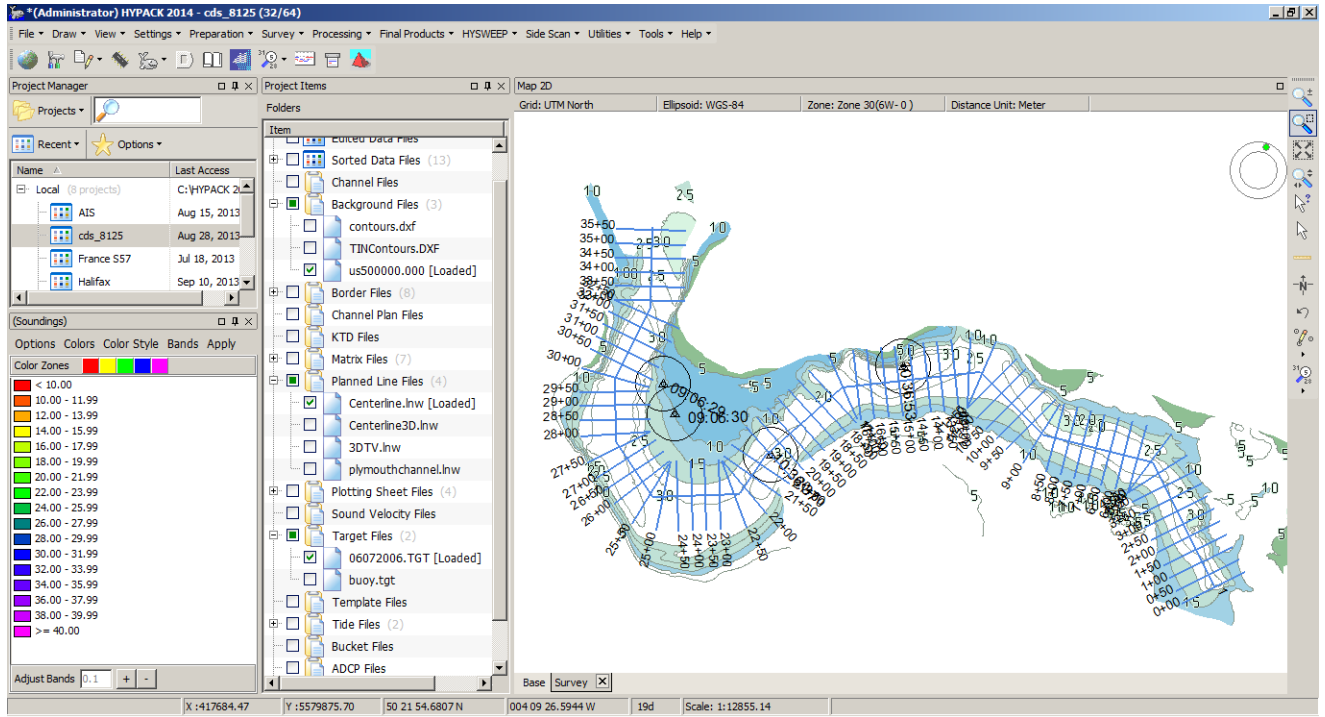
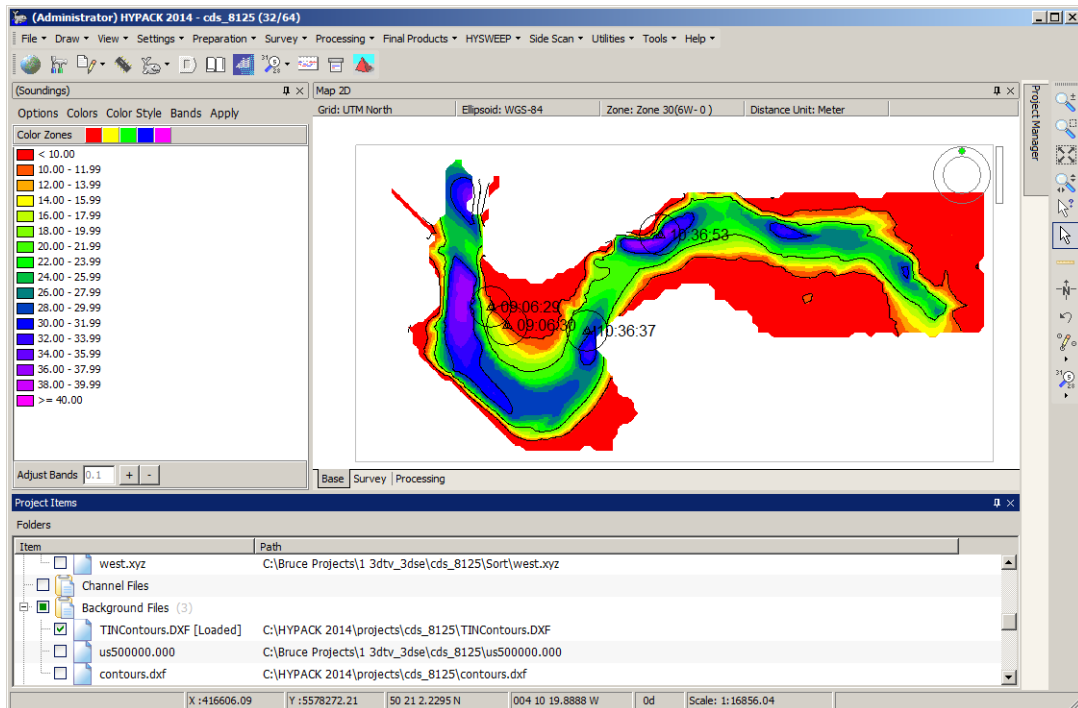


FIGURE 4. 3-Window Layout - Web Maps



With so many layout options now, you may actually like to configure your display differently according to your task at hand. While it's pretty easy to move windows around, Bill made it easier still by enabling you to save and restore your layouts through simple menu selections. At this writing, a saved layout only restores the size and position of the windows: the shell and the windows inside. It does not the toolbars.