



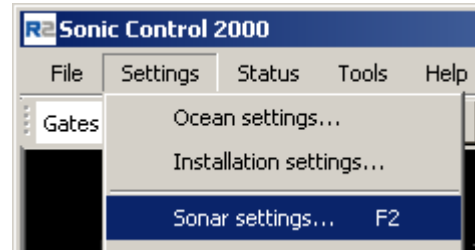
R2Sonic TruePix Available in HYPACK® 2013

By Joe Burnett

In the HYPACK® 2013 release, the capability to collect and process R2Sonic TruePix is available.

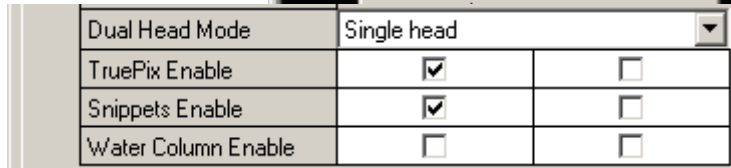
R2SONIC SONIC CONTROL 2000 PROGRAM OPTIONS

1. Select SETTINGS – SONAR SETTINGS.



2. In the Sonar Settings Window, check the following options:

- TruePix Enable
- Snippets Enable

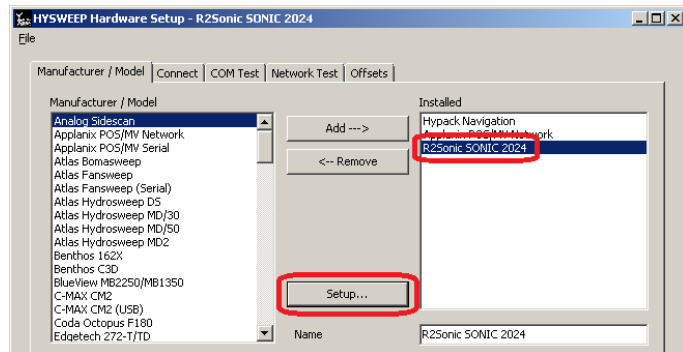


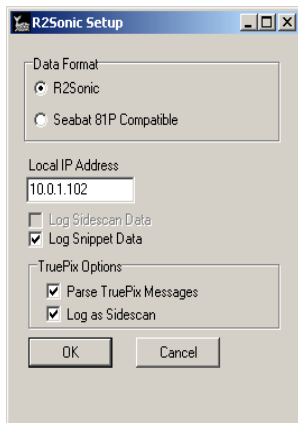
Note: You can enable TruePix or Snippets or both (Continue reading for additional details.)

HYSWEEP® HARDWARE SETUP

1. Highlight R2Sonic SONIC 2024 and click [Setup].

To collect the data, there a few options to enable. Here are the descriptions of each:





Log Snippet Data:

- Records both snippets and TruePix data in *.R2S files (If both are sent simultaneously, otherwise, it will record one, or the other, dependent upon how the R2Sonic Sonic Control 2000 software is set up.)

Parse TruePix Messages:

- Displays TruePix data real-time in Intensity Waterfall Window. (If this box is NOT 'checked', it displays snippets data.)

Log as Side Scan:

- Records the TruePix data in the RSS records of the HSX files. (This duplicates the data in the *.R2S files)
- Useful (to our programming staff) for debugging.

Processing the TruePix data and making the mosaic in GEOCODER™ is the same as the processing of the Snippets data in GEOCODER™. (See http://www.hypack.com/new/portals/1/PDF/sb/07_11/Snippets.pdf.)

Note: The R2Sonic can output both snippets and TruePix data simultaneously, and HYSWEEP® records both in the *.R2S files. However, when processing the data in GEOCODER™, the progra prioritizes reading the TruePix data, over the snippets data, if both reside in the *.R2S files.

To do a comparison between snippets and TruePix, run the same lines twice—one collecting snippets only, and one collecting TruePix only. Currently, GEOCODER™ can not parse TruePix or snippets, separately, if they both reside in the same *.R2S files.
