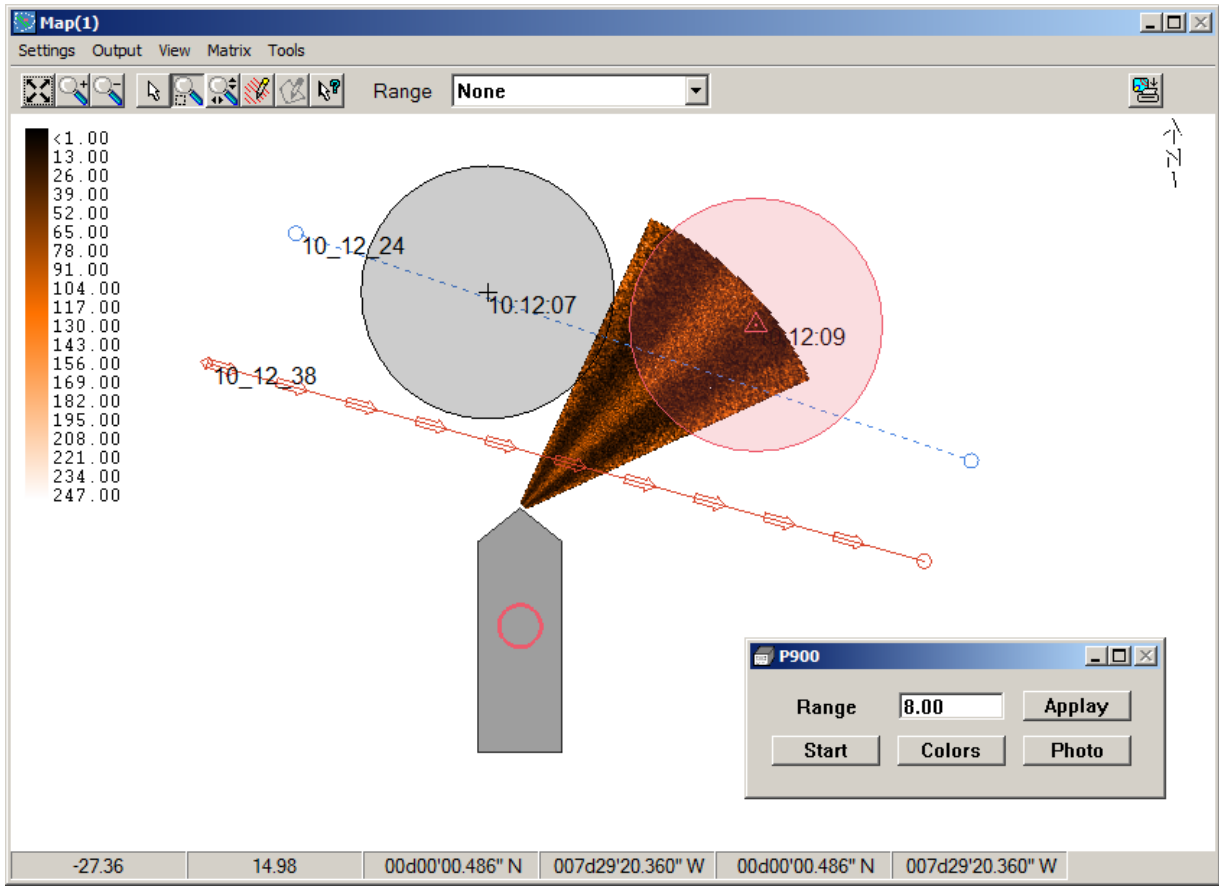




Blue View P900

By Lazar Pevac

The P900 is forward-looking side scan sonar designed for quick detection of underwater objects. It was recently added to the list of Survey drivers.



SETUP

There is no special setup dialog. You use just general settings:

- Set starboard/forward offset of the device relative to the boat origin.
- If the device does not match the vessel orientation, adjust the yaw offset.
- No need to connect. The driver will detect the P900 automatically.
- The recommended update rate is 500ms

RUNTIME

- The Start/Pause button allows you activate/deactivate the device.
- If you want to change the sonar range, select the new one and press [Apply].

-
-
- [Colors] opens the color dialog. It is recommended to use side scan colors with a range of 1-255 and step of 1. The sonar intensity return will be adjusted to this range.
 - The Photo button creates a new file that stays permanently in the background.