



# Some Basic Items that have Changed

By Roy Goyette

HYPACK® 2014 has introduced some dramatic changes to the main shell and I'm sure every user is wondering how to get to some items that have changed. I thought I'd write about two of them that were quick to find or fix.

## THE MEASURING TOOL

The first one I noticed right away when I first saw the new shell was that the measuring tool seemed to be gone. This is a tool I've used a lot over the years and, at first, I was alarmed that it seemed to be gone. But fear not! It's still there and, in fact, it is actually in a place that makes more sense to me.

FIGURE 1.

I'm talking about the tool that, when using the default cursor, you drag a line on the screen and it would then give you the distance and azimuth of your line in the ruler field at the top of the screen.

Now to perform a measurement in the shell, you click on the ruler on the screen control bar (right in Figure 2) then click and drag your cursor to obtain the measurement in the ruler toolbar. The results are the same. It's just a cleaner way of accessing the tool.

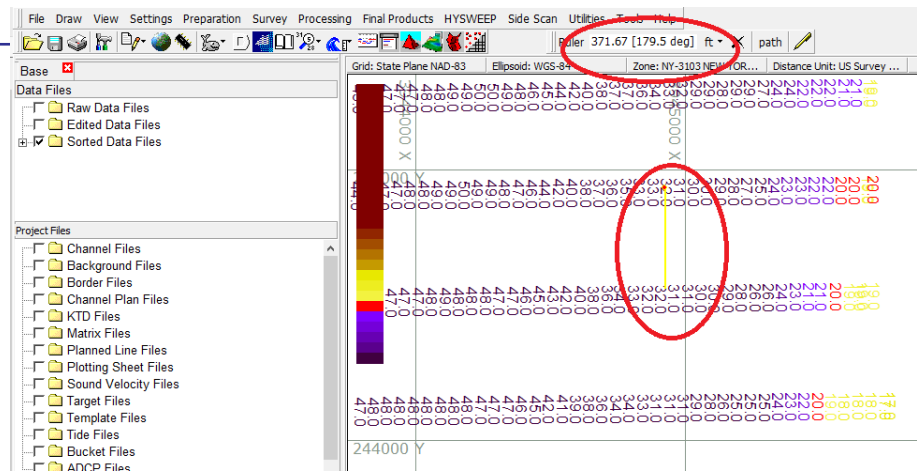
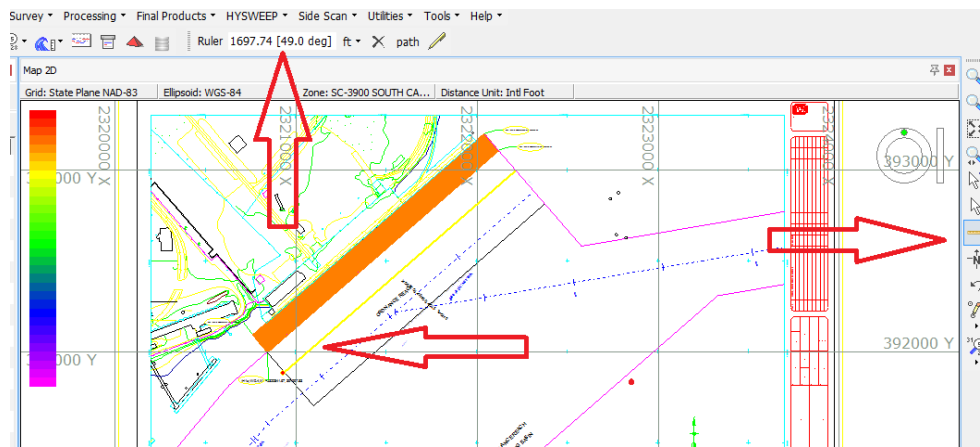
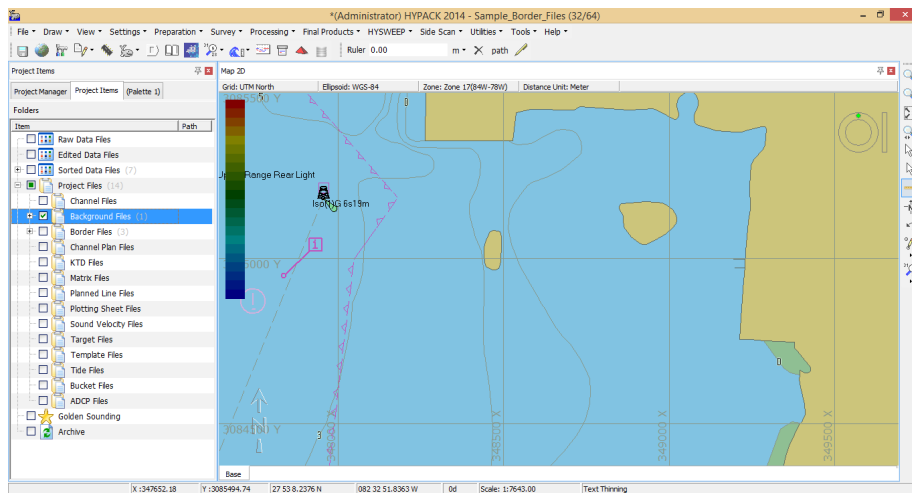


FIGURE 2. Measuring Distance and Azimuth in HYPACK® 2014



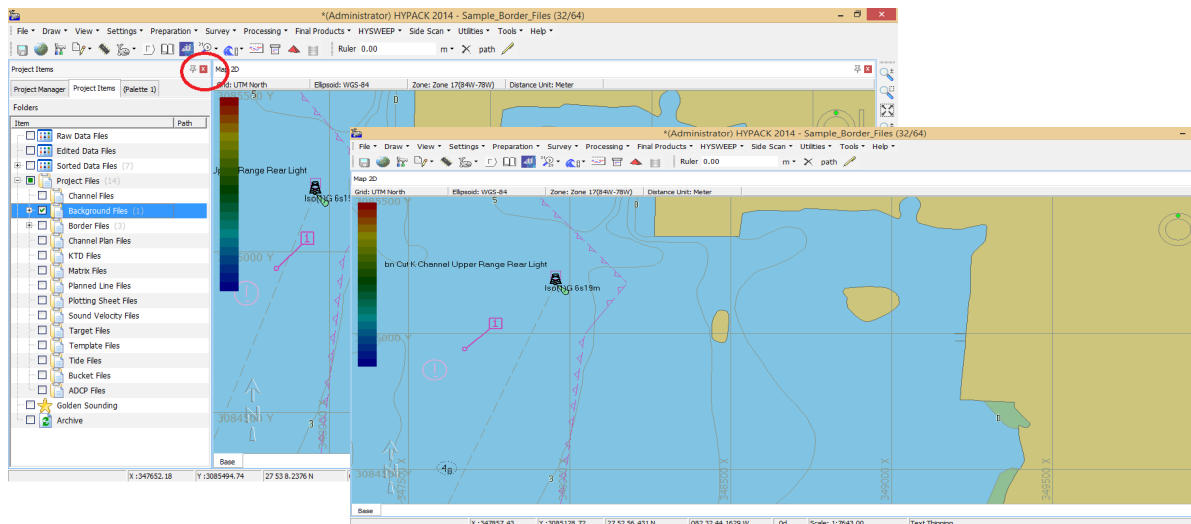
One of the most useful changes to the 2014 interface will be the ability to remove the projects and files listing from the main screen giving you more room to work on your map.

**FIGURE 3. The Default Layout**



To see as much of the map/chart as possible, simply click the red X in the project listings area to close each panel.

**FIGURE 4. Click X to Close Each Panel**



Keep clicking that red X until all of the tabs are closed maximizing your view of your map.

This is just great for maximum space, but when you are done working in the map you'll probably want to get back to the normal interface with the project listings. But how do you do that?

Programming has given us the best of both worlds you can restore just one tab or all the tabs by going to your view menu and either enabling one by clicking next to the tab name Or the default view by clicking the Load Layout Default choice.

**FIGURE 5.** Restoring One Panel at a Time Through the View Menu (left) or Restore them all with the Default Layout (right)

