



**HYPACK**  
a xylem brand

Sounding Better!

## HYPACK® and Kongsberg KMALL Driver with SIS 5.6

By Caryn Zacharias

Last month a couple of the HYPACK programmers, a Kongsberg rep and I were able to spend a day on a University of New Hampshire (UNH) vessel running a Kongsberg 2040P and HYPACK® 2021. Our goal was to verify if HYPACK® and SIS 5.6 played nicely, as we have had some reports of configuration issues with SIS 5.X. **At the end of the day, we successfully configured HYPACK® and SIS 5.6 to run on independent computers and connect via UDP using both the Data Distribution configuration and the Multicast configuration.**

We were not able to check the compatibility with SIS 5.7 as we learned the Kongsberg 2040P uses SIS 5.6 and the Kongsberg 2040 uses SIS 5.7. We only had access to the 2040P at this time.

Our setup was used two (2) computers, one running HYPACK® the other running SIS 5.6. There are two SIS and HYPACK® configurations: Data Distribution and Multicast.

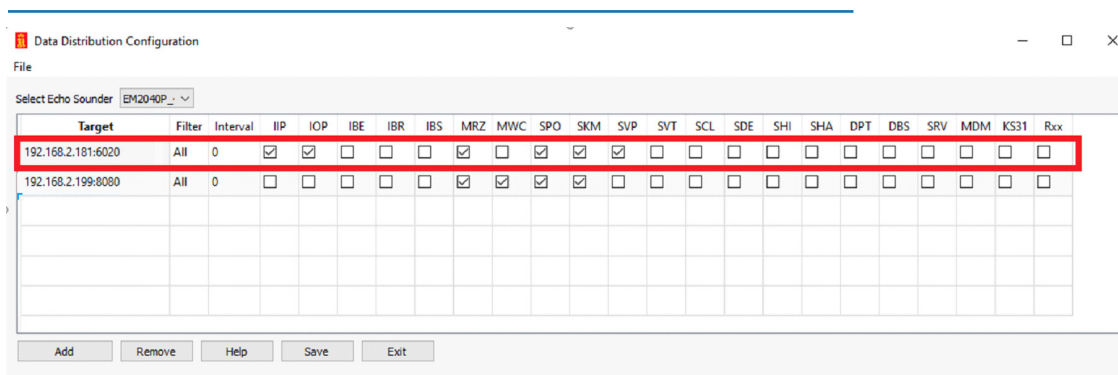
### USING DATA DISTRIBUTION FROM SIS

Older SIS versions used this option with 2 computers. It still exists in 5.6 with some changes.

#### SIS COMPUTER

Set up in the Data Distribution window. Enter the HYPACK COMPUTER IP Address under the Target Field. Enter the Port number, HYPACK defaults to use 6020. Then choose the datagrams needed. HYPACK prefers IIP, IOP, MRZ, SPO, SKM and SVP (see below in RED).

**FIGURE 1. Data Distribution Setup for SIS Computer**

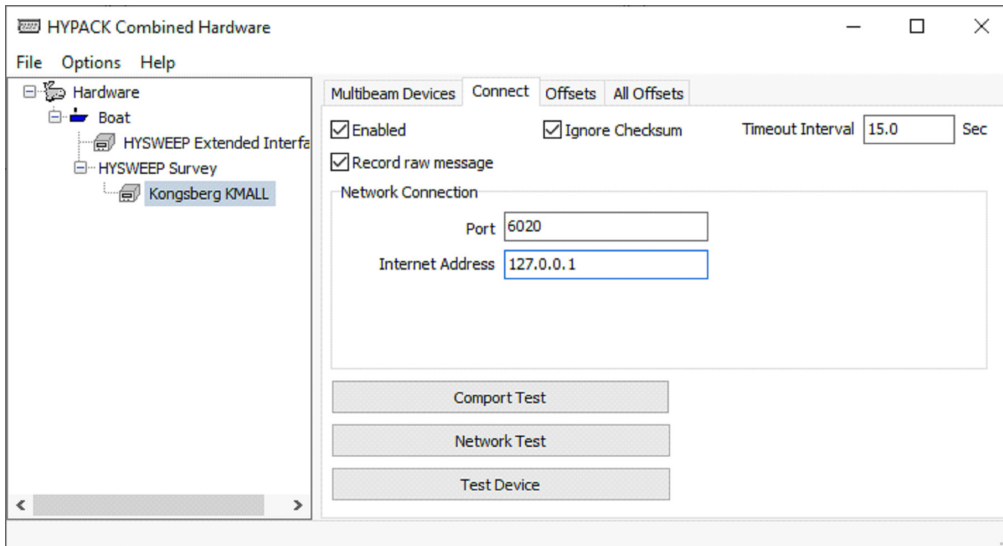


## HYPACK COMPUTER

Open HYPACK Combined Hardware.

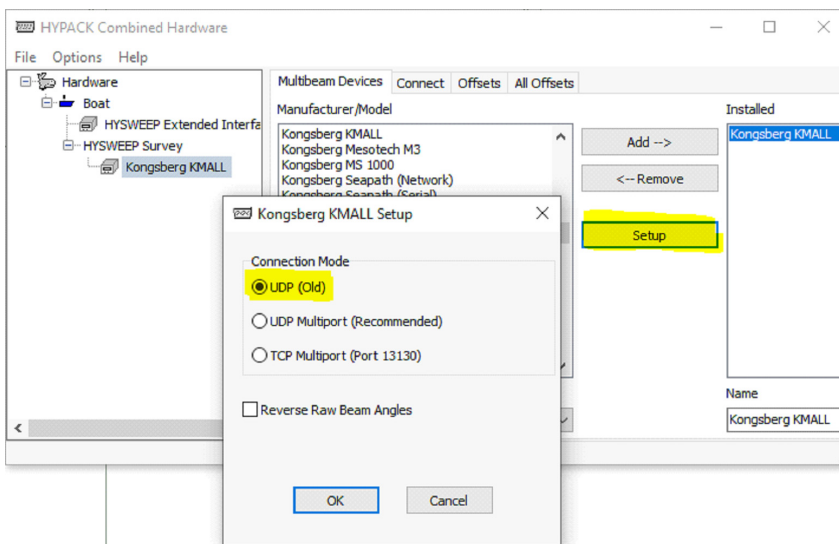
1. Add the Kongsberg KMALL Driver.
2. Under the Connect Tab Set the IP address (Use the SIS Computer IP) and Port Number (match the one entered in Data Distribution).

**FIGURE 2.** HYPACK Combined Hardware Setup for HYPACK Computer



3. Kongsberg KMALL Setup - Select UDP (old).

**FIGURE 3.** Kongsberg KMALL Setup Window

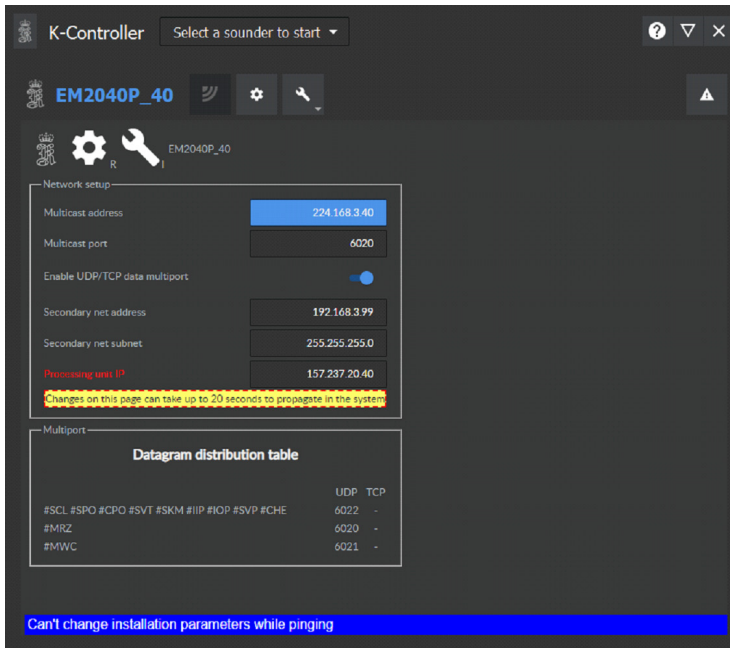


## USING UDP MULTIPORT

### SIS COMPUTER

K-Controller: Multicast address: 224.168.3.40 (used for this example).

FIGURE 4. K-Controller Setup on SIS Computer

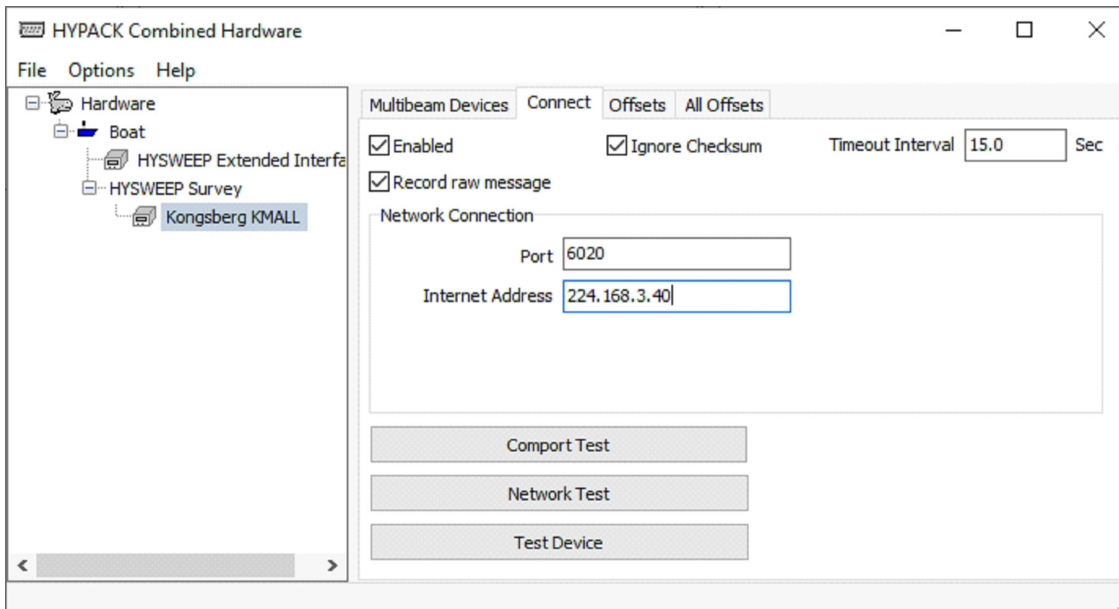


## HYPACK COMPUTER

Open HYPACK Combined Hardware.

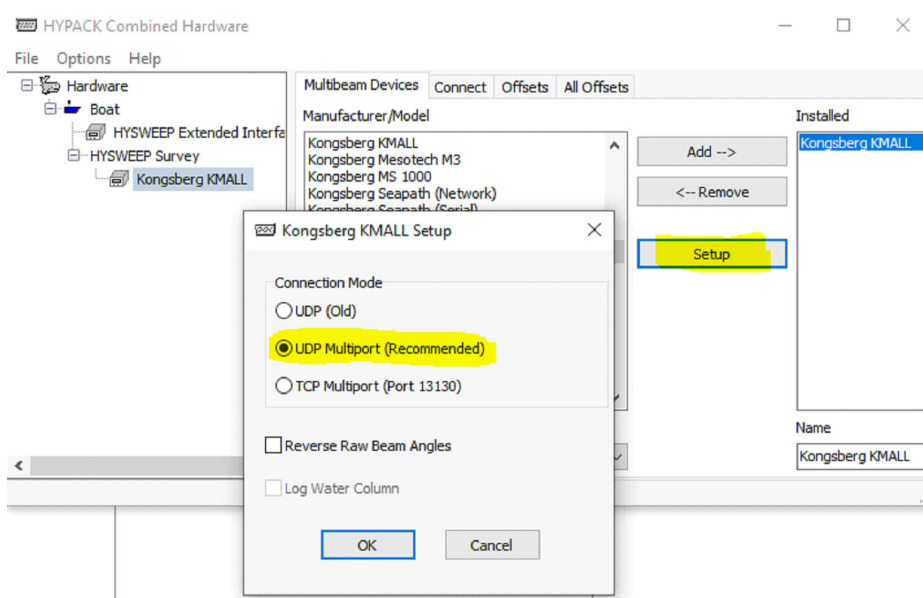
1. Add the Kongsberg KMALL Driver.
2. Under the Connect Tab set the IP address (Use the IP entered in the K-Controller - Multicast Address (this example 224.168.3.40) and Port Number (default is 6020, however it must match the one entered in K-Controller if it is different).

FIGURE 5. HYPACK Combined Hardware Setup for HYPACK Computer



3. Kongsberg KMALL Setup – Select UDP Multiport (Recommended).

**FIGURE 6.** Kongsberg KMALL Setup Window



## STAY TUNED

We plan to do more testing with TCP Multiport as well as running HYPACK and SIS on the same computer. We also need to confirm connection with SIS 5.7.