



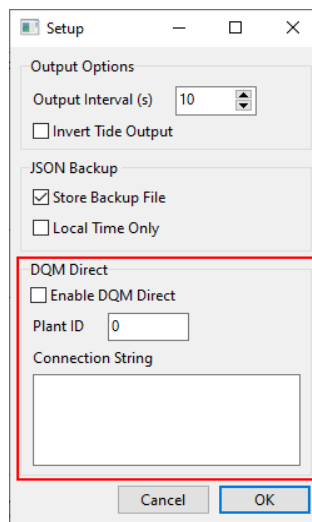
Dredge Quality Management (DQM) Direct for Hopper, Cutter-Suction, and Crane Dredges

By John Marinuzzi

The USACE has recently added the ability to send DQM data directly to their servers through the internet. HYPACK has incorporated this function into our hopper, cutter-suction, and crane DQM device drivers. We call it “DQM Direct.” This will allow customers to eliminate their onboard DQM computer, saving space and money. Below is a brief explanation of each device driver in HYPACK’s Dredge Quality Management tools.

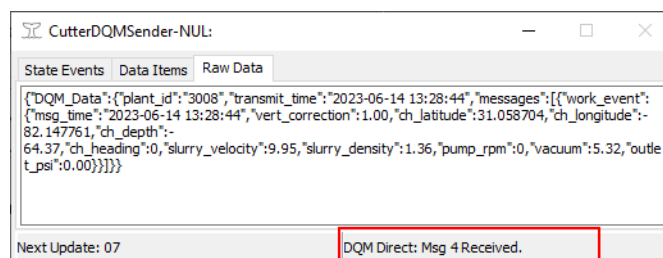
CUTTERDQMSENDER.DLL

CutterDQMSender has been around for a few years. If you have done any dredging with DREDGEPACK in the U.S. for the Army Corps of Engineers, you have probably used it. The latest version will handle DQM Direct. Everything else in the driver is the same except for the driver setup. You will now find the options highlighted below:



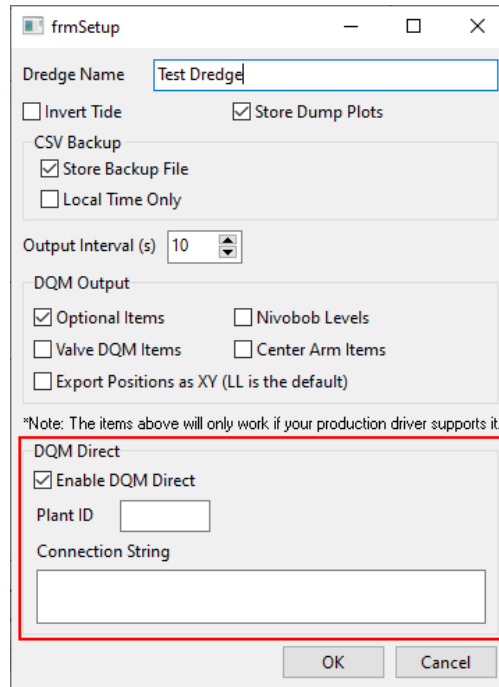
Here you can enable DQM Direct and enter your Plant ID and Connection String (provided by the USACE).

The status of the connection will be shown in CutterDQMSender’s runtime window in the bottom right-hand panel shown below:

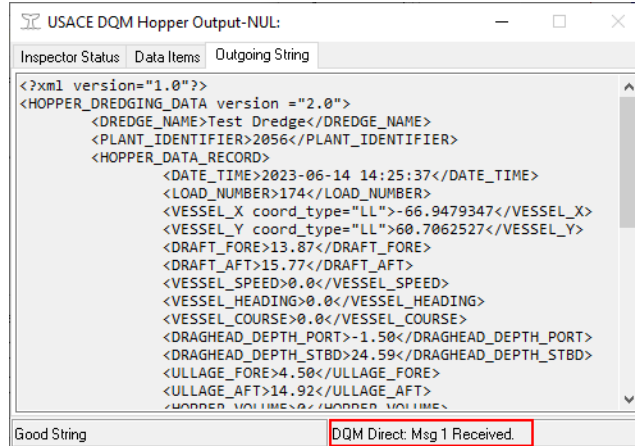


HOPPERDQMSENDER.DLL

HopperDQMSender is an updated version of SI_Sender.dll. Like CutterDQMSender, you will find the following option in the driver setup for DQM Direct:

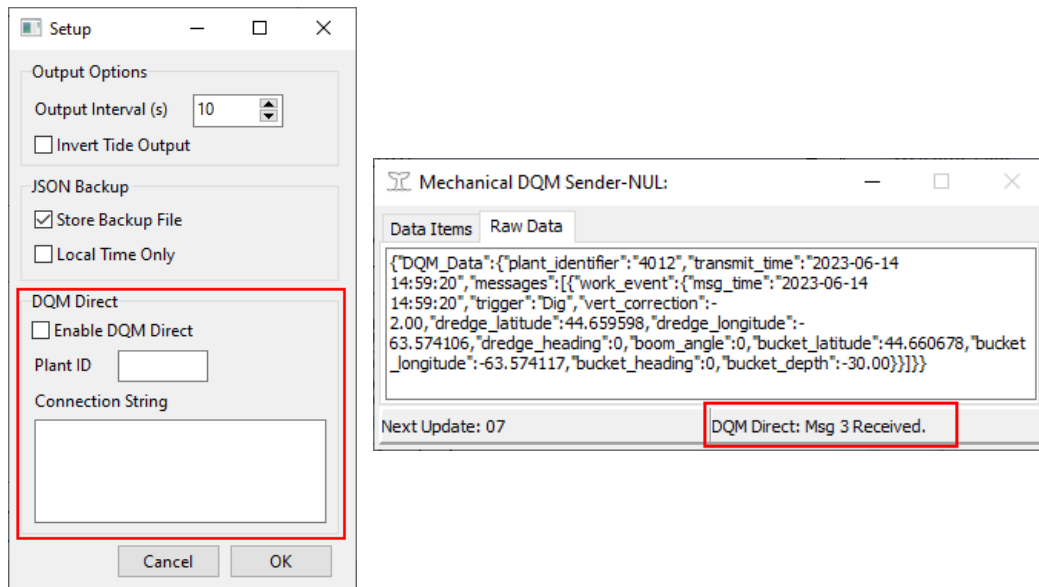


The status of the connection will be shown in HopperDQMSender's runtime window in the bottom right-hand panel shown below:



MECHANICALDQMSENDER.DLL

MechanicalDQMSender is the newest driver in the Dredge Quality Management tools. The setup and runtime windows are similar to the CutterDQMSender and HopperDQMSender:



MechanicalDQMSender currently works with the newest version of DQM_Mechanical.dll. Mechanical DQM was recently introduced by the USACE. The full specification will be available soon.

HOW TO SET UP DQM DIRECT

You must contact the USACE to obtain a Plant ID and Connection String specific to your dredge prior to setting up DQM Direct in HYPACK®.

DQM Direct needs a solid internet connection to work properly. If the internet connection cuts out, it will queue the messages until it is restored. However, queuing messages for a long period of time is not recommended.

If you would like to use DQM Direct, or have any questions, please feel free to email me at nuzzi@hypack.com.