



Vessel Configuration Manager

By Andrew Clos

NOTE: Updated 10/23/2023 - Vessel Wizard is now Vessel Manager, images and text updated to reflect this change.

Hello Fellow HYPACK Users,

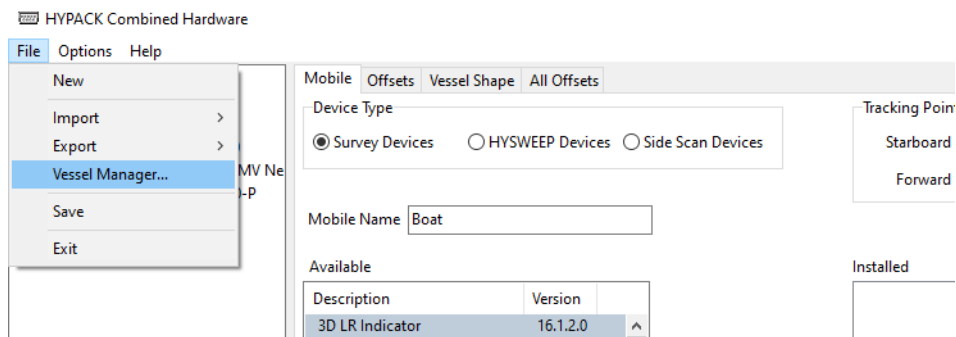
A new feature has been added to the HYPACK Hardware program that will allow you to quickly save and load vessel configurations. The Vessel Manager functions similarly to the “Import All” and “Export All” functions, but it stores these archived vessel configurations in the C:\HYPACK Store folder and allows you to give unique names to your various configurations.

Storing and viewing your vessel configurations in one location that is not tied to a specific project directory will make it more convenient to apply vessel settings to multiple projects or survey platforms.

ACCESSING THE VESSEL MANAGER

Open HYPACK 2023 and enter the Hardware program by clicking Preparation -> Hardware Setup. A new “Vessel Manager” option has been added to the File menu of the Hardware program (Figure 1). Click on it to open the Vessel Manager dialog box.

Figure 1. The Vessel Manager Option in the File Menu of HYPACK Hardware



USING THE VESSEL MANAGER

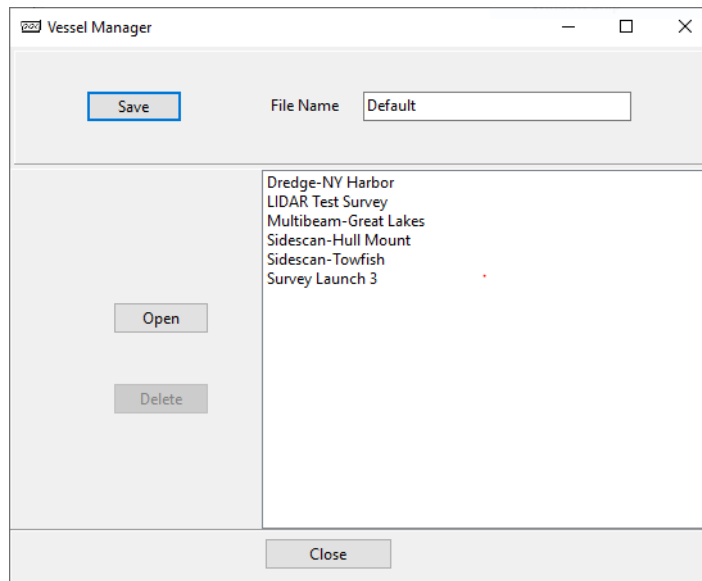
Once opened, the program looks for a folder called “Vessels” in the C:\HYPACK Store directory, and creates the folder if it is not already present. Any valid vessel configurations in the Vessels folder will be displayed in the large list box area in the middle of the Vessel Manager dialog box.

Selecting [Save] will save the currently opened project's hardware configuration in zip file format to the Vessels folder. The user can provide a name for their hardware configuration, and if a vessel configuration with the same name already exists, a prompt will be displayed that asks if you'd like to overwrite the existing configuration.

Selecting [Open] or double clicking one of the existing configurations will load the corresponding vessel hardware configuration and apply it to the current project.

Finally, and as you may have guessed, the [Delete] button will delete the selected vessel configuration from the HYPACK Store\Vessels directory with a warning prompt.

Figure 2. The Vessel Manager Dialog Box



Thank You

I hope this new tool makes it a little easier for you all to manage hardware configurations and restore settings! Please let me know what you think of the new tool.

Thank you,
Andrew Clos