

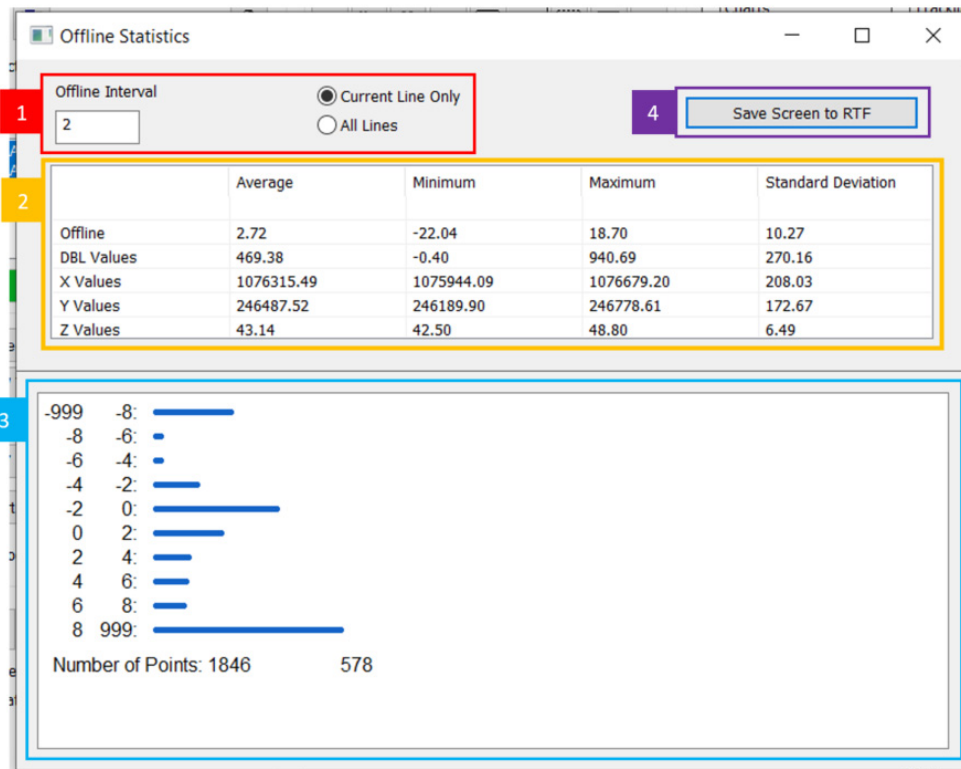


# Offline Statistics in SBMAX64

By Jocelyn Kane

A capability that was previously only available in SBMAX32, Offline Statistics is now included in SBMAX64. A lesser known tool, it can come in handy, so I will walk through how it is used. If you have used it before, there is an additional new feature in Offline Statistics as well.

Figure 1. Offline Statistics Dialog



## 1. Settings

Located under the File menu in SBMAX64, click Offline Statistics after you have loaded your survey files. The dialog will open and information will be displayed using the default settings which are an Offline Interval of 5 work units, and All Lines are included in the calculations. These settings are at the top of the dialog. Type a new number in the box under Offline Interval and press Enter to change it to the value you would like. If you only want to see the Offline Statistics of a single line, click the radio button for Current Line Only. The line used is the one selected in the file list on the main window of SBMAX64, so the next step is to pick the line in the list that you would like. All Lines uses all the lines loaded into SBMAX64.

## 2. The Table

Now that you have the settings for the Offline Statistics you are looking for, you will see all the information calculated based on them in the table and histogram below. The table includes rows of data for the Offline, DBL Values, X Values, Y Values, and Z Values, and has the Average, Minimum, Maximum, and Standard Deviation for each of them in the columns.

## 3. The Histogram

At the bottom of the Offline Statistics dialog is the histogram, which is a visual representation of the distance off line of every point, broken up into ten groups of five work unit intervals, from negative to positive DOL. The amount of points in each group is drawn next to it. Also, the total number of points included in the calculation is listed under the graph, and the number of points in the biggest group is labeled next to it.

## 4. Saving

Now that you have all of this useful data, a new feature that was added is the option to save it. At the top right of the Offline Statistics dialog click the button that says [Save Screen to RTF]. Simply navigate to the file location of your choice, type in what the file will be named, and click Save and you will have all of your information for later use, repeating the steps with different settings and lines to save all the combinations of data you need.

The resulting file you saved will contain the Offline Interval, which lines were used, and a screen shot of the Offline Statistics dialog.

Figure 2. The Saved RTF

