

JABSCO

a xylem brand

Model 12560-0001

Self-Priming Pumps

INSTALLATION AND OPERATION MANUAL



FEATURES

Body:	Plastic
Impeller:	Jabco neoprene compound
Seal:	Lip type
Ports:	Slip-on barbs for 5/8" ID hose
Motor:	Permanent magnet type, fully enclosed, with stainless steel shaft complies with USCG electrical standards (Title 33, chapter I, part 183; subpart 1) for IGNITION PROTECTION on gasoline powered vessels.
Dimensions:	3-1/4" (83mm) high, 6-1/2" (165mm) long, 5" (127mm) wide
Weight:	4-1/2 lbs. (2 kg) approx.

VARIATIONS AVAILABLE

Model	Voltage DC	AMP Draw	Fuse Size
12560-0001	12	7	10

APPLICATION

Use for bilge pumping, live well circulation, washdown and general pumping requirements. If bilge water contains significant amounts of oil, the standard impeller must be replaced with a nitrile impeller 6303-0003-P to avoid impeller swell. With a wet impeller, pump will



WARNING: Explosion hazard.
Do not use motor pump for pumping gasoline, solvents or flammable liquids with flash point below 100°F (37.8°). Doing so may result in explosion which could cause property damage, personal injury or death.



WARNING: Explosion hazard.
Do not operate with rivets removed from motor case. Explosion resulting in property damage, personal injury and or death can occur. Case openings must be sealed to avoid explosion and maintain ignition protection rating.

produce a suction lift of about 4 feet (1.2m) and lift of 20 feet (6.1m) when primed. If the pump is dry, it will prime about 1.5 feet (0.46m). BE SURE SUCTION LINES ARE AIRTIGHT.

INSTALLATION

The pump must be mounted in a dry location. The motor is not waterproof and must not be submerged. SELECTION OF A COOL, VENTILATED location will generally extend pump motor life. The unit can be mounted in any desired position. It is best to mount so that water dripping from loose port connection will not wet the motor. The pump head may be mounted at 180° increments on the motor to allow change in flow direction.

OPERATING INSTRUCTIONS

Flexible impeller pumps must not be run dry, as the pumped liquid is the lubricant for the impeller. Observe the outlet and shut off

pump as soon as liquid stops flowing. An automatic level switch is convenient to control the pump.

Note: If pump is idle for extended periods, the impeller may stick to the pump body, preventing motor rotation and causing blown fuses. To correct, remove end cover and impeller. Clean body and impeller, then lubricate with water or small amounts of grease before assembly.

Temperature of pumped liquid may be in the range of 45° - 160°F (10°-71°C) or 8.7 psi.

Pressure for normal operation should not exceed 20 feet of head (6.1m).



CAUTION: Motor runs hot. Nominal motor temperature is 180°F (82°C). Prolonged contact during operation may cause a burn.

HEAD CAPACITY TABLE

P.S.I.	Total Head		Capacity	
	Feet	Meters	GPM	L/Min.
-	Open flow	-	5.0	18.9
2.1	5	1.5	4.6	17.4
4.3	10	3.0	3.7	14.0
8.7	20	6.1	1.7	6.4

PLUMBING CONNECTIONS

Pumps have slip-on fittings for 5/8" ID hose. Use hose that does not kink when bent and with sufficient wall thickness to prevent collapse when used on suction side of pump. Hoses should be routed so that some water will be retained to pump body to wet the impeller. Wetting the impeller aids in priming and extends impeller life. Use a strainer on the intake hose to stop trash and solids from going through the pump. All hoses must have airtight connections to enable faster priming.

When units have been idle or stored for long periods of time, the impeller may stick to the pump body causing fuse to blow. Remove end cover and manually free impeller. Replace end cover and fuse.



WARNING: Explosion hazard.
If pump is operated in an area containing flammable vapors, motor wire leads must be joined by insulated mechanical locking connectors. Loose or inadequate wire connections can spark resulting in an explosion which can cause property damage, personal injury or death.

ELECTRICAL CONNECTIONS

Connect black wire to negative (-) terminal of battery. The orange wire should run to a fused overload protected switch or circuit breaker with a 10 amp rating, with a wire from switch or breaker to positive (+) terminal of battery.

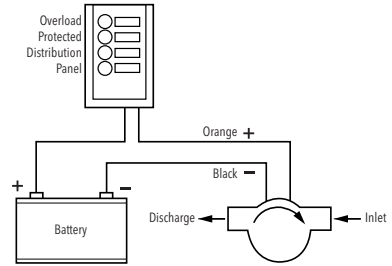
Electrical circuit must be independent of all other accessories. Failure to connect black wire to negative and orange wire to positive will result in backwards motor rotation and possible motor and pump damage.

Correct motor rotation is clockwise looking at shaft end of motor. Use proper wire size as determined by wire table elsewhere on this sheet.

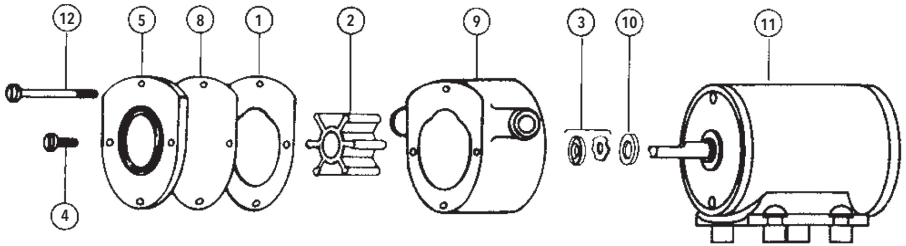
MINIMUM WIRE SIZES

Wire length between battery and motor	12V DC
1-10 ft (3m)	#12
11-20 ft (6m)	#10
21-30 ft (9m)	#8

WIRING DIAGRAM



EXPLODED VIEW



PARTS LIST

Key	Description	Qty.	Part Number
1	Gasket Kit	1	12558-0000
† 2	Impeller Kit, Neoprene	1	6303-0001-P
3	Lip Seal Kit	1	1040-0000
4	Screw Kit, End Cover (2 per kit)	2	-
5	End Cover Kit	1	-
8	Wearplate Kit	1	-
9	Body Kit	1	12554-0000
10	Slinger Kit (3 per kit)	1	6342-0000
11	Motor	1	-
12	Screw Kit, Pump Head to Body (2 per)	2	91014-0010
	Pump Head Kit		12590-0001

† 6303-0003-P Oil Resistant "Nitrile" Impeller Kit available separately.

INSTALLATION

DISASSEMBLY

- Remove top and bottom end cover screws and remove pump head from motor.
- Remove remaining end cover screws.
- Remove end cover, wearplate, and gasket
- Withdraw impeller.
- Pry seal retainer from seal cavity and press seal out of cavity from impeller bore side.
- NOTE:** Do not tamper with or disassemble motor.

ASSEMBLY

- Lubricate seal and press into seal cavity, with open side of seal facing impeller. Center seal retainer (concave side up) in seal cavity and press firmly against seal using 11/16" diameter dowel.
- Install slinger on shaft 1/16" from motor hub. Lubricate motor shaft.
- Locate body on motor.
- Align flat in impeller with motor shaft flat and install impeller into impeller bore.
- Replace gasket, wearplate, end cover, and end cover screws.
- Secure pump head to motor with long machine screws.

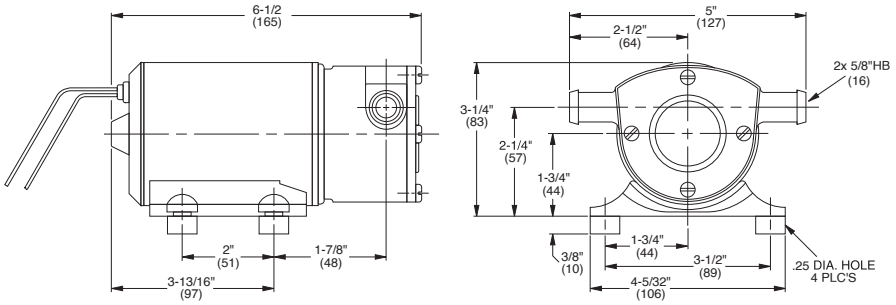
MAINTENANCE

Check wires and connections to be sure corrosion is not adding additional resistance to the motor circuit and causing a low voltage condition at the motor. Low voltage can inhibit motor from starting and can cause fuse to blow. Full voltage should be available to prevent motor damage.

If pump is to be in freezing temperatures, drain by loosening end cover.

Service kits, or at least spare impellers, should be carried aboard to be assured of pumping capability.

DIMENSIONAL DRAWING Inches (mm)



NOTICE: END OF LIFE PRODUCT DISPOSAL.

Handle and dispose of all waste in compliance with local laws and regulations.

WARRANTY

XYLEM LIMITED WARRANTY WARRANTS THIS PRODUCT TO BE FREE OF DEFECTS AND WORKMANSHIP FOR A PERIOD OF 1 YEAR FROM DATE OF MANUFACTURE. THE WARRANTY IS EXCLUSIVE AND IN LIEU OF ANY AND ALL OTHER EXPRESS OR IMPLIED WARRANTIES, GUARANTEES, CONDITIONS OR TERMS OF WHATEVER NATURE RELATING TO THE GOODS PROVIDED HEREUNDER, INCLUDING WITHOUT LIMITATION ANY IMPLIED WARRANTIES OF MERCHANTABILITY AND FITNESS FOR A PARTICULAR PURPOSE, WHICH ARE HEREBY EXPRESSLY DISCLAIMED AND EXCLUDED. EXCEPT AS OTHERWISE PROVIDED BY LAW, BUYER'S EXCLUSIVE REMEDY AND SELLER'S AGGREGATE LIABILITY FOR BREACH OF ANY OF THE FOREGOING WARRANTIES ARE LIMITED TO REPAIRING OR REPLACING THE PRODUCT AND SHALL IN ALL CASES BE LIMITED TO THE AMOUNT PAID BY THE BUYER HEREUNDER. IN NO EVENT IS SELLER LIABLE FOR ANY OTHER FORM OF DAMAGES, WHETHER DIRECT, INDIRECT, LIQUIDATED, INCIDENTAL, CONSEQUENTIAL, PUNITIVE, EXEMPLARY OR SPECIAL DAMAGES, INCLUDING BUT NOT LIMITED TO LOSS OF PROFIT, LOSS OF ANTICIPATED SAVINGS OR REVENUE, LOSS OF INCOME, LOSS OF BUSINESS, LOSS OF PRODUCTION, LOSS OF OPPORTUNITY OR LOSS OF REPUTATION. THIS WARRANTY IS ONLY A REPRESENTATION OF THE COMPLETE LIMITED WARRANTY. FOR A DETAILED EXPLANATION, PLEASE VISIT US AT www.xylem.com/en-us/support/, CALL OUR OFFICE NUMBER LISTED, OR WRITE A LETTER TO YOUR REGIONAL OFFICE.

RETURN PROCEDURE

Warranty returns are conducted through the place of purchase. Please contact the appropriate entity with a receipt of purchase to verify date.

Xylem Inc. – USA

17942 Cowan
Irvine, CA 92614

Xylem Inc. – UK

Harlow Innovation Park
London Road, Harlow, Essex, CM17 9TX

Xylem Inc. – CHINA

30/F Tower A, 100 Zunyi Road
Shanghai 200051

Xylem Inc. – HUNGARY KFT

2700 Cegléd
Külso-Kátai út 41

Xylem Inc. – AUSTRALIA

14 Emporium Avenue
Kemps Creek, NSW 2178

www.xylem.com/jabsco

© 2024 Xylem Inc. All rights reserved

Jabsco is a trademark of Xylem Inc. or one of its subsidiaries

43000-0317 Rev. C 09/2024