

SSM-iCON 250

Residential metering



powered by **FlexNet®**

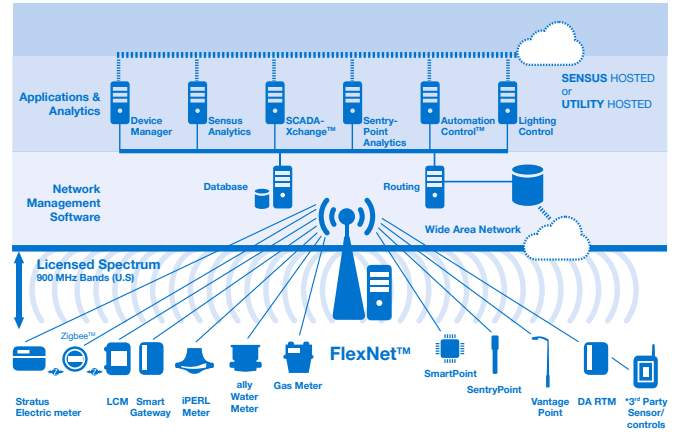
proven 99.5% read rate

**Integrated connected
solutions**



The **SSM-iCON 250** smart meter by Pietro Fiorentini incorporates the latest ultrasonic measurement technology, the flexibility of an **interchangeable communication module** featuring the **Sensus** AMI communication protocol.

Equipped with state-of-the-art monitoring sensors it can stop the gas flow for temperature (fire), pressure or seismic events as well as from remote, to enhance customers and network safety.



Design standards and approvals

The SSM-iCON 250 is designed to meet ANSI B109.6, AGA Ultrasonic Gas Meters Engineering Technical Note as well as key features compliance to OILM R137, ANSI B109.0 (draft), PS-G-06 and EN14236. The meter and communication module are certified independently, Class 1 Div.1 for the meter, while Class 1 Div. 2 for the communication module.



B109.6



B109.0



PS-G-06



EN14236



OILM R137



Meter:
Class 1 Div.1



Comm module:
Class 1 Div.2

SSM-iCON 250 powered by Sensus competitive advantages



Emergency shut off for fire event



Emergency shut off for earthquake



Commercial shut off for tampering and remote soft close



Service regulator performance monitor



Simple HMI with LCD display. Single button operation



Sensus operates three world-class data centers in North America



Reduced infrastructure costs and strengthen network performance



Proven 99.5% read rates



Class 1 Div.1 Haz-loc certification for the meter, while and Class 1 Div.2 for the communication module



Emergency shut off for over-pressure event



Emergency shut off for Overflow



Gas service pressure and temperature monitoring



Non-proprietary open protocol (DLMS)



Biomethane (RNG) compatible and 20% Hydrogen blending compatible.



Highest signal power and range in the industry: 10 - 1000X more power than devices on unlicensed spectrum



Extensive device Support: FlexNet® supports a wide variety of devices and meters



900MHz licensed, redundant, point-to-multipoint design

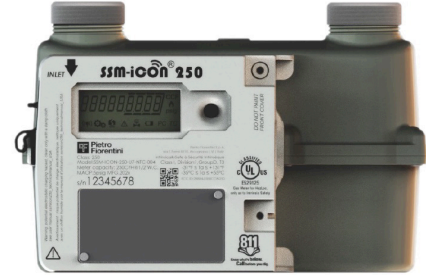


Up 20 years battery life for both meter and communication module

SSM-iCON 250

Suitable for use with natural gas, biomethane and hydrogen blends (up to 20%), this smart meter is used for **residential applications** on low and medium pressure gas distribution networks.

An optically isolated weatherproof connection provides a non-wired full duplex connectivity between the meter and the Communication module.



Features

Features	Values
Capacity	7 m ³ /h at 0.125 kPa differential pressure 250 cfh at 1/2" w.c. differential pressure
Maximum Operating Pressure*	up to 34.5 kPa up to 5 psig
Ambient temperature*	from -35°C to 55°C from -30°F to 130°F
Ingress protection	Compliant to IP67 and NEMA 4X
Communication interfaces	Optically isolated connection to remote communication module and local BLE
Gas volume compensation	Temperature compensated (TC) and non temperature compensated (NTC)
Connections	10LT, 20LT, Sprague (other on request)
Dimensions	6" HUB distance: 9" x 6" x 5" footprint

Table 1 SSM-iCON 250 features

Materials

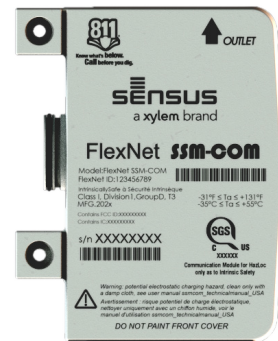
Part	Material
Body	Die cast aluminum ANSI/AA 384.0 with epoxy finishing for the meter case
Electronic enclosure	Plastic polycarbonate suitable for indoor, outdoor, or pit installation

Table 2 SSM-iCON 250 materials

(*) NOTE: The features indicated above refer to the standard models. Different features can be provided according to specific needs.

Sensus SSM-COM

Tailored to seamlessly integrate into the SSM-iCON 250 smart meter for functionality and aesthetics the **Sensus SSM-COM module** provides the full smart meter potential combined with a reliable low latency licensed network.



Features

Features	Values
Ambient temperature	from -35°C to 55°C from -30°F to 130°F
Ingress protection	Compliant to IP67 and NEMA 4X
Communication Network	Licensed
Frequency	RF 901-941 MHz Sensus AMI
Interface to SSM-iCOM 250 gas meter	Optical
Encryption	Meter to Comm module: symmetric key AES 128 Comm module to Head End system: AES 256

Table 3 Sensus SSM-COM features

Materials

Part	Material
Electronic enclosure	Plastic polycarbonate suitable for indoor, outdoor, or pit installation

Table 4 Sensus SSM-COM materials

NOTE: The features indicated above refer to the standard models. Different features can be provided according to specific needs.