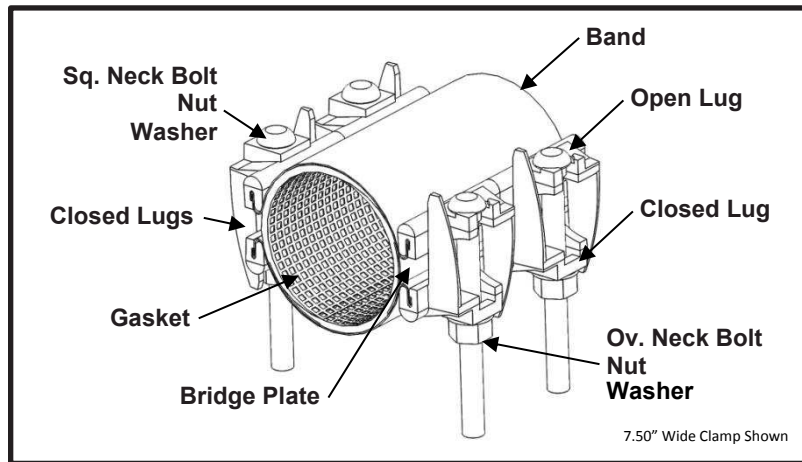


SPECIFICATION

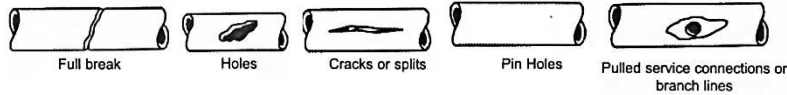
FULL CIRCLE[®] REPAIR CLAMP ALL STAINLESS

MODEL 259



APPLICATIONS

- **Typical Uses**
 - Repair leaks due to complete breaks, splits, or holes
 - Examples:



- **Standard Pipe Sizes**
 - 3" to 16" nominal
- **Standard Widths**
 - 7.5", 15.0", 22.5"
- **Type of Pipe**
 - Carbon Steel, Stainless Steel, Ductile Iron, Aluminum
- **Working Pressure**
 - 125 psi for 2"-12" nominal pipe sizes
 - 75 psi for 14"-16" nominal pipe sizes

MATERIALS

- **Band**
 - Type 304 Stainless Steel per ASTM A240
 - Band Thickness: 20 gauge
 - Hemmed ends for lug removal in tight applications
- **Lug**
 - Cast using Austenitic Stainless Steel GR. CF8 per ASTM A743 (304 equivalent)
 - Slot cast in lug to capture band hem
 - Designed for drop in replaceable bolts
 - One open loop lug and one closed loop lug. The bolts do not have to be removed to install clamp preventing lost hardware
 - Remaining opening(s) have closed-closed loop lugs securing clamp sections together for ease of installation
 - Long interlocking fingers allow for up to 0.80 inches of range (0.40 inches per side) in clamp
 - Interchangeable lugs allow combining smaller diameter clamps to create larger diameter clamps
 - Mutually supporting sliding fingers assures proper bolt alignment and permits maximum clamping without bending bolts



SPECIFICATION

FULL CIRCLE[®] REPAIR CLAMP ALL STAINLESS

MODEL 259

- **Gasket**
 - Nitrile (Buna-N) per ASTM D2000
 - Gasket Thickness: 0.218"
 - Compounded to resist oil, natural gas, acids, alkalies, most (aliphatic) hydrocarbon fluids, and many other chemicals
 - Temperature range: -20°F to +180°F
 - Full 360° gridded face gasket provides maximum pipe support, reinforcement, and sealing pressure
 - Tapered ends allow for full circumferential sealing
- **Bridge Plate**
 - Type 304 Stainless Steel quarter-hard per ASTM A240
 - Molded and recessed into gasket
 - Preformed for uniform distribution of gasket pressure over the entire pipe circumference
- **Bolt**
 - Type 304 Stainless Steel GR. 8 per ASTM A193
 - Epoxy coated threads to prevent galling
 - Size: 5/8"-11UNC x 6.88" long, Track Head Oval Neck (closed lug to open lug)
5/8"-11UNC x 6.88" long, Track Head Square Neck (closed lug to closed lug)
 - Rolled threads for improved physical characteristics, greater thread accuracy, and smooth surface finish
 - Drop in replaceable bolts
- **Nut**
 - Type 304 Stainless Steel GR. 8 per ASTM A194
 - Fluoropolymer coated to prevent galling
 - 5/8"-11UNC, Heavy Hex Semi-Finished
- **Washer**
 - Type 304 Stainless Steel per ASTM A240
 - 5/8" Type A Plain

LISTINGS

- Meets applicable D.O.T. Title 49 Section 192 regulations

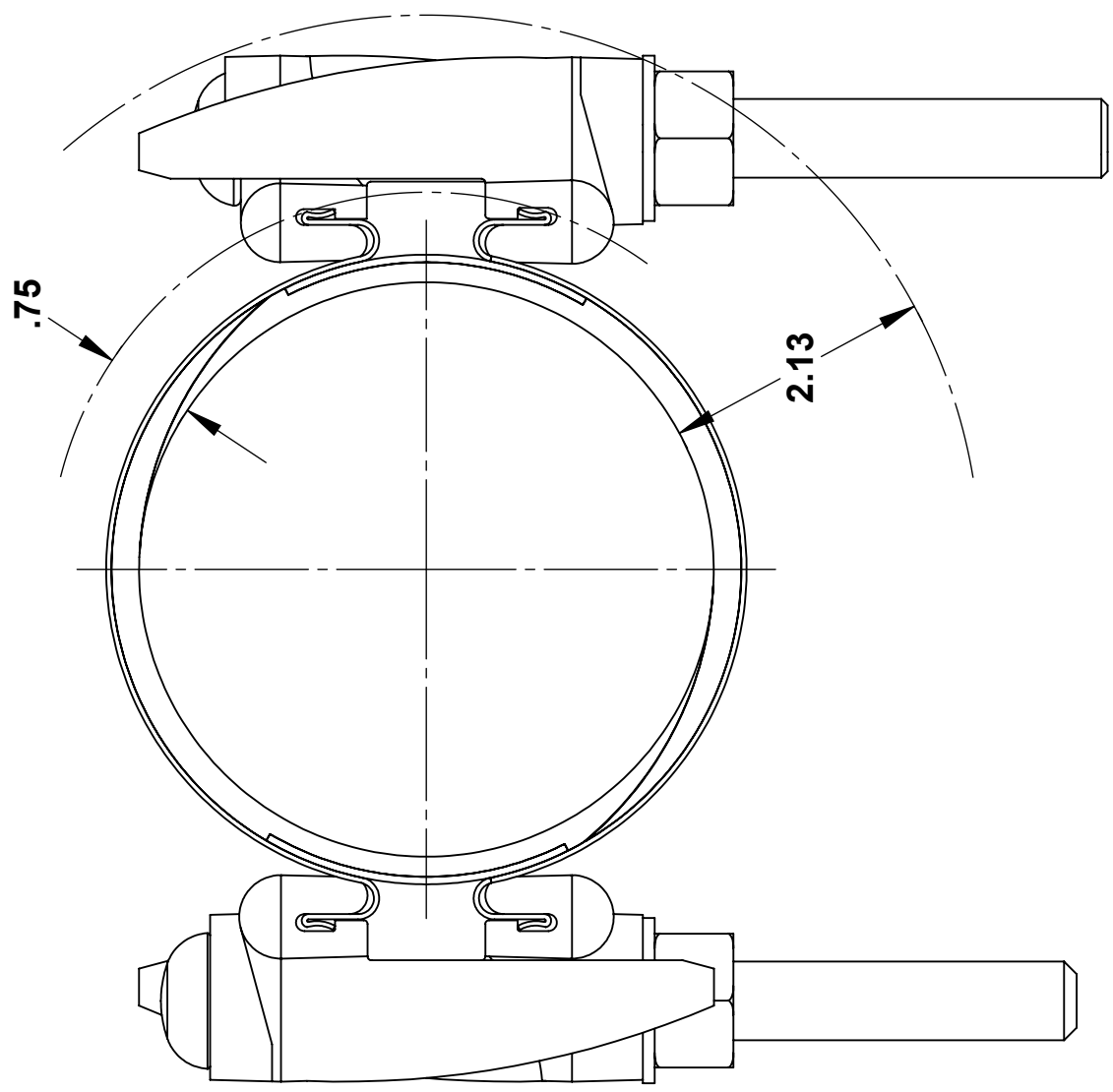
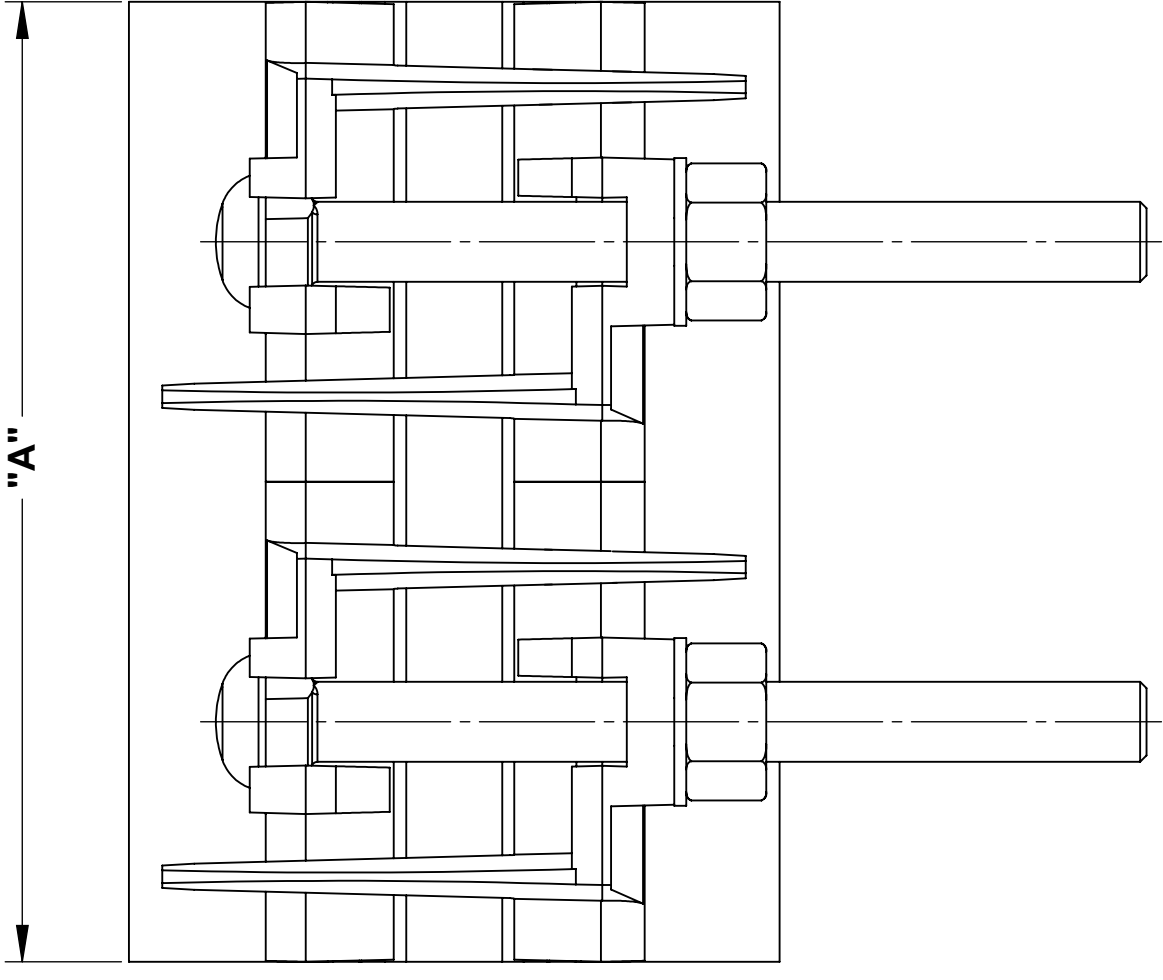
OPTIONS

- Type 316 Stainless Steel band
- Type 316 Stainless Steel hardware with fluoropolymer coated nuts to prevent galling
- Offset gaskets to allow for repairing longer cracks using multiple clamps
- Conductivity feature
- Clamps up to 30" wide

NOTES

- This product **does not** restrain the pipe from pulling out of the fitting
- Full Circle[®] is a registered trademark of Smith-Blair Inc.
- These product specifications were correct at the time of publication and are subject to change without notice
- See the Smith-Blair[®] web site for part numbers and ordering information
- See the Smith-Blair[®] web site for warranty information
- See the Smith-Blair[®] web site for corrosion warnings

30 Globe Ave, Texarkana, AR 71854
Ph: 870-773-5127 • Fax: 870-773-5212
Toll-Free Numbers: Ph: 800-643-9705 • Fax: 800-648-6792



NOTES:
 1. 7.50" WIDE CLAMP SHOWN OTHER SIZES SIMILAR

A	HARDWARE		SOCKET SIZE
	OVAL NECK QTY	SQUARE NECK QTY	
7.50	3	3	1-1/16"
15.00	6	6	
22.50	8	8	

TOLERANCES U.N.O. XX= ±.03 XXX= ±.015 FRACTIONS= 1/16 ANGLES= ±1° MACH. FIN=	NOTES: REMOVE BURRS AND SHARP EDGES DO NOT SCALE DWG.	APP'D	DATE
ALL DIMENSIONS ARE IN INCHES.	SCALE: N/A	CK'D	DATE
		DRN	DATE
TITLE		CHD	2/19/16
SPECIFICATION			
FULL CIRCLE® REPAIR CLAMP ALL STAINLESS			
MODEL 259			
P/N		N/A	
SMITH-BLAIR, Inc.		SPEC_259.DRW	
TEXARKANA, ARKANSAS		1 OF 1 SHEET	
		2/19/16 REV.	