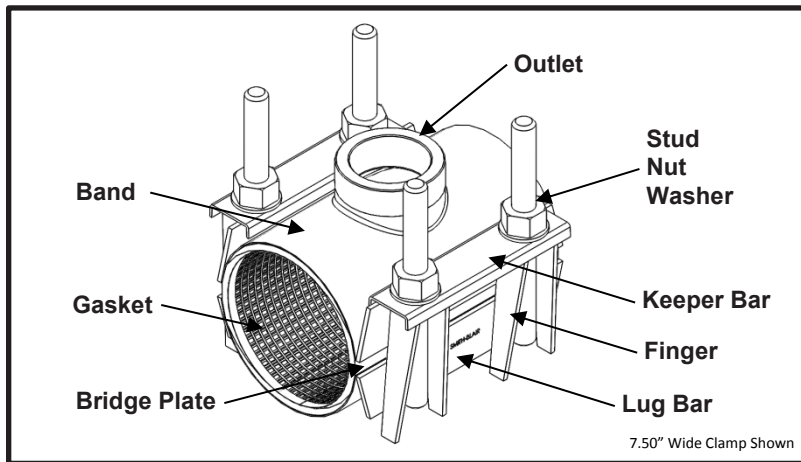




Smith-Blair  
a xylem brand

# SPECIFICATION

## FULL CIRCLE<sup>®</sup> TAPPED REPAIR CLAMP ALL STAINLESS MODEL 265

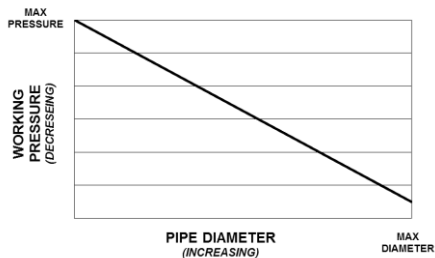


**Do not tap through this product!!!**  
**Only use for repair or installations where the pipe is drilled prior to installation.**

### APPLICATIONS

- **Typical Uses**
  - Repair leaks at broken or torn out service connections or branch lines
  - For tapping use on installations where the pipe is drilled prior to installation
- **Standard Pipe Sizes**
  - 4" to 12" nominal
- **Standard Taps**
  - NPT: 1/2", 3/4", 1", 1-1/4", 1-1/2", 2"
  - CC/AWWA: 1/2", 3/4", 5/8", 1", 1-1/4", 1-1/2", 2"
  - BSP: 1/2", 3/4", 1", 1-1/4", 1-1/2", 2"

*See Smith-Blair catalog for available pipe diameter and tap size combinations as some combinations are not available*
- **Standard Widths**
  - 7.5", 10", 12.5", 15"
- **Type of Pipe**
  - Carbon Steel, Stainless Steel, Ductile Iron, PVC, HDPE DR17 or thicker (with use of spring washers), Asbestos Cement, Copper, Aluminum
- **Working Pressure**
  - Up to 175 psi depending on **pipe size**, type of pipe, type of repair, service conditions, and installation workmanship





Smith-Blair  
a xylem brand

# SPECIFICATION

## FULL CIRCLE<sup>®</sup> TAPPED REPAIR CLAMP ALL STAINLESS

### MODEL 265

---

#### MATERIALS

- **Band**
  - Type 304 Stainless Steel per ASTM A240
  - Band Thickness: 20 gauge thick for clamps 7.64" diameter and smaller  
19 gauge thick for clamps 8.99" diameter and larger
- **Finger**
  - Type 304 Stainless Steel per ASTM A240 Solution Annealed
  - Finger Thickness: 10 gauge
- **Lug Bar**
  - Type 304 Stainless Steel per ASTM A240 Solution Annealed
  - Lug Bar Thickness: 10 gauge
- **Keeper Bar**
  - Type 304 Stainless Steel per ASTM A240 Solution Annealed
  - Keeper Bar Thickness: 14 gauge
- **Gasket**
  - Nitrile (Buna-N) per ASTM D2000
  - Gasket Thickness: 0.250" thickness for clamps 10.75"-11.55" diameter range and smaller  
0.218" thickness for clamps 11.10"-11.90" diameter range and larger
  - Compounded to resist water, oil, natural gas, acids, alkalies, most (aliphatic) hydrocarbon fluids and many other chemicals
  - Temperature range: -20°F to +180°F
  - Full 360° gridded face gasket with tapered ends
- **Bridge Plate**
  - Type 304 Stainless Steel quarter-hard per ASTM A240
  - Molded and recessed into gasket
- **Outlet**
  - Type 304 Stainless Steel per ASTM A276
- **Stud**
  - Type 304 Stainless Steel per ASTM A276
  - Epoxy coated threads
  - 5/8"-11UNC x 7.00" long, Stud with Rolled Threads
- **Nut**
  - Type 304 Stainless Steel GR. 8 per ASTM A194
  - Fluoropolymer coated
  - 5/8"-11UNC, Heavy Hex Semi-Finished
- **Washer**
  - Type 304 Stainless Steel per ASTM A240
  - 5/8" Type A Plain
- **Welding**
  - Welds accomplished using qualified welders
  - GMAW and GTAW weld process utilized
  - Welds passivated to preserve corrosion resistance

#### LISTINGS

- Certified to NSF/ANSI 61 and NSF/ANSI 372
- Meets applicable portions of AWWA C230



Smith-Blair  
a xylem brand

# SPECIFICATION

## FULL CIRCLE<sup>®</sup> TAPPED REPAIR CLAMP ALL STAINLESS

### MODEL 265

---

#### OPTIONS

- Type 316 Stainless Steel band
- Type 316 Stainless Steel hardware with fluoropolymer coated nuts to prevent galling
- Alternative gasket material (e.g. Viton, EPDM, etc.)
- Spring washers for use of clamp on HDPE pipe
- Offset gaskets to allow for repairing longer cracks using multiple clamps
- Conductivity feature
- Clamps up to 30" wide

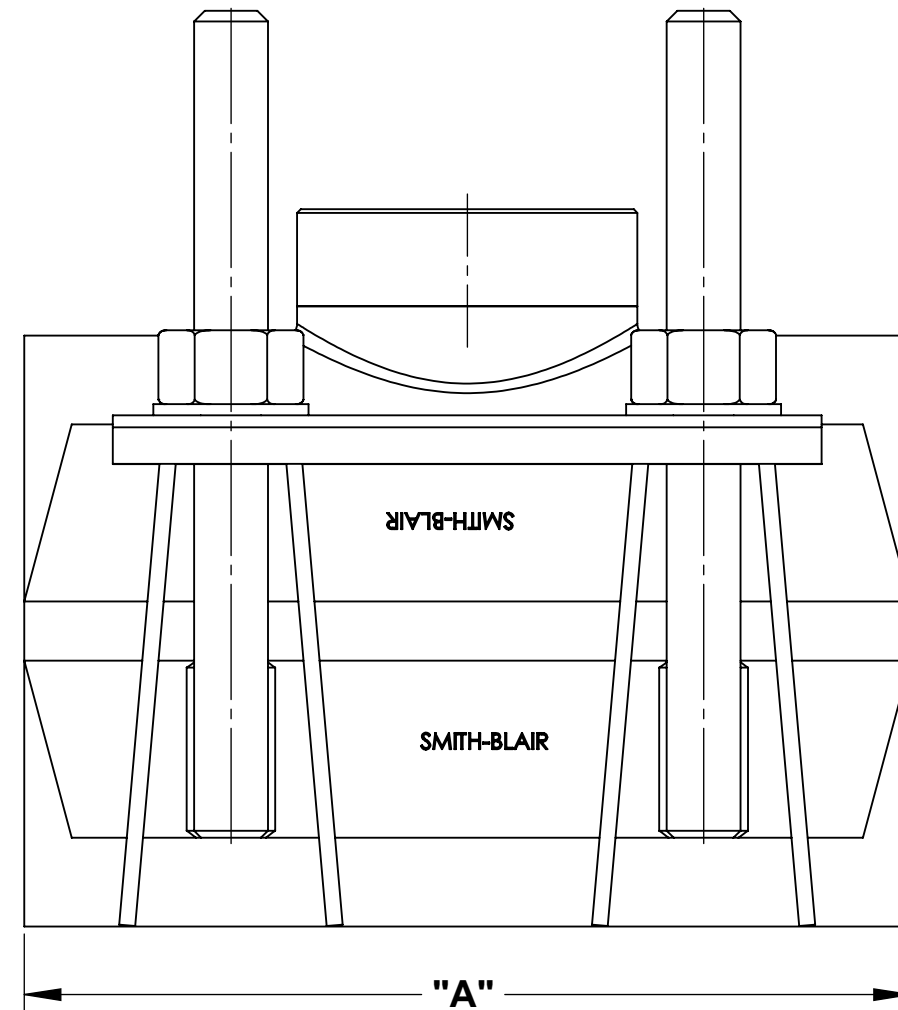
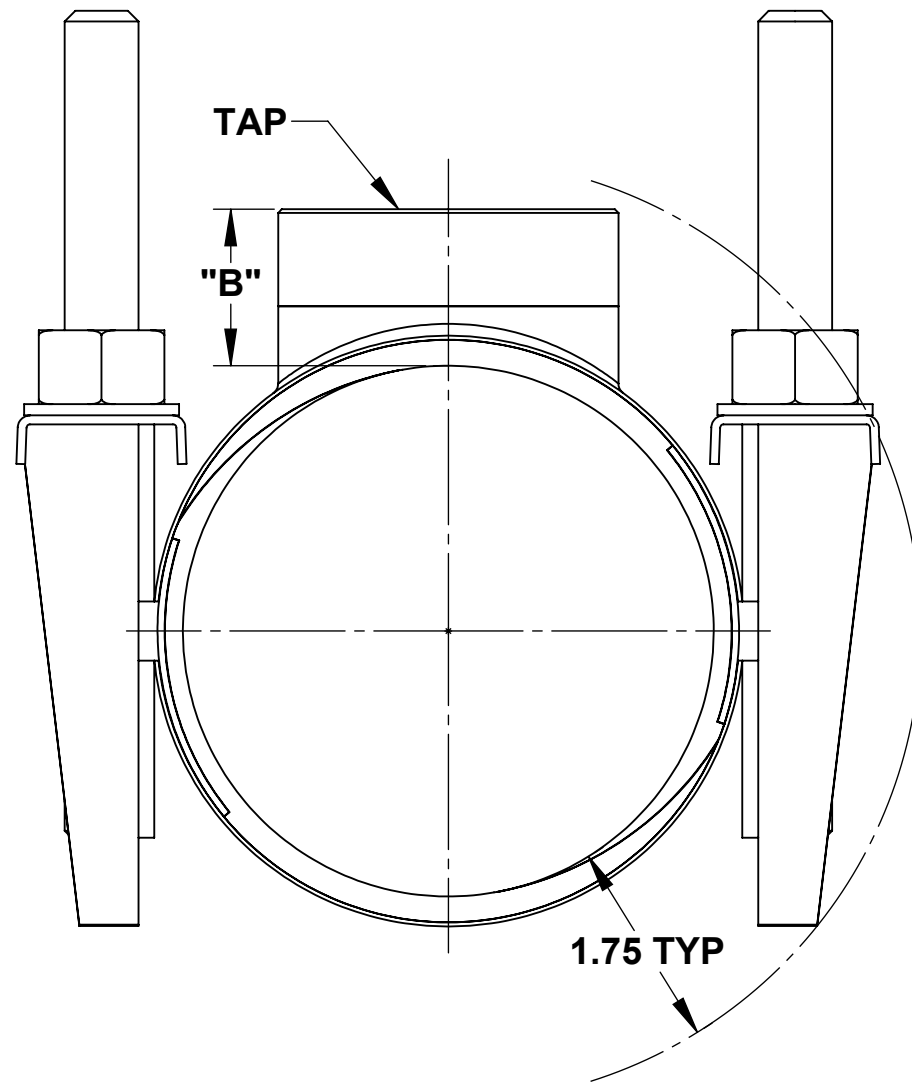
#### NOTES

- Spring washers **are required** when this product is used on DR17 or thicker HDPE pipe. (Not recommended for use on HDPE pipe DR 17 or thinner)
- Xylem, Smith-Blair, SB stylized, and Full Circle are registered trademarks of Xylem, Inc., or one of its subsidiaries.
- These product specifications were correct at the time of publication and are subject to change without notice
- See the Smith-Blair website for part numbers and ordering information
- See the Smith-Blair website for warranty information
- See the Smith-Blair website for corrosion notice



THIS PRODUCT DOES NOT RESTRAIN PIPE MOVEMENT. Proper anchoring is required to prevent pipe pullout. Failure to anchor or improper anchoring can result in dangerous pipe content escape, property damage, serious injury, or death. Read the product installation instructions prior to installing this product.

30 Globe Ave, Texarkana, AR 71854  
Ph: 870-773-5127 • Fax: 870-773-5212  
Toll-Free Numbers: Ph: 800-643-9705 • Fax: 800-648-6792



- NOTES:**
1. SEE SMITH-BLAIR CATALOG FOR AVAILABLE PIPE DIAMETER AND TAP SIZE COMBINATIONS AS SOME COMBINATIONS ARE NOT AVAILABLE.
  2. 7.50" WIDE CLAMP SHOWN OTHER SIZES SIMILAR.

A	KEEPER BAR		HARDWARE			SOCKET SIZE
	QUANTITY	SIZE	QUANTITY	STUD SIZE	WASHER SIZE	
7.50	2	6.00	4	5/8" X 7.00"	5/8"	1-1/16"
10.00	2	8.00	6			
12.50	2	10.00	6			
15.00	4	6.00	8			

TAP CHART				
B	SIZE	NPT	CC	BSP
1.30	1/2"	03	04	59
	5/8"	-	05	-
	3/4"	06	07	50
	1"	08	09	51
1.50	1-1/4"	10	11	54
	1-1/2"	12	13	52
	2"	14	-	53

TOLERANCES U.N.O. .XX= ±.03 .XXX= ±.015 FRACTIONS= ANGLES=±1° MACH. FIN=	NOTES: REMOVE BURRS AND SHARP EDGES DO NOT SCALE DWG.	APP'D	DATE
	SCALE: N/A	CK'D	DATE
ALL DIMENSIONS ARE IN INCHES.	DRN	CHD	DATE 2/19/16
TITLE		<b>SPECIFICATION</b>	
FULL CIRCLE® TAPPED REPAIR CLAMP ALL STAINLESS		MODEL 265	
SMITH-BLAIR TEXARKANA, ARKANSAS		P/N N/A	
DWG. NO. SPEC_265.DRW		4 OF 4 SHEET 9/5/17 REV.	