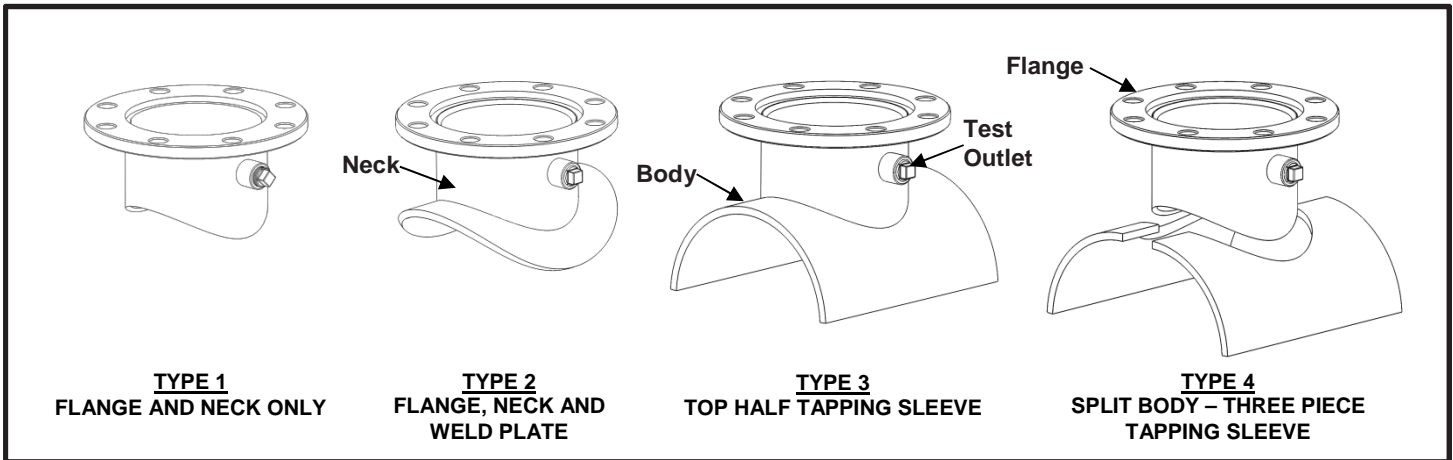


SPECIFICATION

TAPPING SLEEVE – FABRICATED WELD-ON MODEL 626



APPLICATIONS

- **Typical Uses**
 - Tapping size-on-size branch connections on new or existing pipe
 - Tapping reducing branch connections on new or existing pipe
 - Installing valves and other miscellaneous service equipment
- **Standard Pipe Sizes**
 - 3" nominal and up
- **Outlet Type and Size**
 - 4" to 12"
- **Type of Pipe**
 - Carbon Steel, Stainless Steel
- **Working Pressure**
 - 150 psi depending on the type of flange, pipe diameter, service conditions, and installation workmanship

MATERIALS

- **Body**
 - Carbon Steel per ASTM A283 Grade C
 - Material thickness: 0.375"
 - Contoured to pipe O.D. for maximum pipe engagement and reinforcement
- **Neck**
 - Carbon Steel per ASTM A53 or A513
 - Material thickness: 4" = 0.188"
6"-12" = 0.25"
 - Furnished with 3/4" NPT test outlet
 - Accepts full size cutters except size-on-size taps which require a 1/2" undersize shell cutter
- **Flange**
 - Carbon Steel per ASTM A36
 - Type AWWA C207 Class D steel ring flat face
 - Compatible with ANSI 125# and 150# bolt hole patterns
 - Recessed for tapping valve alignment per MSS SP-60



Smith-Blair
a xylem brand

SPECIFICATION

TAPPING SLEEVE – FABRICATED WELD-ON

MODEL 626

- **Test Outlet**
 - Carbon Steel 3/4" FNPT 3000# half coupling per ASTM A865
 - Carbon Steel 3/4" MNPT square head test plug
- **Welding**
 - Welds accomplished using qualified welders
 - GMAW weld process utilized
- **Finish**
 - Flexi-Coat[®] fusion bonded epoxy
 - Meets application methods AWWA C213

LISTINGS

- Meets applicable AWWA C223 standards

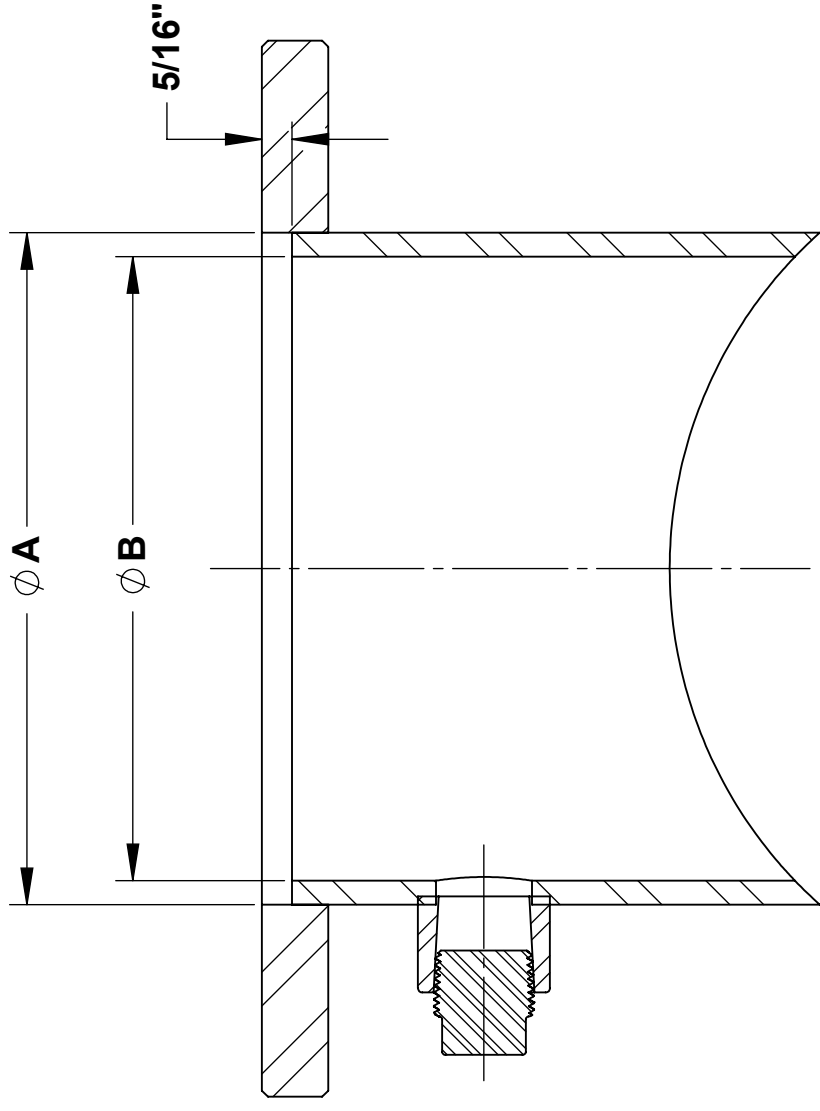
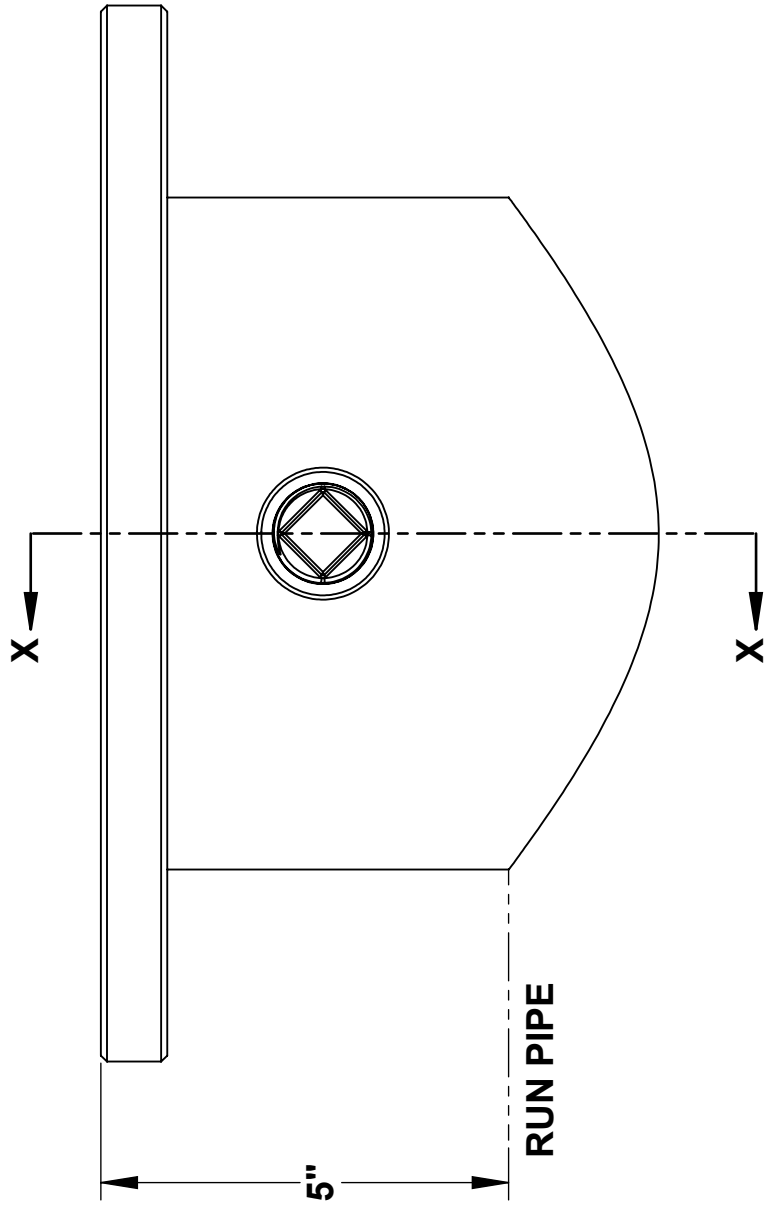
OPTIONS

- Type 304 Stainless Steel tapping sleeve construction
- Angled (Wye) pattern configuration
- Anode connector
- Threaded outlet 3/4" to 6" NPT
- MJ outlet
- Linestop outlet
- Coupling outlet (4")
- Any industry standard flange
- Higher working pressure design
- Larger diameter body and/or outlet

NOTES

- These product specifications were correct at the time of publication and are subject to change without notice
- Flexi-Coat[®] is a registered trademark of Smith-Blair, Inc.
- See the Smith-Blair[®] web site for part numbers and ordering information
- See the Smith-Blair[®] web site for warranty information
- See the Smith-Blair[®] web site for corrosion warnings

30 Globe Ave, Texarkana, AR 71854
Ph: 870-773-5127 • Fax: 870-773-5212
Toll-Free Numbers: Ph: 800-643-9705 • Fax: 800-648-6792



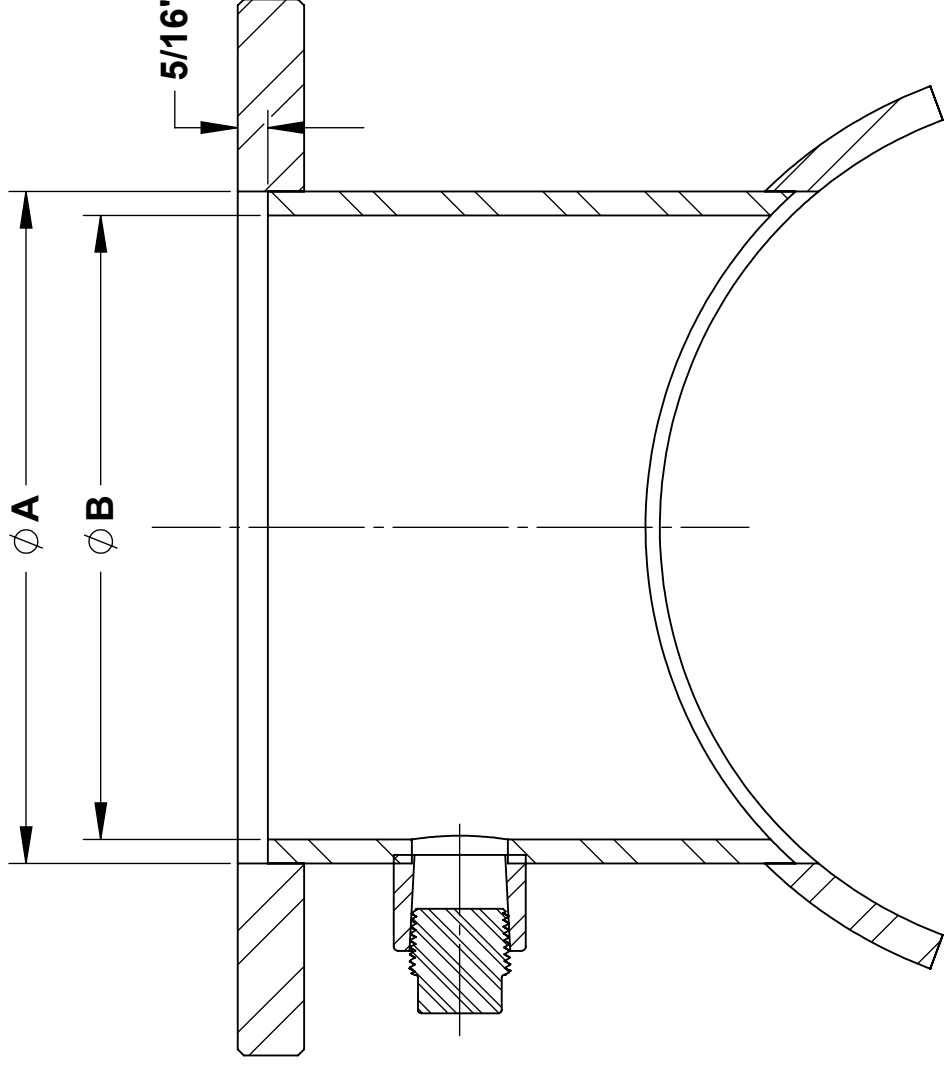
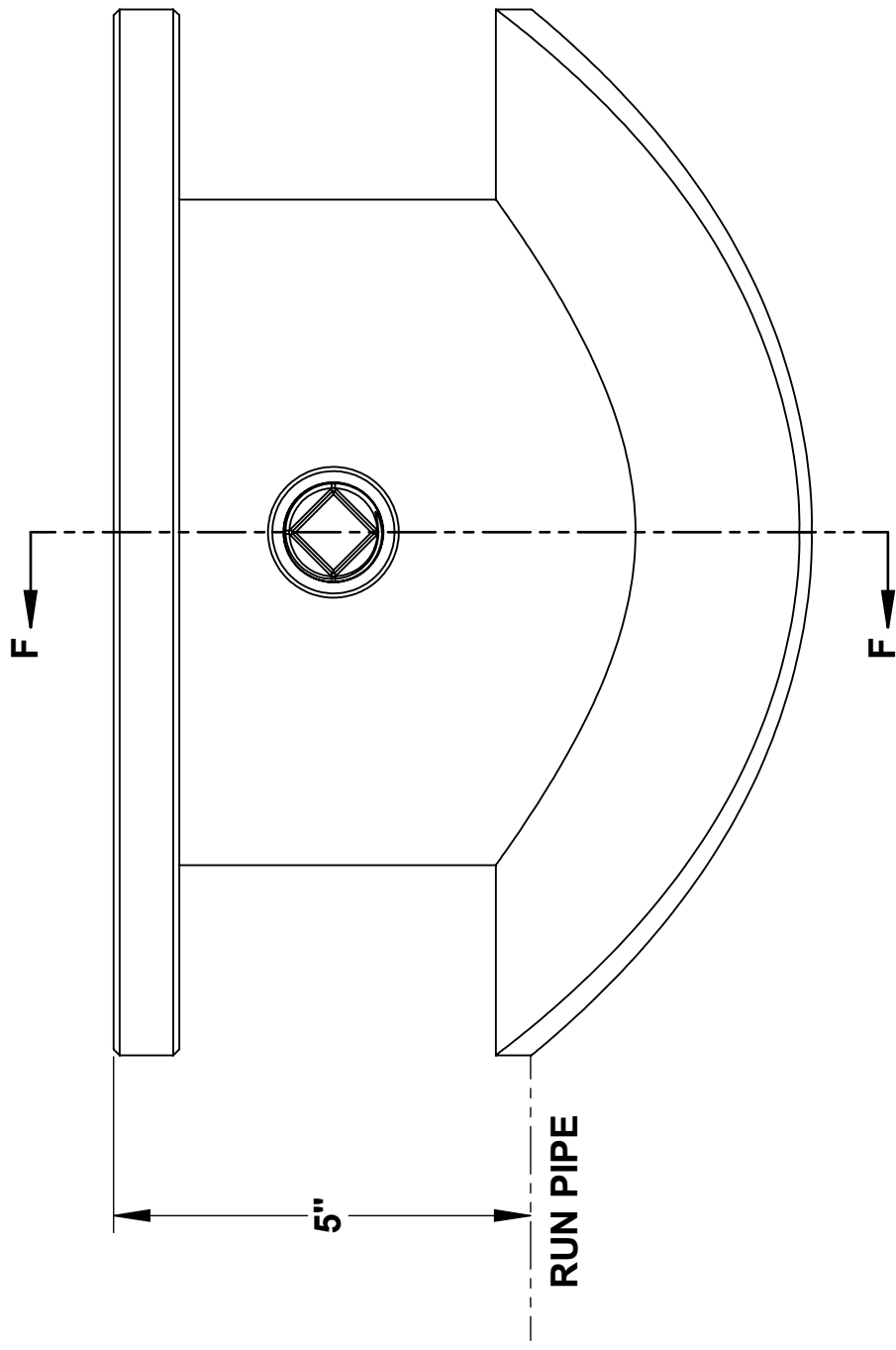
SECTION X-X

**TYPE-1
FLANGE AND NECK ONLY**

OUTLET SIZE	NOMINAL PIPE SIZE	MSS SP-60 RECESS		APPROX. WT. (LB)
		A	B	
4	4	5.06	4.03	10
	6-30		4.59	
6	6-30	7.06	6.13	15
			6.50	
8	8-30	9.06	8.50	22
			8.50	
10	10-30	11.09	10.25	29
			10.50	
12	12-30	13.09	12.25	45
			12.50	

- NOTES:**
 1. SEE SMITH-BLAIR CATALOG FOR SIZES NOT SHOWN
 2. 8" X 6" TYPE-1 TAPPING SLEEVE SHOWN OTHER SIZES SIMILAR

TOLERANCES U.N.O. XX= ±.03 XXX= ±.015 FRACTIONS= ±.01 ANGLES= ±1° MACH. FIN=	NOTES: REMOVE BURRS AND SHARP EDGES DO NOT SCALE DWG.	APP'D	DATE
	SCALE: N/A	CK'D	DATE
	ALL DIMENSIONS ARE IN INCHES.	DRN	CHD
TITLE			
SPECIFICATION			
TAPPING SLEEVE - FABRICATED WELD-ON			
MODEL 626			
P/N		N/A	
SMITH-BLAIR, Inc.		SPEC_626.DRW	
TEXARKANA, ARKANSAS		1 OF 4 SHEET	
		7/30/15	
		3/16/16 REV.	



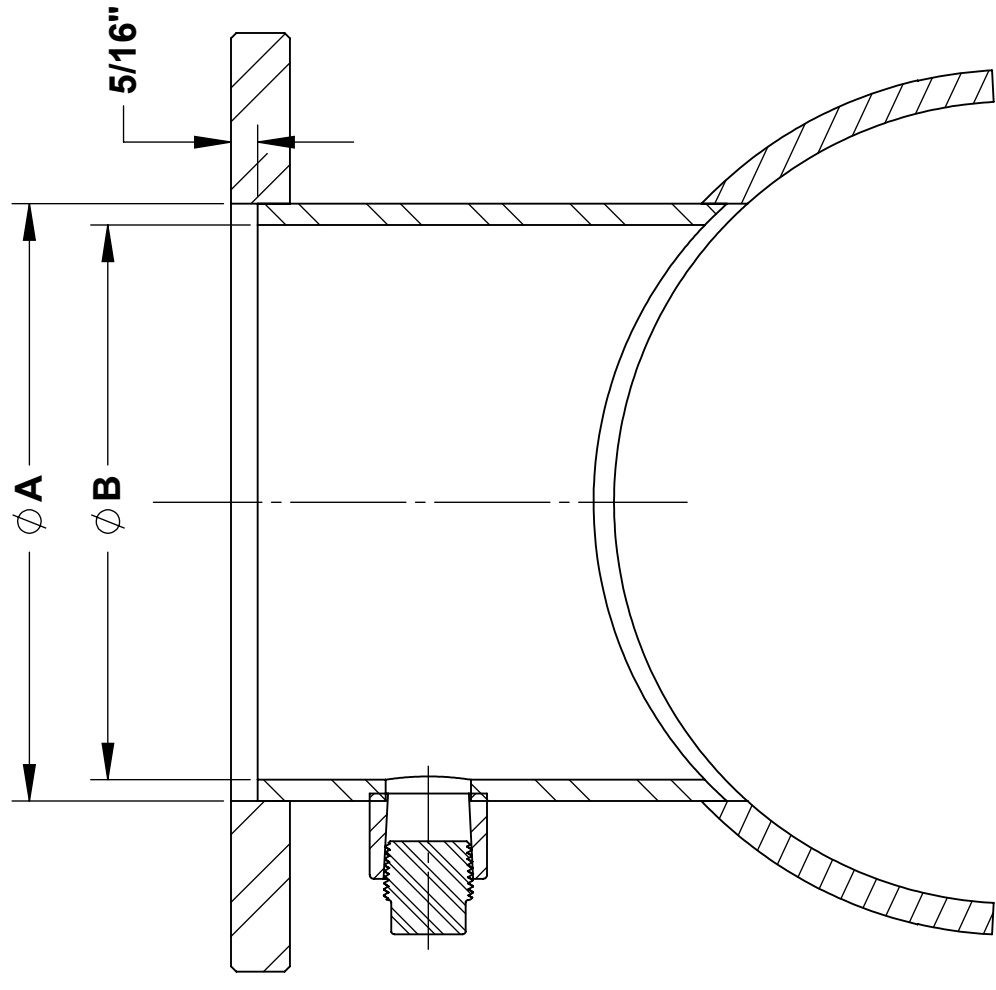
SECTION F-F

**TYPE-2
FLANGE, NECK AND WELD PLATE**

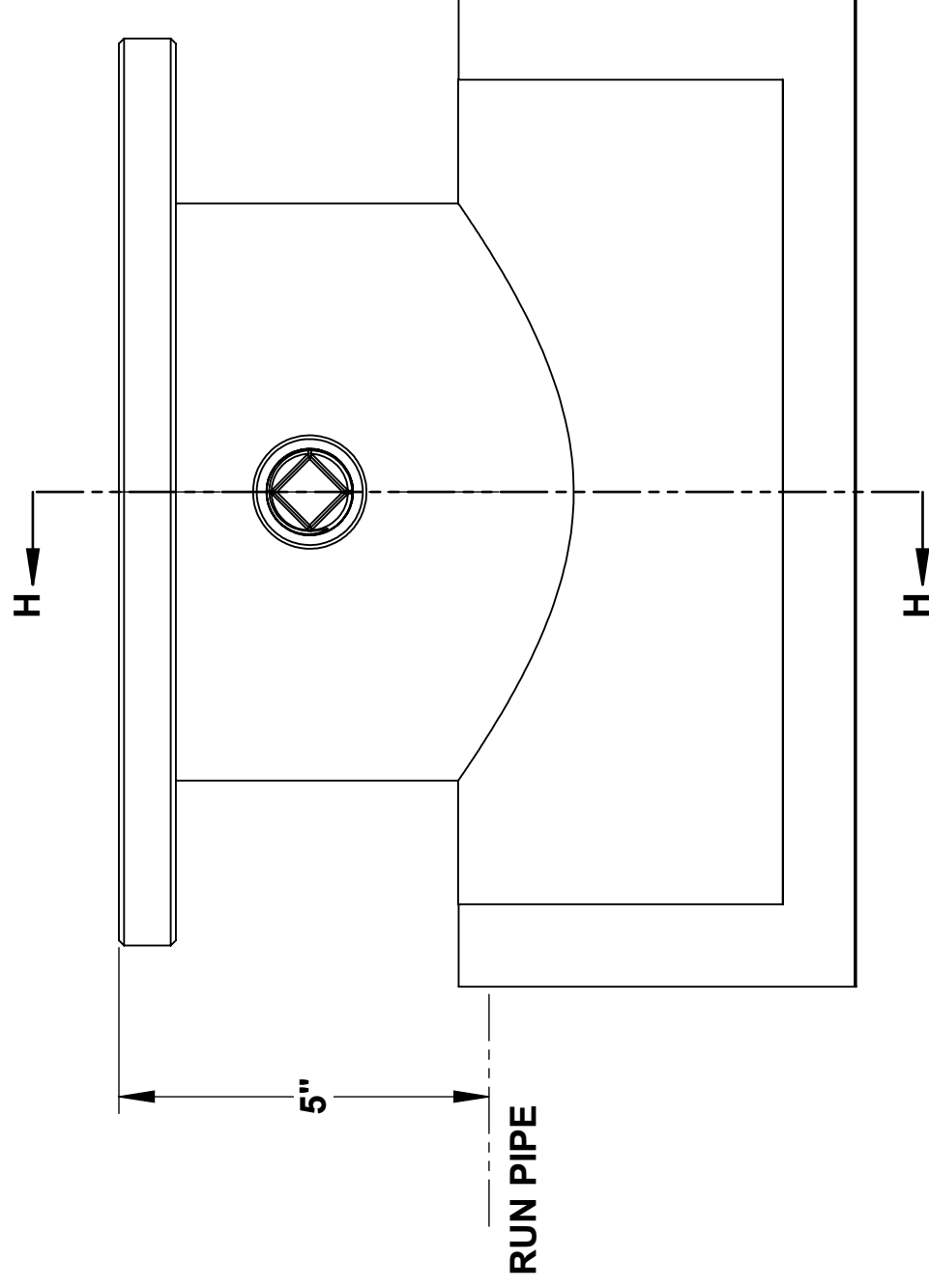
OUTLET SIZE	NOMINAL PIPE SIZE	MSS SP-60 RECESS	
		A	B
4	4	5.06	4.03
	6-30		4.59
6	6	7.06	6.13
	8-30		6.50
8	8	9.06	8.50
	10-30		8.50
10	10	11.09	10.25
	12-30		10.50
12	12	13.09	12.25
	14-30		12.50

- NOTES:**
 1. SEE SMITH-BLAIR CATALOG FOR SIZES NOT SHOWN
 2. 8" X 6" TYPE-2 TAPPING SLEEVE SHOWN OTHER SIZES SIMILAR

TOLERANCES U.N.O. XX= ±.03 XXX= ±.015 FRACTIONS= ±.1* ANGLES= ±1° MACH. FIN=	NOTES: REMOVE BURRS AND SHARP EDGES DO NOT SCALE DWG.	APP'D	DATE
	SCALE: N/A	CK'D	DATE
	ALL DIMENSIONS ARE IN INCHES.	DRN	CHD
TITLE			
SPECIFICATION			
TAPPING SLEEVE - FABRICATED WELD-ON			
MODEL 626			
P/N		N/A	
SMITH-BLAIR, Inc.		SPEC_626.DRW	
TEXARKANA, ARKANSAS		2 OF 4 SHEET	
		7/30/15	
		REV.	
		3/16/16	



SECTION H-H

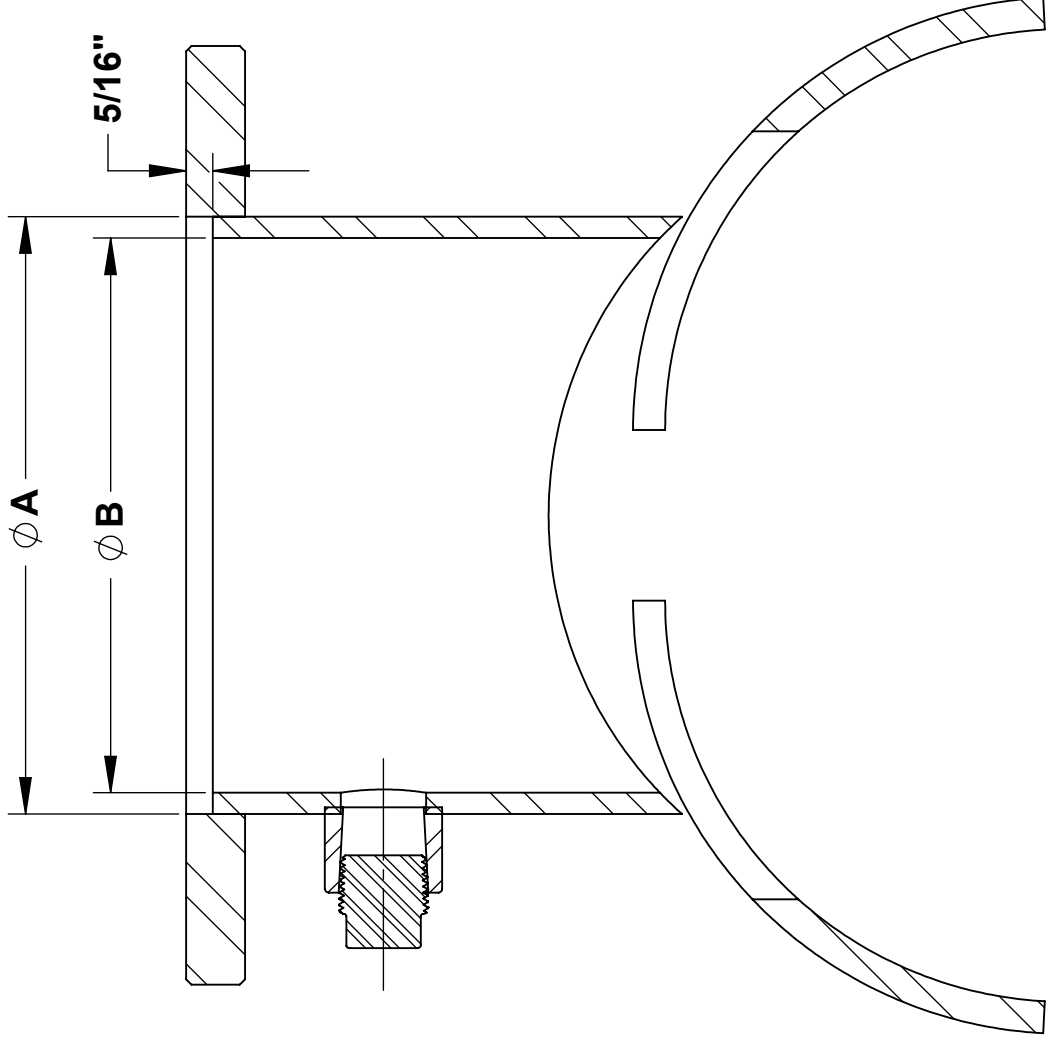
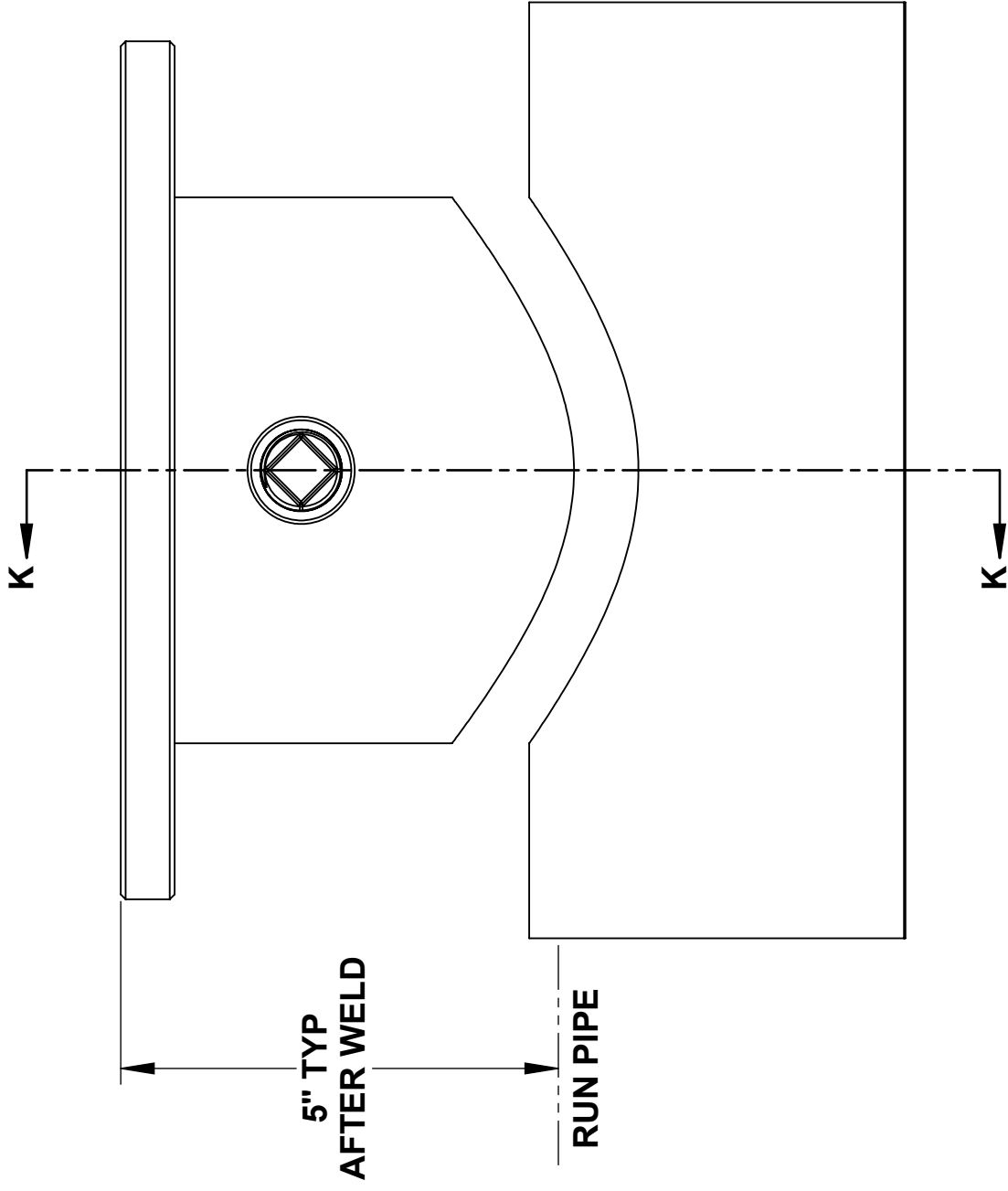


**TYPE-3
TOP HALF TAPPING SLEEVE**

OUTLET SIZE	NOMINAL PIPE SIZE	MSS SP-60 RECESS	
		A	B
4	4	5.06	4.03
	6-30		4.59
6	6	7.06	6.13
	8-30		6.50
8	8	9.06	8.50
	10-30		8.50
10	10	11.09	10.25
	12-30		10.50
12	12	13.09	12.25
	14-30		12.50

- NOTES:**
 1. SEE SMITH-BLAIR CATALOG FOR SIZES NOT SHOWN
 2. 8" X 6" TYPE-3 TAPPING SLEEVE SHOWN OTHER SIZES SIMILAR

TOLERANCES U.N.O. XX= ±.03 XXX= ±.015 FRACTIONS= ±.015 ANGLES= ±1° MACH. FIN=	NOTES: REMOVE BURRS AND SHARP EDGES DO NOT SCALE DWG.	APP'D	DATE
ALL DIMENSIONS ARE IN INCHES.	SCALE: N/A	CK'D	DATE
		DRN	DATE
		CHD	DATE
			7/30/15
TITLE			
SPECIFICATION			
TAPPING SLEEVE - FABRICATED WELD-ON			
MODEL 626			
P/N		N/A	
SMITH-BLAIR, Inc.		SPEC_626.DRW	
TEXARKANA, ARKANSAS		3 OF 4 SHEET	
		3/16/16 REV.	



SECTION K-K

**TYPE-4
SPLIT BODY - TOP HALF TAPPING SLEEVE**

OUTLET SIZE	NOMINAL PIPE SIZE	MSS SP-60 RECESS	
		A	B
4	4	5.06	4.03
	6-30		4.59
6	6	7.06	6.13
	8-30		6.50
8	8	9.06	8.50
	10-30		8.50
10	10	11.09	10.25
	12-30		10.50
12	12	13.09	12.25
	14-30		12.50

- NOTES:**
 1. SEE SMITH-BLAIR CATALOG FOR SIZES NOT SHOWN
 2. 8" X 6" TYPE-4 TAPPING SLEEVE SHOWN OTHER SIZES SIMILAR

TOLERANCES U.N.O. XX= ±.03 XXX= ±.015 FRACTIONS= ±.1* ANGLES= ±1* MACH. FIN=	NOTES: REMOVE BURRS AND SHARP EDGES DO NOT SCALE DWG.	APP'D	DATE
ALL DIMENSIONS ARE IN INCHES.	SCALE: N/A	CK'D	DATE
		DRN	DATE
		CHD	DATE
TITLE			
SPECIFICATION			
TAPPING SLEEVE - FABRICATED WELD-ON			
MODEL 626			
P/N		N/A	
SMITH-BLAIR, Inc.		SPEC_626.DRW	
TEXARKANA, ARKANSAS		4 OF 4 SHEET	
		7/30/15	
		3/16/16 REV.	