

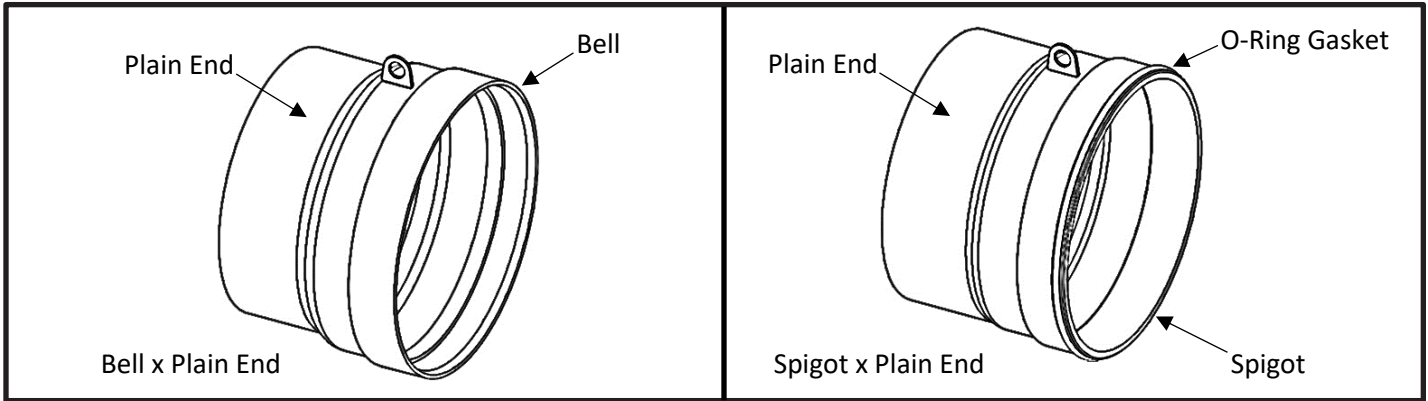


Smith-Blair  
a xylem brand

# SPECIFICATION

## FABRICATED CPP ADAPTER

### MODELS 935 & 936



#### APPLICATIONS

- **Typical Uses**
  - Making a gasketed and/or welded connection to a CPP (Concrete Pressure Pipe) Bell/Spigot
- **CPP Sizes**
  - 18.5" to 65" Bell I.D.
- **Type of CPP**
  - Reinforced Concrete Pressure Pipe, Steel-Cylinder Type (AWWA C300)
  - Prestressed Concrete Pressure Pipe, Steel-Cylinder Type (AWWA C301)
    - Lined-Cylinder Pipe (LCP)
    - Embedded-Cylinder Pipe (ECP)
  - Reinforced Concrete Pressure Pipe, Non-cylinder Type (AWWA C302)
  - Concrete Pressure Pipe, Bar-Wrapped, Steel-Cylinder Type (AWWA C303)
- **Type of Adapter (24" weldment)**
  - Bell/Spigot x Plain End
  - Bell/Spigot x Coupling (*see 411 Specification*)
  - Bell/Spigot x MJ Flange per AWWA C111
  - Bell/Spigot x Ring Flange per AWWA C207
  - Bell/Spigot x Cam-Lock (*see 111/120 Specification*)
- **Working Pressure**
  - Based on application
  - Up to 250 psi

#### MATERIALS

- **Bell**
  - Carbon Steel per ASTM A36
  - Fabricated to match customer's Bell I.D.
- **Spigot**
  - Carbon Steel per ASTM A36
  - Designed for customer's Bell I.D.
- **Spigot O-Ring Gasket**
  - 3/4" diameter Nitrile (Buna-N) per ASTM D2000
  - Vulcanized bond



Smith-Blair  
a xylem brand

# SPECIFICATION FABRICATED CPP ADAPTER MODELS 935 & 936

- **Body**
  - Carbon Steel per ASTM A36 or ASTM A283 Grade C, or Carbon Steel having a minimum yield of 30,000 psi
- **2" Hang Plate**
  - Carbon Steel per ASTM A283 Grade C
- **Finish**
  - Flexi-Coat® fusion bonded epoxy
  - Weld-on adapters furnished with shop coat on weld surfaces
  - *Some applications will require liquid epoxy per AWWA C210*

## LISTINGS/STANDARDS

- Certified to NSF/ANSI 61 and NSF/ANSI 372
- Flexi-Coat® fusion bonded epoxy finish meets requirements of AWWA C213

## OPTIONS

- Custom adapter length
- Weld-on Spigot with no gasket groove
- M11 Harness for Bell/Spigot x Plain End adapter
- Plain End beveled and/or shop coated for butt welding
- Bell/Spigot x MJ Flange adapter for use with studs
- Other flange types

## NOTES

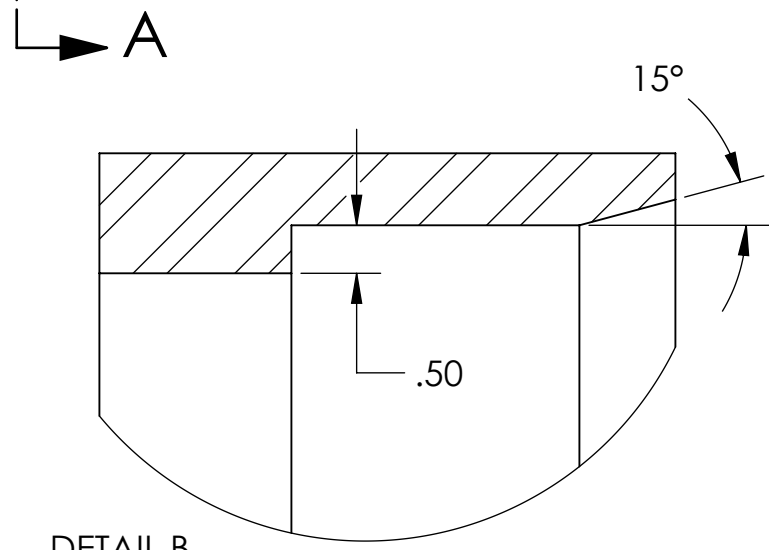
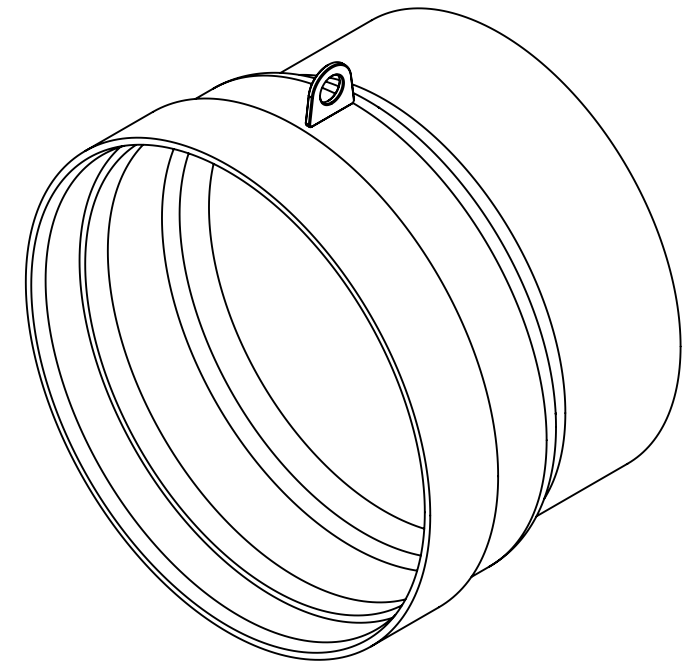
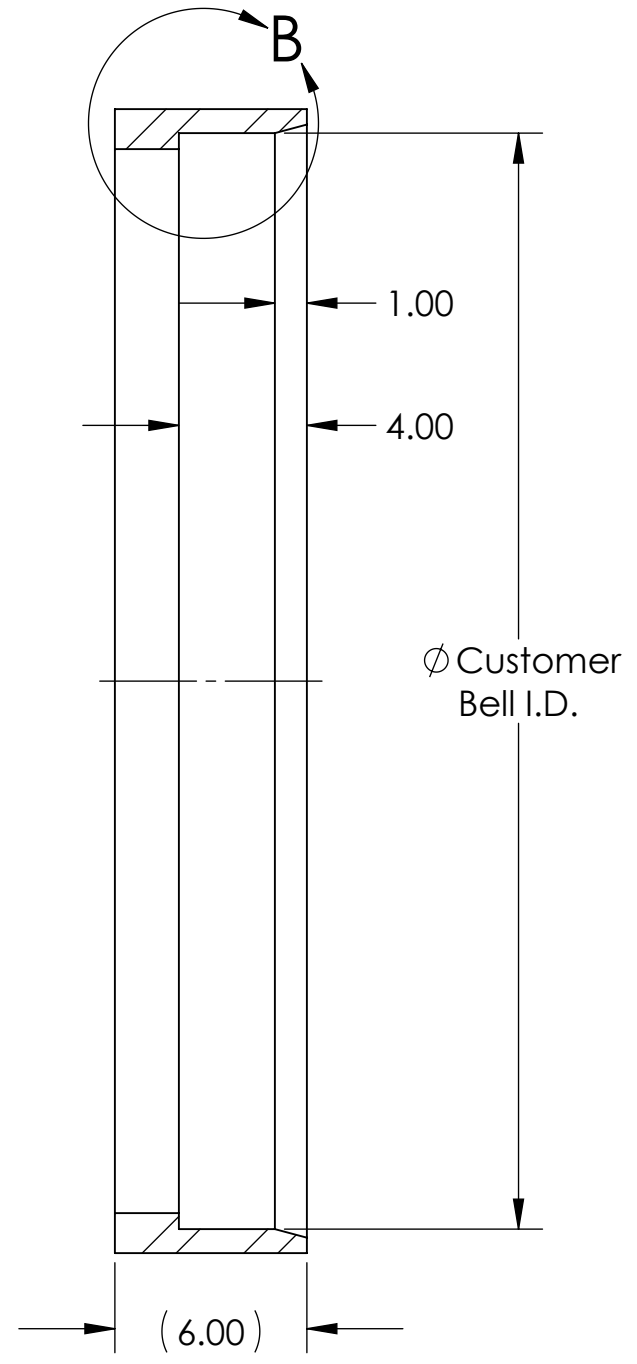
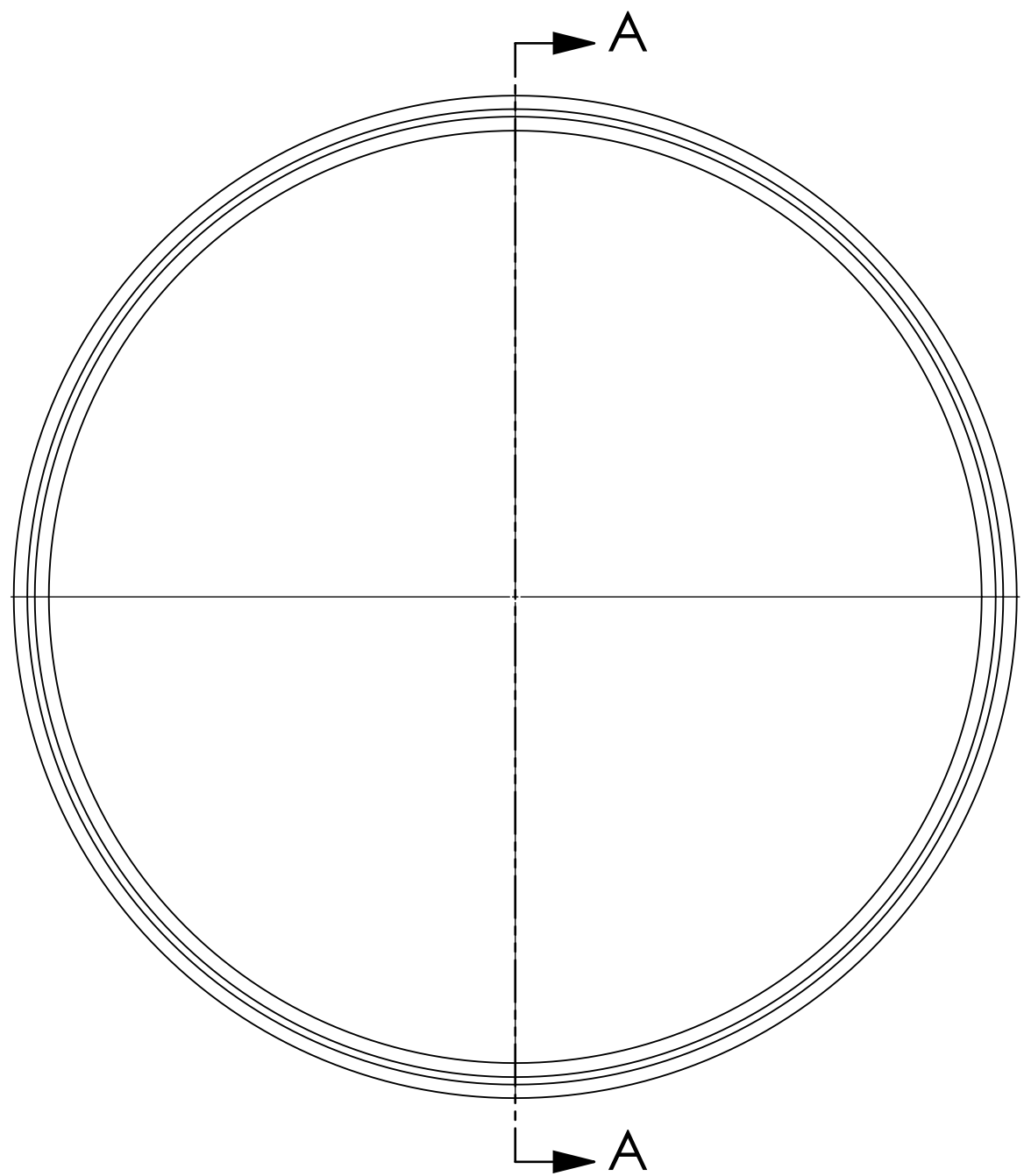
- Xylem, Smith-Blair, SB stylized, and Flexi-Coat are registered trademarks of Xylem Inc. or one of its subsidiaries.
- These product specifications were correct at the time of publication and are subject to change without notice
- See the Smith-Blair website for part numbers and ordering information
- See the Smith-Blair website for warranty information
- See the Smith-Blair website for corrosion notice



**IMPROPER INSTALLATION CAN RESULT IN PRODUCT FAILURE.**  
Failure to follow proper installation procedures can result in dangerous pipe content escape, property damage, serious injury, and/or death. Read the product installation instructions prior to installing this product.

30 Globe Ave, Texarkana, AR 71854  
Ph: 870-773-5127 • Fax: 870-773-5212  
Toll-Free Numbers: Ph: 800-643-9705 • Fax: 800-648-6792

REV.	BY	DATE	DESCRIPTION
------	----	------	-------------



Notes:

1. Fabricated steel bell detailed
2. Bell x Plain End CPP Adapter shown above
3. See appropriate specification sheet for adapter end details

TOLERANCES U.N.O. .XX= ±.05 .XXX= ±.010 ANGLES= ±1° MACH. FIN=V125 FRACTIONS=1/16 ALL DIMENSIONS ARE IN INCHES	NOTES U.N.O. REMOVE BURRS. REMOVE SHARP EDGES. DO NOT SCALE DWG.	APP'D	DATE
		CK'D	DATE
	TSK NO.	DRN	IKD
			DATE

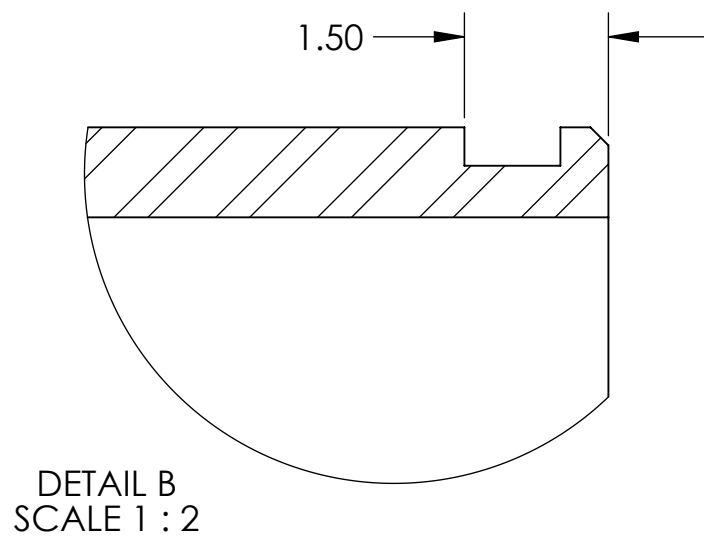
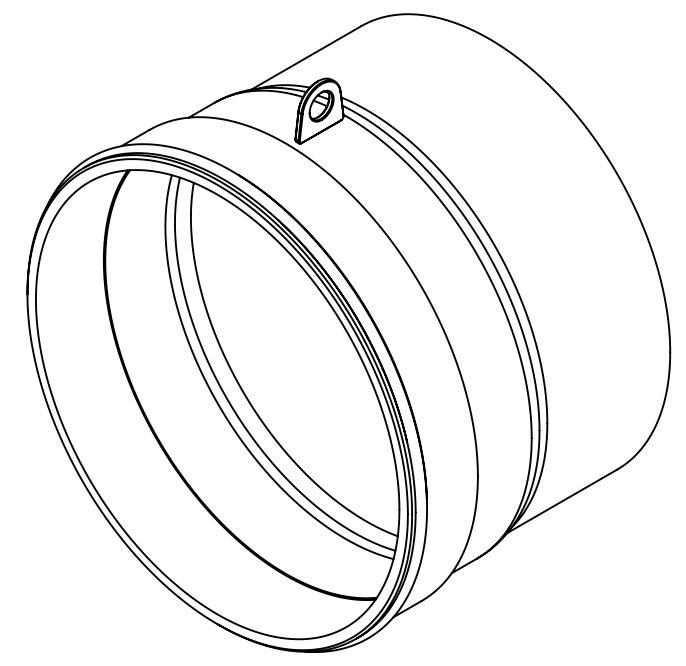
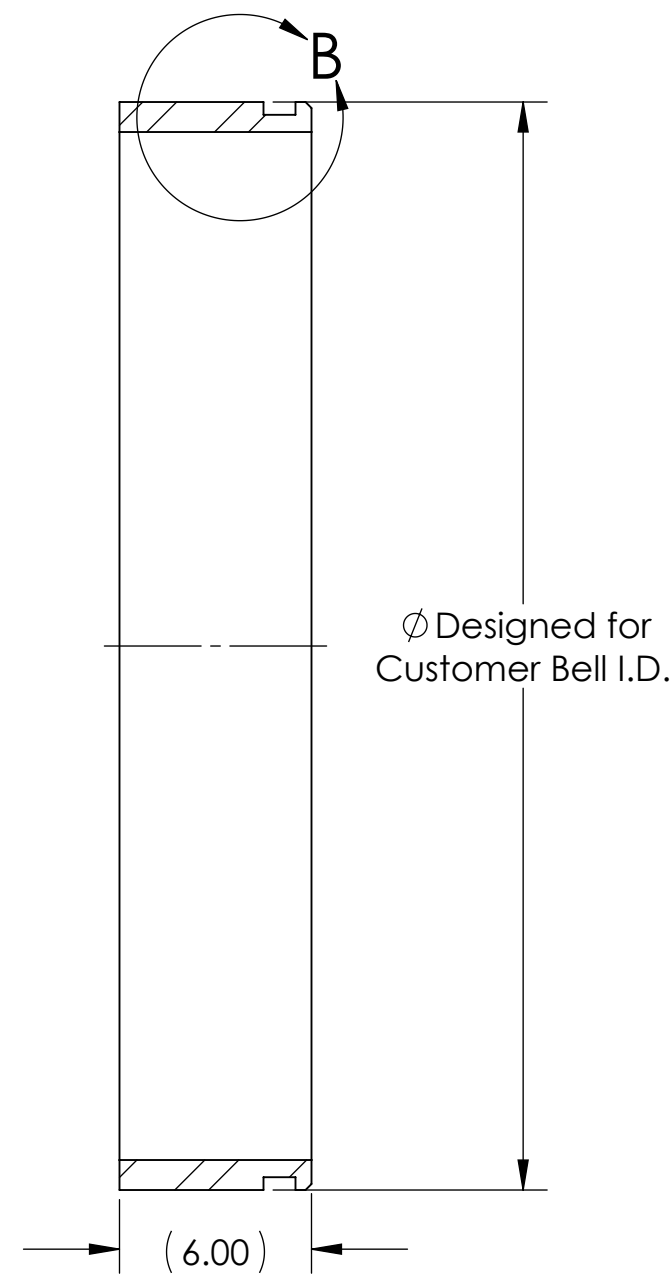
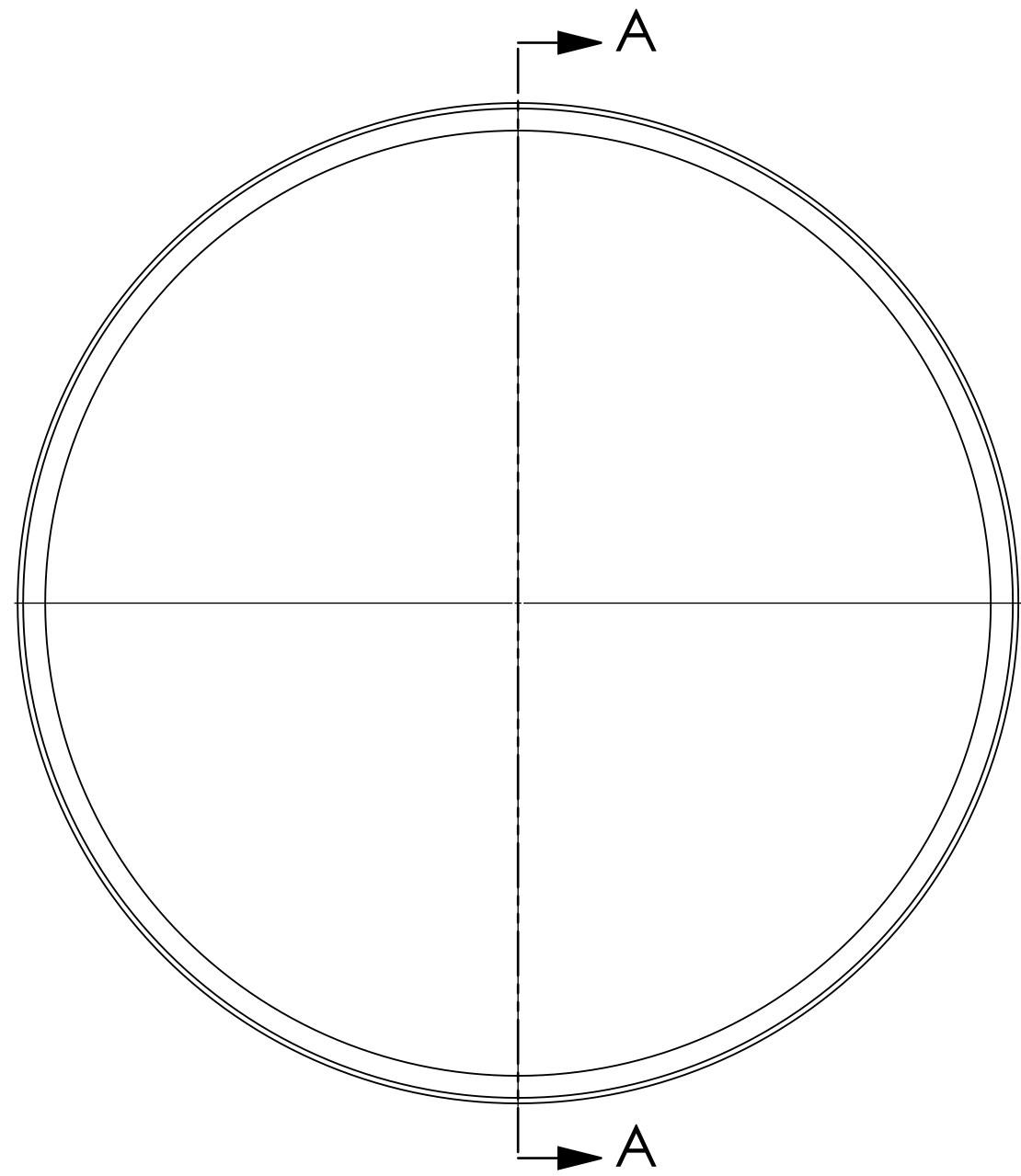
08/25/21

TITLE  
**SPECIFICATION  
CPP ADAPTER - BELL  
MODEL 935**

 <b>Smith-Blair</b> a xylem brand	P/N	N/A
	DWG. NO.	SPEC_935.DRW
	3 OF 4 SHEET	08/25/21 REV.

Sheet Size = 11 X 17

REV.	BY	DATE	DESCRIPTION
------	----	------	-------------



SECTION A-A  
SCALE 1 : 6

DETAIL B  
SCALE 1 : 2

Notes:

1. Fabricated steel spigot with gasket groove detailed
2. Spigot x Plain End CPP Adapter shown above
3. See appropriate specification sheet for adapter end details

TOLERANCES U.N.O. .XX= ±.05 .XXX= ±.010 ANGLES= ±1° MACH. FIN=V125 FRACTIONS=1/16 ALL DIMENSIONS ARE IN INCHES	NOTES U.N.O. REMOVE BURRS. REMOVE SHARP EDGES. DO NOT SCALE DWG.	APP'D	DATE
		CK'D	DATE
	TSK NO.	DRN	IKD
			DATE

08/25/21

TITLE  
**SPECIFICATION  
CPP ADAPTER - SPIGOT  
MODEL 936**

 <b>Smith-Blair</b> a xylem brand	P/N	N/A
	DWG. NO.	SPEC_936.DRW
	4 OF 4 SHEET	08/25/21 REV.