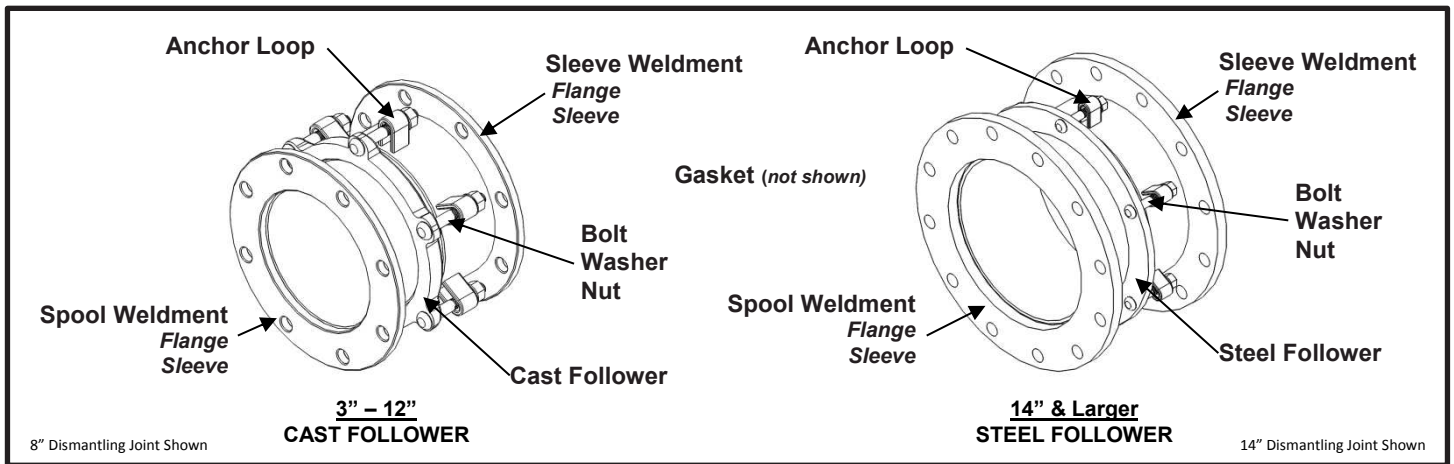


# SPECIFICATION

## DISMANTLING JOINT (NON-RESTRAINED)

### MODEL 971



#### APPLICATIONS

- **Typical Uses**
  - Joining flanged fittings, pumps, meters, valves, or other miscellaneous flanged service equipment
  - Ideal for connecting butterfly/wafer valves or pumps requiring service for maintenance
- **Standard Pipe Sizes**
  - 3" & Larger
- **Type of Pipe**
  - Any flanged pipe or fittings
- **Working Pressure**
  - 3" – 12" nominal pipe size(s) = 175 psi
  - 14" and greater nominal pipe size(s) = 150 psi
  - *See options for higher working pressure design*

#### MATERIALS

- **Followers**
  - **Cast Follower (3" – 12")**
    - Cast using Ductile Iron 65-45-12 per ASTM A536
    - Flexi-Coat<sup>®</sup> fusion bonded epoxy finish
    - Permanently marked with part number and pipe size range for proper selection
    - Integral bolt head pocket for one wrench installation
  - **Steel Follower (14" & Larger)**
    - Carbon Steel C1020 per ASTM A576
    - Flexi-Coat<sup>®</sup> fusion bonded epoxy finish
    - Integral bolt head pocket for one wrench installation
- **Sleeve Weldment**
  - **Sleeve**
    - Material: 3 - 5" nominal pipe size(s) = Carbon Steel per ASTM A513 or A53
    - 6" and larger nominal pipe size(s) = Carbon Steel per ASTM A283C
    - Flexi-Coat<sup>®</sup> fusion bonded epoxy finish
    - Larger O.D. sleeves provided with hanging ring(s) for ease of installation
    - Total angular deflection up to 1-1/2° per joint



# SPECIFICATION

## DISMANTLING JOINT (NON-RESTRAINED)

### MODEL 971

---

- **Flange**
  - Carbon Steel per ASTM A36
  - AWWA C207 Class D 150#
- **Spool Weldment**
  - **Sleeve**
    - Material: 3 - 6" nominal pipe size(s) = Carbon Steel per ASTM A513 or A53  
8" and larger nominal pipe size(s) = Carbon Steel per ASTM A283C
    - Flexi-Coat<sup>®</sup> fusion bonded epoxy finish
    - Nominal sizes 18"-24" spool weldment sleeve are expanded larger than through-bore at flange end only. All other sizes are through-bore design.
    - Total angular deflection up to 1-1/2° per joint
    - Telescoping design allows spool weldment to travel through sleeve weldment
  - **Flange**
    - Carbon Steel per ASTM A36
    - AWWA C207 Class D 150#
- **Gasket**
  - Nitrile (Buna-N) per ASTM D2000
  - Compounded to resist water, oil, natural gas, acids, alkalies, most (aliphatic) hydrocarbon fluids, and many other chemicals
  - Temperature range: -20°F to +180°F
- **Anchor Loop**
  - Carbon Steel per ASTM A36
- **Bolts**
  - High Strength Low Alloy (HSLA) Steel per AWWA C111/A21.11
  - 5/8"-11UNC, 4.50", Oval Neck Track Head
  - Rolled threads for improved physical characteristics, greater thread accuracy, and smooth surface finish
- **Nut**
  - (HSLA) Steel per AWWA C111/A21.11
  - 5/8"-11UNC, Heavy Hex Semi-Finished
- **Washer**
  - Carbon Steel per ASTM F844
  - Fe/Zn coated per ASTM F1941-10
  - 5/8" Type A Plain
  - Utilized to preserve corrosion resistance of epoxy coated surfaces and increase bearing surface

# SPECIFICATION

## DISMANTLING JOINT (NON-RESTRAINED)

### MODEL 971

---

#### LISTINGS

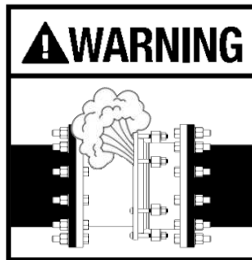
- Certified to NSF/ANSI 61 and NSF/ANSI 372
- Meets applicable portions AWWA C219
- Fusion-Bonded Epoxy Coating meets requirements of AWWA C213

#### OPTIONS

- Other materials of construction (e.g. 304SS, 316SS, etc.)
- Type 304 Stainless Steel hardware with fluoropolymer coated nuts to prevent galling
- Type 316 Stainless Steel hardware with fluoropolymer coated nuts to prevent galling
- Alternative gasket material (e.g. Viton, EPDM, etc.)
- Anode connector
- Anchor studs (Pipe Restraint)
- Pipe stops incorporated into sleeve
- Higher working pressure design
- Custom flange to flange lengths
- Any industry standard flange
- Reducing joints

#### NOTES

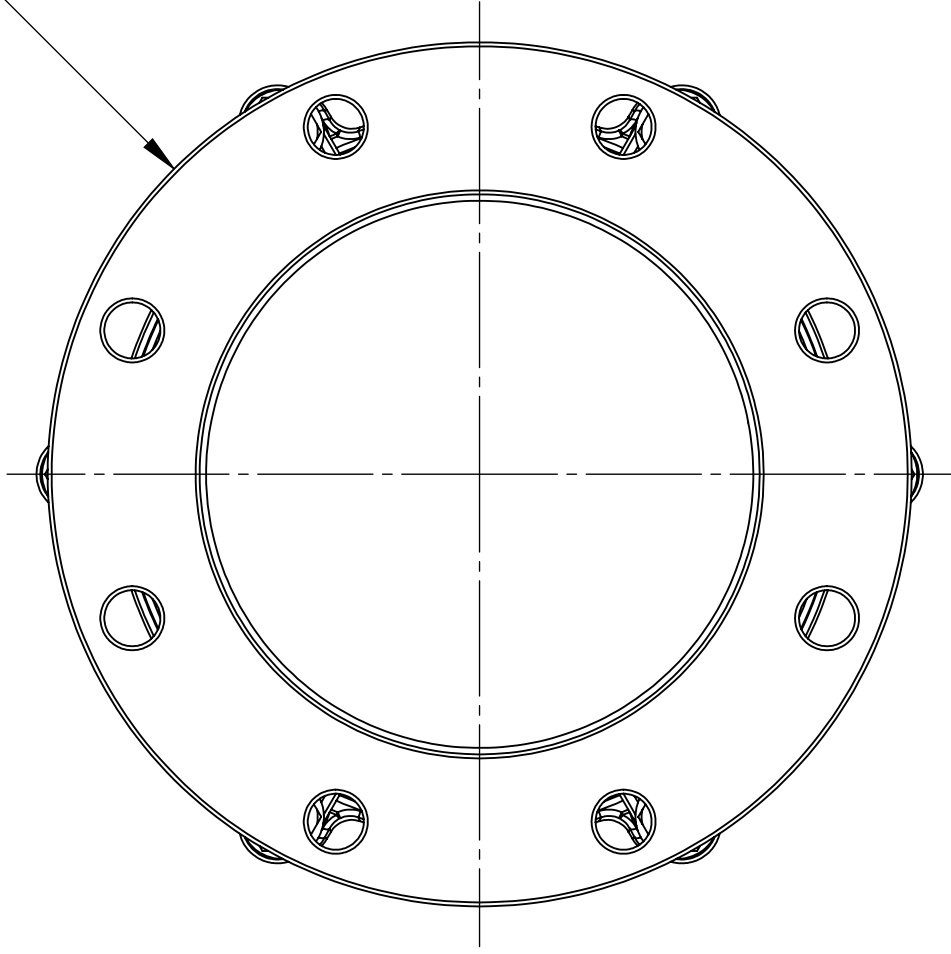
- Flexi-Coat® is a registered trademark of Smith-Blair Inc.
- These product specifications were correct at the time of publication and are subject to change without notice
- See the Smith-Blair website for part numbers and ordering information
- See the Smith-Blair website for warranty information
- See the Smith-Blair website for corrosion notice



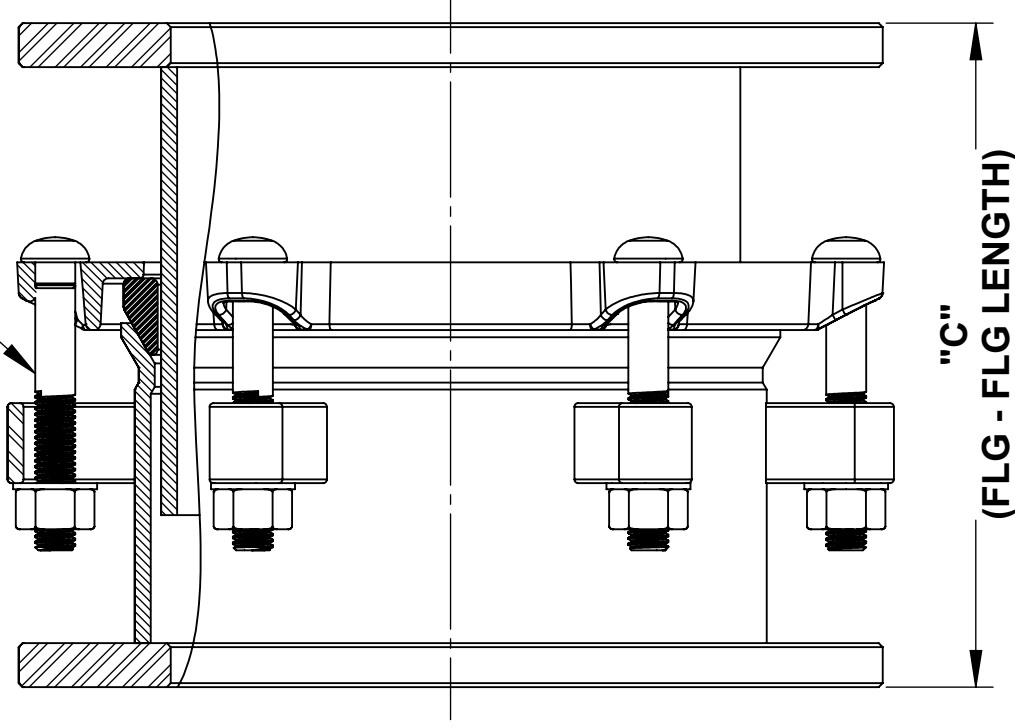
**THIS PRODUCT DOES NOT RESTRAIN PIPE MOVEMENT.** Proper anchoring is required to prevent pipe pullout. Failure to anchor or improper anchoring can result in dangerous pipe content escape, property damage, serious injury, or death. Read the product installation instructions prior to installing this product.

30 Globe Ave, Texarkana, AR 71854  
Ph: 870-773-5127 • Fax: 870-773-5212  
Toll-Free Numbers: Ph: 800-643-9705 • Fax: 800-648-6792

Ø "A"  
(FLANGE O.D.)



"B"  
(BOLT QTY)



"C"  
(FLG - FLG LENGTH)

## 3" - 12" CAST FOLLOWER

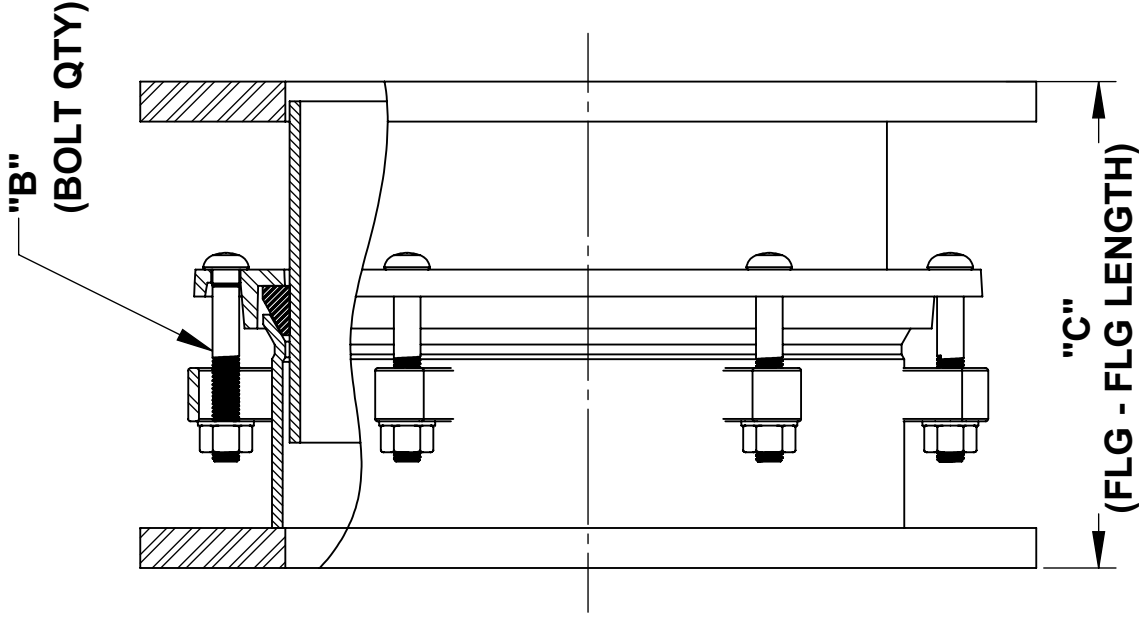
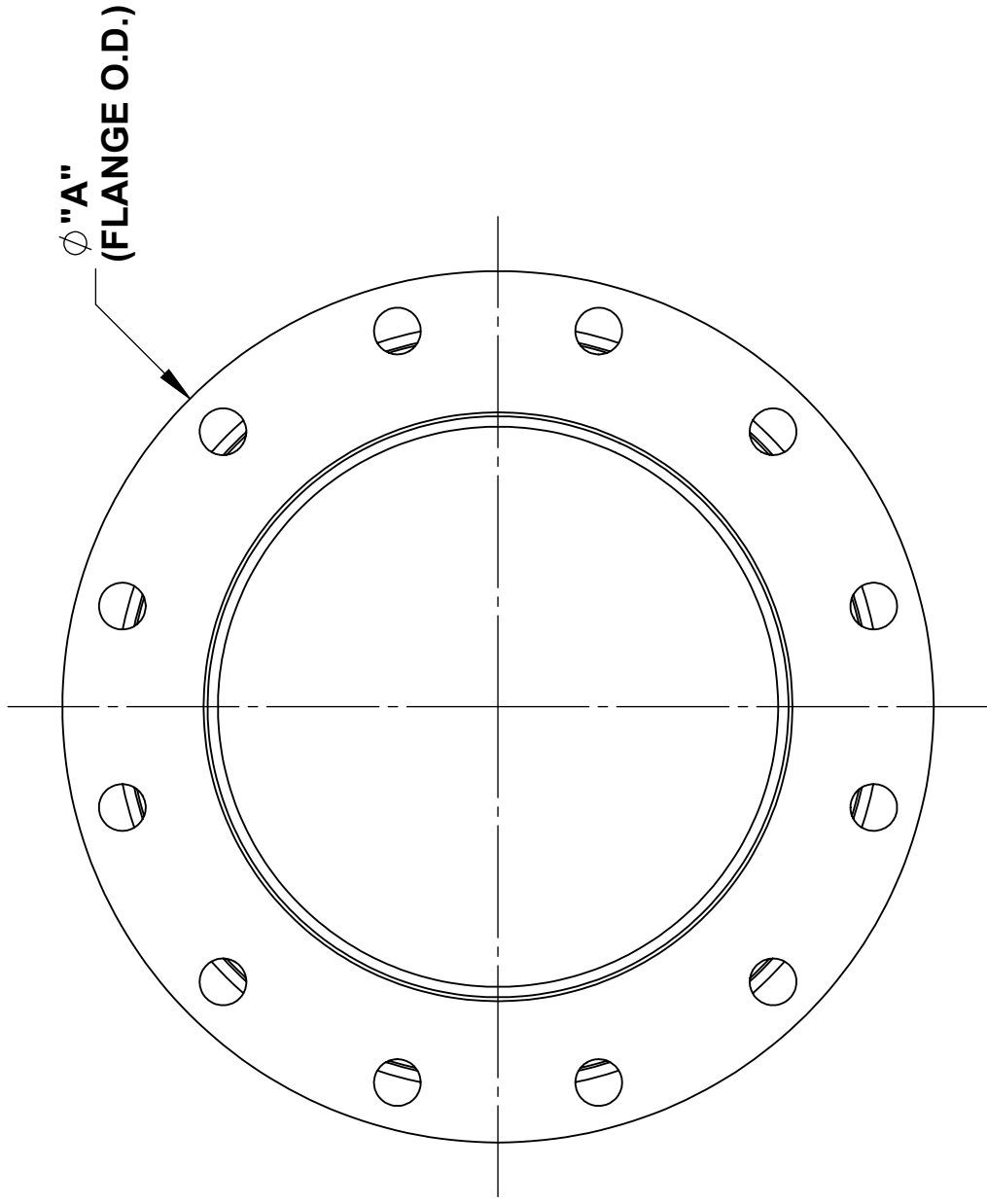
- NOTES:**  
 1. SEE SMITH-BLAIR CATALOG FOR ADDITIONAL DETAILS  
 2. 8" STANDARD LENGTH DISMANTLING JOINT SHOWN OTHER SIZES SIMILAR

NOM. PIPE SIZE	APPROX. WEIGHT (LBS)	A	B	C		
				MINIMUM	NOMINAL	MAXIMUM
3	28	7.50	2	8.00	9.00	10.00
4	30	9.00	4			
6	48	11.00	6	9.00	10.00	11.00
8	64	13.50	6			
10	79	16.00	8			
12	116	19.00	8			

### WRENCH SIZE CHART

NUT	SIZE
5/8"-11UNC HH	1-1/16"

TOLERANCES U.N.O. XX= ±.03 XXX= ±.015 FRACTIONS= ±.01 ANGLES= ±1° MACH. FIN=	NOTES: REMOVE BURRS AND SHARP EDGES DO NOT SCALE DWG.	APP'D	DATE
SCALE: N/A	DRN	CHD	DATE
ALL DIMENSIONS ARE IN INCHES.			11/16/15
<b>TITLE</b>			
<b>SPECIFICATION</b>			
<b>DISMANTLING JOINT (NON-RESTRAINED)</b>			
<b>MODEL 971</b>			
<b>SMITH-BLAIR, Inc.</b>		P/N N/A	
TEXARKANA, ARKANSAS		<b>SPEC_971.DRW</b>	
		1 OF 2 SHEET	
		9/21/16 REV.	



**NOTES:**

1. SEE SMITH-BLAIR CATALOG FOR ADDITIONAL DETAILS
2. 14" STANDARD LENGTH DISMANTLING JOINT SHOWN OTHER SIZES SIMILAR
3. NOMINAL SIZES 18"-24" SPOOL WELDMENT SLEEVE ARE EXPANDED LARGER THAN THROUGH-BORE AT FLANGE END ONLY. ALL OTHER SIZES ARE THROUGH-BORE DESIGN AS SHOWN.

# 14" & LARGER STEEL FOLLOWER

NOM. PIPE SIZE	APPROX. WEIGHT (LBS)	C		
		A	B	MINIMUM NOMINAL MAXIMUM
14	158	21.00	8	11.00 12.00 13.00
16	202	23.50		
18	221	25.00		
20	263	27.50	10	12.00 13.00 14.00
24	340	32.00		
30	510	38.75	14	15.00 16.00 17.00
36	740	46.00		
42	970	53.00	18	17.00 18.00 19.00
48	1215	59.50		
54	1660	66.25	24	17.00 18.00 19.00
60	2225	73.00		
66	2800	80.00	28	17.00 18.00 19.00
72	3230	86.50		

WRENCH SIZE CHART	
NUT	SIZE
5/8"-11UNC HH	1-1/16"

TOLERANCES U.N.O. XX= +.03 XXX= +.015 FRACTIONS= ANGLES=+1° MACH. FIN=	NOTES: REMOVE BURRS AND SHARP EDGES DO NOT SCALE DWG.	APP'D	DATE
SCALE: N/A		CK'D	DATE
ALL DIMENSIONS ARE IN INCHES.		DRN	DATE
<b>TITLE</b> <b>SPECIFICATION</b> <b>DISMANTLING JOINT (NON-RESTRAINED)</b> <b>MODEL 971</b>		CHD	11/16/15
<b>SMITH-BLAIR, Inc.</b> TEXARKANA, ARKANSAS		P/N	N/A
DWG. NO. <b>SPEC_971.DRW</b>		2 OF 2 SHEET	9/21/16 REV.