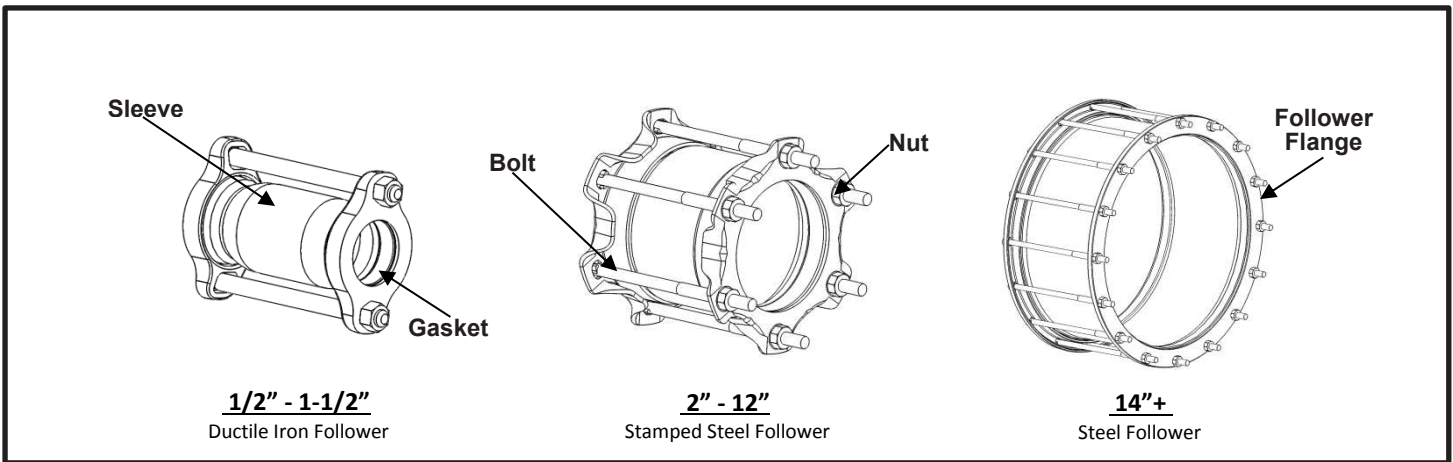


SPECIFICATION E-SERIES SEAL-ONLY IPS COUPLING



APPLICATIONS

- **Typical Uses**
 - Joining IPS x IPS plain end pipes of same outside diameter
 - For conductive connection applications
- **Standard Pipe Sizes**
 - 1/2" nominal and greater
- **Type of Pipe**
 - Steel x Steel
- **Pressure Rating**
 - Working Pressure: 1/2" - 1-1/2" nominal pipe size(s) = 150 PSI
2" - 12" nominal pipe size(s) = 400 PSI
14"+ nominal pipe size(s) = 150 PSI
 - Test Pressure = (Working Pressure) x 2

MATERIALS

- **Follower Flanges**
 - Material: 1/2" - 1-1/2" nominal pipe size(s) = ASTM A536 Grade 65/45/12, Ductile Iron
2" - 12" nominal pipe size(s) = ASTM A569 Grade 1008/1010 HR, Carbon Steel
14"+ nominal pipe sizes(s) = ASTM A576 C1020 Carbon Steel
 - Flexi-Coat® fusion bonded epoxy
- **Sleeve**
 - Material: 1/2" - 12" nominal pipe size(s) = ASTM A513 Grade 1008/1010 HREW, Carbon Steel
14"+ nominal pipe size(s) = ASTM A283 Grade C, Carbon Steel
 - Standard Lengths: 5", 7", 10", 16", 24"
 - Flexi-Coat® fusion bonded epoxy
- **Gaskets**
 - Material: 1/2" - 1 1/2" nominal pipe size(s) = Nitrile (Buna-N) ASTM-D2000 Rubber
2"+ nominal pipe size(s) = SBR ASTM-D2000 Rubber
 - Resistant to Natural Gas, Natural Gas Odorants, Carbon Dioxide, Water, UV, Ozone, and other chemicals

SPECIFICATION E-SERIES SEAL-ONLY IPS COUPLING

- **Bolts**
 - High Strength Low Alloy (HSLA) Steel
 - Size: 1/2" - 1-1/2" nominal pipe size(s) = 1/2"-13UNC, Oval Neck, Track-head, Fe/Zn coated
2"+ nominal pipe size(s) = 5/8"-11UNC, Track-head, barbed for continuity
 - Rolled threads for improved physical characteristics, greater thread accuracy, and smooth surface finish
- **Nuts**
 - HSLA Steel
 - Size: 1/2" - 1-1/2" nominal pipe size(s) = 1/2"-13UNC, Heavy Hex, Fe/Zn coated
2"+ nominal pipe size(s) = 5/8"-11UNC, X-Heavy Hex Semi-Finished

REGULATIONS

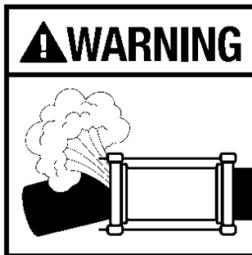
- Marked in accordance with DOT CFR49-192.63(a)(2)

OPTIONS

- Stainless Steel hardware with fluoropolymer coated nuts
- Bare Sleeve I.D.
- Conductive Bonded gasket
- EPDM Gasket
- Graphited Fiber gasket
- Nitrile Gasket
- Copper clad connector for sacrificial anode or cathodic protection

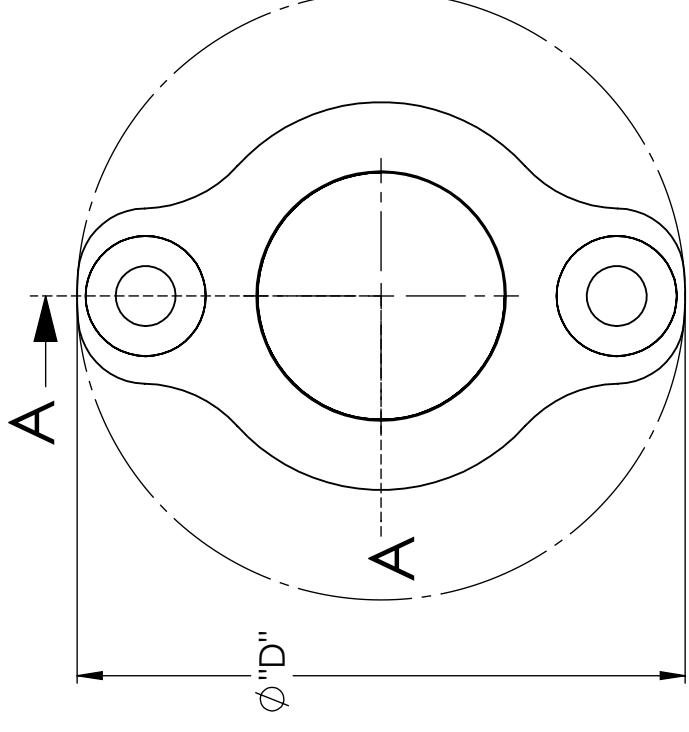
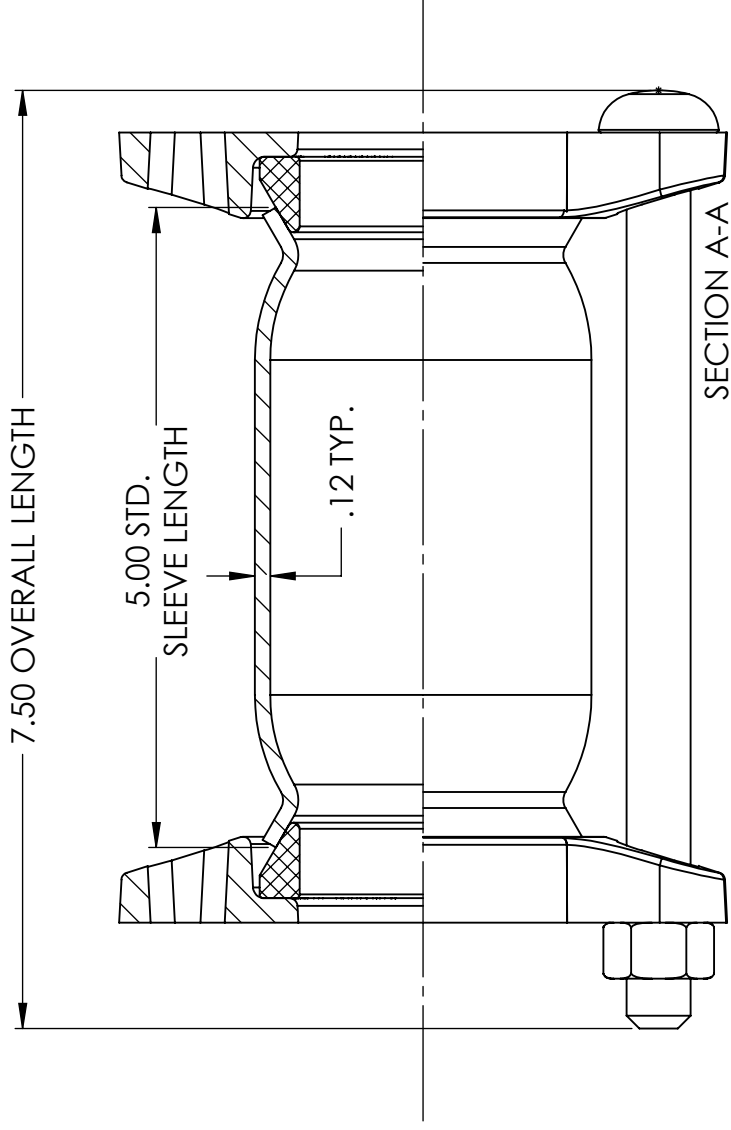
NOTES

- Additional specifications available for Cast Iron Reducing as well as IPS Reducing and Insulating applications
- Flexi-Coat® is a registered trademark of Smith-Blair, Inc.
- These product specifications were correct at the time of publication and are subject to change without notice
- See the Smith-Blair website for part numbers and ordering information
- See the Smith-Blair website for warranty information
- See the Smith-Blair website for corrosion notice



THIS PRODUCT DOES NOT RESTRAIN PIPE MOVEMENT.
Proper anchoring is required to prevent pipe pullout. Failure to anchor or improper anchoring can result in dangerous pipe content escape, property damage, serious injury, or death.
Read the product installation instructions prior to installing this product.

UP TO 1-1/2" CAST FOLLOWER



SEE CATALOG FOR ORDERING DETAILS
5" SLEEVE, PLAIN GASKET CONFIGURATION SHOWN
CONTACT SMITH-BLAIR FOR ADDITIONAL CONFIGURATIONS

NOMINAL PIPE SIZE	PIPE DIAMETER	PART NUMBER	DIAMETER "D"	BOLT QUANTITY	WEIGHT (LBS)
1/2	.84	E058A5P	3.56	2	2
3/4	1.05	E078A5P	3.69	2	2
1	1.32	E08A5P	4.06	2	4
1-1/4	1.66	E18A5P	4.51	2	4
1-1/2	1.90	E108A5P	4.75	2	4

TOLERANCES U.N.O.
XX= ±.03
XXX= ±.015
FRACTIONS= MACH.
ANGLES= ±1°
MACH. FIN=

NOTES:
REMOVE BURRS
AND SHARP EDGES
DO NOT SCALE DWG.

SCALE: N/A

DATE

DATE

DATE

APP'D

CK'D

DRN

SPW

DATE

9/29/16

TITLE

SPECIFICATION
Seal-Only E-Series Coupling
IPS Straight

P/N

SMITH-BLAIR, Inc.
TEXARKANA, ARKANSAS

Various

E IPS.DRW

DWG. NO.

3

OF

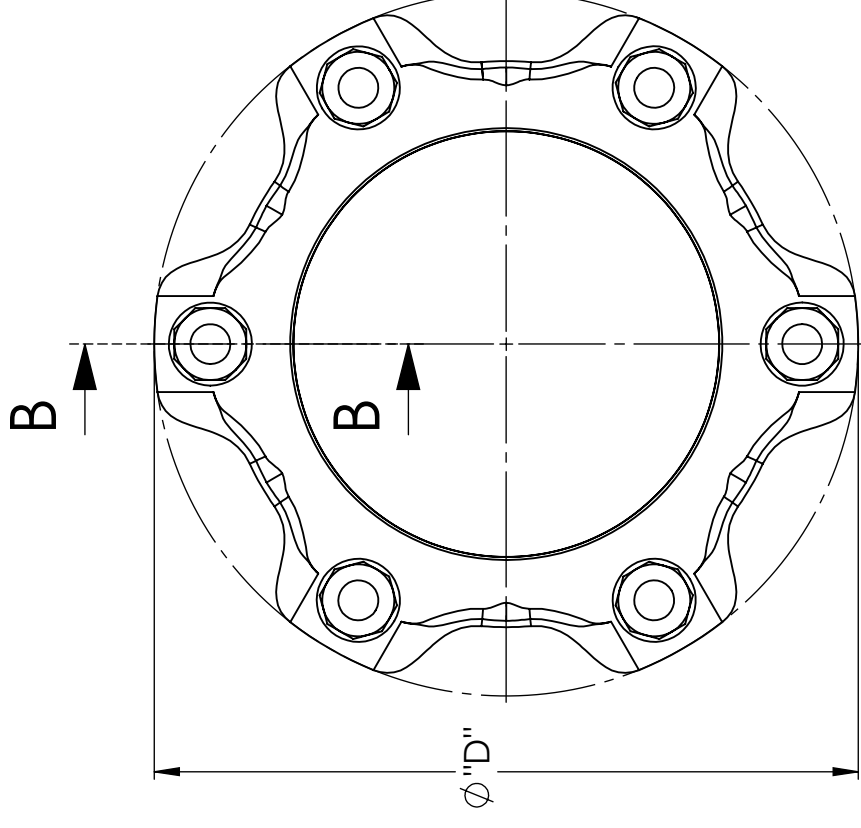
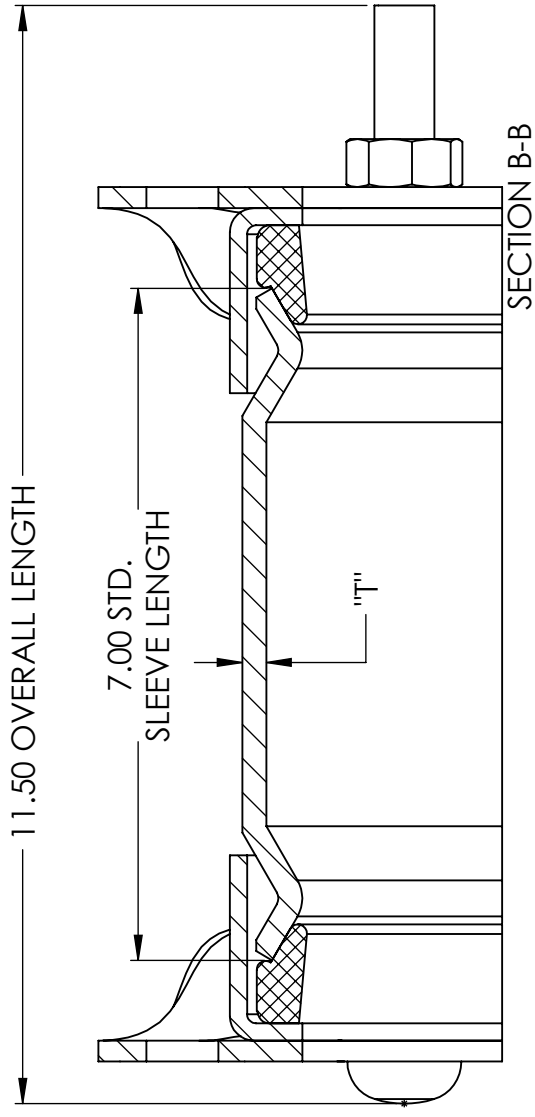
5

SHEET

11/14/16

REV.

2" THRU 12" STAMPED STEEL FOLLOWER

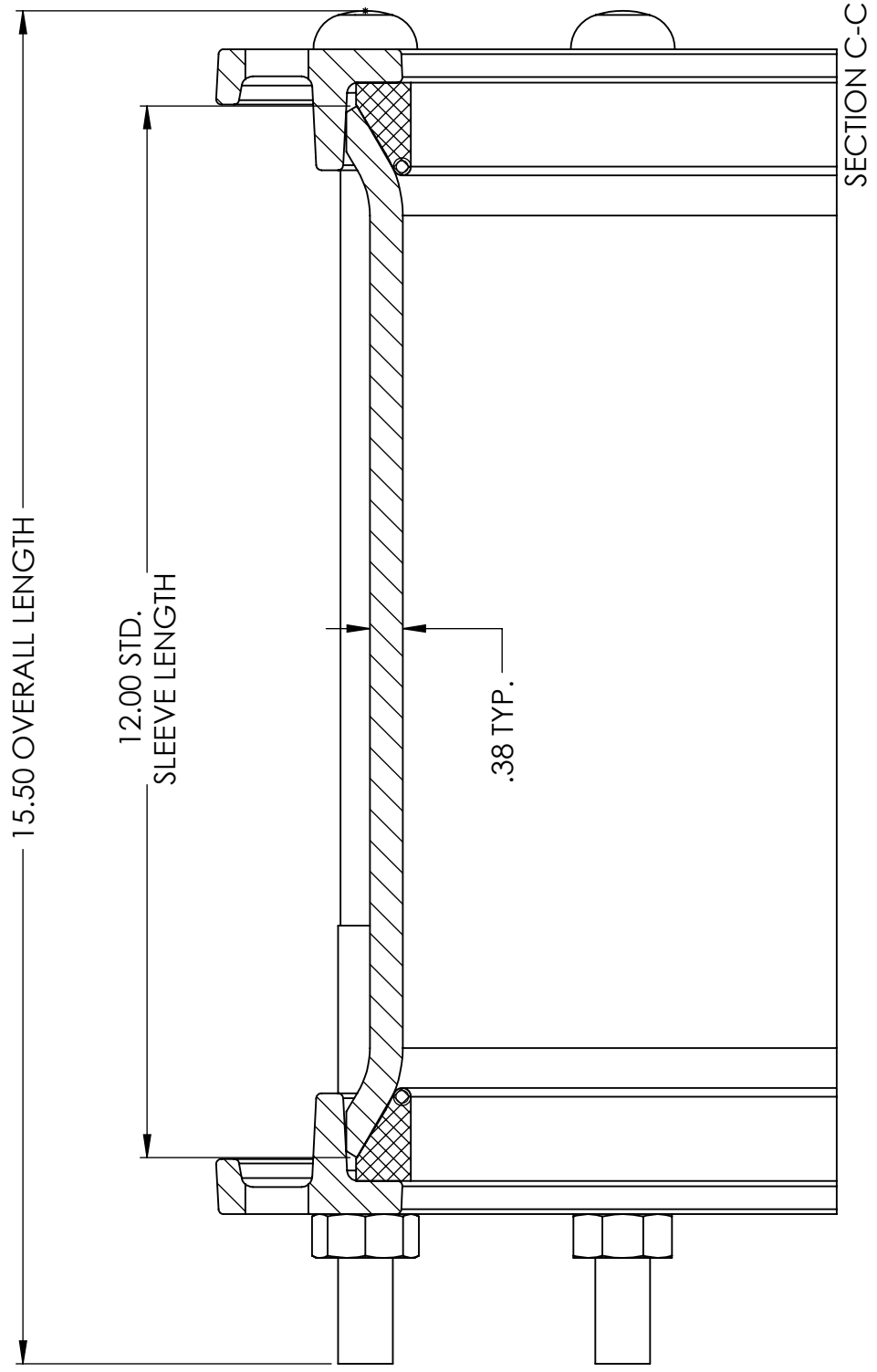
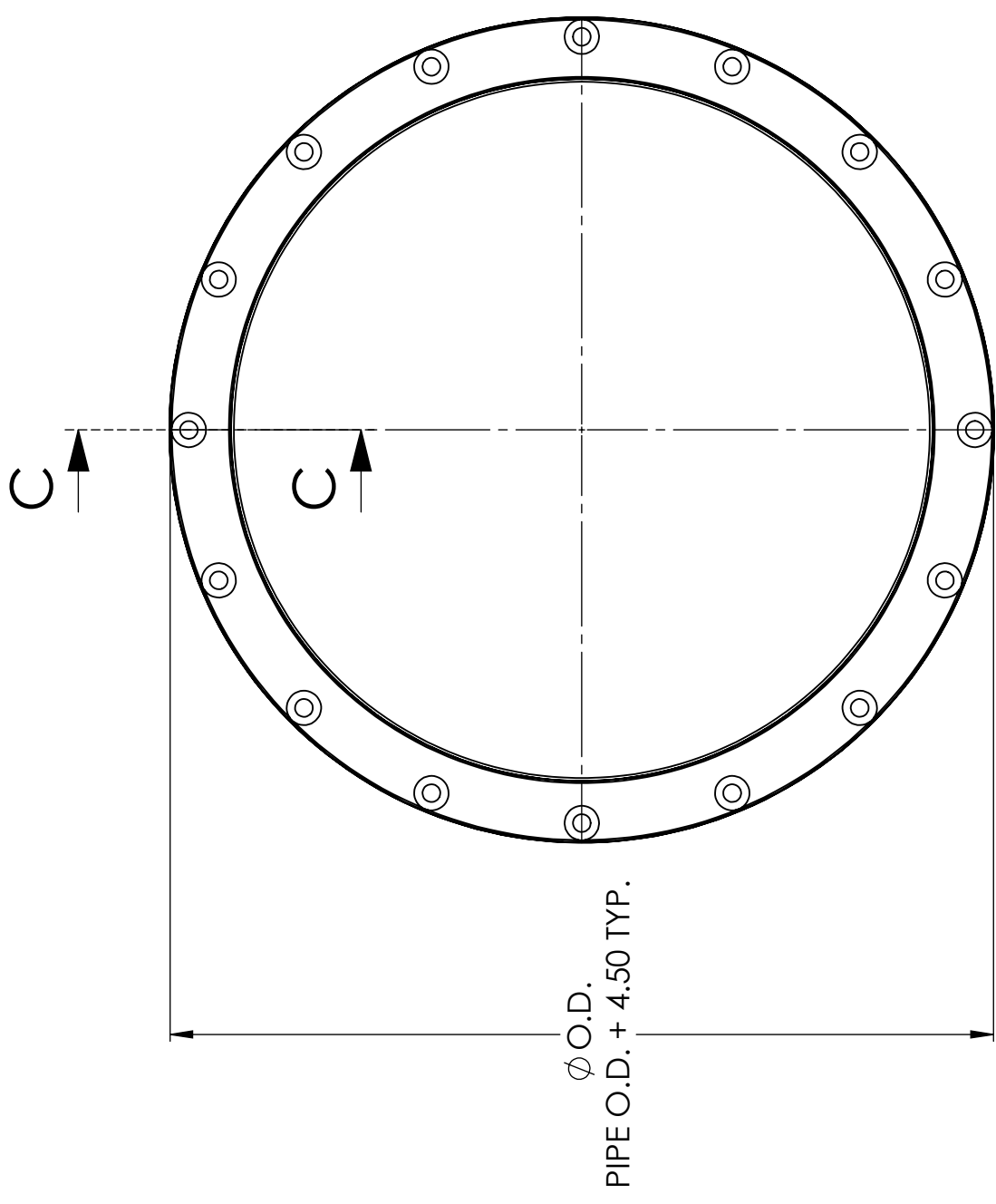


SEE CATALOG FOR ORDERING DETAILS
7" SLEEVE, PLAIN GASKET CONFIGURATION SHOWN
CONTACT SMITH-BLAIR FOR ADDITIONAL CONFIGURATIONS

PIPE DIAMETER	PART NUMBER	SLEEVE THICKNESS "T"	DIAMETER "D"	BOLT QUANTITY	WEIGHT (LBS)
2.38	E28A7P	.16	6.75	3	8
2.88	E208A7P	.16	7.75	3	11
3.50	E38A7P	.16	7.75	4	16
4.50	E48A7P	.19	8.50	4	17
5.56	E58A7P	.28	11.00	6	31
6.63	E68B7P	.25	11.00	6	31
7.00	E78B7P	.25	11.00	6	28
8.63	E88B7P	.25	13.50	6	41
10.75	E1008B7P	.25	15.15	8	50
12.75	E1208B7P	.25	18.00	8	53

TOLERANCES U.N.O. XX= ±.03 XXX= ±.015 FRACTIONS= $\frac{\quad}{\quad}$ ANGLES= ±1° MACH. FIN=	NOTES: REMOVE BURRS AND SHARP EDGES DO NOT SCALE DWG.	APP'D	DATE
SCALE: N/A		CK'D	DATE
ALL DIMENSIONS ARE IN INCHES.		DRN	DATE
TITLE		SPW	DATE
SPECIFICATION Seal-Only E-Series Coupling IPS Straight			9/29/16
SMITH-BLAIR, Inc. TEXARKANA, ARKANSAS		P/N Various	
DWG. NO. E IPS.DRW		4 OF 5 SHEET	
		11/14/16 REV.	

14"± STEEL FOLLOWER



SEE CATALOG FOR ORDERING DETAILS
 .38" X 12" SLEEVE CONFIGURATION SHOWN, OTHER CONFIGURATIONS AVAILABLE
 CONTACT SMITH-BLAIR FOR AVAILABLE SIZES AND PART NUMBERS

TOLERANCES U.N.O. XX= ±.03 XXX= ±.015 FRACTIONS= 1/16 ANGLES= ±1° MACH. FIN=	NOTES: REMOVE BURRS AND SHARP EDGES DO NOT SCALE DWG.	APP'D CK'D DRN	DATE DATE DATE	SPW DATE	9/29/16
SCALE: N/A		ALL DIMENSIONS ARE IN INCHES.			
TITLE SPECIFICATION Seal-Only E-Series Coupling IPS Straight					
SMITH-BLAIR, Inc. TEXARKANA, ARKANSAS			P/N Various		
DWG. NO. E IPS.DRW			5 OF 5 SHEET 11/14/16 REV.		