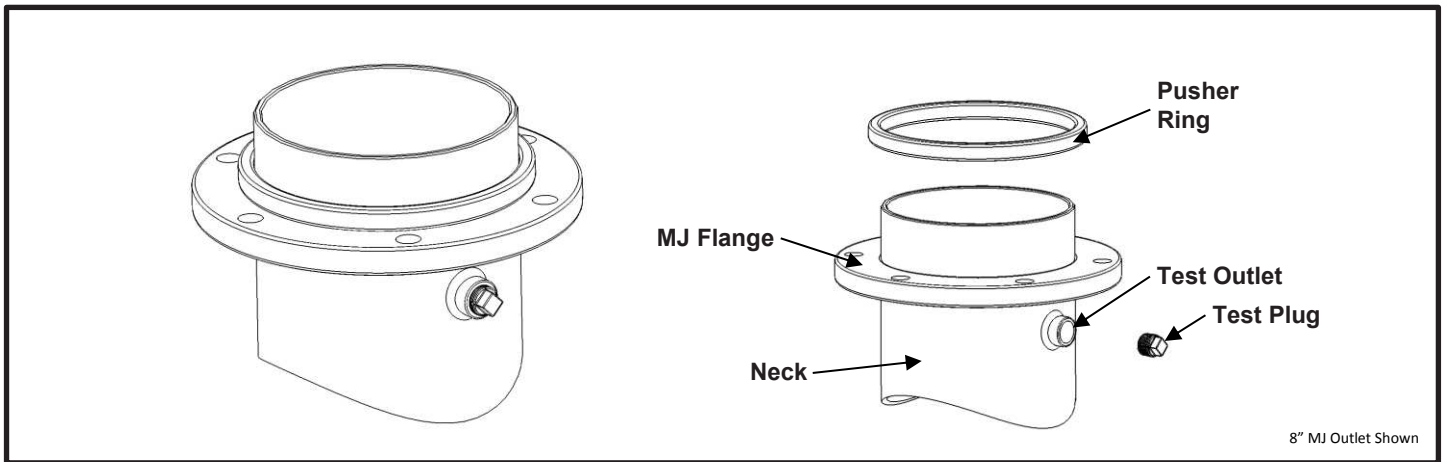


SPECIFICATION

MECHANICAL JOINT (MJ) OUTLET

MODEL MJ



APPLICATIONS

- **Typical Uses**
 - This Mechanical Joint (MJ) outlet option is available on any tapping sleeve to replace the standard outlet for connection to MJ valves or fittings
- **Outlet Size**
 - 3" to 12"
- **Working Pressure / Test Pressure**
 - See applicable tapping sleeve design

MATERIALS

- **Pusher Ring**
 - Sizes: 3" size = Machined integral to Outlet Flange
 - 4" – 12" sizes = Cast using Ductile Iron per ASTM A536
 - Flexi-Coat[®] fusion-bonded epoxy finish
 - Properly secured to MJ flange
- **Neck**
 - Material: See applicable tapping sleeve design
 - Furnished with 3/4" NPT test outlet
- **MJ Flange**
 - Material: See applicable tapping sleeve design
 - Meets applicable dimensional and tolerance requirements of AWWA C111
- **Test Outlet**
 - Material: See applicable tapping sleeve design
- **Welding**
 - Welds accomplished using qualified welders
 - GMAW weld process utilized
- **Finish**
 - See applicable tapping sleeve design



SPECIFICATION MECHANICAL JOINT (MJ) OUTLET MODEL MJ

LISTINGS

- Meets applicable dimensional and tolerance requirements of AWWA C111
- Certified to NSF/ANSI 61 and NSF/ANSI 372
- Fusion-Bonded Epoxy Coating meets requirements of AWWA C213

OPTIONS

- Custom neck length
- Stainless Steel Pusher Ring
- Female MJ outlet for plain-end pipe
- Larger outlet

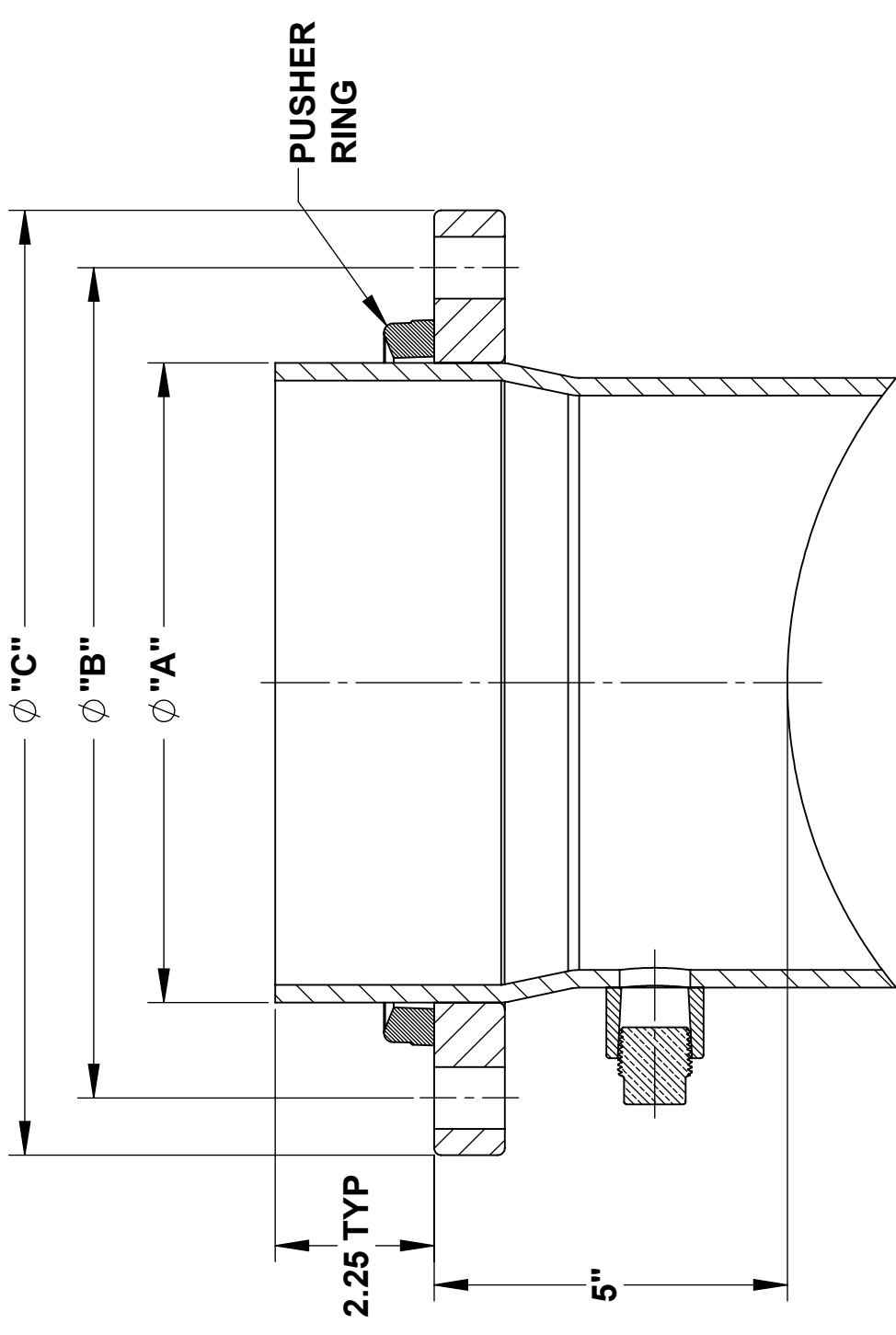
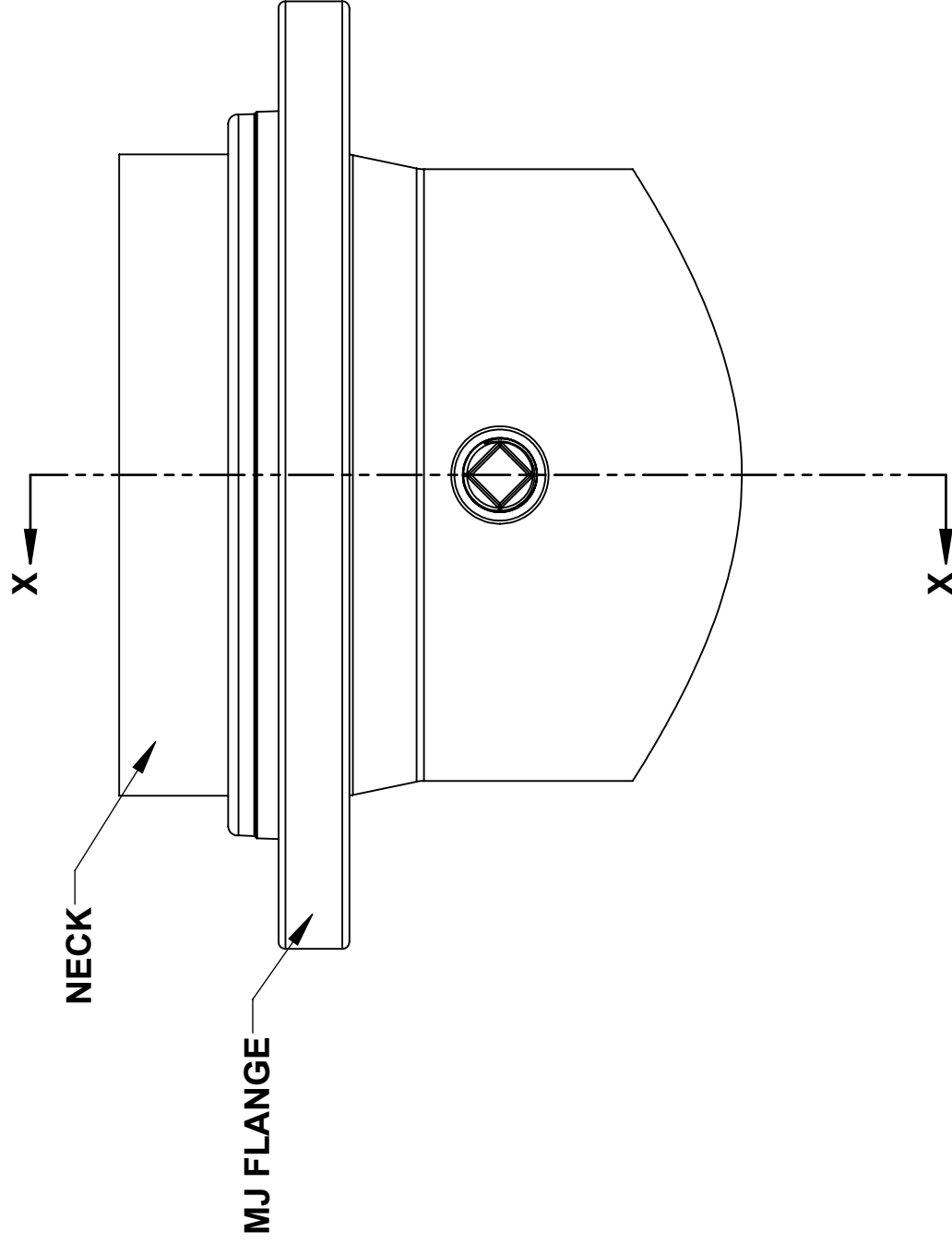
NOTES

- Reference applicable tapping sleeve model number specifications for more details and product warnings
- Flexi-Coat[®] is a registered trademark of Smith-Blair Inc.
- These product specifications were correct at the time of publication and are subject to change without notice
- See the Smith-Blair website for part numbers and ordering information
- See the Smith-Blair website for warranty information
- See the Smith-Blair website for corrosion notice

30 Globe Ave, Texarkana, AR 71854
Ph: 870-773-5127 • Fax: 870-773-5212
Toll-Free Numbers: Ph: 800-643-9705 • Fax: 800-648-6792

WRENCH SIZE CHART

3/4" SQ. PLUG	5/8"
---------------	------



SECTION X-X

OUTLET SIZE	A		B		C		BOLTING HOLES	
	3.96	4.80	6.19	7.50	7.69	9.12	QTY	SIZE
3	3.96	4.80	6.19	7.50	7.69	9.12	4	0.75
4	4.80	6.19	7.50	9.12	9.12	11.12	6	0.88
6	6.19	7.50	9.12	11.12	11.12	13.37	8	0.88
8	7.50	9.12	11.12	13.37	13.37	15.62		
10	9.12	11.12	13.37	15.62	15.62	17.88		
12	11.12	13.37	15.62	17.88	17.88			

NOTES:

1. 8" MJ OUTLET SHOWN OTHER SIZES SIMILAR
3. REFERENCE APPLICABLE TAPPING SLEEVE MODEL NUMBER SPECIFICATIONS FOR MORE DETAILS

TOLERANCES U.N.O. XX= ±.03 XXX= ±.015 FRACTIONS= 1/16 ANGLES= ±1° MACH. FIN.	NOTES: REMOVE BURRS AND SHARP EDGES DO NOT SCALE DWG.	APP'D	DATE
ALL DIMENSIONS ARE IN INCHES.	SCALE: N/A	CK'D	DATE
		DRN	DATE
		CHD	DATE
			8/3/16
TITLE			
SPECIFICATION			
MECHANICAL JOINT (MJ) OUTLET			
MODEL MJ			
P/N		N/A	
SPEC_MJ.DRW		1 OF 1 SHEET	
DWG. NO.		8/3/16 REV.	

SMITH-BLAIR, Inc.
TEXARKANA, ARKANSAS