

# e-MP Series

e-MPA, e-MPD, e-MPR & e-MPV

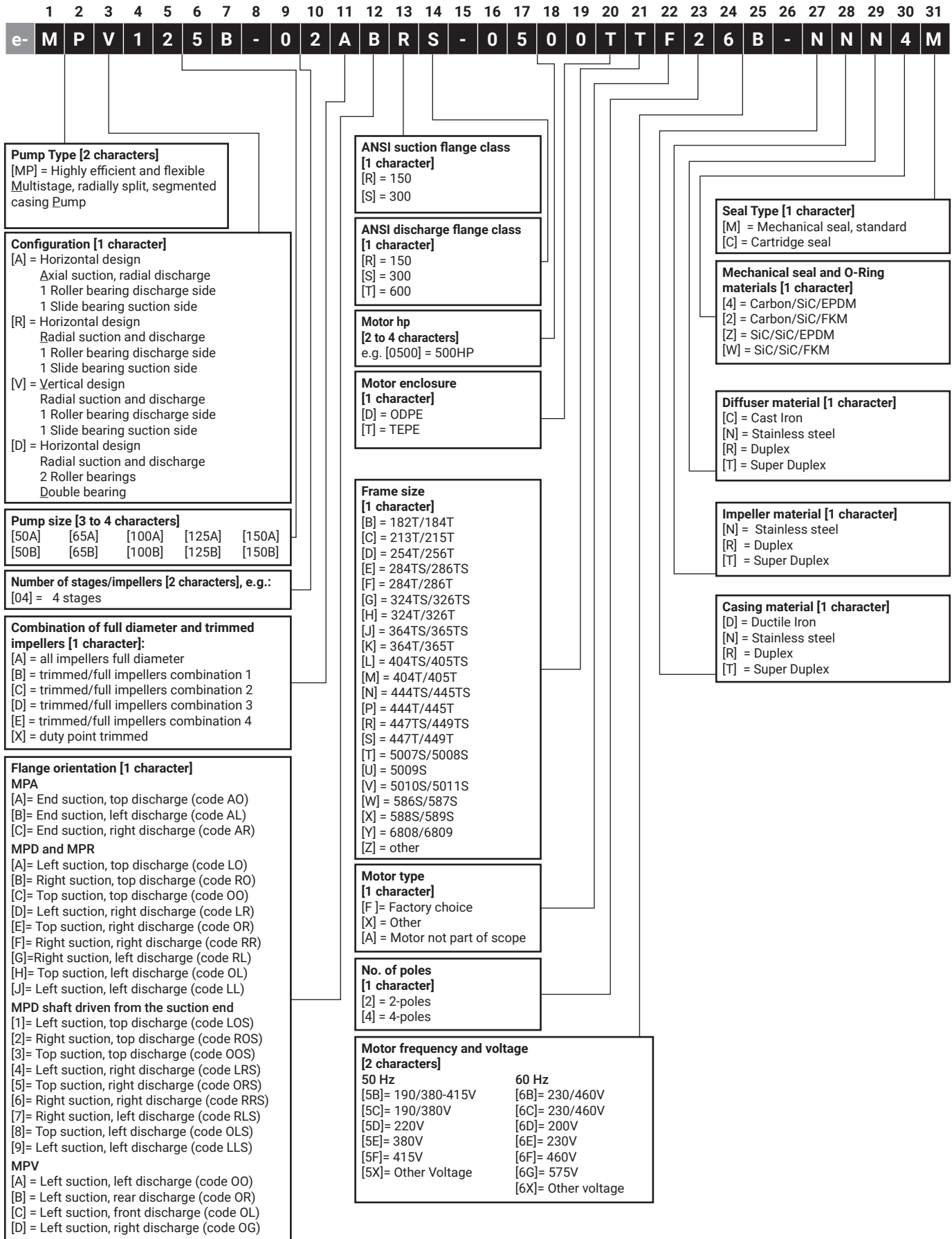
50A/B, 65A/B, 100A/B, 125A/B & 150A/B

Replacement parts

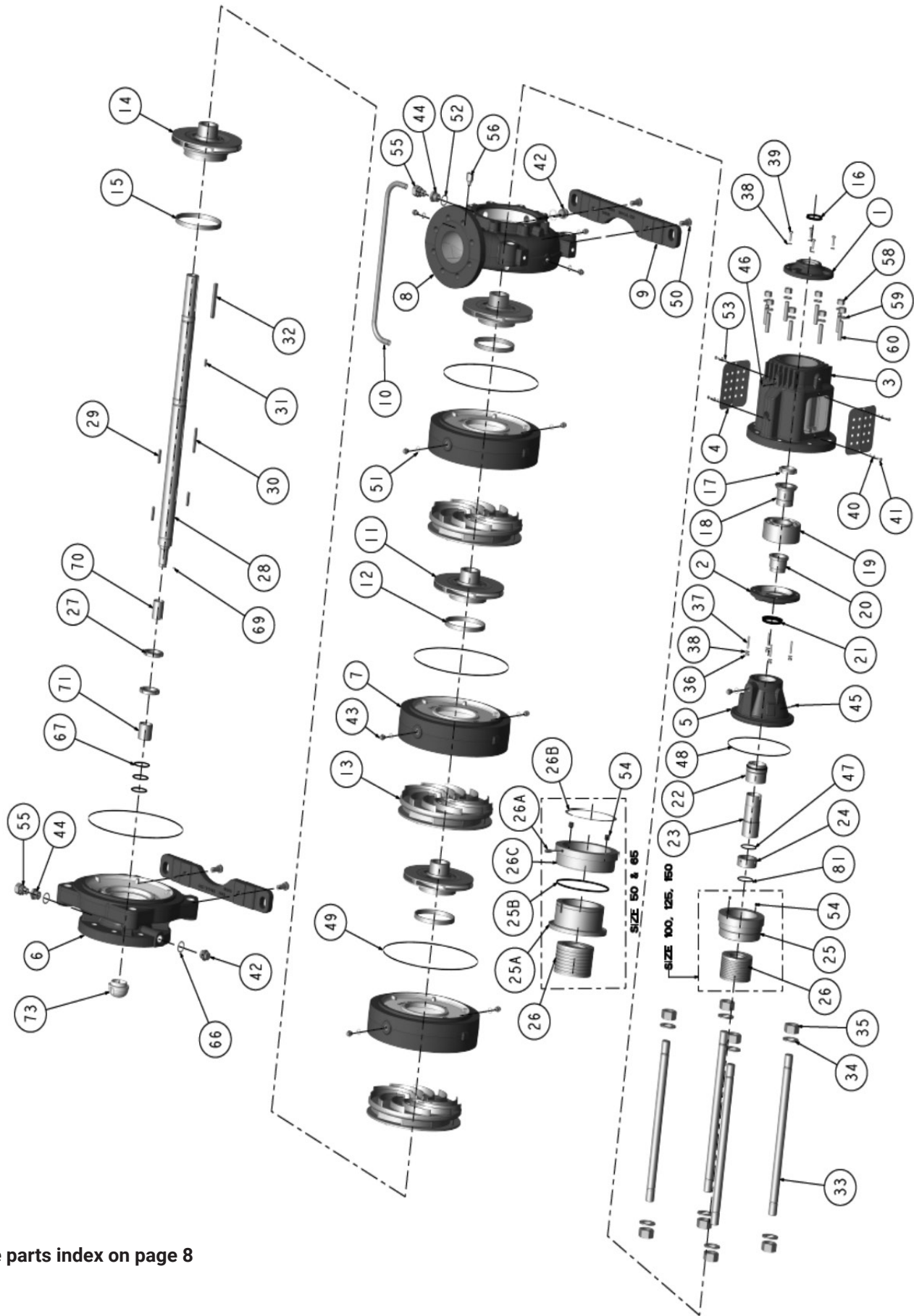
## Table of contents

Identification code .....	3
Exploded view e-MPA .....	4
Exploded view e-MPD .....	5
Exploded view e-MPR .....	6
Exploded view e-MPV .....	7
Exploded view index .....	8
Basic service kit .....	9
e-MP A/V/R and e-MPD .....	10
Mechanical Seal .....	10
Vertical coupling .....	12
Horizontal coupling.....	14

# Identification code

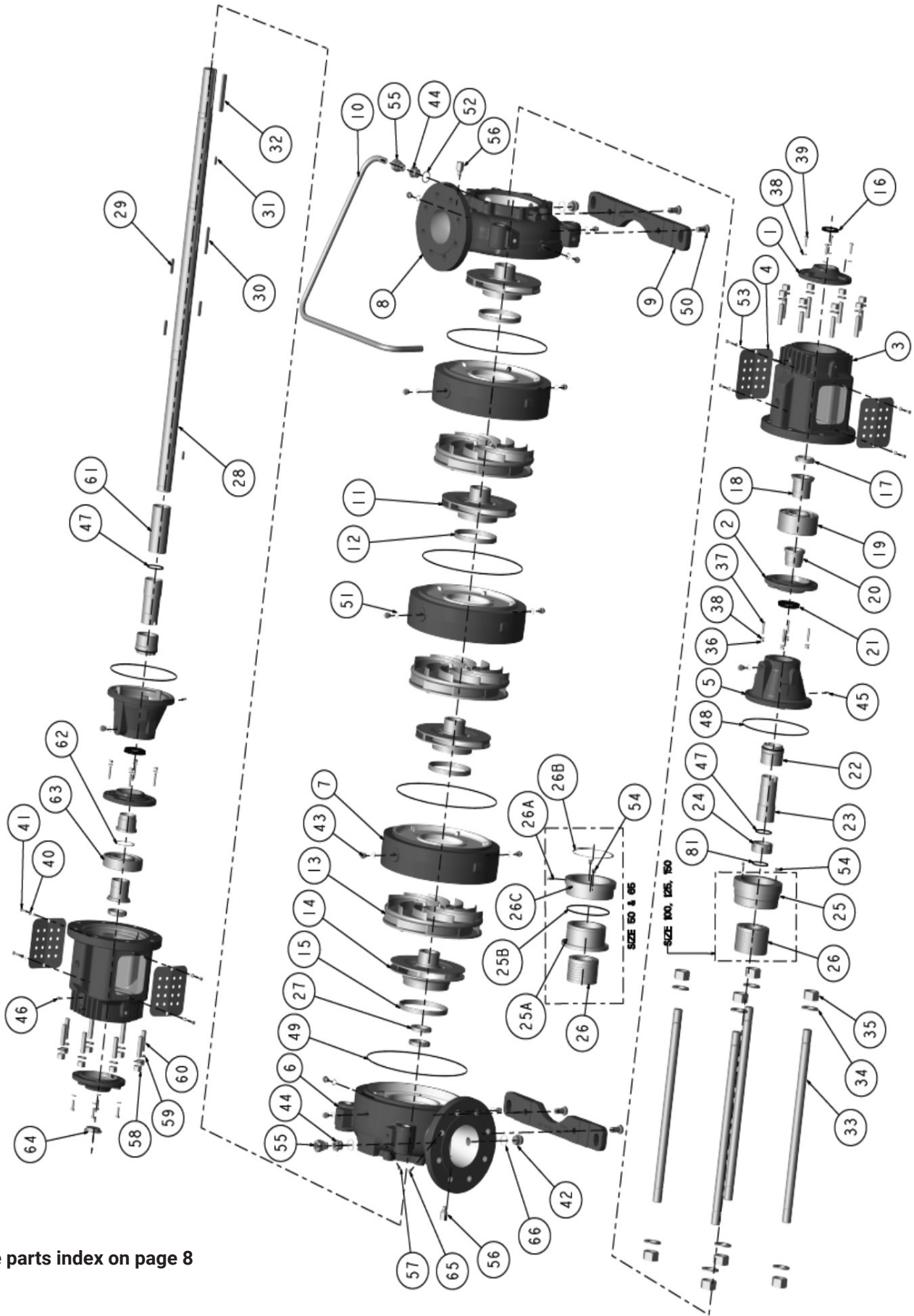


e-MPA size 50, 65, 100, 125 and 150 – Exploded view



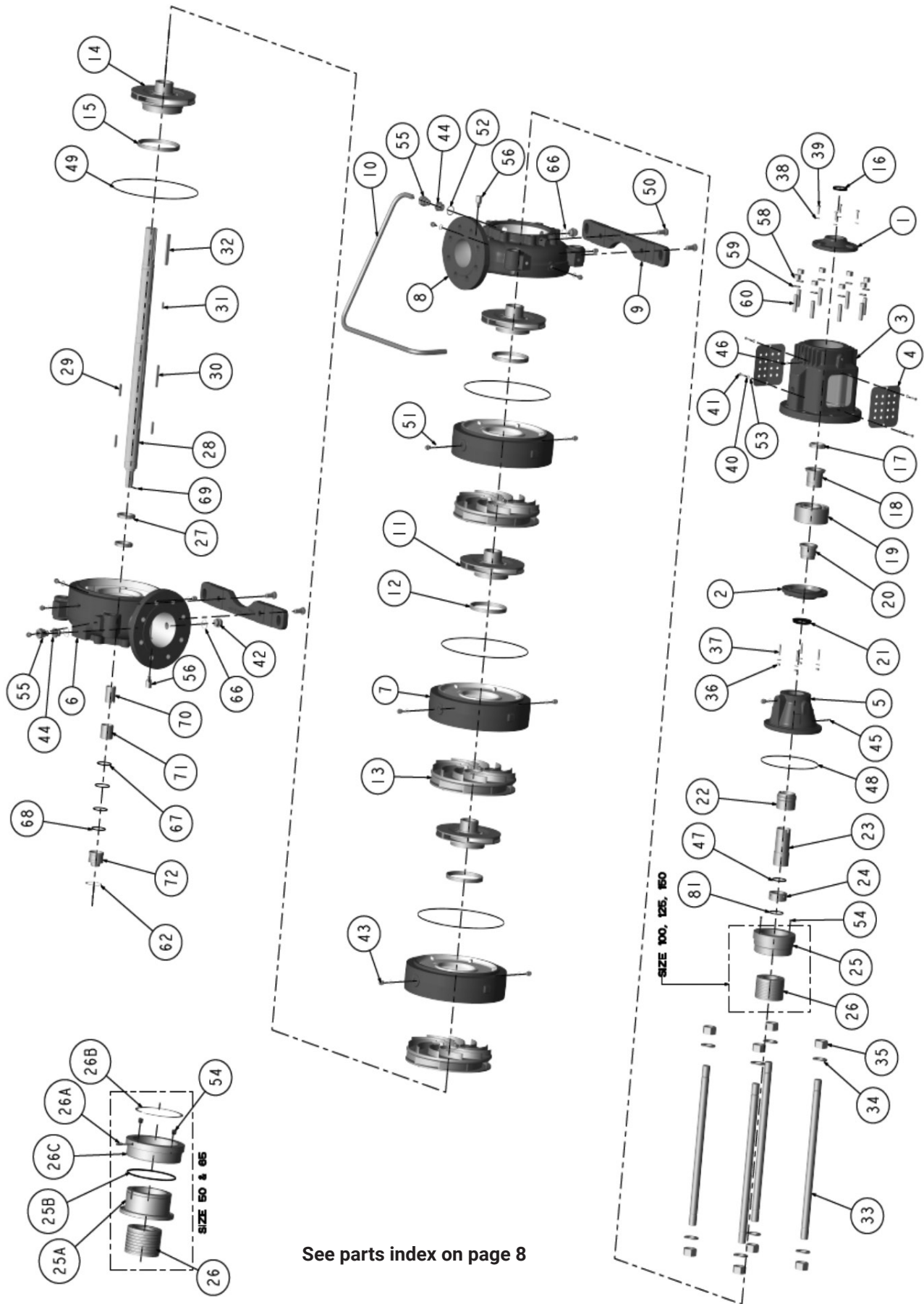
See parts index on page 8

e-MPD size 50, 65, 100, 125 and 150 – Exploded view

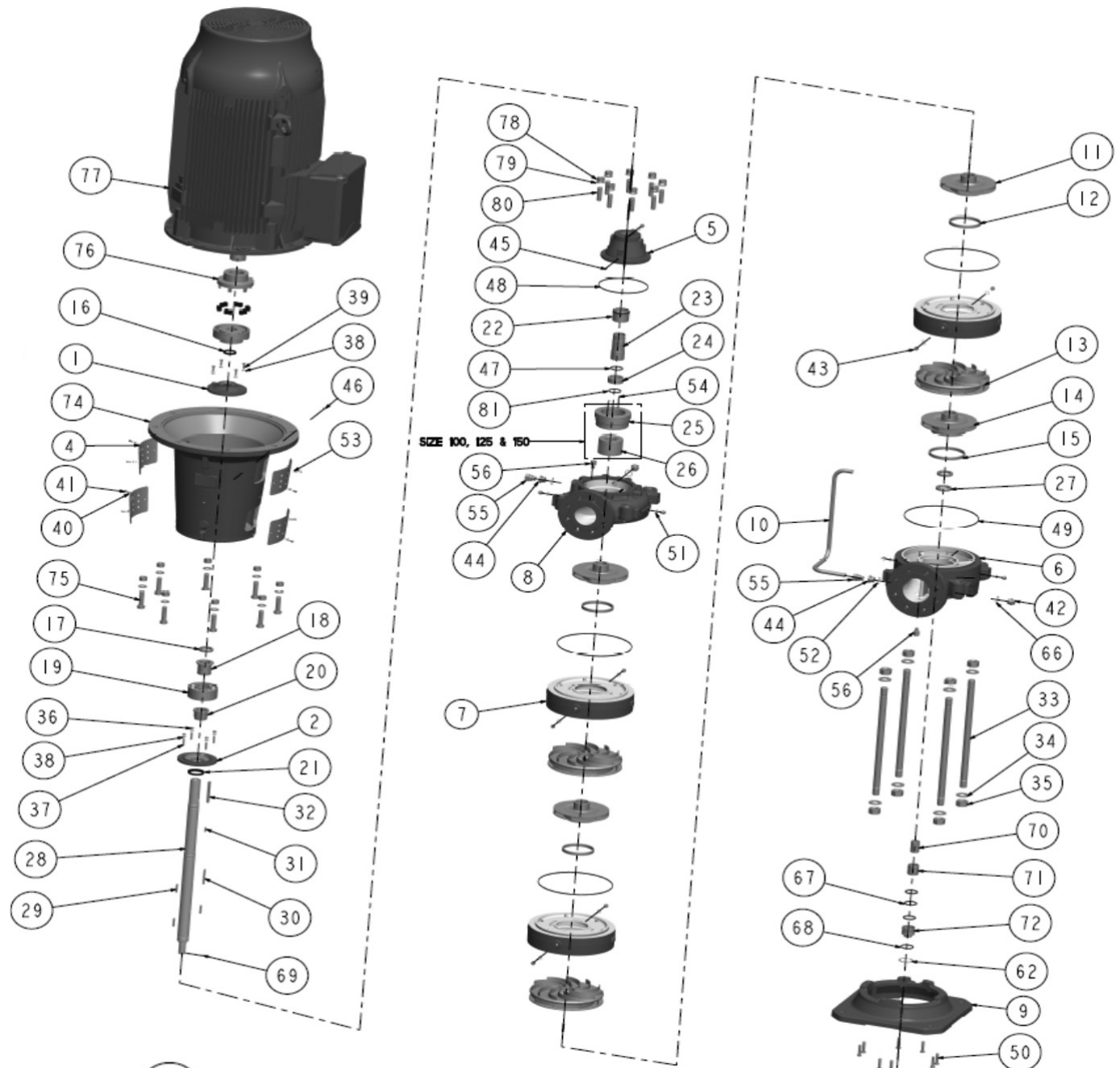


See parts index on page 8

e-MPR size 50, 65, 100, 125 and 150 – Exploded view



e-MPV size 50, 65, 100, 125 and 150 – Exploded view



Size 50 & 65

See parts index on page 8

## Exploded view index

Serial No.	Part	Qty
1	Bearing cover-motor	1
2	Bearing cover-pump	1
3	Bearing bracket	1
4	Shaft safety guard	2
5	Seal cover	1
6	Suction casing	1
7	Stage casing	(d)
8	Discharge casing	1
9	Pump foot	2
10	Balancing pipe	1
11	Impeller	(d)
12	Wear ring - stage casing	(b, d)
13	Diffuser	(d)
14	Impeller-suction	1
15	Wear ring-suction	1 (b)
16	V-ring - coupler side	1
17	Bearing nut,self-lock	1
18	Bearing sleeve	1
19	Ball bearing - discharge end	1
20	Spacer sleeve	1
21	V-ring - pump side	1
22	Mechanical seal	1
23	Shaft sleeve	1
24	Drum nut	1
25	Drum bushing	1
26	Drum	1 (c)
25A.	Drum bushing	1 (c)
25B.	O-ring, drum bushing	1 (c)
26A.	Set screw, drum	1 (c)
26B.	Retaining ring, drum	1 (c)
26C.	Drum body	1 (c)
27	Impeller nut	2
28	Shaft	1
29	Key, stage	(d)
30	Key, last stage	1
31	Key, shaft sleeve	1
32	Key, coupling	1
33	Tie bolt	4
34	Washer	8
35	Hexnut	8
36	Hexnut, bearing cover	4
37	Stud, bearing cover	4
38	Washer, bearing cover	8
39	Hexscrew, bearing cover	4
40	Washer, safety guard	(d)
41	Hexscrew, safety guard	(d)
42	Thread plug, drain	2
43	Thread plug, vent	(d)

Serial No.	Part	Qty
44	Balancing pipe fitting_1	2
45	Grooved pin, seal cover	1
46	Grease nipple	1
47	O-ring, shaft sleeve	1
48	O-ring, seal cover	1
49	O-ring, stage	(d)
50	Hexscrew, pump foot	4
51	Gasket, vent	(d)
52	Gasket, balancing pipe	2
53	Lockwasher, shaft safety guard	(d)
54	Grub screw	2 (e)
55	Balancing pipe fitting_2	2
56	Adapter, PM adapter	1
57	Grub screw, suction casing	1
58	Hexnut, bearing bracket	8
59	Washer, bearing bracket	8
60	Stud, bearing bracket	8
61	Spacer sleeve	1
62	Circlip, bearing suction	1
63	Ball bearing-suction end	1
64	Bearing cover plug	1
65	Throttle, suction casing	1
66	Gasket, drain	2
67	O-ring, slide bearing bush	3
68	O-ring,slide bearing cover	1
69	Set screw	1
70	Slide bearing sleeve	1
71	Slide bearing bush	1
72	Slide bearing cover	1
73	Cap suction	1
74	Motor adapter	1
75	Hexscrew,motor adapter	8
76	Flexible coupling	1
77	Motor	1
78	Hexscrew, adapter	16
79	Washer, adapter	16
80	Stud, adapter	8
81	O-ring, drum	1

### NOTES:

- a) For mechanical seal, cartridge seal is an alternative option.
- b) Wear rings are standard only with Stainless steel,duplex and super duplex. For ductile casings, wear rings are optional.
- c) For drum, pump size 50 and 65 drum components include drum, drum bushing, drum body, retaining ring, o-ring & set screw.
- d) Quantity depends on pump configuration.
- e) #54 only for ductile iron pumps.

## Basic service kit

Basic service kit			Number of stages									
Pump size	Configuration	O-Ring material	2-3 Stages		4-5 Stages		6-7 Stages		8-9 Stages		10-12 Stages	
			PN	List price	PN	List price	PN	List price	PN	List price	PN	List price
50	A,R,V	EPDM	P7000400	1706	P7000404	1728	P7000408	1750	P7000412	1773	P7000416	1806
		FKM	P7000401	1757	P7000405	1807	P7000409	1856	P7000413	1906	P7000417	1981
	D	EPDM	P7000402	2872	P7000406	2895	P7000410	2917	P7000414	2939	P7000418	2973
		FKM	P7000403	2939	P7000407	2989	P7000411	3038	P7000415	3088	P7000419	3163
65	A,R,V	EPDM	P7000420	1756	P7000424	1783	P7000428	1809	P7000432	1836	P7000436	1876
		FKM	P7000421	1810	P7000425	1871	P7000429	1931	P7000433	1992	P7000437	2083
	D	EPDM	P7000422	3271	P7000426	3298	P7000430	3324	P7000434	3351	P7000438	3345
		FKM	P7000423	3337	P7000427	3397	P7000431	3458	P7000435	3518	P7000439	3550
100	A,R,V	EPDM	P7000440	2210	P7000444	2545	P7000448	2595	P7000452	2646		
		FKM	P7000441	2257	P7000445	2677	P7000449	2762	P7000453	2847		
	D	EPDM	P7000442	3997	P7000446	4048	P7000450	4098	P7000454	4149		
		FKM	P7000443	4108	P7000447	4193	P7000451	4278	P7000455	4363		
125	A,R,V	EPDM	P7000456	3310	P7000460	3453	P7000464	3596				
		FKM	P7000457	3328	P7000461	3457	P7000465	3585				
	D	EPDM	P7000458	5444	P7000462	5587	P7000466	5729				
		FKM	P7000459	5457	P7000463	5586	P7000467	5714				
150	A,R,V	EPDM	P7000468	4710	P7000472	4805						
		FKM	P7000469	4976	P7000473	5146						
	D	EPDM	P7000470	8305	P7000474	8400						
		FKM	P7000471	8509	P7000475	8679						

## e-MP A/V/R

Description	Kit contents
<p>The Basic Service Kit contains all parts required to perform a seal change. This kit is strongly recommended to simplify routine maintenance</p>	<ul style="list-style-type: none"> <li>• Bearing discharge side</li> <li>• Bearing sleeve</li> <li>• Self-lock nut</li> <li>• V-Rings</li> <li>• Spacer sleeve discharge side</li> <li>• Shaft sleeve</li> <li>• Key shaft sleeve</li> <li>• Slide bearing bushing</li> <li>• Slide bearing sleeve</li> <li>• Slide bearing set screw</li> <li>• Casing O-Ring</li> <li>• Seal cover O-Ring</li> <li>• Drum O-Ring</li> <li>• Floating drum O-Ring</li> <li>• Shaft sleeve O-Ring</li> <li>• Slide bearing bush O-Ring</li> <li>• Slide bearing cover O-Ring</li> <li>• Gaskets</li> </ul>

## e-MPD

Description	Kit contents
<p>The Basic Service Kit contains all parts required to perform a seal change. This kit is strongly recommended to simplify routine maintenance</p>	<ul style="list-style-type: none"> <li>• Bearing discharge side</li> <li>• Bearing suction side</li> <li>• Bearing sleeve</li> <li>• Self-lock nut</li> <li>• V-Rings</li> <li>• Spacer sleeve discharge side</li> <li>• Spacer sleeve suction side</li> <li>• Shaft sleeve</li> <li>• Key shaft sleeve</li> <li>• Casing O-Ring</li> <li>• Seal cover O-Ring</li> <li>• Drum O-Ring</li> <li>• Floating drum O-Ring</li> <li>• Shaft sleeve O-Ring</li> <li>• Gaskets</li> </ul>

Quantity of components depend on the number of stages in the pump. For further breakdown of kit content please contact factory

## Mechanical seal

Item no.			e-MP50A/e-MP50B	
			Balanced - standard	Balanced - duplex
			Pump DNC, NNN/RNN	Pump RRR
	Diameter 38		H75N	H75N
22	4 = Carbon/SiC/EPDM	<120°C	772240652	772240656
	2 = Carbon/SiC/FPM		772240653	772240657
	Z = SiC/SiC/EPDM		772240654	772240658
	W = SiC/SiC/FPM		772240655	772240659
	High Temp.	<140°C	772240521	—

**Mechanical seal**

Item no.			e-MP65A/e-MP65B	
			Balanced - standard	Balanced - duplex
			Pump DNC, NNN/RNN	Pump RRR
			Diameter 43	H75N
22	4 = Carbon/SiC/EPDM	<120°C	772240530	772240543
	2 = Carbon/SiC/FPM		772240660	772240589
	Z = SiC/SiC/EPDM		772240535	772240661
	W = SiC/SiC/FPM		772240537	772240662
	High Temp.	<140°C	772240531	—

**Mechanical seal**

Item no.			e-MP100A/e-MP100B	
			Balanced - standard	Balanced - duplex
			Pump DNC, NNN/RNN	Pump RRR
			Diameter 55	H75N
22	4 = Carbon/SiC/EPDM	<120°C	772240651	772240667
	2 = Carbon/SiC/FPM		772240663	772240668
	Z = SiC/SiC/EPDM		772240664	772240669
	W = SiC/SiC/FPM		772240665	772240670
	High Temp.	<140°C	772240666	—

**Mechanical seal**

ITEM NO.			e-MP125A/e-MP125B	
			Balanced - standard	Balanced - duplex
			Pump DNC, NNN/RNN	Pump RRR
			Diameter 65	H75N
22	4 = Carbon/SiC/EPDM	<120°C	772240649	772240675
	2 = Carbon/SiC/FPM		772240671	772240637
	Z = SiC/SiC/EPDM		772240672	772240676
	W = SiC/SiC/FPM		772240673	772240677
	High Temp.	<140°C	772240674	—

**Mechanical seal**

Item no.			e-MP150A/e-MP150B	
			Balanced - standard	Balanced - duplex
			Pump DNC, NNN/RNN	Pump RRR
			Diameter 75	H75N
22	4 = Carbon/SiC/EPDM	<120°C	772240641	772240645
	2 = Carbon/SiC/FPM		772240642	772240679
	Z = SiC/SiC/EPDM		772240643	772240646
	W = SiC/SiC/FPM		772240644	772240680
	High Temp.	<140°C	772240678	—

Material code information can be found in the nomenclature for casing, impeller and diffuser on page 3.

C = Cast Iron, D = Ductile Iron, N = Stainless steel, R = Duplex, T = Super Duplex

## Vertical coupling

Pump size	HP		Pump hub	Element	Motor hub						
	3600 RPM	1800 RPM			182TD/184TD	213TD/215TD	254TD/256TD	284TSD/286TSD	284TD/286TD	324TSD/326TSD	324TD/326TD
50	30	15	P7000020	P2000264			P2000309	P2000309			
	50	25	P7000022	P2000267					P2000317	P2000317	
	75	40	P7000024	P2000270					P2000325		P2000326
	100	50	P7000027	P7000056					P7000045	P7000044	P7000044
	125	60	P7000030	P2000273						P2000334	P2000334
	200	100	P7000033	P2000276						P2000343	P2000343
	300	150									
	400	200									
65	30	15	P7000021	P2000264			P2000309	P2000309			
	50	25	P7000023	P2000267					P2000317	P2000317	
	75	40	P7000025	P2000270					P2000325		P2000326
	100	50	P7000028	P7000056					P7000045	P7000044	P7000044
	125	60	P7000031	P2000273						P2000334	P2000334
	200	100	P7000034	P2000276						P2000343	P2000343
	300	150									
	400	200									
100	30	15									
	50	25									
	75	40	P7000026	P2000270					P2000325		P2000326
	100	50	P7000029	P7000056					P7000045	P7000044	P7000044
	125	60	P7000032	P2000273						P2000334	P2000334
	200	100	P7000035	P2000276						P2000343	P2000343
	300	150	P7000037	P2000279							
	400	200	P7000038	P2000282							
125	30	15									
	50	25									
	75	40	P7000101	P2000270					P2000325		P2000326
	100	50									
	125	60									
	200	100	P7000036	P2000276						P2000343	P2000343
	300	150									
	400	200	P7000039	P2000282							
150	30	15									
	50	25									
	75	40									
	100	50									
	125	60									
	200	100									
	300	150									
	400	200									
700	350										

## Vertical coupling

Pump size	HP		Motor hub							
	3600 RPM	1800 RPM	364TSD/365TSD	364TD/365TD	404TSD/405TSD	404TD/405TD	444TSD/445TSD	444TD/445TD	447TSD/449TSD	447TD/449TD
50	30	15								
	50	25	P2000317							
	75	40	P2000325							
	100	50	P7000045		P7000044					
	125	60		P2000335	P2000334		P2000335			
	200	100		P2000344	P2000343		P2000344		P2000335	
	300	150								
	400	200								
	700	350								
65	30	15								
	50	25	P2000317							
	75	40	P2000325							
	100	50	P7000045		P7000044					
	125	60		P2000335	P2000334		P2000335			
	200	100		P2000344	P2000343		P2000344		P2000335	
	300	150								
	400	200								
	700	350								
100	30	15								
	50	25								
	75	40	P2000325							
	100	50	P7000045		P7000044					
	125	60		P2000335	P2000334		P2000335			
	200	100		P2000344	P2000343		P2000344		P2000335	
	300	150		P2000355			P2000355		P2000355	
	400	200		P2000366			P2000366		P2000366	
	700	350								
125	30	15								
	50	25								
	75	40	P2000325							
	100	50								
	125	60								
	200	100		P2000344	P2000343		P2000344		P2000335	
	300	150								
	400	200		P2000366			P2000366		P2000366	
	700	350		P2000378			P2000378		P2000378	
150	30	15								
	50	25								
	75	40								
	100	50								
	125	60								
	200	100								
	300	150								
	400	200								
	700	350								

## Horizontal coupling

Pump size	HP		Pump hub	Motor hub						
	3600 RPM	1800 RPM		182TD/184TD	213TD/215TD	254TD/256TD	284TSD/286TSD	284TD/286TD	324TSD/326TSD	324TD/326TD
50	50	25	P7000062	P7000090	P7000079	P7000081	P7000081			
	75	40								
	100	50	P7000065			P7000080	P7000080	P7000078	P7000078	P7000084
	150	75	P7000068							P7000085
	250	125	P7000071							
	400	200								
	600	300								
	1000	600								
65	50	25	P7000063	P7000090	P7000079	P7000081	P7000081			
	75	40								
	100	50	P7000066			P7000080	P7000080	P7000078	P7000078	P7000084
	150	75	P7000069							P7000085
	250	125	P7000072							
	400	200	P7000074							
	600	300								
	1000	600								
100	50	25								
	75	40	P7000064		P7000082	P7000083	P7000083			
	100	50	P7000067			P7000080	P7000080	P7000078	P7000078	P7000084
	150	75	P7000070							P7000085
	250	125	P7000073							
	400	200	P7000075							
	600	300	P7000076							
	1000	600								
125	50	25								
	75	40								
	100	50								
	150	75								
	250	125								
	400	200								
	600	300								
	1000	600								
150	50	25								
	75	40								
	100	50								
	150	75								
	250	125								
	400	200								
	600	300								
	1000	600								

## Horizontal coupling

Pump size	HP		Motor hub							
	3600 RPM	1800 RPM	364TSD/365TSD	364TD/365TD	404TSD/405TSD	404TD/405TD	444TSD/445TSD	444TD/445TD	447TSD/449TSD	447TD/449TD
50	50	25								
	75	40								
	100	50			P7000084					
	150	75			P7000085					
	250	125		P7000086			P7000086		P7000086	
	400	200								
	600	300								
	1000	600								
65	50	25								
	75	40								
	100	50								
	150	75			P7000085					
	250	125		P7000086			P7000086		P7000086	
	400	200								
	600	300								
	1000	600								
100	50	25								
	75	40								
	100	50								
	150	75			P7000085					
	250	125		P7000086			P7000086		P7000086	
	400	200		P7000087		P7000088	P7000087		P7000087	
	600	300		P7000089			P7000089		P7000089	
	1000	600								
125	50	25								
	75	40								
	100	50								
	150	75								
	250	125								
	400	200								
	600	300								
	1000	600								
150	50	25								
	75	40								
	100	50								
	150	75								
	250	125								
	400	200								
	600	300								
	1000	600								

## Notes

## Notes



Learn more about  
e-MP Series

---

Xylem Inc.  
[www.xylem.com](http://www.xylem.com)

Subject to change without notice. All information presented herein is believed reliable and in accordance with accepted engineering practices. Xylem makes no warranties as to the completeness of this information. Users are responsible for evaluating individual product suitability for specific applications. Xylem assumes no liability whatsoever for any special, indirect or consequential damages arising from the sale, resale or misuse of its products.

© 2025 Xylem is a registered trademark of Xylem Inc. or one of its subsidiaries. All other trademarks or registered trademarks are the property of their respective owners.

eMP-PL R6 6/2025

